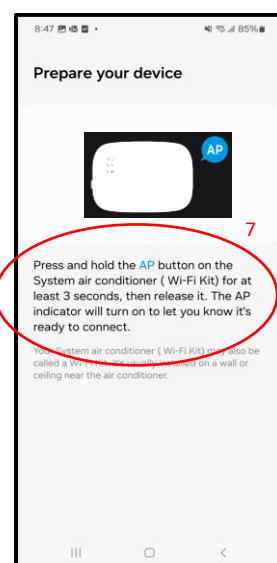
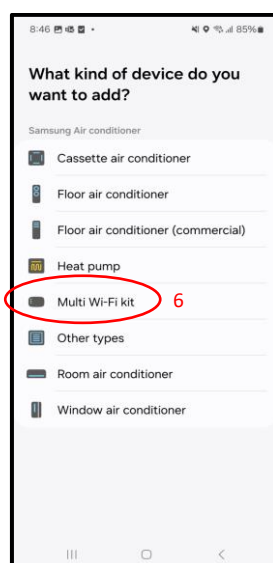
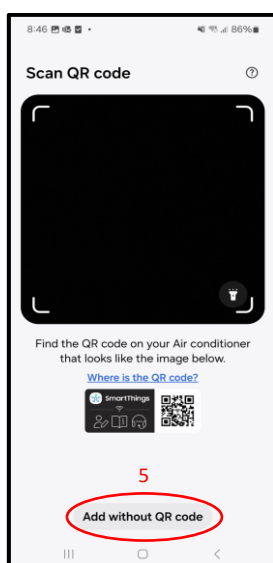
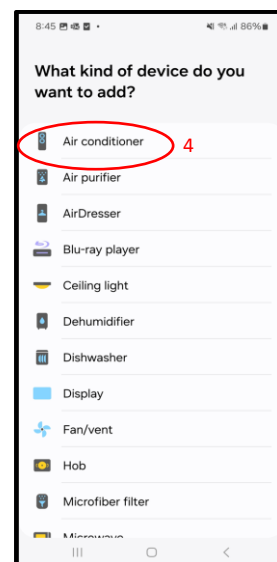
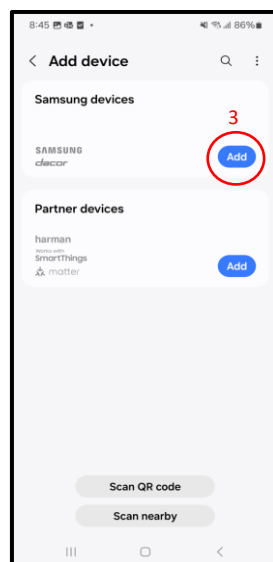
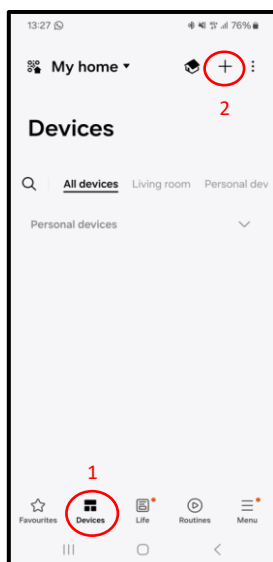


SAMSUNG Climate Solutions

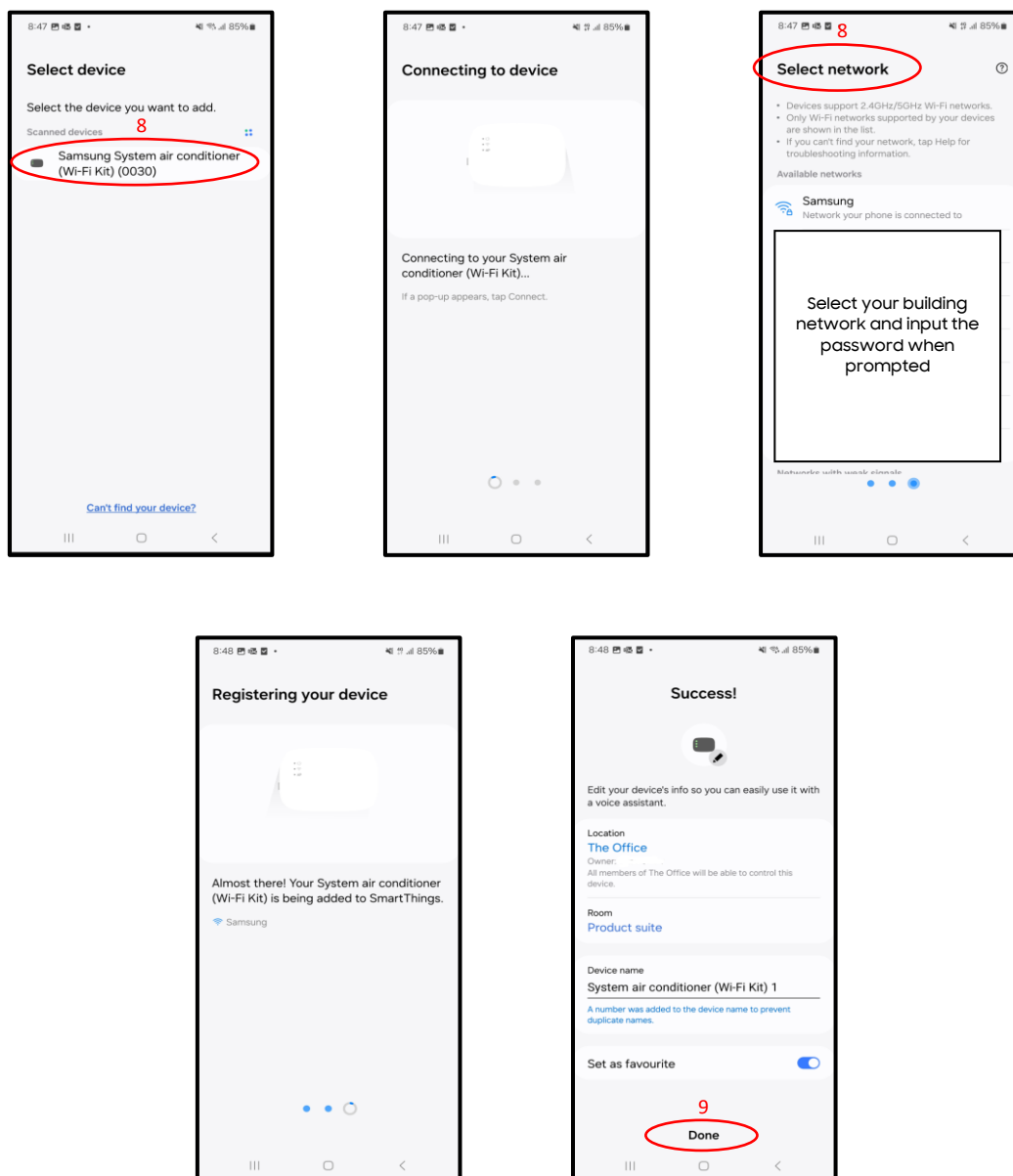
Wi-Fi kit (MIM-H04EN) connection Android

To connect a Wi-Fi kit to your SmartThings account, please follow the steps below.

- Download the SmartThings app and create an account.
- Set the mobile device to aeroplane mode and turn on Wi-Fi
- Follow the steps below.



SAMSUNG Climate Solutions



Once connected you will be able to assign any of the units connected to it into specific areas you have created.