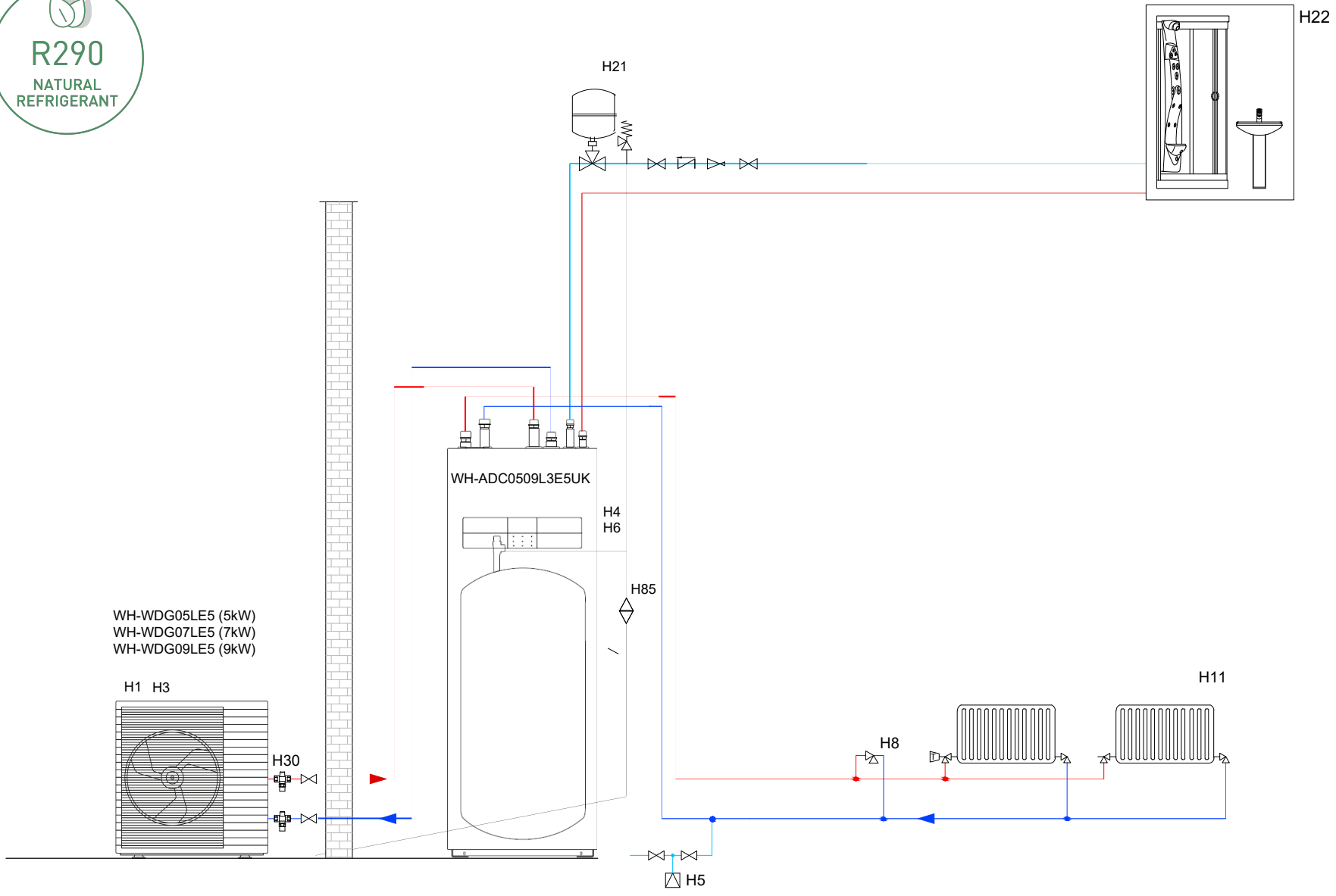


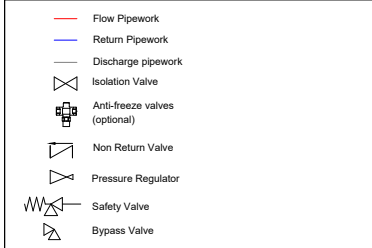


**R290**  
NATURAL  
REFRIGERANT



General Notes:

- Scan QR Code for a link to the Aquarea Installation Guide
- Please ensure that you have attended training and have read the installation and operation manuals regarding this product
- Panasonic accept no responsibility for the design or errors, schematic is for indication purposes only
- Pending of water test, correct inhibitor levels and biocide should be used
- Freeze protection must be considered using either glycol or anti-freeze valve's
- By-pass required if flow rate is not sufficient when rad valves are closed
- Please ensure PRV/ PTRV discharge discharge pipework is compliant with local laws
- Maximum distance between indoor and outdoor unit is 30m



Legend:

- H1 Heat Pump Outdoor unit
- H3 Refrigerant inside the Heat Pump is R290
- H4 Magnetic Particle Filter is inside indoor unit
- H5 Mains (city) water connection
- H6 10L Expansion Vessel (heating) is inside Indoor unit, additional vessel maybe required to meet system requirements
- H8 Auto Bypass - minimum 1" full bore recommended
- H11 Heat Distribution system
- H21 Expansion Vessel (Cold Water)
- H22 Domestic Hot Water Circuit
- H30 Anti-freeze valves (PAW-A2W-AFVLV)-optional, 2 required per heat pump H85 Discharge pipework (Must be compliant with local laws)

Aquarea Single Fan L generation AIO		
Model	Flow Rate	Min. Pipe Size Ø*
5kW	14.3 l/min	22 mm
7kW	20.7 l/min	22 mm
9kW	25.8 l/min	28 mm

\* calculated at dt5.  
Pipework sizes stated for copper

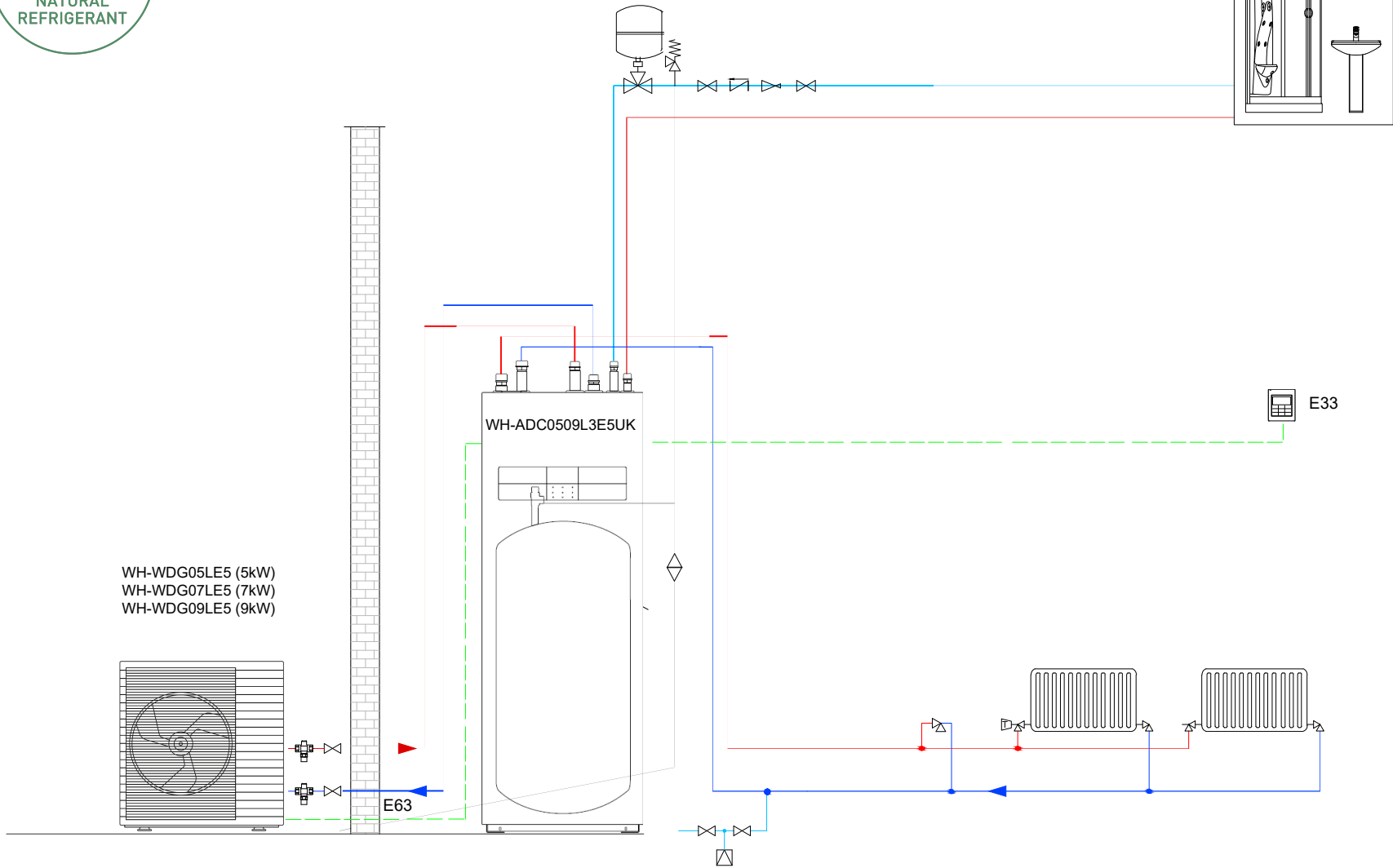


Description:  
Typical schematic drawing for piping layout of L Generation AIO

Piping Layout Schematic:  
Direct, single zone, Panasonic controls

Drawing Number: L-AIO-D-1P | Issue: 1.0

\*Panasonic is not responsible, directly, or indirectly, towards users and in general towards any third party for any delays, inaccuracies, errors, omissions, damages (direct, indirect, consequential, and punishable) arising from such contents. Texts, photos, graphics, may not be published, rewritten, marketed, and distributed by users and third parties in general, in any way and in any form if not expressly indicated in written form by Panasonic itself.



**Notes:**

- Note E26:** Main Board PCB
- The maximum cable length for sensor inputs is 30 meters and the maximum cable length for outputs and other inputs is 50m
- Note E33:** Panasonic Remote Controller
- The Panasonic heat pump controller can be used as a **room thermostat for one circuit only. The maximum cable length is 50 meters**

WH-WDG05LE5 (5kW)  
WH-WDG07LE5 (7kW)  
WH-WDG09LE5 (9kW)

WH-ADC0509L3E5UK

E33

E63

**Legend:**

E33 Panasonic remote controller

E63 Connection to the outdoor unit: The outdoor unit power supply comes/communication from the indoor unit, so it is not necessary to bring a direct power supply to the outdoor unit

Aquarea L generation AIO WH-ADC0509L3E5UK			
Model	Power Supply Cord	Isolating Devices	Recommended RCD
WH-WDG05LE5	1	25A	30mA, 2P, type A
WH-WDG07LE5	2	15/16A	30mA, 2P, type AC
WH-WDG09LE5			

\* Refer to installation manual for IEC/EN61000-XX compliance requirements



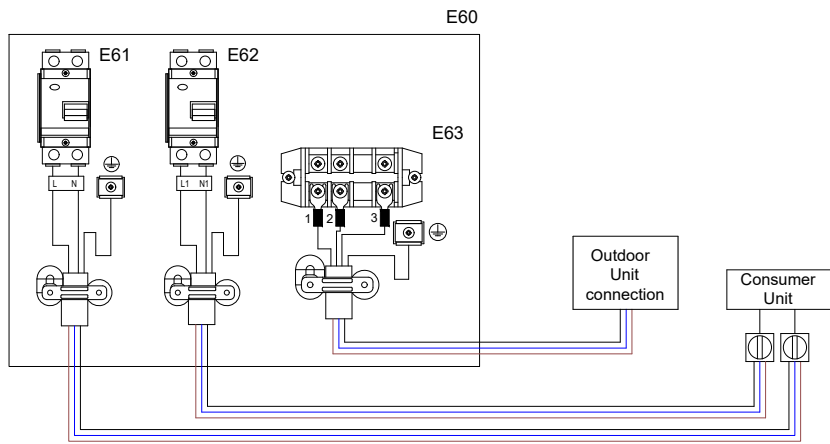
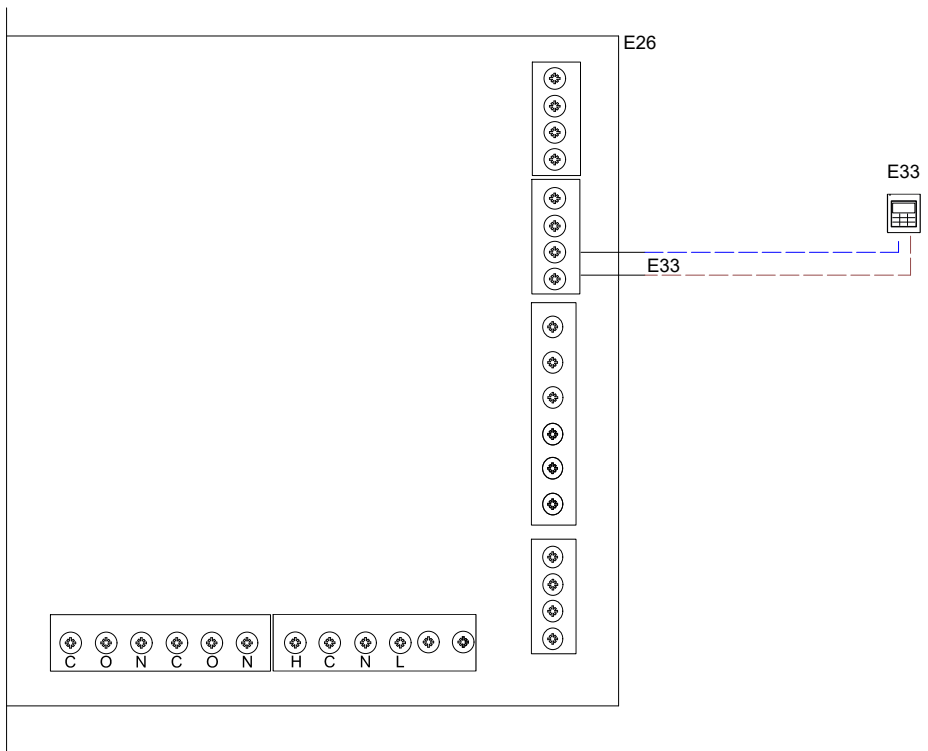
Description:  
Typical schematic drawing for electrical layout of L Generation AIO

Piping Layout Schematic:  
Direct, single zone, Panasonic controls

Drawing Number:  
L-AIO-D-1P

Issue:  
1.0

\*Panasonic is not responsible, directly, or indirectly, towards users and in general towards any third party for any delays, inaccuracies, errors, omissions, damages (direct, indirect, consequential, and punishable) arising from such contents. Texts, photos, graphics, may not be published, rewritten, marketed, and distributed by users and third parties in general, in any way and in any form if not expressly indicated in written form by Panasonic itself.



Notes:

- Note E26:** Main Board PCB
- The maximum cable length for sensor inputs is 30 meters and the maximum cable length for outputs and other inputs is 50m

- Legend:**
- E26 Main board PCB - see notes E26
  - E33 Panasonic remote controller
  - E60 Indoor Unit Power Supply
  - E61 Unit Power Supply 1 - Main compressor unit power supply
  - E62 Unit Power Supply 2 - Electric Back-Up Heater
  - E63 Connection to the outdoor unit: The outdoor unit power supply/ communication comes from the indoor unit, so it is not necessary to bring a direct power supply to the outdoor unit

Aquarea L generation AIO WH-ADC0509L3E5UK			
Model	Power Supply Cord	Isolating Devices	Recommended RCD
WH-WDG05LE5	1	25A	30mA, 2P, type A
WH-WDG07LE5 WH-WDG09LE5	2	15/16A	30mA, 2P, type AC

\* Refer to installation manual for IEC/EN61000-XX compliance requirements



Description:  
PCB Connections - AIO heat pump system

Piping Layout Schematic:  
Direct, single zone, Panasonic controls

\*Panasonic is not responsible, directly, or indirectly, towards users and in general towards any third party for any delays, inaccuracies, errors, omissions, damages (direct, indirect, consequential, and punishable) arising from such contents. Texts, photos, graphics, may not be published, rewritten, marketed, and distributed by users and third parties in general, in any way and in any form if not expressly indicated in written form by Panasonic itself.