

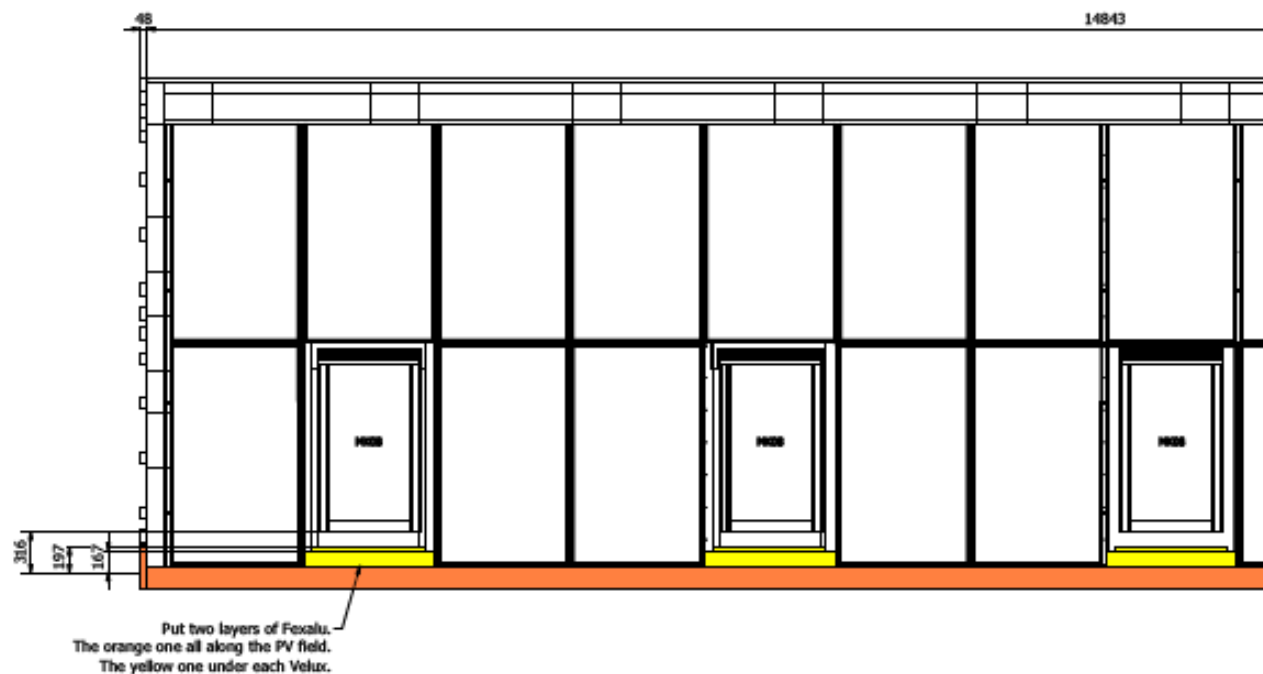
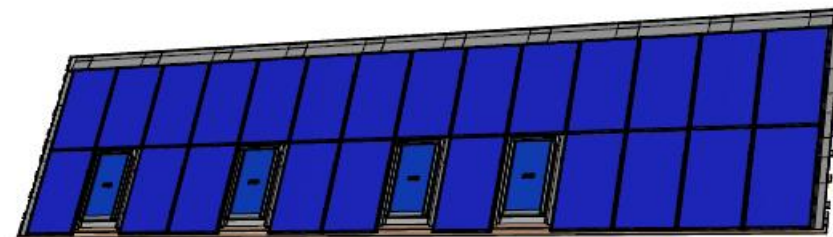
VELUX/GSE ODL Flashing kit

Installation of MK08 with new frames H1710

23/07/20

ODL flashing – Installation with H1710 frame

- Configuration with VELUX on the first line
 - Set the VELUX higher to get a sufficient overlapping (100 mm) between the top flashing and the upper frame
 - Add a waterproofing strip at the bottom to compensate the difference



ODL flashing – Installation with H1710 frame

➤ Configuration with VELUX in the middle of the array

- 17mm spacing + 100mm of overlapping
- Add a metallic part or a waterproofing strip

NB: The option to set a waterproofing strip at the bottom is also possible but it should look more aesthetic to make it on top when the VELUX is in the middle.

