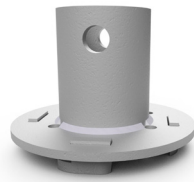


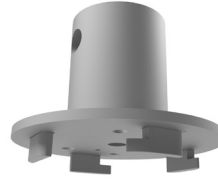
# Datasheet **Screw pile adapter**

- Field system foundation**
- The field systems of Van der Valk Solar Systems are suitable for every type of substrate. A commonly chosen foundation uses screw piles. Maximum stability is always paramount.
- Installation of screw piles**
- Screw piles should be drilled into the ground in a straight line. This can be done by using a mini-excavator, a drill motor, split pin and the screw pile adapter we developed.
  - For large installations it is often recommended to work with a contractor, that has specialised equipment for drilling the screw piles into the ground.
- Screw pile adapter**
- The screw pile adapter connects the drill motor and the screw pile.
  - The adapters are suited for a drill motor with an axis of 65mm cross-section in combination with a split pin.

**Illustration/  
article number**



Art. 747316  
Screw pile adapter - Type A flange



Screw pile

**Instructions**

- Attach the drill motor to a mini-excavator.
- Fix the top of the adapter to the drill motor and secure it with a split pin with a diameter of 25.4mm.
- Fix the bottom of the screw pile adapter to the flange of the screw pile.
- Now you can drill the screw pile into the ground.
- Make sure that the piles go straight into the ground and that all piles are exactly level.
- Remove the adapter from the screw pile.

**Advice**

- We cannot advise you about the power of the drill motor or mini-excavator because it depends on the substrate into which you are drilling the piles.

**Examples**

- Images below show some examples of drill motors and a mini-excavator. This type of equipment (including split pin) is not supplied by Van der Valk Solar Systems and is to be arranged by the installer.

