

# QUANTUM:EV

EV CHARGE.ONLINE

Type 2, Mode 3 Charging Socket(s)

GPRS Communication

3.6kW Or 7.2kW

# ROLEC

EV

MANUFACTURED IN THE UK



Unit shown: QUANTUM:EV  
EV CHARGE.ONLINE  
2way Socket (Type 2) Charging Pedestal

The QUANTUM:EV Charge.Online pedestal offers a blend of quality and value, and has been specifically designed to provide both style and flair. Its unique LED louvered amenity lighting safely guides EV drivers to their charging point during the hours of darkness. The unit's custom branding options also provide the perfect blank canvas for company logos, colours, etc.

This versatile, future-proof pedestal offers a simple pay-to-charge solution via the EV driver's mobile phone. Ideal locations include offices, factories, private car parks, schools, depots and many more.

These pedestals are available in both 1way & 2way versions. Each unit provides Mode 3 fast charging in either 3.6kW or 7.2kW speeds and features a GPRS antenna communication connection.

## PRODUCT FEATURES

- IEC 61851-1 Mode 3 fast charging
- 1way and 2way 3.6kW (16A) & 7.2kW (32A) charging options
- IEC 62196 (Type 2) charging socket(s) c/w security hatchlock(s)
- Photocell controlled LED amenity lighting head
- Surface or roof mountable
- Built-in overload and fault current protection (RCBO)
- Built-in LED charging status indicator
- Built-in class 1 MID compliant kWh meter
- Full operating instruction fascia
- EV driver Pay-to-Charge facility using their mobile phone
- OLEV Grant Fundable under the Workplace Charging Scheme
- Easy to install and maintain
- IP66 British Standard Institute (BSI) certified
- Corrosion resistant, UV stabilised & fire retardant
- Impact resistant design. CE certified

Connected by Vodafone

EV CHARGE.ONLINE  
**PAY-TO-CHARGE**  
PAYMENT PARTNERS/ASSOCIATES

worldpay

VISA    Mastercard    American Express



GPRS  
Connectivity



Grant  
Fundable



EV Driver  
Multi Device Access



Branding & Colour  
Options Available



LED Amenity  
Lighting

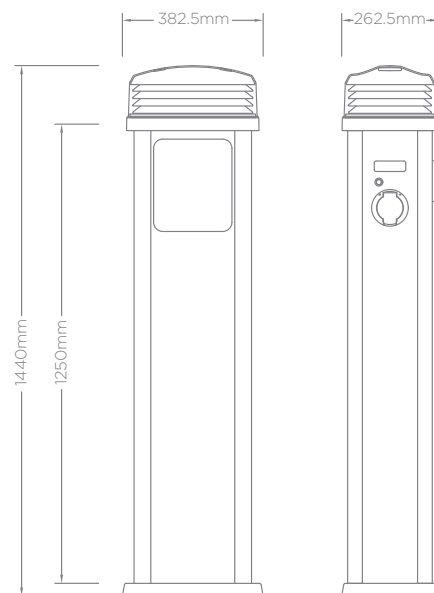


IP66 Weather Proof  
& UV Stabilised

# SPECIFICATIONS

## PHYSICAL

Dimensions	382.5mm x 1440mm x 262.5mm (W x H x D)
Standard Body Colour	Black (Other colours available upon request)
Substructure Material	2.5mm thick, high quality 6063 extruded aluminium with a 25 micron hard anodised protective cosmetic finish
Lens Material	High impact resistant 3mm polycarbonate
Base Material	High impact resistant, heavy-duty 5mm polycarbonate
Lid/Sandwich Material	High impact resistant polycarbonate
Operating Temperature	-30°C to +50°C
Certifications & Compliances	Wiring Regulations - BS 7671 (18th Edition) IET EV Regulations, Glow Wire Testing - IEC 60695-2-13 EMC Compliance - EN 61000-6-3:2007, EN 61000-6-2:2005 Safety Compliance - EN 60950-1:2006, EN 60950-22:2006, Low Voltage Directive (LVD) 2014/35/EU Environmental Protection - IP66 (Category 1) Weatherproof BS EN 60529, UL94 Flame Rating at V2 for 1.5mm and 3.0mm



## ELECTRICAL

Product Code	EVCO0410	EVCO0411	EVCO0420	EVCO0421
Charging Socket(s)	1x IEC 62196 (Type 2)		2x IEC 62196 (Type 2)	
Rated Output	3.6kW	7.2kW	3.6kW	7.2kW
Rated Current	16A	32A	16A	32A
Charge Protocol	Mode 3			
EV Charging Compliance	EN 61851-1:2001, EN 61851-21:2002, EN 61851-22:2002			
Input Voltage	230V AC/50Hz (Single Phase)			
Overload & Fault Current Protection	Built-in 30mA Type A RCBO & 6mA DC Sensitive Device			
Incoming Cable Terminals	1x 20A	1x 40A	2x 20A	2x 40A
Wireless Communications	GPRS Cellular Data Network Radio Equipment Directive			

## EV CHARGE.ONLINE

- Built-in modem and high gain GPRS signal antenna
- GPRS communication and Back Office connectivity
- Built-in roaming Sim card connects directly to the strongest signal
- UltraSmart Back Office management

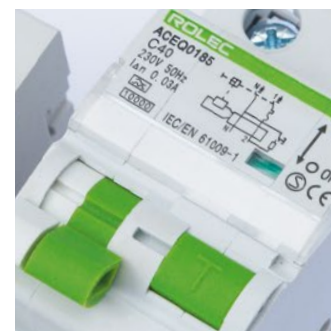
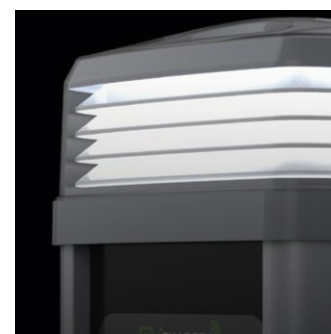
Connected by Vodafone

EV CHARGE.ONLINE PARTNERS/ASSOCIATES

## OPTIONS & ACCESSORIES

- Load Manager system (electrical distribution management)
- Corporate branding (colours, logo badge, etc.)
- Galvanised steel ground mounting base
- Protection barriers & charge point signage
- EV charging cables (Type 1 to Type 2 or Type 2 to Type 2)

Images are for marketing purposes only and are not contractual © 2018



Head office contact:  
t: +44 (0) 1205 724754  
f: +44 (0) 1205 724876  
rolec@rolecserv.co.uk

Rolec Services Ltd  
Ralphs Lane, Frampton West  
Boston, Lincolnshire  
UK. PE20 1QU

EVQRCOGD-02  
@RolecEV  
www.rolecserv.com