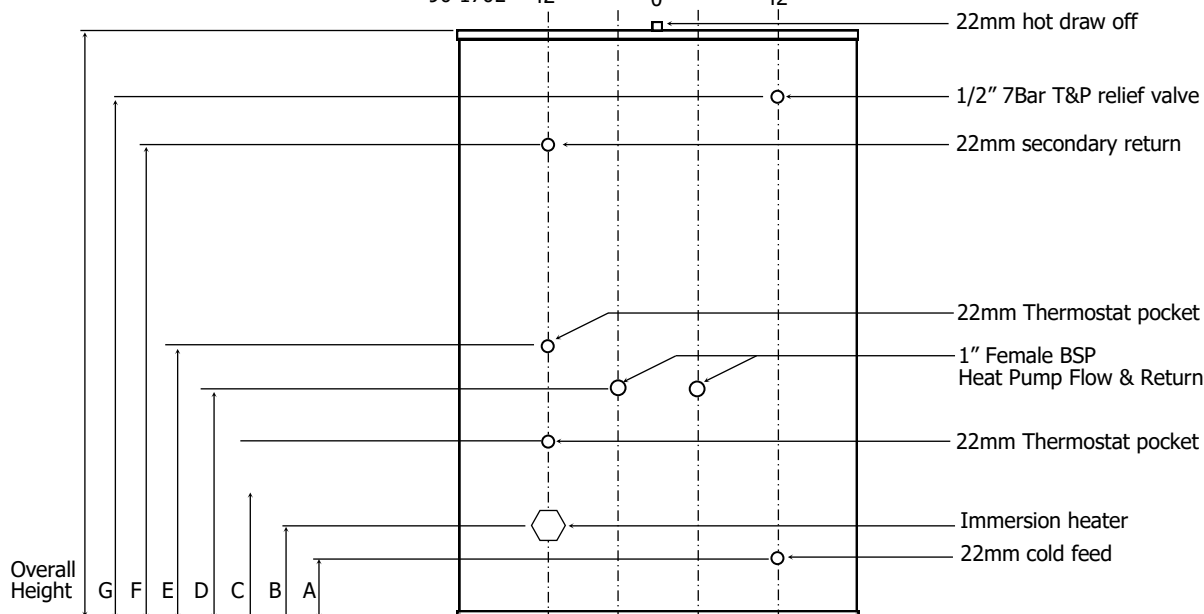


# Technical Data Sheet

## Tempest Heat Pump

400-500L	32°	0°	32°
200-300L	38°	0°	38°
90-170L	42°	0°	42°



400&500L supplied with 1" F cons & unv kit as standard.

All unvented cylinders come with an unvented component kit to suit.

Product Code	TSMI150/HP	TSMI170/HP	TSMI200/HP	TSMI250/HP	TSMI300/HP	TSMI400/HP	TSMI500/HP
Nominal Capacity (L)	90	125	150	170	200	250	300
Height (mm)	1060	1200	1500	1800	1780	1590	1835
Diameter (mm)	510	510	554	554	580	710	710
A (mm)	170	170	170	170	193	233	233
B (mm)	200	200	200	200	225	270	270
C (mm)	525	450	576	576	598	645	696
D (mm)	650	650	901	901	923	740	831
E (mm)	720	720	971	971	993	810	901
F (mm)	850	934	1223	1485	1312	1240	1381
G (mm)	890	1020	1323	1635	1461	1340	1581
Empty Weight (kg)	30	34	36	40	44	53	59
Full Weight (kg)	146	165	194	246	294	391	485
Standing Heat Loss (kWh/24h)	1.85	1.94	1.85	2.00	2.22	2.42	2.49
Actual capacity (L)	93	125	154	174	199	252	303
Standing loss (W)	77	81	77	83	92	101	104
Energy efficiency class of model	C	C	C	C	C	C	C
Temperature of thermostat (°C)	60	60	60	60	60	60	60
Coil surface area (m <sup>2</sup> )	2	2	3	3	3	3	3
Immersion Heater (Qty x Kw rating)	1 x 3	1 x 3	1 x 3	1 x 3	1 x 3	1 x 3	1 x 3
Operating pressure (bar)	3	3	3	3	3	3	3
Max incoming supply pressure (bar)	12	12	12	12	12	12	12



T: 01952 257961  
F: 01952 253452

E: sales@telford-group.com  
W: www.telford-group.com