



### Introduction

In a closed heating system, water cannot be compressed and any increase in water volume due to the increase of its temperature is absorbed by the expansion vessel. When water is cold, the precharge air pressure in the vessel presses the diaphragm against the tank. As temperature increases, the expanded water volume pushes against the diaphragm and water enters the vessel providing additional space to the system. When the water temperature decreases, the air cushion forces water back into the system. This permits the system to maintain pressure and ultimately helps to reduce energy consumption.

### expansion vessels for heating systems

- Suitable for all types of heating system
- Carbon steel construction
- SBR synthetic rubber diaphragm
- Hard wearing epoxy polyester powder coated finish
- 100% factory tested
- Fully CPR compliant
- Sizing calculator available\*
- Maximum working temperature 90°C



\*sizing calculator



### HEATING EXPANSION VESSELS



#### Technical Specification

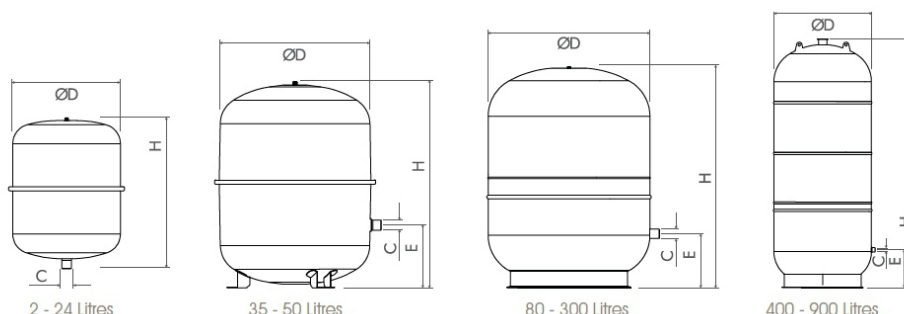
#### Wall mounted Cal-Pro expansion vessels 4 - 24 litres with wall mounting bracket

code	key code	capacity	Ø D	H	E	C	max. working pressure	pre-charge
Z1-301004	CAL4	4 litres	225	195	-	¾"	5 bar	1.5 bar
Z1-301008	CAL8	8 litres	220	295	-	¾"	5 bar	1.5 bar
Z1-301012	CAL12	12 litres	294	281	-	¾"	4 bar	2 bar
Z1-301018	CAL18	18 litres	290	375	-	¾"	4 bar	2 bar
Z1-301024	CAL24	24 litres	324	415	-	¾"	4 bar	2 bar
RSMB	HVMB	Wall mounting bracket for 4 - 24l heating vessels						

Supplied with wall mounting bracket

#### Floor mounted Cal-Pro expansion vessels 35 - 900 litres

code	key code	capacity	Ø D	H	E	C	max. working pressure	pre-charge
Z1-302035CP	CAL35	35 litres	404	387	119	¾"	4 bar	2 bar
Z1-302050CP	CAL50	50 litres	407	507	157	¾"	4 bar	2 bar
Z1-302080	CAL80	80 litres	450	608	150	¾"	6 bar	2.5 bar
Z1-302105	CAL105	105 litres	500	665	165	¾"	6 bar	2.5 bar
Z1-302150	CAL150	150 litres	500	897	216	¾"	6 bar	2.5 bar
Z1-302200	CAL200	200 litres	600	812	225	¾"	6 bar	2.5 bar
Z1-302250	CAL250	250 litres	630	957	245	¾"	6 bar	2.5 bar
Z1-302300	CAL300	300 litres	630	1105	245	¾"	6 bar	2.5 bar
Z1-302400	CAL400	400 litres	630	1450	245	¾"	6 bar	2.5 bar
Z1-302500	CAL500	500 litres	750	1340	290	1"	6 bar	2.5 bar
Z1-302600	CAL600	600 litres	750	1555	290	1"	6 bar	2.5 bar
Z1-302750	CAL700	700 litres	750	1755	290	1"	6 bar	2.5 bar
Z1-302800	CAL800	800 litres	750	1855	290	1"	6 bar	2.5 bar
Z1-302900	CAL900	900 litres	750	2105	290	1"	6 bar	2.5 bar



AIRFIELD INDUSTRIAL ESTATE, HIXON, STAFFORD, ST18 0PF  
 T. 01889 272180 F. 01889 272181 SALES@INTATEC.CO.UK  
 WWW.INTATEC.CO.UK