



Made by Ginlong Technologies

# LAN Stick Quick User Guide

Ginlong-LANS Version: 1.0



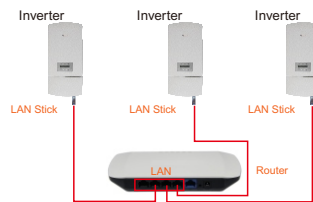
SN:

## Delivery Content

- 1 pc LAN Stick
- 1 pc LAN Stick Quick User Guide

## Introduction

LAN Stick is mainly used in Solis inverters to realize simple and quick access to Internet. Users can easily check device information by logging in the monitoring center ([www.ginlongmonitoring.com](http://www.ginlongmonitoring.com)). The communication topology is as shown below:



## Description of Symbols

To ensure normal use of the device, before using the device, be sure that:

- The connected router can normally access to Internet;
- The communication address of the inverter MUST BE "01", which is default value.

## 1 Electrical Connection

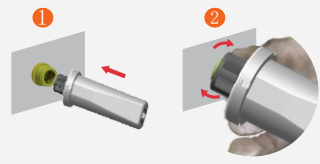
Connect LAN Stick to the corresponding interface on the inverter. Solis-5K-2G-US is used as an example in this manual. Please perform relevant operations as indicated below:



LAN Stick Interface

### LAN Stick Installation

1. Insert LAN Stick to COM port.
2. Fasten the LAN Stick.



### NOTES

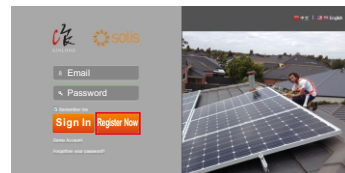
The device must be kept away from large metal objects and electrical devices with strong magnetic fields, such as microwave oven, refrigerator, cordless phone, concrete wall, PV panel and metal wall, to ensure the communication quality. Communication quality may be affected in lightning storms.

## 2 Register on Ginlongmonitoring

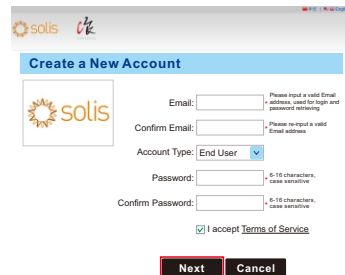
Open a web browser and visit the Ginlongmonitoring website:<http://www.ginlongmonitoring.com>

Supported browsers: Internet Explorer 8+, Google Chrome 10+, Firefox 9+, Safari 4+

1 Click **Register Now**.



2 Fill in your email address and password, then click **Next**.



3 Fill in the information as required, then click **Complete**.

### Create a New Account

Type Of Site: **PV Power Plant**

Site Name: \_\_\_\_\_ (Maximum 20 Letters)

Upload Image: **Default.jpg** (Recommended image size: 300px×220px)

OK

Country: **China**

Province/State: **Zhejiang**

City: **Ningbo**

Street: \_\_\_\_\_ (Locate Your Site On Map)

ZIP Code: \_\_\_\_\_

Timezone: **(GMT+08:00)B**

Number Format: **1234567.89**

Temperature Unit: **F**

System Size(kWp): \_\_\_\_\_

Feed-in Tariff(FIT): **AUD**

Panel Type: **3S**

Inverter Type: **Ginlong**

Description: \_\_\_\_\_

Make This Site Public

**Registration**

Datalogger S/N: \_\_\_\_\_

Installer: \_\_\_\_\_

Specific type: \_\_\_\_\_

Serial number of inverter: \_\_\_\_\_

Number of installation: \_\_\_\_\_

**Contact**

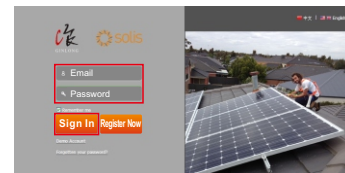
Name: \_\_\_\_\_

Phone: \_\_\_\_\_

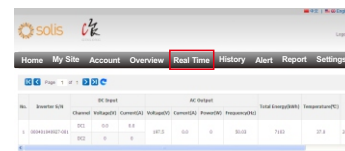
**Complete** **Cancel**

3 Log in Ginlongmonitoring website to manage power station

After successful registration, open the login page of Ginlongmonitoring and input your E-mail and password to access the monitoring system and start monitoring and management of power plants.

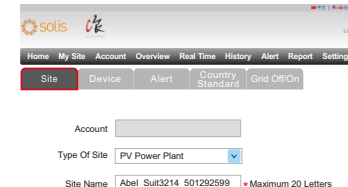


**Notice:** If users access the monitoring system for the first time within ten minutes after successful registration, please check the "Real Time" interface. If there are data shown in the Real Time interface, network setting of data logger and other connection are deemed successful.

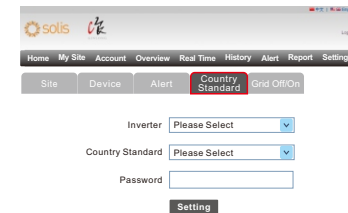


4 Remote setting of Ginlongmonitoring

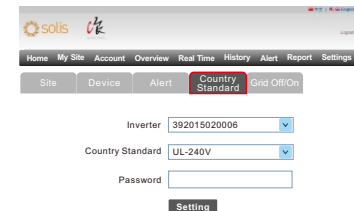
For example, set the station for 'PV Power Plant' as the following pictures.



There are four remote setting functions of 'Grid Off/On', 'Country Standard', 'Controller' under the 'Setting' choice.



There are two remote setting functions of 'Grid Off/On', 'Country Standard', under the 'Setting' choice.



**Ningbo Ginlong Technologies Co., Ltd.**  
 NO. 57 Jintong Road, Binhai Industrial Park  
 Xiangshan, Ningbo, Zhejiang, 315712, P.R.China  
 Tel: +86(0)574 6578 1806  
 Fax: +86(0)574 6578 1606  
 Email: [info@ginlong.com](mailto:info@ginlong.com)  
 Web: [www.ginlong.com](http://www.ginlong.com)

Please record the serial number of your monitor and quote this when you contact us.