



# Solfit Installation Manual 10/21

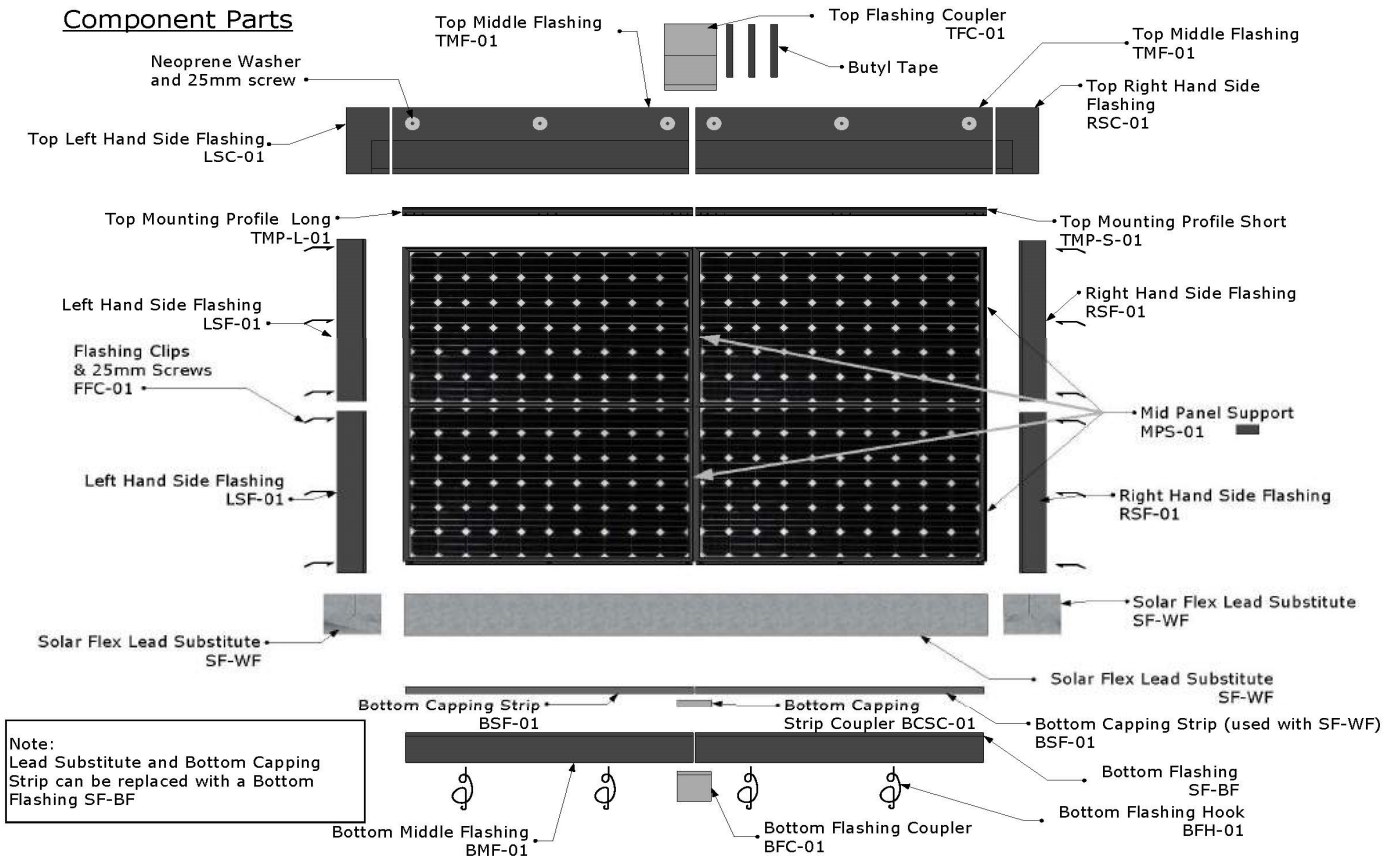


Installation instruction videos visit [www.Solfit.co.uk](http://www.Solfit.co.uk)

On site installer installation support contact Ewan 07775897980

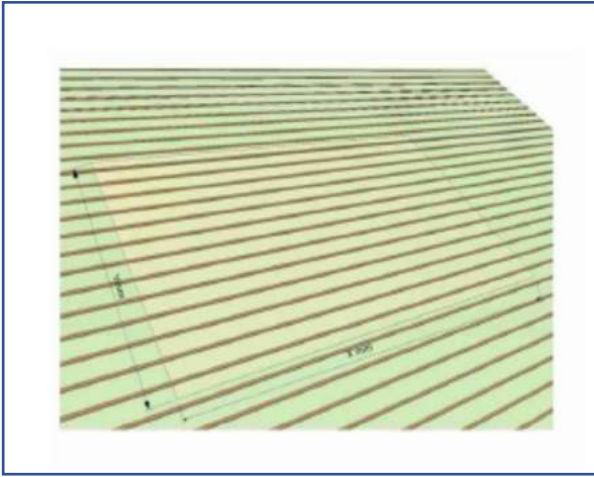
E; [sales@solfit.co.uk](mailto:sales@solfit.co.uk)

# SolFit Component parts



Installation instruction videos visit [www.Solfit.co.uk](http://www.Solfit.co.uk)

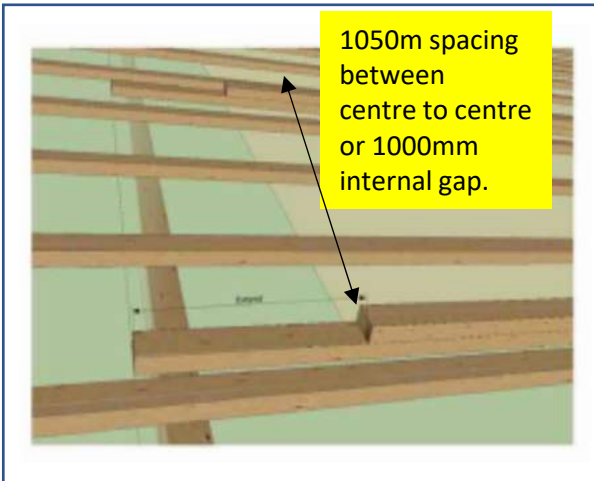
On site installer installation support contact Ewan 07775897980



### 1) Measure size of array

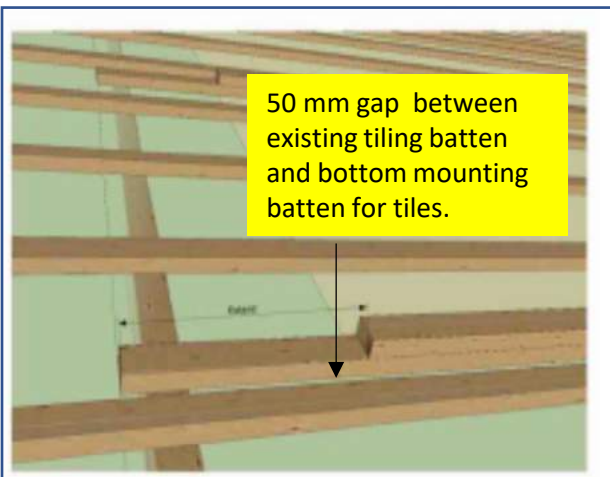
- X (width) = 1.8m x nom of panels
- Y = (height) 1.04m x number of panels
- Side flashing = 150 mm
- Top flashing = 300mm
- Bottom flashing = 150mm

Allow space for 1 x tile or slate at bottom of array or 150mm if using metal bottom flashing. If using lead or lead substitute the array can go to gutter.



### 2) Fit mounting battens

- Use only 25mm x 50mm battens
- Measure the height of array from bottom of the array up the roof,
- Fit double mounting battens at 1050mm metre spacing's. centre to centre or 1000 m gap between batons
- Secure lower battens with 50mm screws on every rafter



### 3) 50mm gap between existing & mounting batten

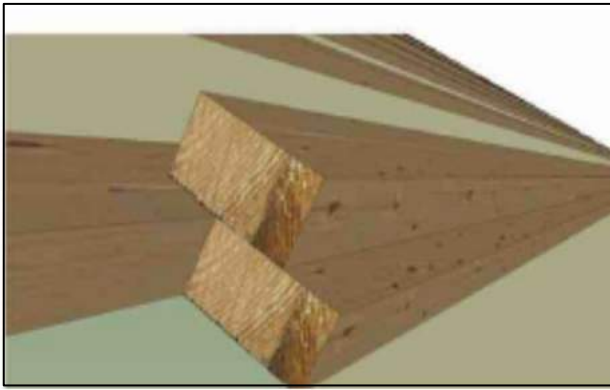
- 50mm gap left between lower existing tiling batten and the lowest panel mounting batten to allow space for the tile nib, No gap required for slate.
- TIP; Use a 25mm x 50mm batten as a spacer
- No gap required for slates



### 4) Measuring gap between battens

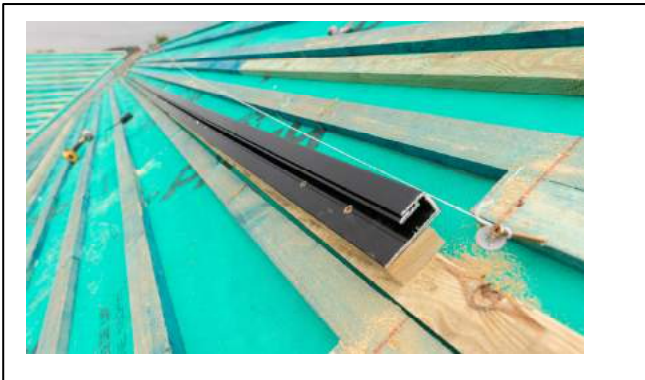
To space mounting battens at 1.05m spacing's, measuring sticks can be very useful, be sure to cut them square and exact for **50mm batten**.

**Length = 1000mm**



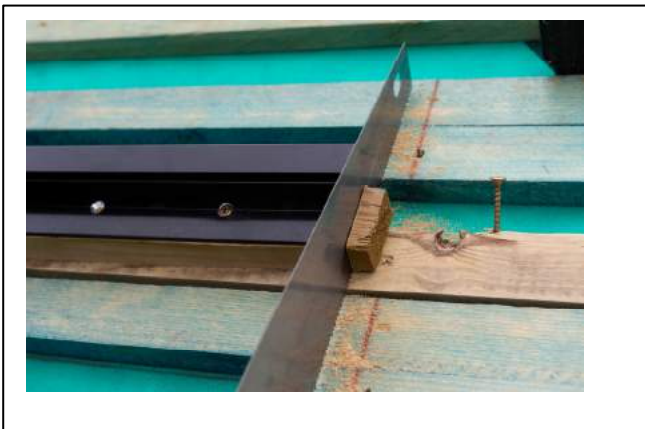
### 5) Spanning existing battens

- Span existing batten mounting battens 1m spacing centre- centre. Fix lower batten with 1x 50mm screw per rafter
- Fix upper batten with 1 x 50mm screw, 1 x 500m approx.



### 6) Fit Top Mounting profile

- **Very Important!** Fit 1 short end mounting profile per array (30mm shorter than the others)
- Fix top mounting bars straight & parallel
- Set Bottom edge of mounting flush with bottom of top batten
- Secure with 6 screws per profile



### 7) Cut top mounting batten RHS

- Cut top mounting batten flush with RHS end of mounting profile



### 8) Cut top mounting batten LHS

- Cut batten flush with the LHS edge of mounting profile



### 9) Additional top flashing support batten

- Fit top flashing batten 270mm approx.
- Hook flashing into mounting groove
- Fit top flashing flash with LHS edge of mounting profile
- Secure top flashing with 1 x 25mm screw and neoprene washer in top centre of flashing



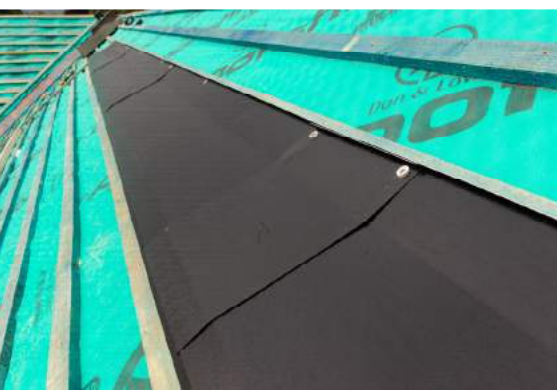
### 10) Fit top flashing joiners

- Attach three strips of Butyl tape to top flashing joiner and stick joiner to top flashing.



### 11) Top flashing joiner

- Secure top flashing joiner on to top flashing using 2 x 25mm screw and neoprene washers



### 12) Fit Top flashings and joiners

- Fit top flashings and joiners for full length of array



#### 14) Insert Panel 1

- Insert Top RHS panel



#### VERY IMPORTANT

#### 15) Over shoot top mounting profile

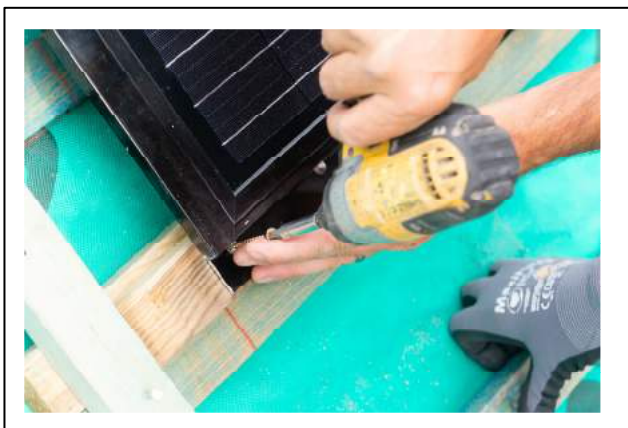
- Overshoot by 20mm + past the LHS edge of the extrusion



#### VERY IMPORTANT

#### 15b ) Over shoot top mounting

- Overshoot profile by 20mm + past the LHS edge of the extrusion
- 

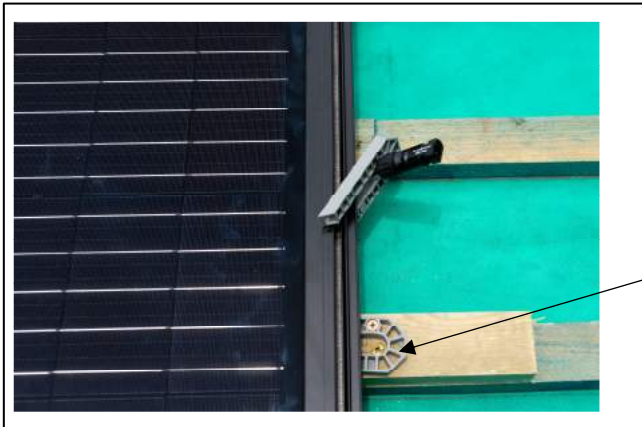


#### 16) Fix panel with 6 screws per panel



### 17) Secure MC4 lead

- Secure lead temporarily to frame with panel shim to prevent from Loosing lead behind the panel



### 18) Fix Mid Panel support

- Fix mid panel support shim to small section of addition roofing baton with 50mm screw to existing roof batten as close to centre of panel



### 19) Connect panels

- Connect panels making sure that the MC4 connectors 'click' when connected. Fire hazard if not connected properly.



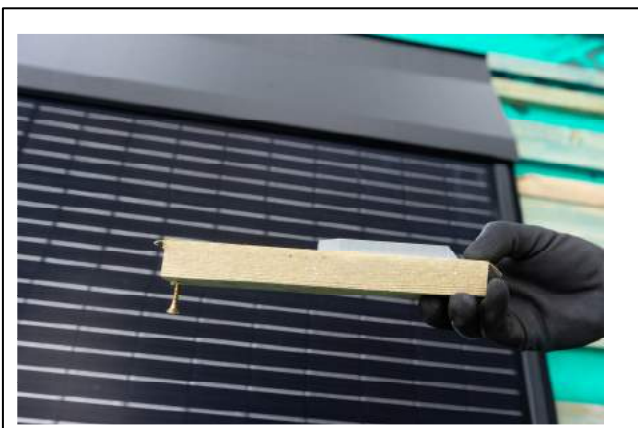
### 20) Fit addition panels

- Slide RHS panel next to LHS panel - interconnecting side profiles
- Push each panel as far as it will go flush and level with its neighbour
- Secure panels with 6 screws per panel



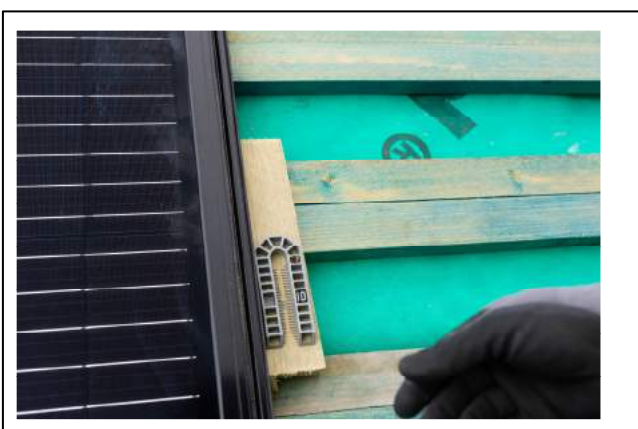
### 21) DC cabling

- Pass cable under DC cables under battens for lower row.
- If roofs are sarked with boarding a notch will need to be cut



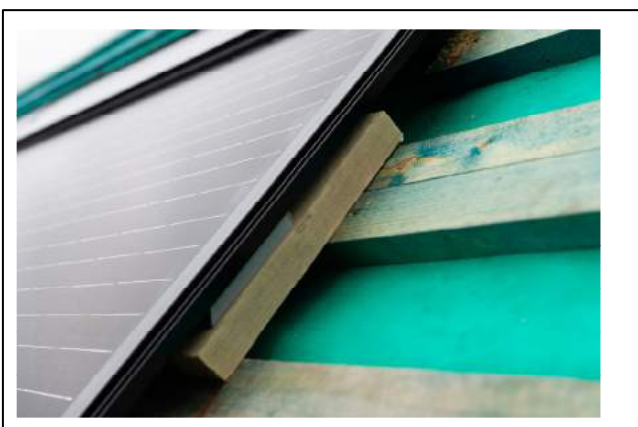
### 22) Assemble RHS mid panel support

- Assemble mid panel support with plastic shim,
- section of 250mm approx. section of baton and a 50mm screw on under side of batten to act as a 'hook'



### 23) Hook RHS mid panel support

- Hook over existing baton to support panel



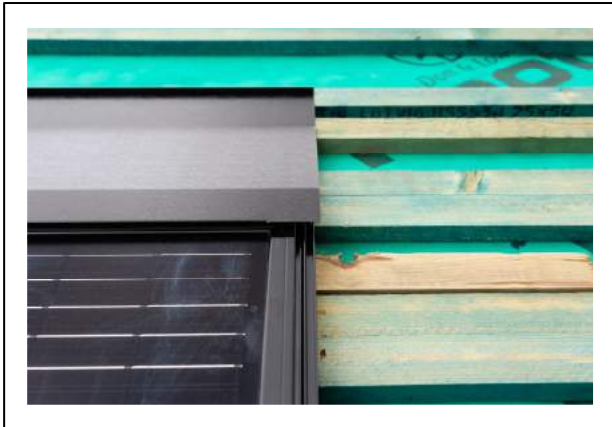
### 24) Push mid panel support into position

- Push RHS panel support flush with RHS frame





### 25) Fit top row of panels



### 26) When top RHS panel fitted Top flashing will over shoot panel



### 27) Fit additional rows of panels

- Fit additional rows of panels pushing tight and level



### 28) Cut mounting battens

- Cut flush battens flush with LHS and RHS edge of each panel



### 29) Fit flexible bottom corner flashing

- Fit flexible bottom corner flashing  
Allow for 200mm approx. with outside edge turned up to prevent wind blown rain



### 30) Underlap flexible bottom flashing

- Underlap panel by approx. 150mm



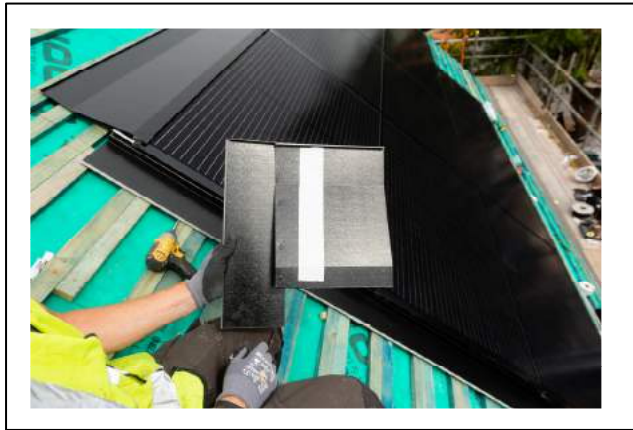
### 31) Bottom Flashing

- Allow 120mm over lap approx.



### 32) Secure Bottom panel

- Secure panel with 6 screws



### 33) Top RHS corner

- Fit Butyl Tape to Top LHS corner flashing



### 34) Insert LHS corner flashing

- Push Top LHS Flashing under top flashing



### 35) Fit LHS Flashing

- Fit LHS flashing by inserting into side profile and rotating



### 36) Fit LHS flashing

- Rotate and slide LHS flashing up into position



### 37) Fit additional LHS flashings

- Fit additional flashings and slide into position



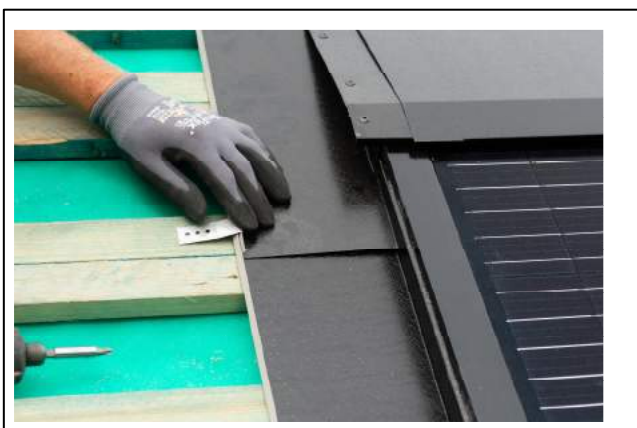
### 38) Fit bottom LHS flashing

- Fit LHS flashing overlapping flexible bottom flashing



### 39) Secure top corner flashing

- Secure with 25mm screw and neoprene washer



### 40) Fit flashing clips

- Secure side flashings with flashing clips & 25mm screws



#### 41) RHS top corner flashing

- Fit Butyl tape to top RHS corner



#### 42) Fit RHS top corner flashing

- Underlap top RHS flashing under top flashing



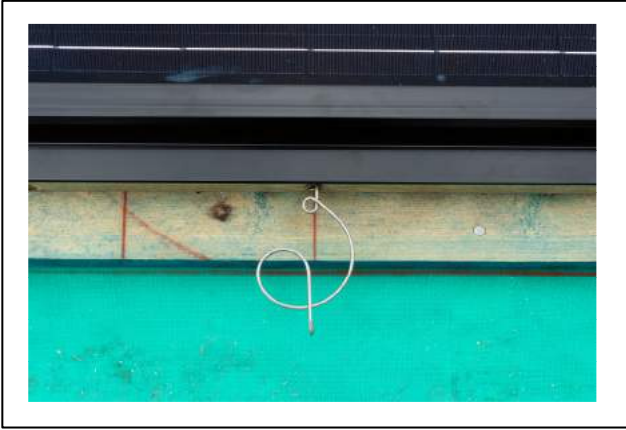
#### 43) Fit RHS flashing

- Slide RHS flashing into position under Top RHS flashing



#### 44) Fit Further RHS Flashing

- Slide Further RHS flashings into place and secure with Flashing clips



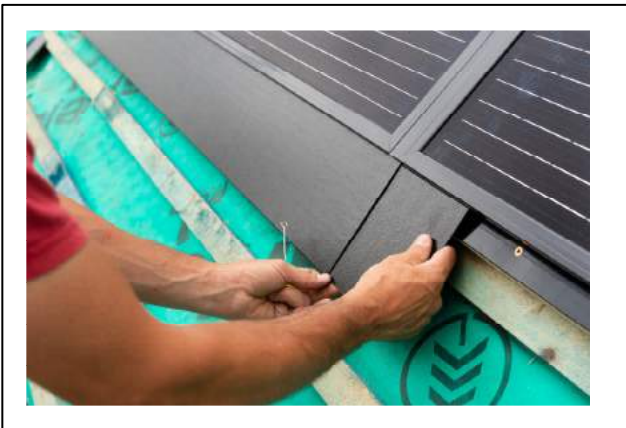
#### 45) Fit bottom flashing hooks

- Fit 2 x flashing hooks per bottom flashing



#### 46) Fit bottom flashing and bottom flashing joiner

- Push bottom joiner into position into bottom flashing



#### 47) Slide Bottom flashing joiner into position

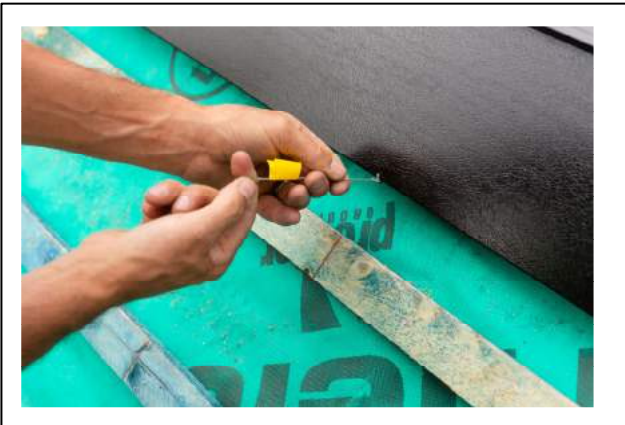


#### 48) Fit next bottom flashing

- Slide in next bottom flashing into position



#### 49) Push bottom flashing together



#### 50) Pull flashing hook

- Pull flashing hook over bottom edge of flashing.
- Note; If using tiles, bottom flashings can be lifter and tiles fitted. If using slates bottom flashing will have to be removed to fix slates and refitted.



#### 51) Corner detail

When slating or tiling bottom course fits under bottom flashing and flexible corner. Side slates/ tiles fit over side flashings and flexible corner flashing



#### 52) Completed slate roof



### 1) Lead bottom flashing

- Fit double battens
- Run lead full length of the array and over shoot bottom of panels by 200mm on LHS & RHS.
- Lead length not to exceed 1500mm, overlap 150mm
- Fix with Stainless steel screws



### 2 ) Fitting bottom capping strips

- Apply very small bead of silicone on bottom edge of panel



### 3) Bottom capping strip

- Push in bottom capping strip and capping and internal capping strip joiners



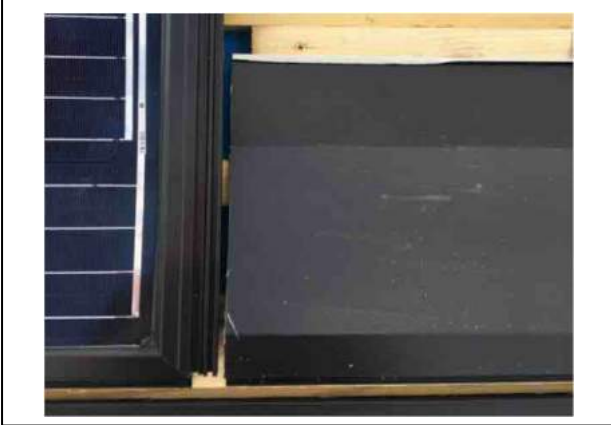
### 4) Lead or lead substitute bottom flashing detail

- When using profiled Roman tiles Lead or lead substitute can replace metal bottom flashing



# Installation Manual To Fit External and Internal Flashings

## External RHS Flashings

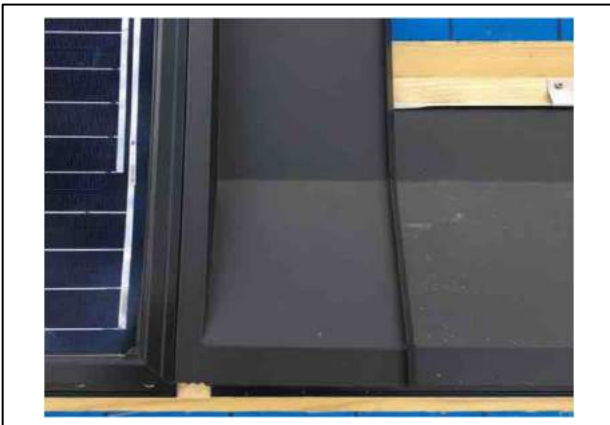


- 1) Fit top mounting profile and flashing**
  - Fit top mounting profile and top flashing  
Flattening top 150mm edge

1



- 2) To Fit an external RHS flashing**
  - Slide RHS external flashing into position



- 3) Fit external RHS flashing**
  - Secure and seal external flashing with butyl tape strip



### 3) Fit RHS External corner flashing

- Run vertical length of Butyl tape on RHS, underside of External side flashing (image not shown)
- Over lay external RHS flashing over top flashing, remember to slide the flashing into position from the bottom
- Secure flashing with clips & tec screws

## External LHS Flashings



To Fit an external LHS flashing as shown



### 1) Cut Top mounting bar

- Cut mounting profile by 5cm, allow a 5mm gap between the mounting bar and the next panel.



### 2) Fix top mounting bar

- Fix top mounting bar next to bottom bar of panel as shown



**3) Fix top mounting bar**

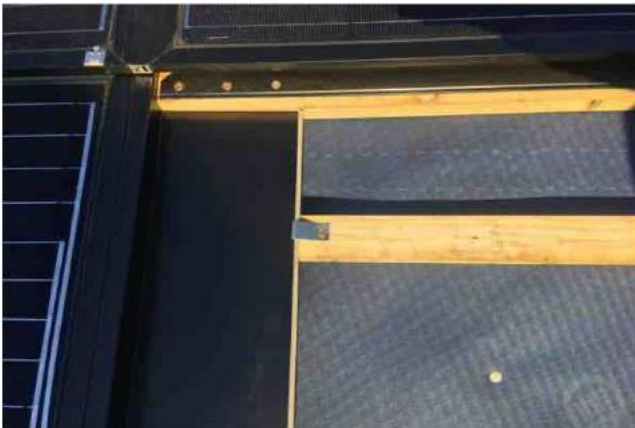
- Fix top mounting bar next to bottom bar of panel as shown



**4) Fit flashings**

- Flatten the return of the top flashing 150mm from edge and fix with Tek screws or clips
- Fit length of butyl tape un LHS of underside of external side flashing
- Fit RHS external flashing and secure with clips or Tek screws

**RHS Internal Corner Flashing  
(LHS Internal Flashing the same as below)**



**1) Slide RHS flashing into position**

- Secure with flashing clips



**2) Fit internal joining plate**



**3) Fit internal corner joining plate**

- Secure with butyl tape



**4) Seal with a strip of butyl tape**



**5) Fit bottom flashing**