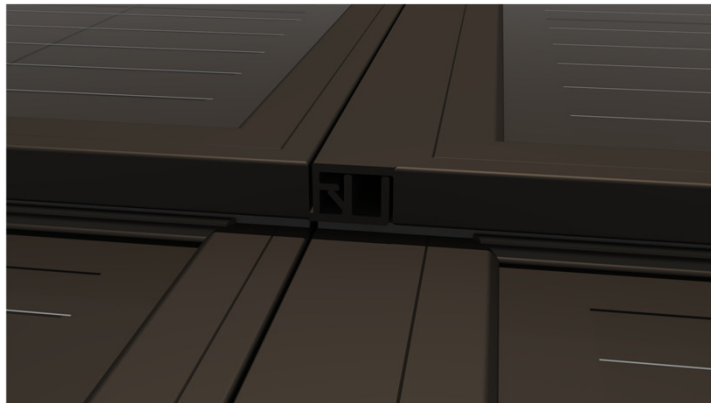




## Solfit 370Wp Installation Manual 10/21

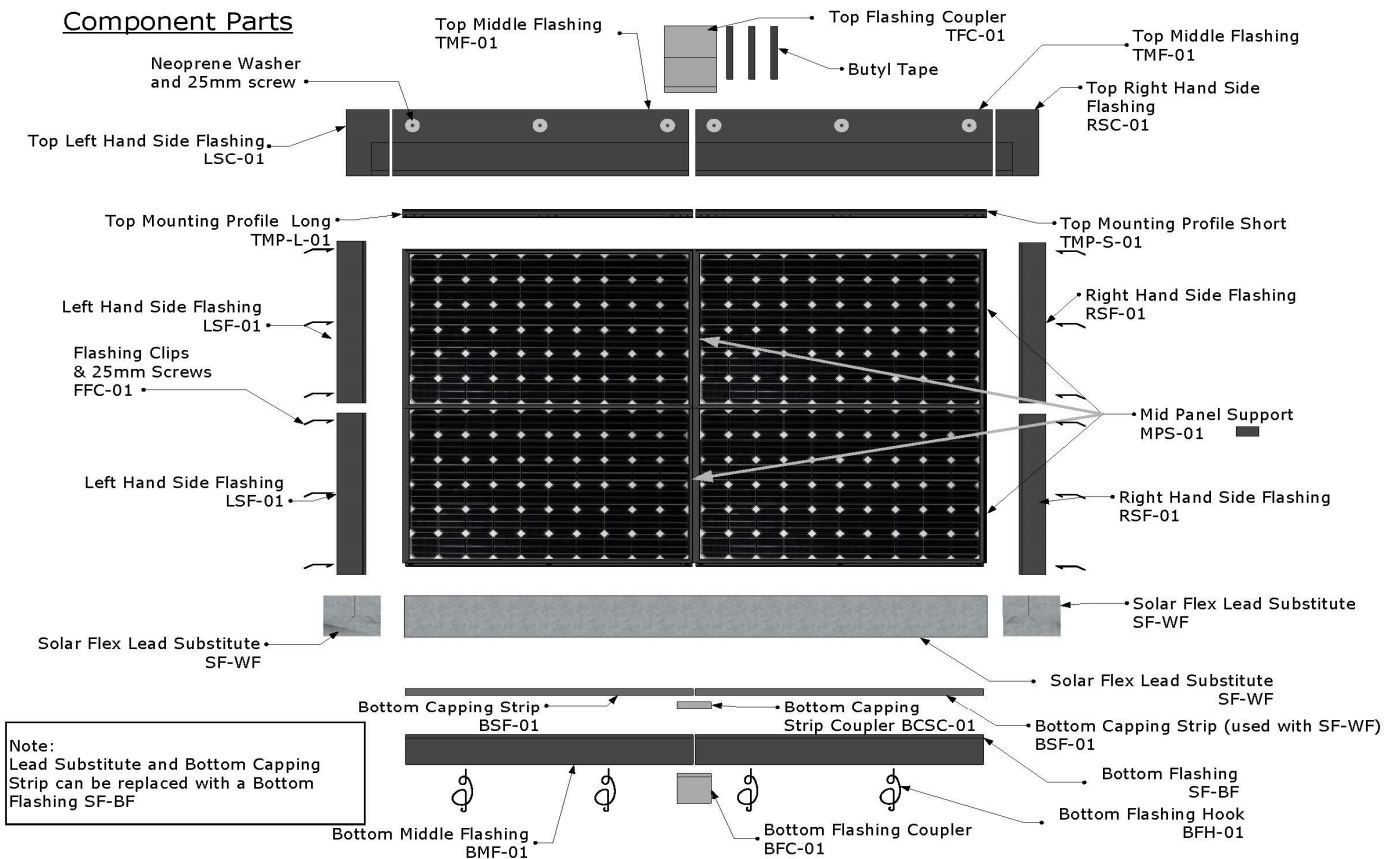


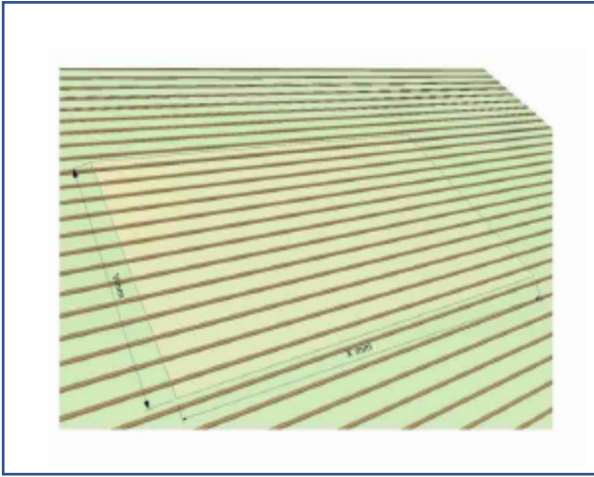
Installation instruction videos visit [www.Solfit.co.uk](http://www.Solfit.co.uk)

On site installer installation support contact Ewan 07775897980

E; [sales@solfit.co.uk](mailto:sales@solfit.co.uk)

# SolFit Component parts

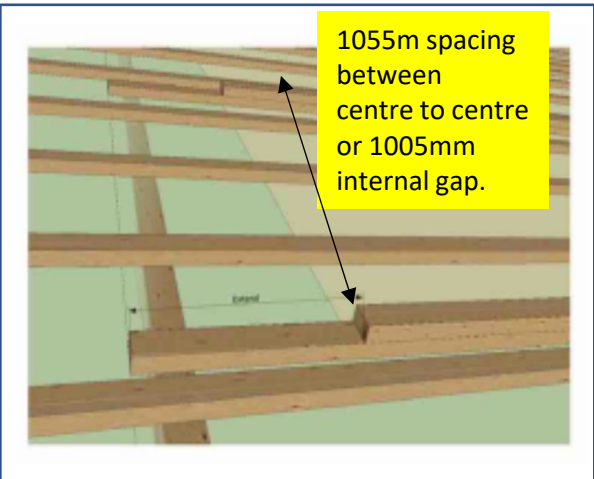




### 1) Measure size of array

- X (width) = 1.8m x nom of panels
- Y = (height) 1.04m x number of panels
- Side flashing = 150 mm
- Top flashing = 300mm
- Bottom flashing = 150mm

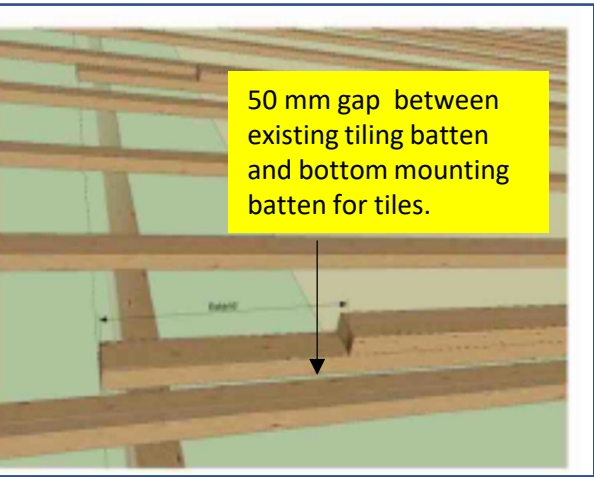
Allow space for 1 x tile or slate at bottom of array or 150mm if using metal bottom flashing. If using lead or lead substitute the array can go to gutter.



1055m spacing between centre to centre or 1005mm internal gap.

### 2) Fit mounting battens

- Use only 25mm x 50mm battens
- Measure the height of array from bottom of the array up the roof,
- Fit double mounting battens at 1055mm metre spacing's. centre to centre or 1005 m gap between batons
- Secure lower battens with 50mm screws on every rafter



50 mm gap between existing tiling batten and bottom mounting batten for tiles.

### 3) 50mm gap between existing & mounting batten

- 50mm gap left between lower existing tiling batten and the lowest panel mounting batten to allow space for the tile nib, No gap required for slate.
- TIP; Use a 25mm x 50mm batten as a spacer
- No gap required for slates

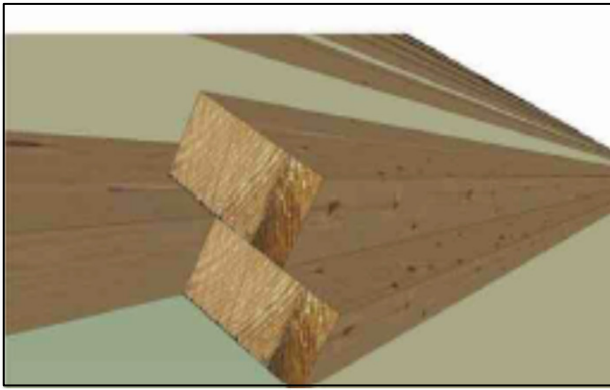


### 4) Measuring gap between battens

To space mounting battens at 1.05m spacing's, measuring sticks can be very useful, be sure to cut them square and exact for **50mm batten**.

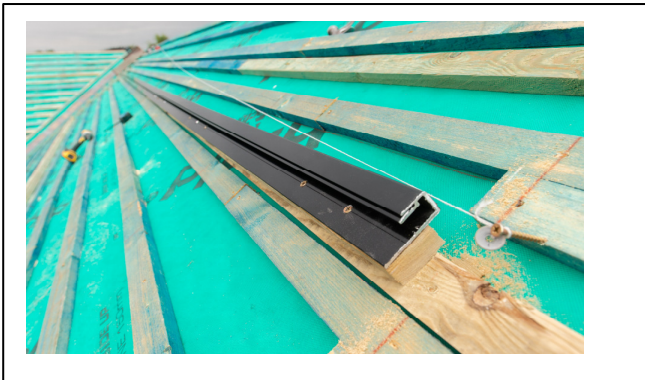
**Length = 1005mm**

**Ensure bottom batten is straight and level as this is where all other measurements come from. A string line can be used.**



### 5) Spanning existing battens

- Span existing batten mounting battens 1m spacing centre- centre. Fix lower batten with 1x 50mm screw per rafter
- Fix upper batten with 1 x 50mm screw, 1 x 500m approx.



### 6) Fit Top Mounting profile

- **Very Important!** Fit 1 short end mounting profile per array (30mm shorter than the others)
- Fix top mounting bars straight & parallel
- Set Bottom edge of mounting flush with bottom of top batten
- Secure with 6 screws per profile



### 7) Cut top mounting batten RHS

- Cut top mounting batten flush with RHS end of mounting profile



### 8) Cut top mounting batten LHS

- Cut batten flush with the LHS edge of mounting profile



### 9) Additional top flashing support batten

- Fit top flashing batten 270mm approx.
- Hook flashing into mounting groove
- **Fit top flashing flush with LHS edge of mounting profile**
- Secure top flashing with 1 x 25mm screw and neoprene washer in top centre of flashing



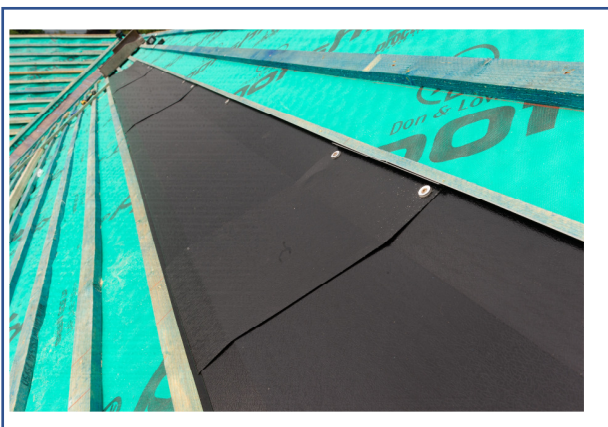
### 10) Fit top flashing joiners

- Attach three strips of Butyl tape to top flashing joiner and stick joiner to top flashing.



### 11) Top flashing joiner

- Secure top flashing joiner on to top flashing using 2 x 25mm screw and neoprene washers



### 12) Fit Top flashings and joiners

- Fit top flashings and joiners for full length of array



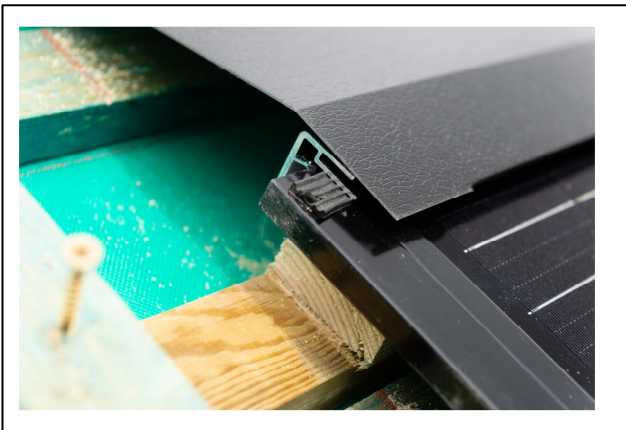
#### 14) Insert Panel 1

- Insert Top RHS panel



#### VERY IMPORTANT

- 15) **Over shoot top mounting profile**
- **Overshoot by 20mm + past the LHS edge of the extrusion**



#### VERY IMPORTANT

#### 15b ) Over shoot top mounting

- **Overshoot profile by 20mm + past the LHS edge of the extrusion**
- **Push in tight and square**

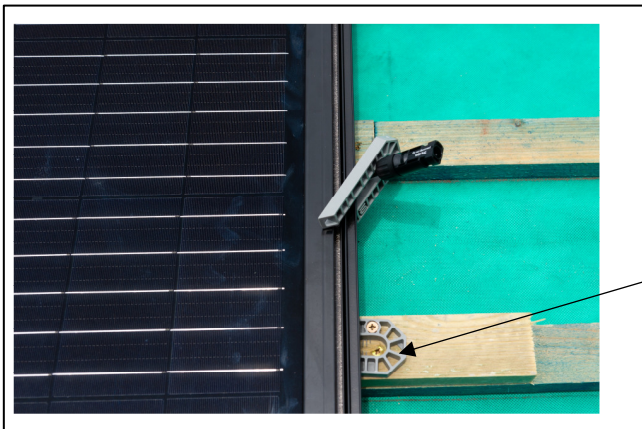


- 16) **Fix panel with 6 screws per panel**  
**Don't let the panel drop or slip down as it will not be square**



### 17) Secure MC4 lead

- Secure lead temporarily to frame with panel shim to prevent from Loosing lead behind the panel



### 18) Fix Mid Panel support

- Fix mid panel support shim to small section of addition roofing baton with 50mm screw to existing roof batten as close to centre of panel



### 19) Connect panels

- Connect panels making sure that the MC4 connectors 'click' when connected. Fire hazard if not connected properly.



### 20) Fit addition panels

- Slide RHS panel next to LHS panel - interconnecting side profiles
- Push each panel as far as it will go flush and level with its neighbour
- Secure panels with 6 screws per panel



### 25) Fit top row of panels

**Make sure they are pushed in tight and square. Beware of wrinkling EPDM tape preventing them being pushed tight in**



**26) When top RHS panel fitted Top flashing will over shoot panel**



### 27) Fit additional rows of panels

- Fit additional rows of panels pushing tight and level



### 28) Cut mounting battens

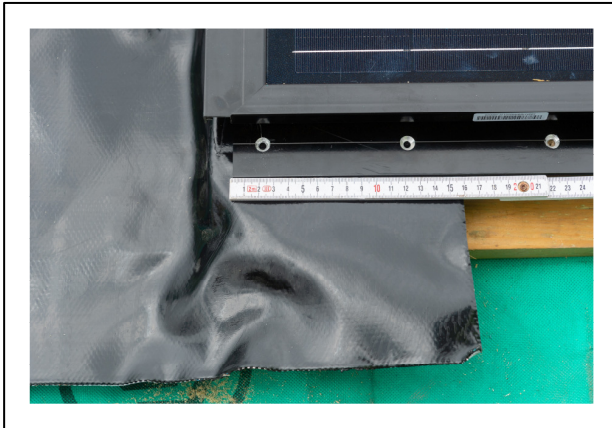
- Cut flush battens flush with LHS and RHS edge of each panel





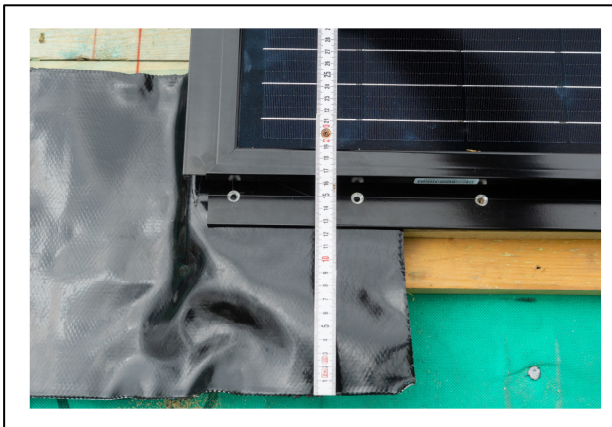
### 29) Fit flexible bottom corner flashing

- Fit flexible bottom corner flashing  
Allow for 200mm approx. with outside edge turned up to prevent wind blown rain



### 30) Underlap flexible bottom flashing

- Underlap panel by approx. 150mm



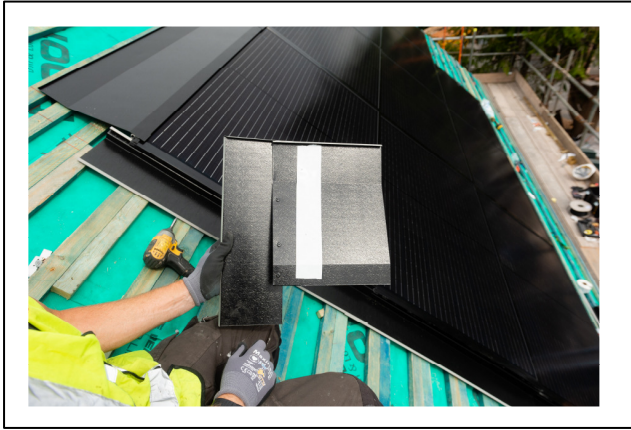
### 31) Bottom Flashing

- Allow 120mm over lap approx.



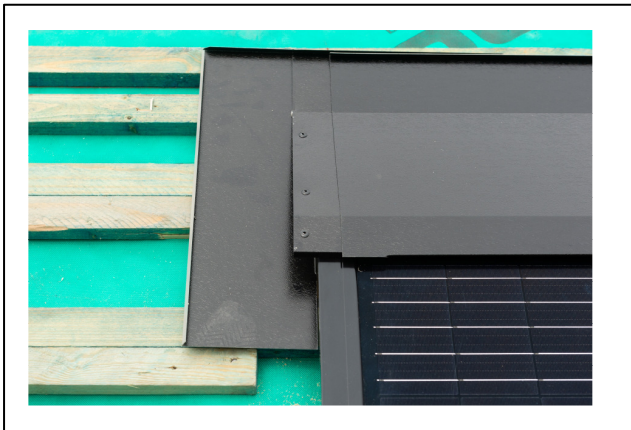
### 32) Secure Bottom panel

- Secure panel with 6 screws



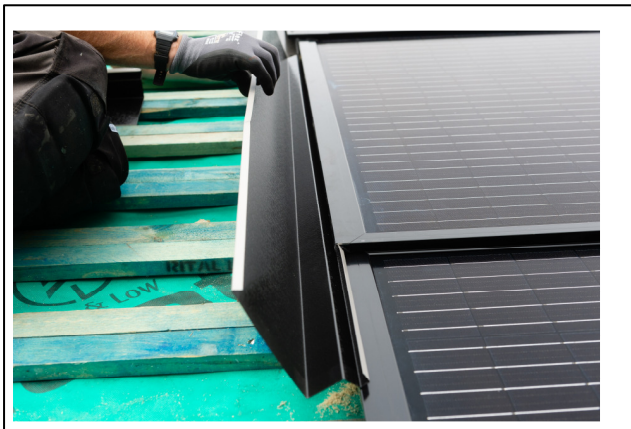
### 33) Top RHS corner

- Fit Butyl Tape to Top LHS corner flashing



### 34) Insert LHS corner flashing

- Push Top LHS Flashing under top flashing



### 35) Fit LHS Flashing

- Fit LHS flashing by inserting into side profile and rotating



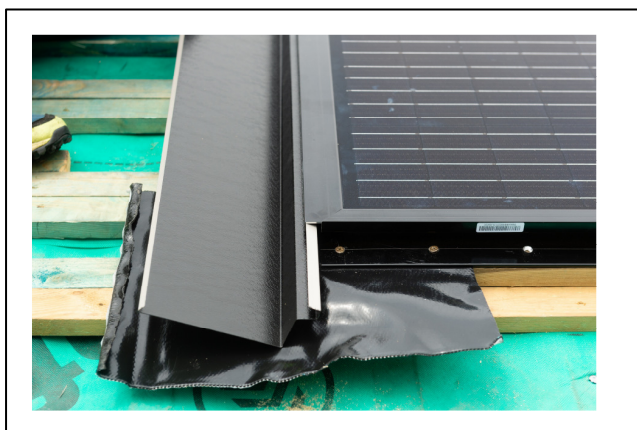
### 36) Fit LHS flashing

- Rotate and slide LHS flashing up into position



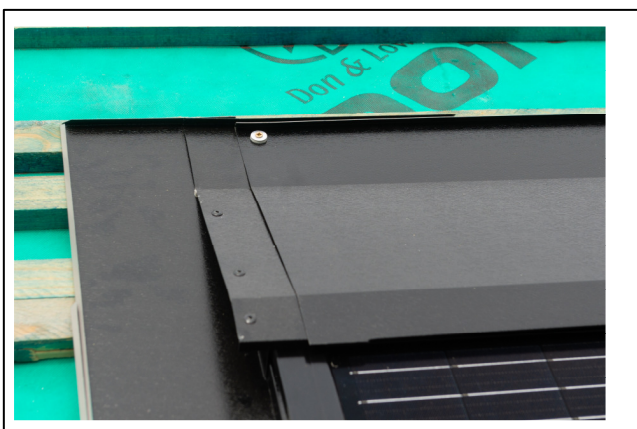
### 37) Fit additional LHS flashings

- Fit additional flashings and slide into position



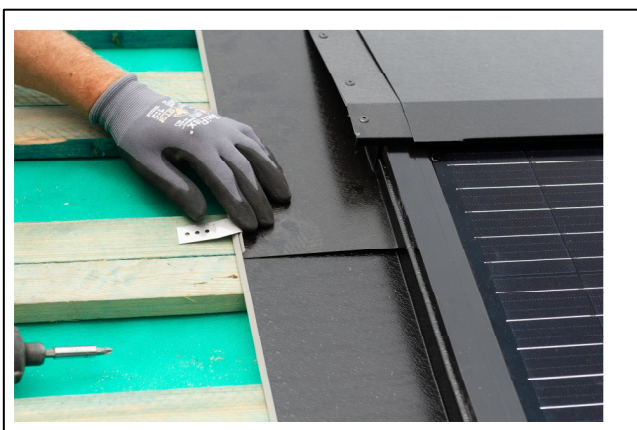
### 38) Fit bottom LHS flashing

- Fit LHS flashing overlapping flexible bottom flashing



### 39) Secure top corner flashing

- Secure with 25mm screw and neoprene washer



### 40) Fit flashing clips

- Secure side flashings with flashing clips & 25mm screws



#### 41) RHS top corner flashing

- Fit Butyl tape to top RHS corner



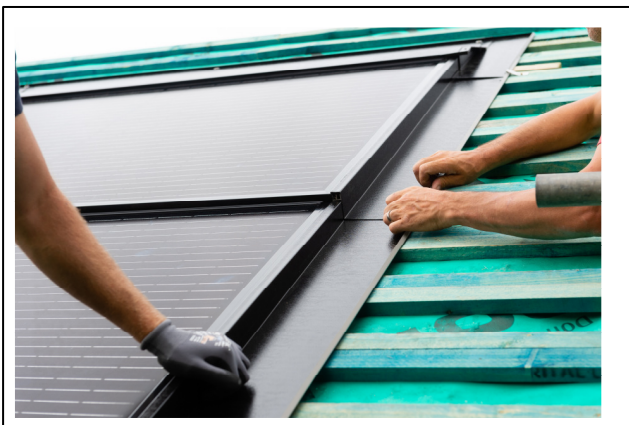
#### 42) Fit RHS top corner flashing

- Underlap top RHS flashing under top flashing



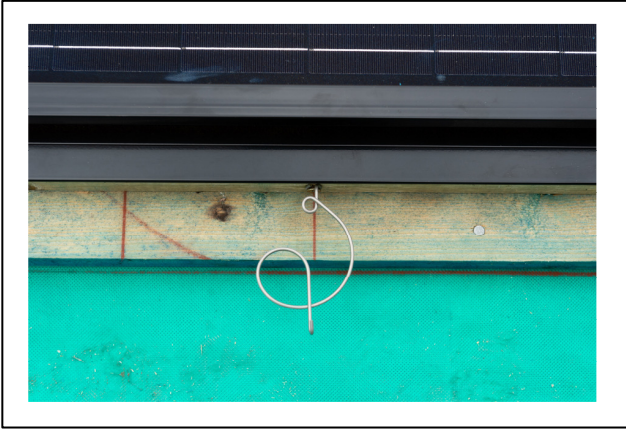
#### 43) Fit RHS flashing

- Slide RHS flashing into position under Top RHS flashing



#### 44) Fit Further RHS Flashing

- Slide Further RHS flashings into place and secure with Flashing clips



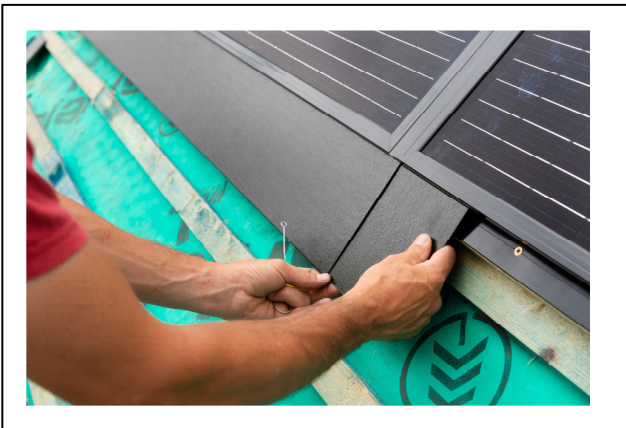
#### 45) Fit bottom flashing hooks

- Fit 2 x flashing hooks per bottom flashing



#### 46) Fit bottom flashing and bottom flashing joiner

- Push bottom joiner into position into bottom flashing

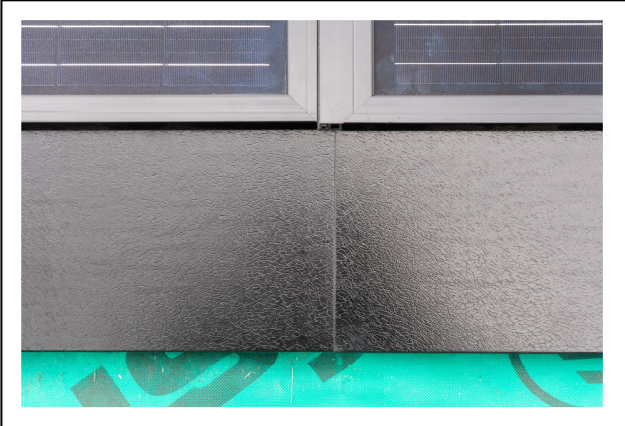


#### 47) Slide Bottom flashing joiner into position

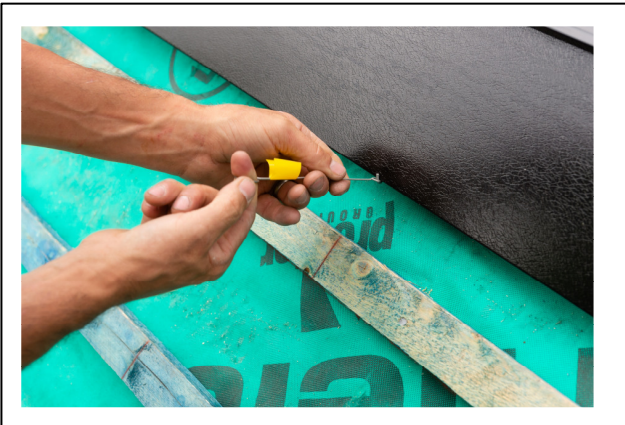


#### 48) Fit next bottom flashing

- Slide in next bottom flashing into position



#### 49) Push bottom flashing together



#### 50) Pull flashing hook

- Pull flashing hook over bottom edge of flashing.
- Note; If using tiles, bottom flashings can be lifter and tiles fitted. If using slates bottom flashing will have to be removed to fix slates and refitted.



#### 51) Corner detail

When slating or tiling bottom course fits under bottom flashing and flexible corner. Side slates/ tiles fit over side flashings and flexible corner flashing



#### 52) Completed slate roof

## Fitting Flexible bottom flashing, Lead or lead substitute



### 1) Flexible bottom flashing

- Fit double battens
- Run lead full length of the array and over shoot bottom of panels by 200mm on LHS & RHS.
- Lead length not to exceed 1500mm, overlap 150mm
- Fix with Stainless steel screws



### 2 ) Fitting bottom capping strips

- Apply very small bead of silicone on bottom edge of panel



### 3) Bottom capping strip

- Push in bottom capping strip and capping and internal capping strip joiners and end caps



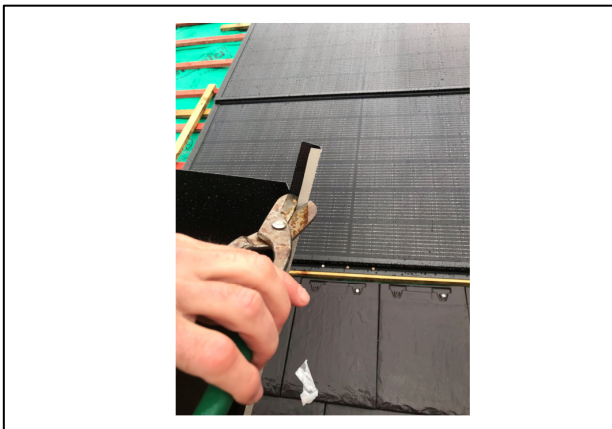
### 4) Lead or lead substitute bottom flashing detail

- When using profiled Roman tiles Lead or lead substitute can replace metal bottom flashing

## Fitting Internal LHS & RHS Flashing & couplers part 1 & 2



**1) LHS Internal Flashing couplers Part 1 & 2**

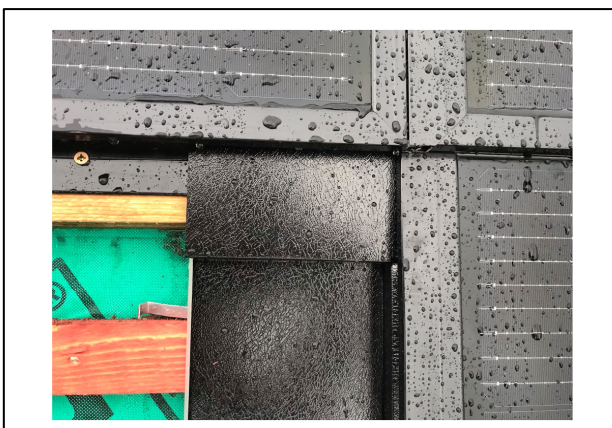


**2) Cut off 'leg' from RHS internal flashing as surplus to requirements**



**3) Fit internal LHS side flashing**

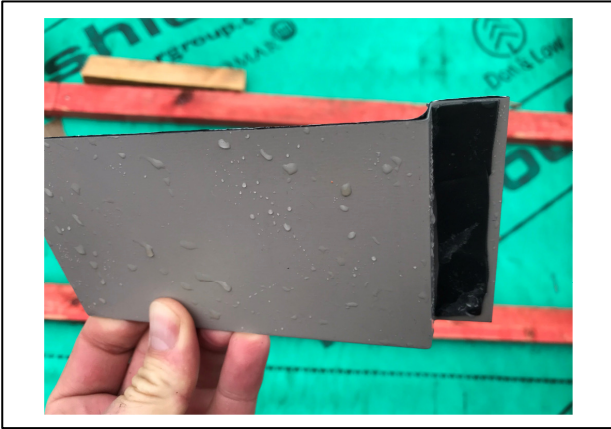
**Fit internal LHS flashing as the standard LHS flashing push it tight with lower mounting batten**



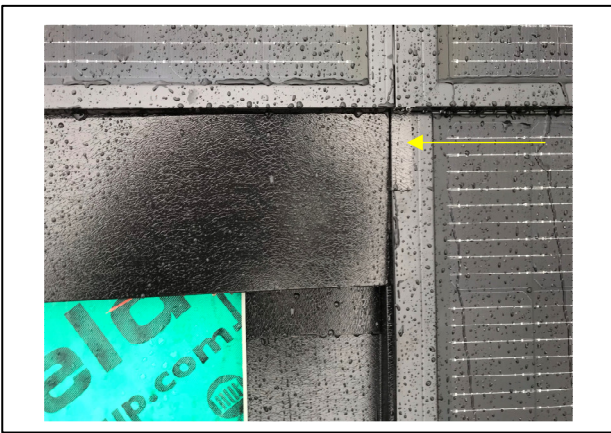
**4) Fit internal coupler part 1**

**Fit internal coupler , pushing under RHS panel frame to hold in position**





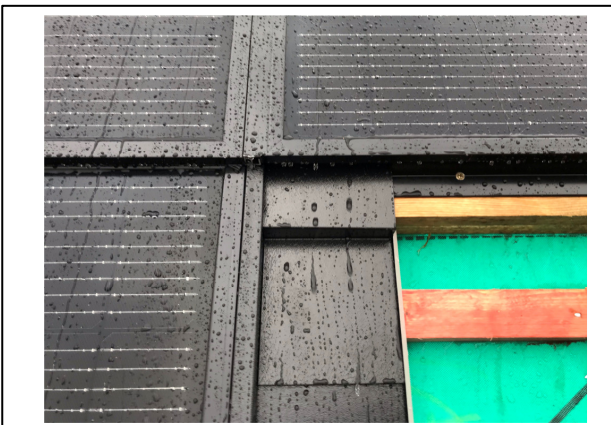
5. Fit 'black tack' butyl tape to under side lip of internal coupler part 2



6. Push Internal coupler under upper panel To hold in position and push in Bottom flashing. ( don't forget to fit bottom flashing hooks as standard with bottom flashings )



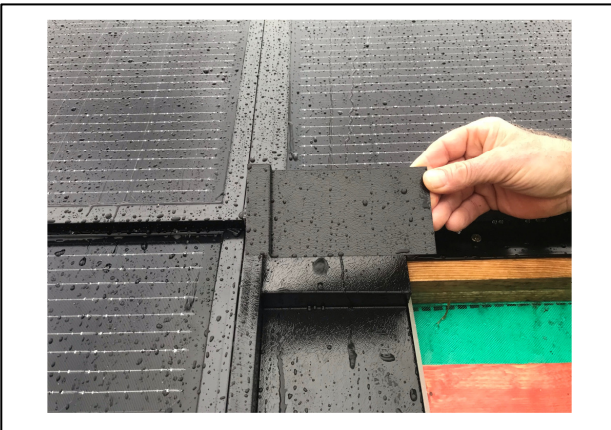
1) RHS internal flashing couplers Part 1 & 2



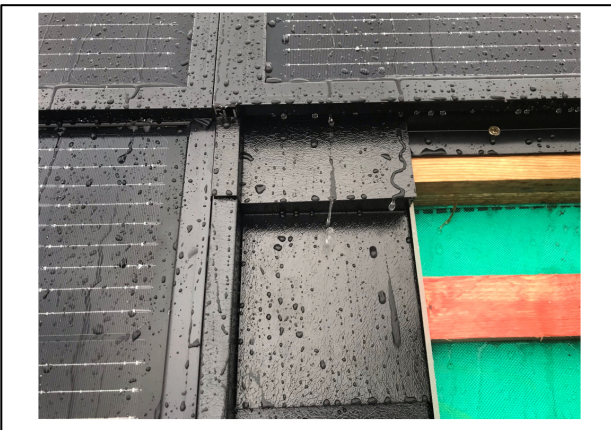
2)  
Fit RHS internal Flashing tight to batten  
Fit internal coupler Part 1 under LHS panel to hold in position



3) Fit 'black tack' butyl tape to under side lip of internal coupler part 2



4) Internal RHS coupler part 2



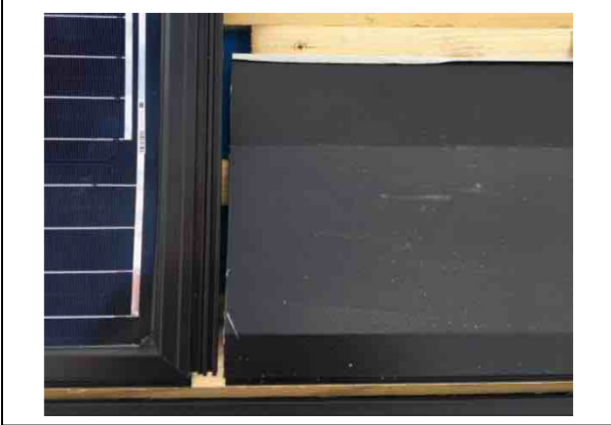
5) Fit internal coupler part 2 under upper Panel to hold in position



6) Fit bottom flashing  
**Don't forget bottom flashing hooks as standard**

# Installation Manual To Fit External and Internal Flashings

## External RHS Flashings



- 1) Fit top mounting profile and flashing**
  - Fit top mounting profile and top flashing  
Flattening top 150mm edge

1



- 2) To Fit an external RHS flashing**
  - Slide RHS external flashing into position



- 3) Fit external RHS flashing**
  - Secure and seal external flashing with butyl tape strip



### 3) Fit RHS External corner flashing

- Run vertical length of Butyl tape on RHS, underside of External side flashing (image not shown)
- Over lay external RHS flashing over top flashing, remember to slide the flashing into position from the bottom
- Secure flashing with clips & tec screws

## External LHS Flashings



To Fit an external LHS flashing as shown



### 1) Cut Top mounting bar

- Cut mounting profile by 3cm, allow a 5mm gap between the mounting bar and the next panel.



### 2) Fix top mounting bar

- Fix top mounting bar next to bottom bar of panel as shown



### 3) Fix top mounting profile

- Fix top mounting profile next to bottom profile of panel as shown
- Allowing 3mm gap between bar and panel to allow External flashing to slide into position
- 



### 4) Fit external flashings

- Flatten the return of the top flashing 150mm from edge and fix with Tek screws or clips
- Fit length of butyl tape un LHS of underside of external side flashing
- Fit RHS external flashing and secure with clips or screw & neoprene washer