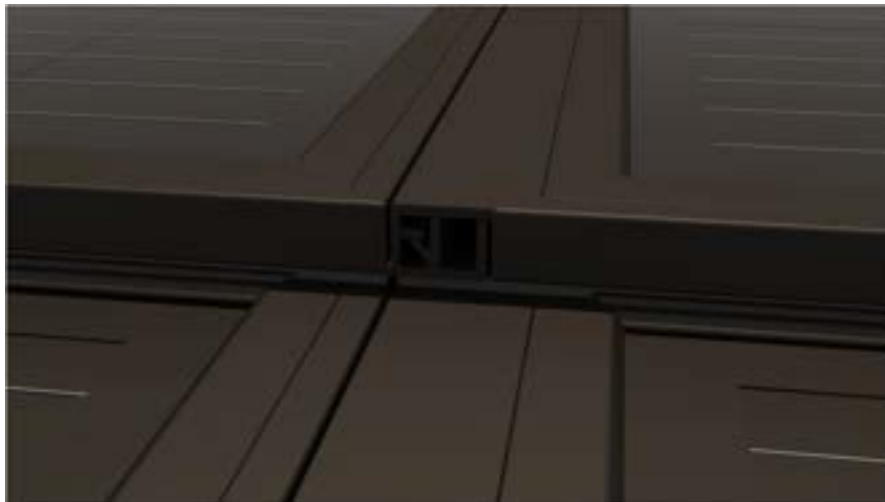




Solfit 375Wp Installation Manual

Landscape version 04/23

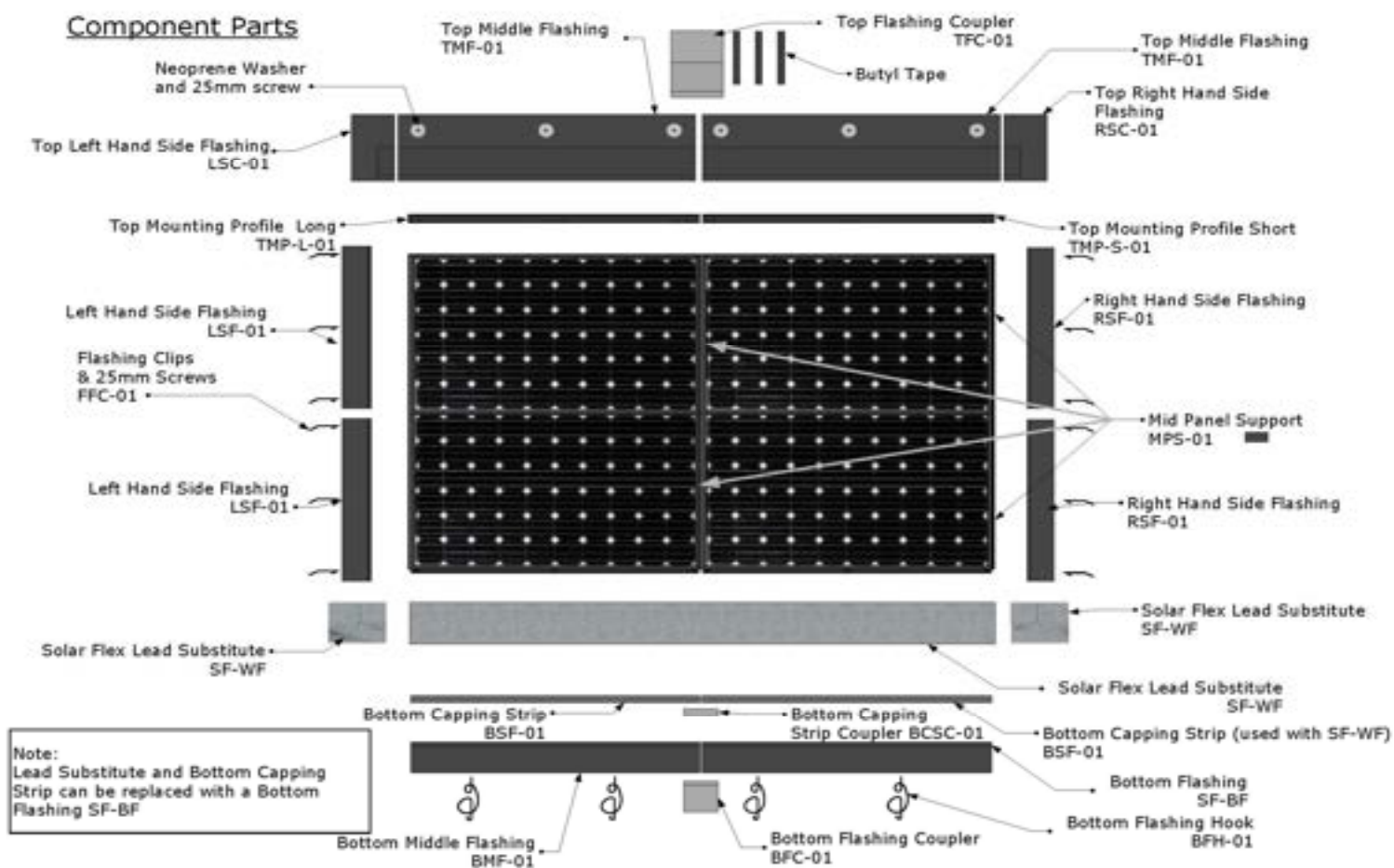


Installation instruction videos visit www.Solfit.co.uk

On site installer installation support contact Ewan 07775897980

E; sales@solfit.co.uk

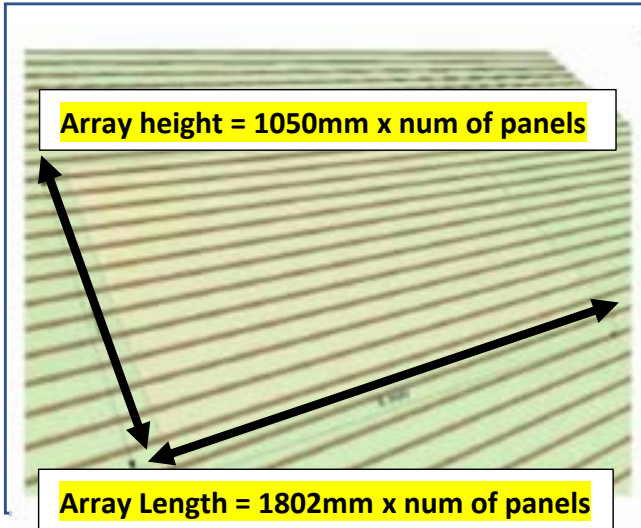
SolFit Component parts



Contents

- 1) Setting roof out
- 2) Top mounting profile
- 3) Top flashing
- 4) Top Flashing & panel fitting
- 5) Fitting top row of panels
- 6) Fitting panels
- 7) Bottom corners
- 8) LHS Flashing
- 8a) LHS Flashing continued
- 9) RHS panel support
- 10) RHS Flashing
- 11) Bottom Flashing
- 12) Bottom Flashing Continued
- 13) Flexible bottom flashing, Lead or lead substitute
- 14) **New** RHS Internal Flashing
- 15) **New** LHS Internal Flashing
- 16) LHS External flashing continued
- 17) RHS External Flashing

1 Setting roof out

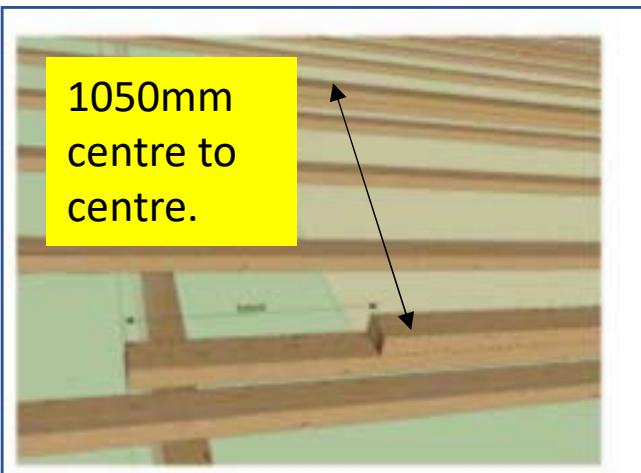


1) Measure size of array

- Panel width; 1802mm
- Panel height 1050mm

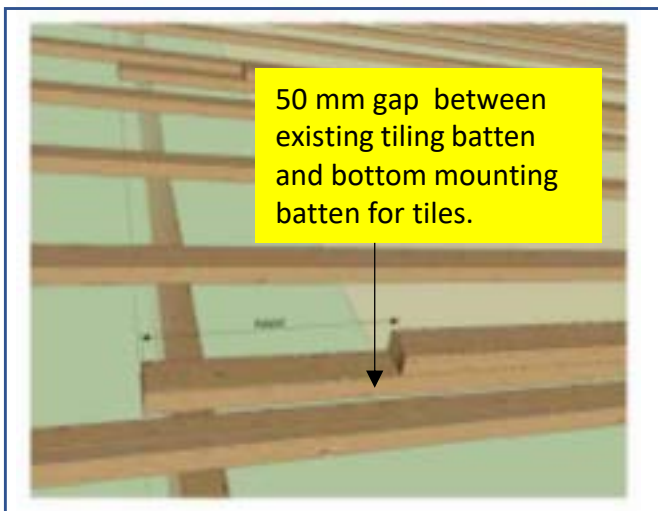
Array size

- **X = (width) = 1802m x nom of panels**
- **Y = (height) 1050mm x number of panels**
- Side flashing = 150 mm
- Top flashing = 300mm
- Bottom flashing = 150mm



2) Fit mounting battens

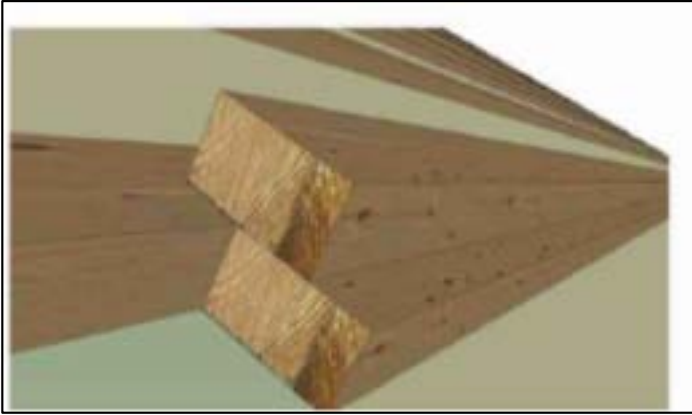
- **Use only 25mm x 50mm battens**
- Measure the height of array from bottom of the array up the roof,
- Fit double mounting battens at **1050mm** metre spacing's. centre to centre
- Secure lower battens with 50mm screws on every rafter



3) 50mm gap between existing & mounting batten

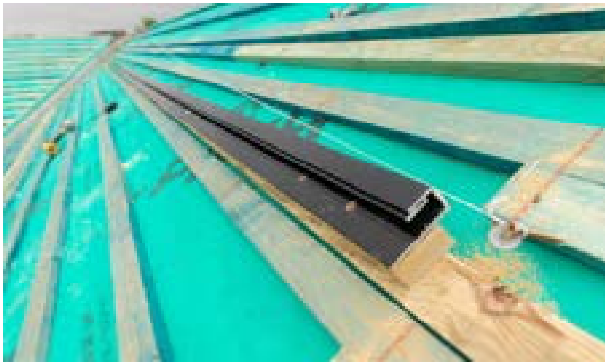
- **For tiles; 50mm gap between lower existing tiling batten and the lowest panel mounting batten to allow space for the tile nib, No gap required for slate.**
- **TIP; Use a 25mm x 50mm batten as a spacer**
- **No gap required for slates**

2) Top mounting profile



5) Spanning existing battens

- Span existing batten mounting battens 1m spacing centre- centre. Fix lower batten with 1x 50mm screw per rafter
- Fix upper batten with 1 x 50mm screw, 1 x 500m approx.



6) Fit Top Mounting profile

- **Very Important!** Fit 1 short end mounting profile per array (30mm shorter than the others)
- Fix top mounting bars straight & parallel
- Set Bottom edge of mounting flush with bottom of top batten
- Secure with 6 screws per profile



7) Cut top mounting batten RHS

- Cut top mounting batten flush with RHS end of mounting profile



8) Cut top mounting batten LHS

- Cut batten flush with the LHS edge of mounting profile

3) Top flashing



9) Additional top flashing support batten

- Fit top flashing batten 270mm approx.
- Hook flashing into mounting groove
- **Fit top flashing flush with LHS edge of mounting profile**
- Secure top flashing with 1 x 25mm screw and neoprene washer in top centre of flashing



10) Fit top flashing joiners

- Attach three strips of Butyl tape to top flashing joiner and stick joiner to top flashing.



11) Top flashing joiner

- Secure top flashing joiner on to top flashing using 2 x 25mm screw and neoprene washers



12) Fit Top flashings and joiners

- Fit top flashings and joiners for full length of array

4) Top Flashing & panel fitting



14) Remove top seal before fitting

- For roofs more than 10 degree pitch
Remove top seal for ease of fitting
- Apply Soapy water to seal to lubricate
and ease fitting



VERY IMPORTANT

15)

When fitting panel fist panel in top LHS
Over shoot top mounting profile
Overshoot by 20mm + past the LHS edge
of the extrusion



VERY IMPORTANT

15b) Over shoot top mounting

- **Overshoot profile by 20mm + past**
the LHS edge of the extrusion
- **Push in tight and square**
-



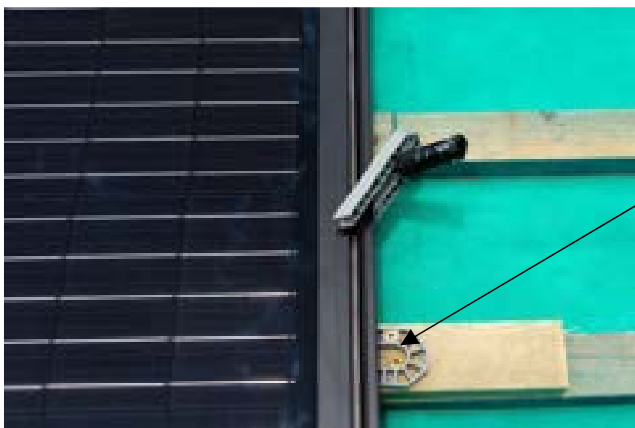
16) Fix panel with 6 screws per panel
Don't let the panel drop or slip down as
it will not be square

5) Fitting top row of panels



17) Secure MC4 lead

- Secure lead temporarily to frame with panel shim to prevent from losing lead behind the panel



18) Fix Mid Panel support

- **Optional**, for area of high snow load. Fix mid panel support shim to small section of addition roofing batten with 50mm screw to existing roof batten as close to centre of panel



19) Connect panels

- Connect panels making sure that the MC4 connectors 'click' when connected. Fire hazard if not connected properly. **ALWAYS USE MC4 CONNECTORS FOR STRING CABLES. Wrongly Matched connectors can cause fires!!!!**



20) Fit addition panels

- Slide RHS panel next to LHS panel - interconnecting side profiles
- Push each panel as far as it will go flush and level with its neighbour
- Secure panels with 6 screws per panel

6) Fitting panels



25) Use soapy water sprayed or applied to top seal to lubricate & aid fitting



26) Fit top row of panels

Make sure they are pushed in tight and square. Beware of wrinkling EPDM tape preventing them being pushed tight



27) Fit additional rows of panels

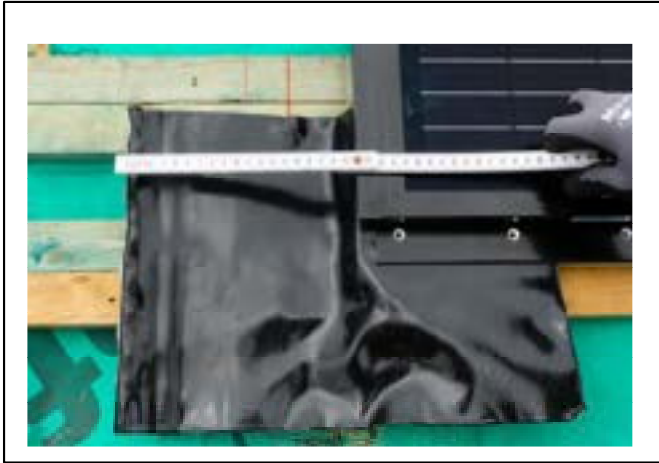
- Fit additional rows of panels pushing tight and level



28) Cut mounting battens

- Cut flush battens flush with LHS and RHS edge of each panel

7) Fitting bottom corners



29) Fit flexible bottom corner flashing

- Fit flexible bottom corner flashing
Allow for 200mm approx. with outside edge turned up to prevent wind blown rain



30) Underlap flexible bottom flashing

- Underlap panel by approx. 150mm



31) Bottom Flashing

- Allow 120mm over lap approx.



32) Secure Bottom panel

- Secure panel with 6 screws

8) LHS Flashing



33) Top LHS corner

- **Optional** Fit Butyl Tape to Top LHS corner flashing



34) Insert LHS corner flashing

- Push Top LHS Flashing **under** the top flashing



35) Fit LHS Flashing

- Fit LHS flashing by inserting into side profile and rotating



36) Fit LHS flashing

- Rotate and slide LHS flashing up into position

8a) LHS Flashing continued



37) Fit additional LHS flashings

- Fit additional flashings and slide into position



38) Fit bottom LHS flashing

- Fit LHS flashing overlapping flexible bottom flashing



39) Secure top corner flashing

- Secure with 25mm screw and neoprene washer



40) Fit flashing clips

- Secure side flashings with flashing clips & 25mm screws

9) RHS panel support



41) Fit additional LHS flashings

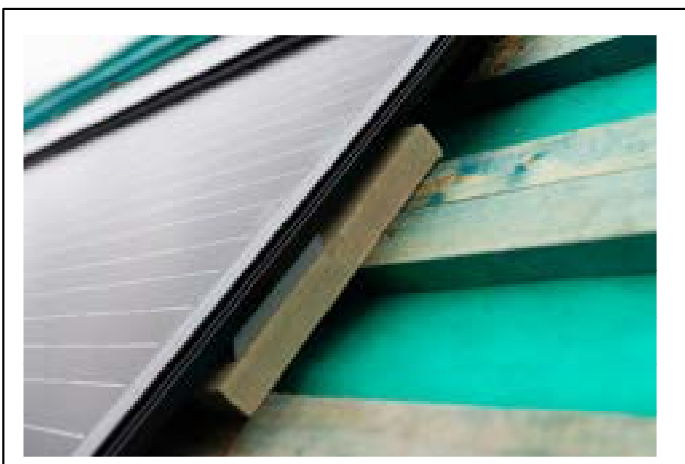
Assemble RHS mid panel support with batten long enough to span two battens



42) Over hang screw over batten in upper / middle part of panel



43) Slide panel support into position Parallel with RHS panel frame



44) Mid panel support supports RHS of pane from snow load

10) RHS Flashing



45) **Optional** Stick strip of butyl tape to top corner



46) Insert top RHS corner flashing

- Slide corner flashing **under** top flashing



47) Fit additional LHS flashings



48) Fit additional LHS flashings

- Fit additional flashings and slide into position

11) Bottom Flashing



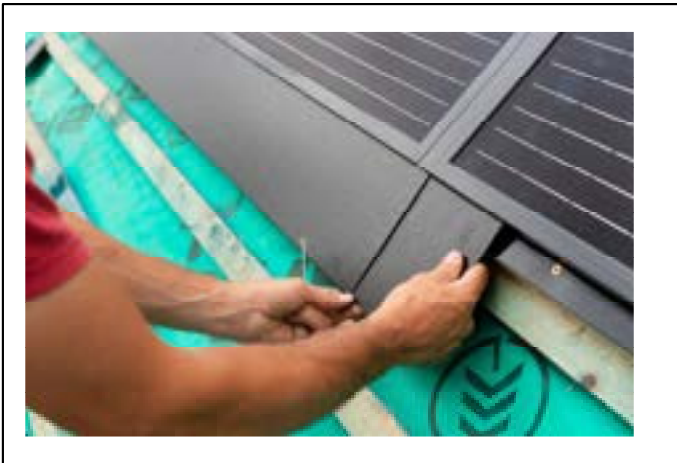
45) Fit bottom flashing hooks

- Fit 2 x flashing hooks per bottom flashing



46) Fit bottom flashing and bottom flashing joiner

- Push bottom joiner into position into bottom flashing



47) Slide Bottom flashing joiner into position



48) Fit next bottom flashing

- Slide in next bottom flashing into position

12 Bottom Flashing Continued



49) Push bottom flashing together



50) Pull flashing hook

- Pull flashing hook over bottom edge of flashing.
- Note; If using tiles, bottom flashings can be lifter and tiles fitted. If using slates bottom flashing will have to be removed to fix slates and refitted.



51) Corner detail

When slating or tiling bottom course fits under bottom flashing and flexible corner. Side slates/ tiles fit over side flashings and flexible corner flashing



52) Completed slate roof

13) Flexible bottom flashing, Lead or lead substitute



1) Flexible bottom flashing

- Fit double battens
- Run lead full length of the array and over shoot bottom of panels by 200mm on LHS & RHS.
- Lead length not to exceed 1500mm, overlap 150mm
- Fix with Stainless steel screws



2) Fitting bottom capping strips

- Apply very small bead of silicone on bottom edge of panel



3) Bottom capping strip

- Push in bottom capping strip and capping and internal capping strip joiners and end caps



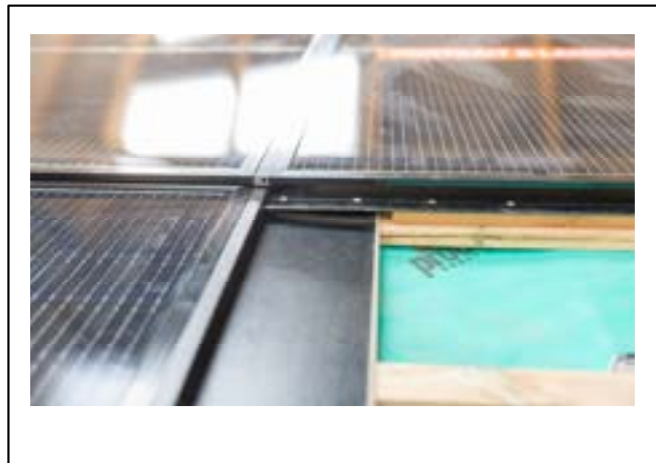
4) Lead or lead substitute bottom flashing detail

- When using profiled Roman tiles Lead or lead substitute can replace metal bottom flashing

14) RHS Internal Flashing New Design



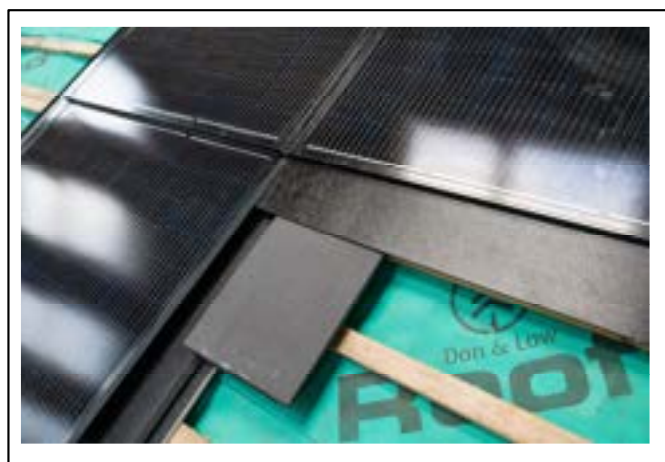
1) Cut 170mm section of top batten out from outside RHS edge of panel.



2) Fit RHS flashing under panel above

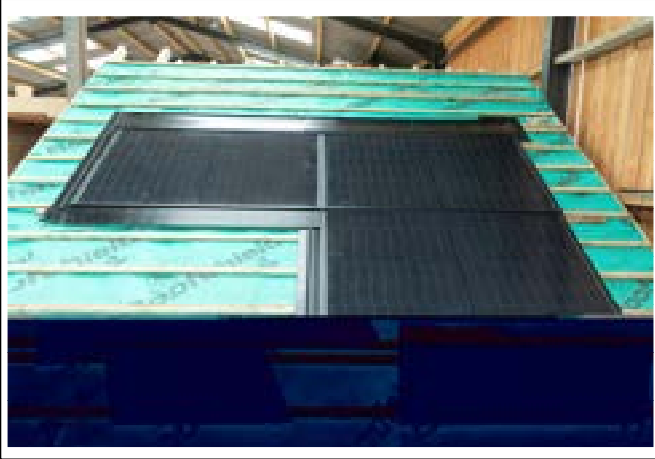


3) Fit 150mm section of expandible phone tape under frame of upper panel

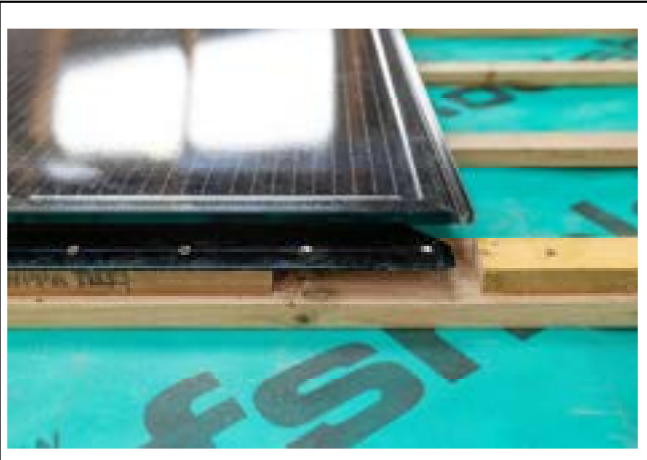


4) Fit Metal Bottom flashing or flexible bottom as standard

15) LHS internal flashing New Design



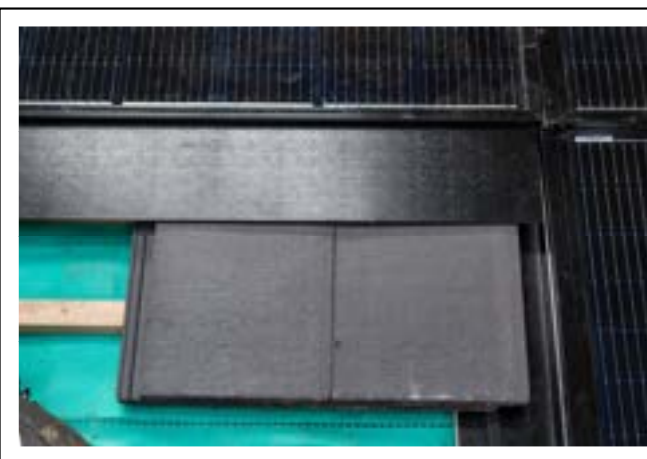
- 1) Internal LHS corner
- 2)



- 2) Cut out 200mm of top batten from RHS outside edge of panel



- 3) Fit additional panels around the corner and fit LHS flashing flashing

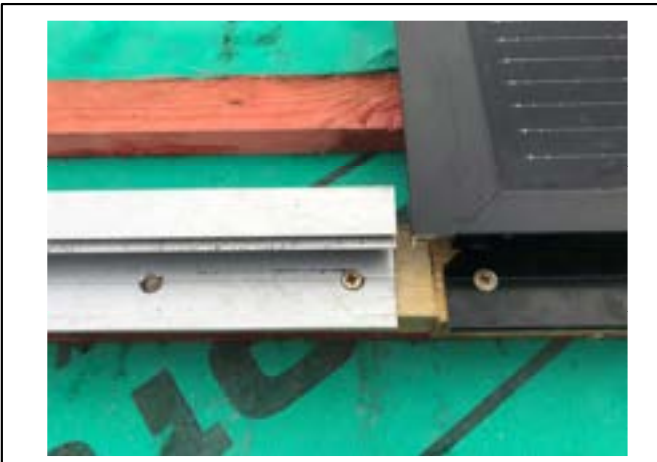


- 4) Fit metal bottom flashing or flexible bottom flashing as standard

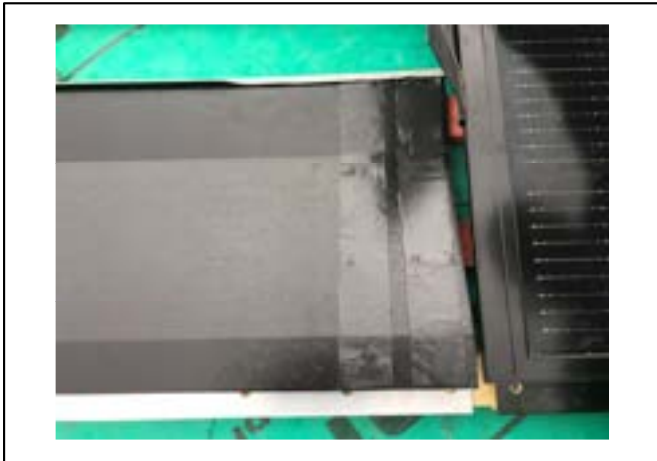
16) LHS External Flashing



- 1) Fit top mounting profile and flashing
 - Fit short mounting profile parallel with bottom profile of panel



- 2) To Fit an external RHS flashing
 - Leave 5-10mm gap to allow RHS external flashing to slide into position between Profile and panel frame



- 3) Fit top flashing
 - Flatten top flashing return
 - Apply 2 strips of Butyl tape



- 4) Slide RHS external flashing into place
 - Secure with flashing clip and neoprene washer & screw

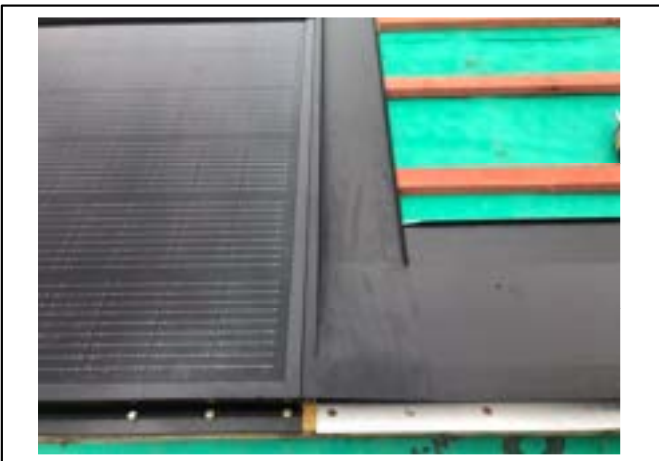
17) RHS External Flashing



- 1) **Fit Mounting profile parallel with bottom profile of panel**
 - **No need to leave a gap between panel and profile**



2. **Fit top flashing**
 - **Flatten 150mm return of top flashing**
 - **Stick two strips of Butyl tape**



3. **Fit LHS side flashing**



- 4) **Secure with Flashing clip, neoprene washer and screw**