

INSTALLATION MANUAL

November 2025

SOLFIT JT 425-435Wp Portrait

For installation instruction videos
visit: solfit.co.uk

For onsite installer & installation
support text:

Ewen - **07775 897980**

Jason - **07400 496403**



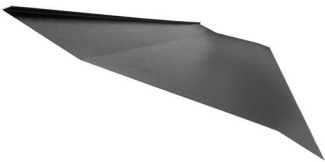
TABLE OF CONTENTS

1	Flashing & Profile Parts
2	Auxiliary Parts
3	Roof Ventilation & Membranes
4	Component Parts Layout
5	Panel Dimensions
6	Dimensions - Fitting Space to Gutter
7	Batten Spacing
8	Setting Roof Out
9	Setting Roof Out Continued
10	Top Mounting Profile
11	Top Flashing
12	Panel Fitting
13	Fitting Top Row of Panels
14	Flexi Bottom Corners
15	Bottom Flashing
16	Metal Bottom Flashing & Joiner
17	Flexible Bottom Flashing
18	Bottom Capping Strips
19	RHS Panel Support
20	RHS Flashing
21	RHS Flashing Continued
22	Mid Panel Support Screw
23	LHS Flashing
24	Top LHS Flashing
25	Flexible Bottom & Lead Flashing & End Caps
26	RHS Internal Flashing Layout
27	Internal RHS Flashing
28	LHS Internal Flashing Layout
29	Internal LHS Flashing
30	LHS External Flashing Layout
31	External LHS Flashing
32	External RHS Flashing Layout
33	External RHS Flashing

COMPONENTS

FLASHING & PROFILE PARTS

Top Flashing 425Wp
1182mm



Top Flashing Joiner



Corner Flashing
Top Left



Corner Flashing
Top Right



Side Flashing Left
425Wp 1828mm



Side Flashing Right
425Wp 1828mm



External Flashing
Left 425Wp
1828mm



External Flashing
Right 425Wp
1828mm



Bottom Flashing
425Wp 1182mm



Bottom Flashing
Joiner



Bottom Capping
Strip 425Wp
1182mm



Bottom Capping
Strip Joiner



Bottom Capping
Strip End Caps



Lead ZeroFlashing
x 5m



Flexi Bottom Corner
Flashings x 500mm



COMPONENTS

AUXILLARY PARTS

Top Mounting Profile Landscape
1152mm



Top Mounting Profile Landscape
1182mm



Butyl Tape
x 10m



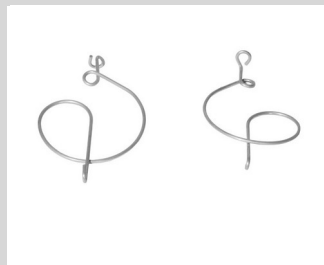
Expanding Foam Tape
x 5.5m



Side Flashing Clip



Bottom Flashing Hooks
x 10



10mm Mid Panel Support
x 250



Plumbers Lubricant x
500mm



25mm EEJOT SS
Torq Screws



Torq Driver Head



115mm Hex Head
Neoprene Screw



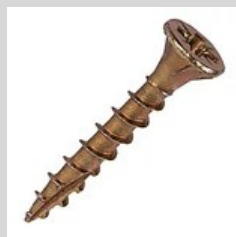
8mm Head Driver Bit



50mm x 5 Screws
x 200



25 Screws
x 200



CT 1
250ml



80mm Neoprene
Tec screw



ROOF VENTILATION

AND MEMBRANES

New guidance has been brought in by the NFRC (National Federation for Roofing Contractors) (GN 64) which recommends when fitting in roof solar adequate allowance is made for the eaves and ridge ventilation and the use of high resistance non-permeable roofing membranes or underlays to allow the movement of moisture from under the panels.

Roofs can be counter battened and / or fitted with a vented ridge and a vented eaves to allow air flow.

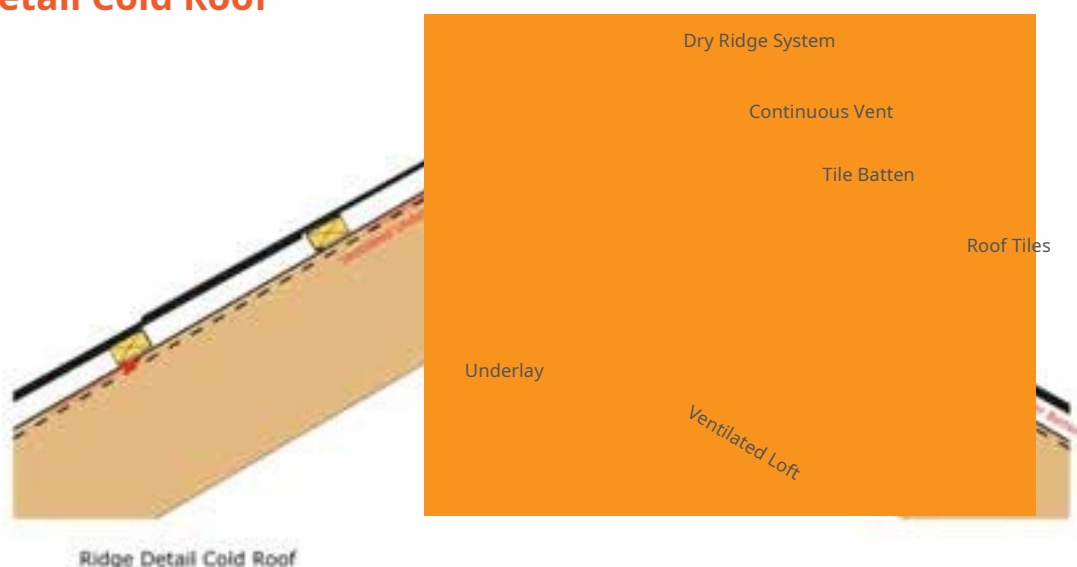
It is recommended that high resistant non-permeable membranes are fitted under the array to prevent moisture penetration in the form of condensation building up under the panels.

All roofs should have a vented ridge and a vented soffit wherever possible to allow.

Where mortared ridges are fitted, ventilated slates and tiles should be fitted to allow moist air & condensation to escape.

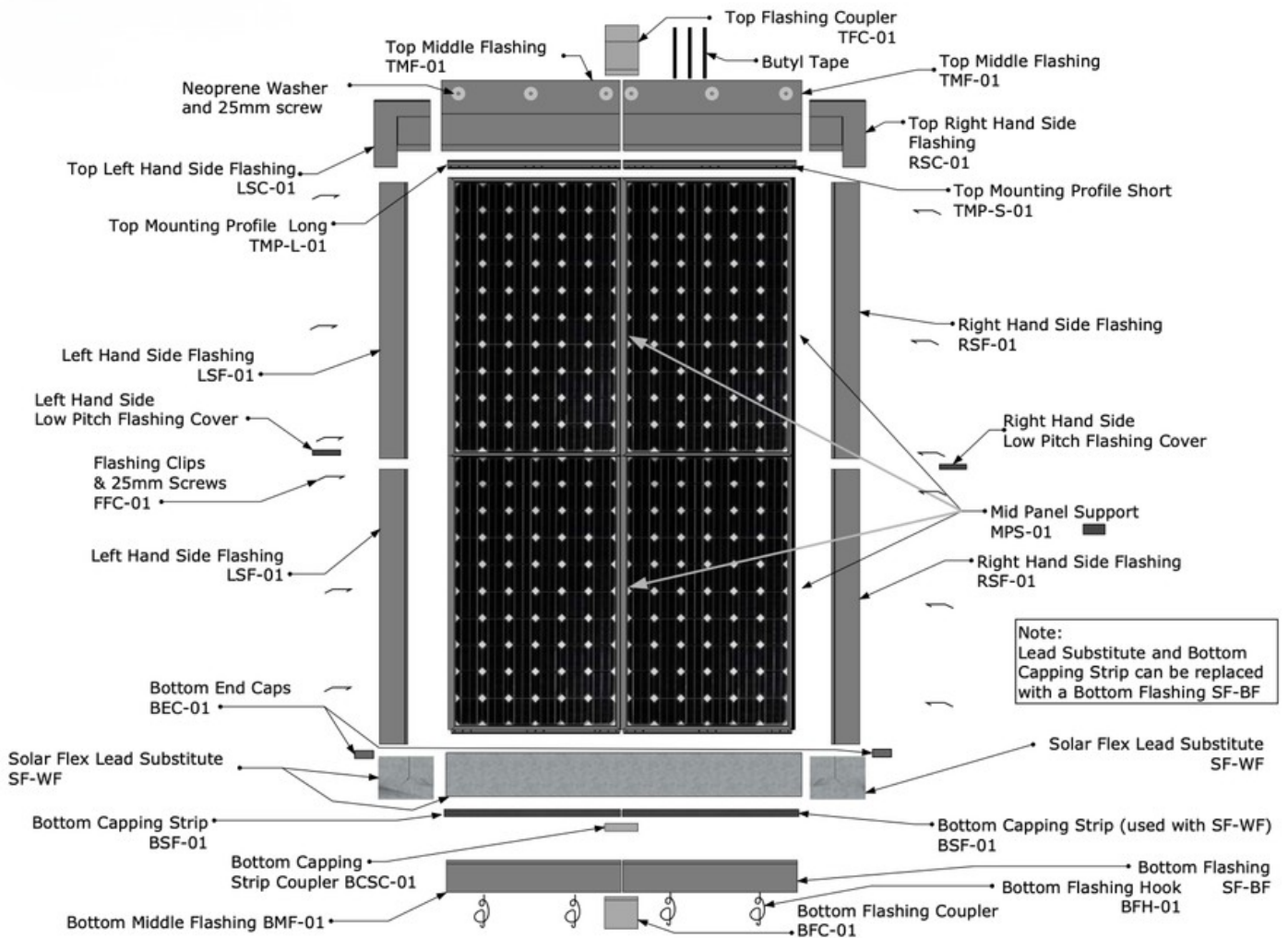
More information can be found at:
<https://solfit.co.uk/brochures-datasheets>

Ridge Detail Cold Roof



COMPONENT PARTS

LAYOUT



Note:
Corrugated Black Lead or Lead Substitute & Bottom Capping Strip can be replaced with Bottom Flashing SF-BF

Important!

Low pitch flashing <math><20^\circ</math>

Please note: All standard flashing are for roof pitches down to 20 degrees. For roof pitches less than 20 degrees, Low Profile Top Flashings are required. Please make special order for low pitch flashings.

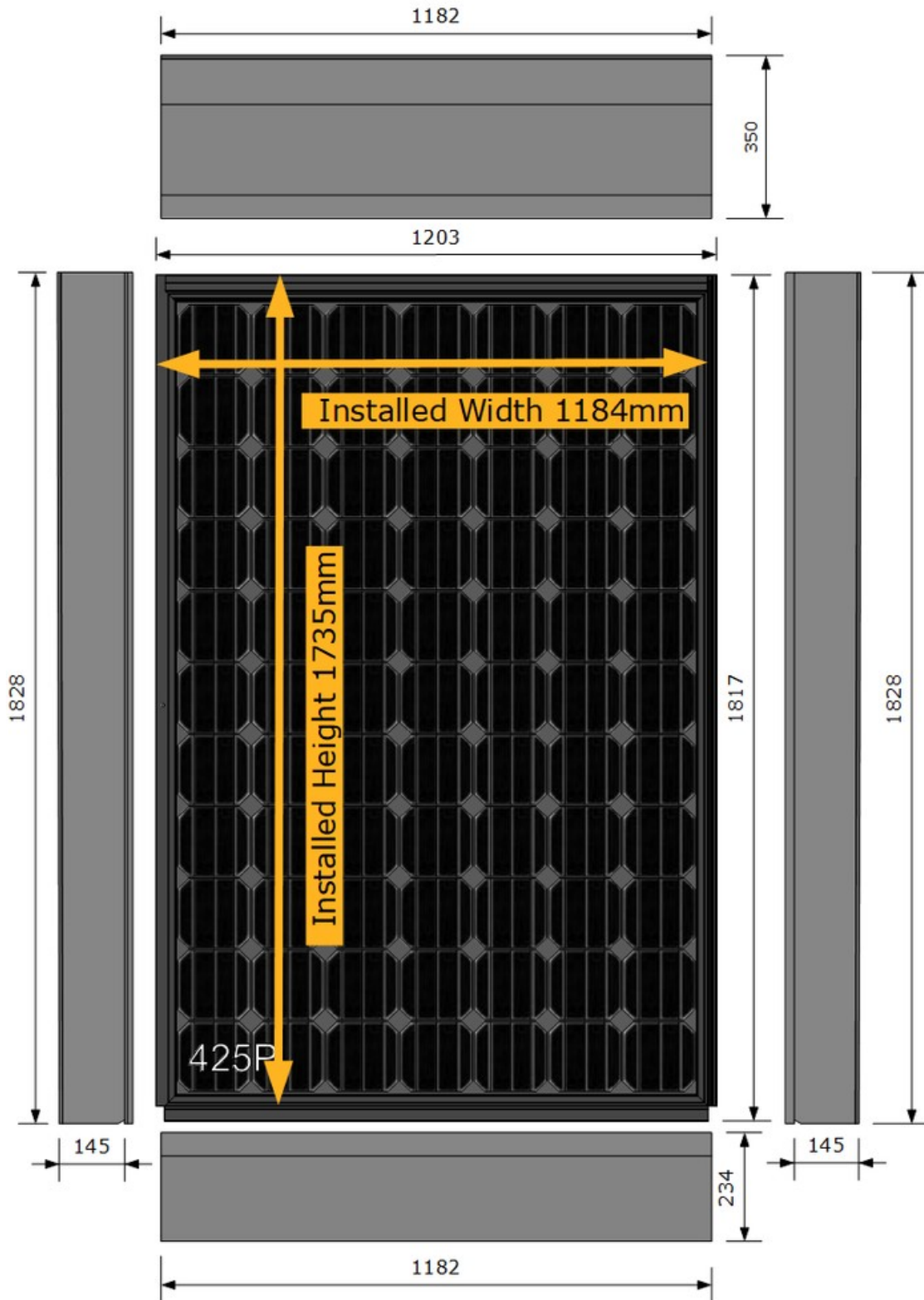
Important!

MC4 Cable Connectors

Important when fitting MC4 Cable Connectors, only ever use Staubli MC4 connectors. Mismatched MC4 connectors can cause fires!

DIMENSIONS

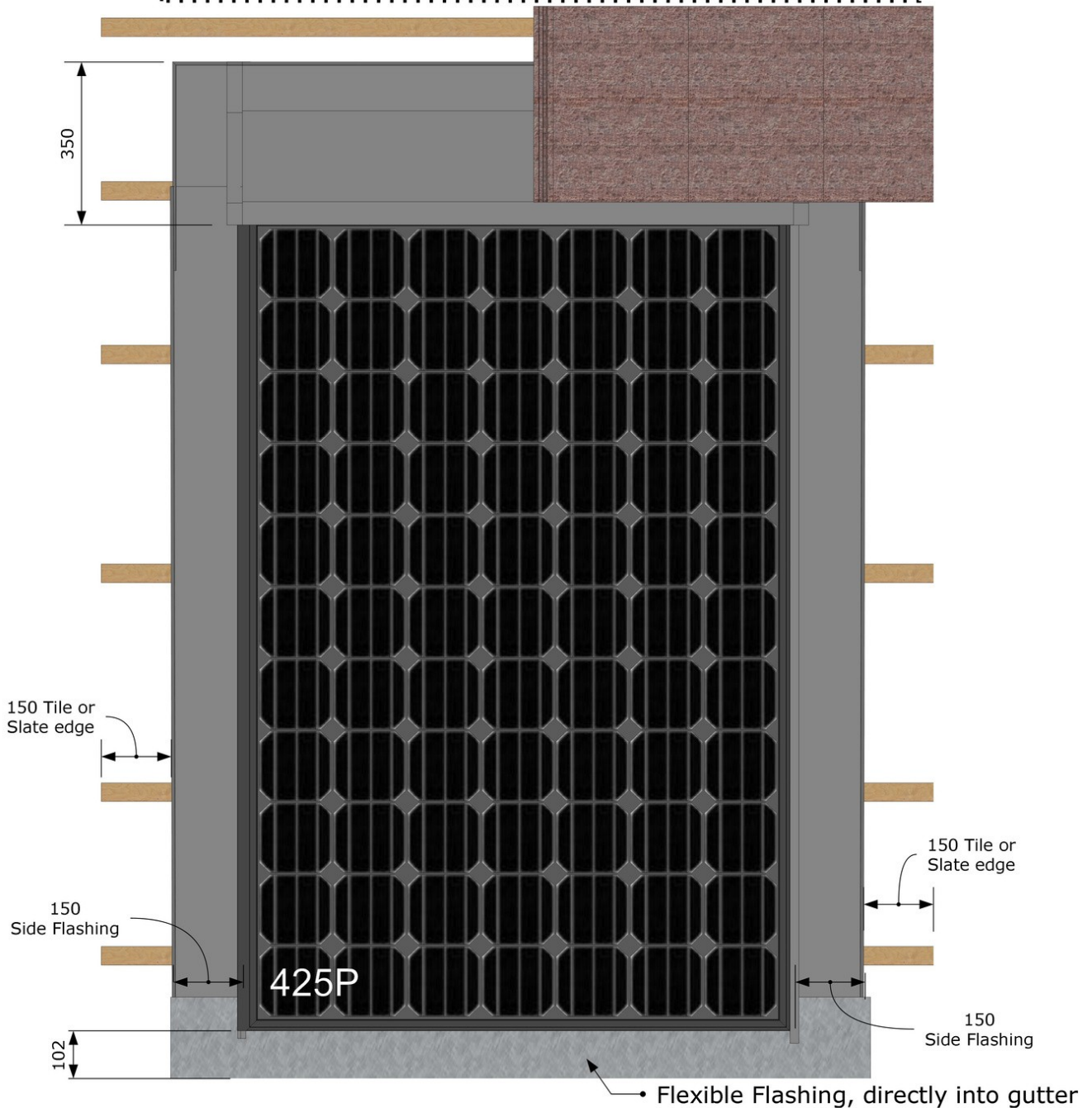
PANEL AND MINIMUM BORDER



DIMENSIONS

FITTING SPACE TO GUTTER

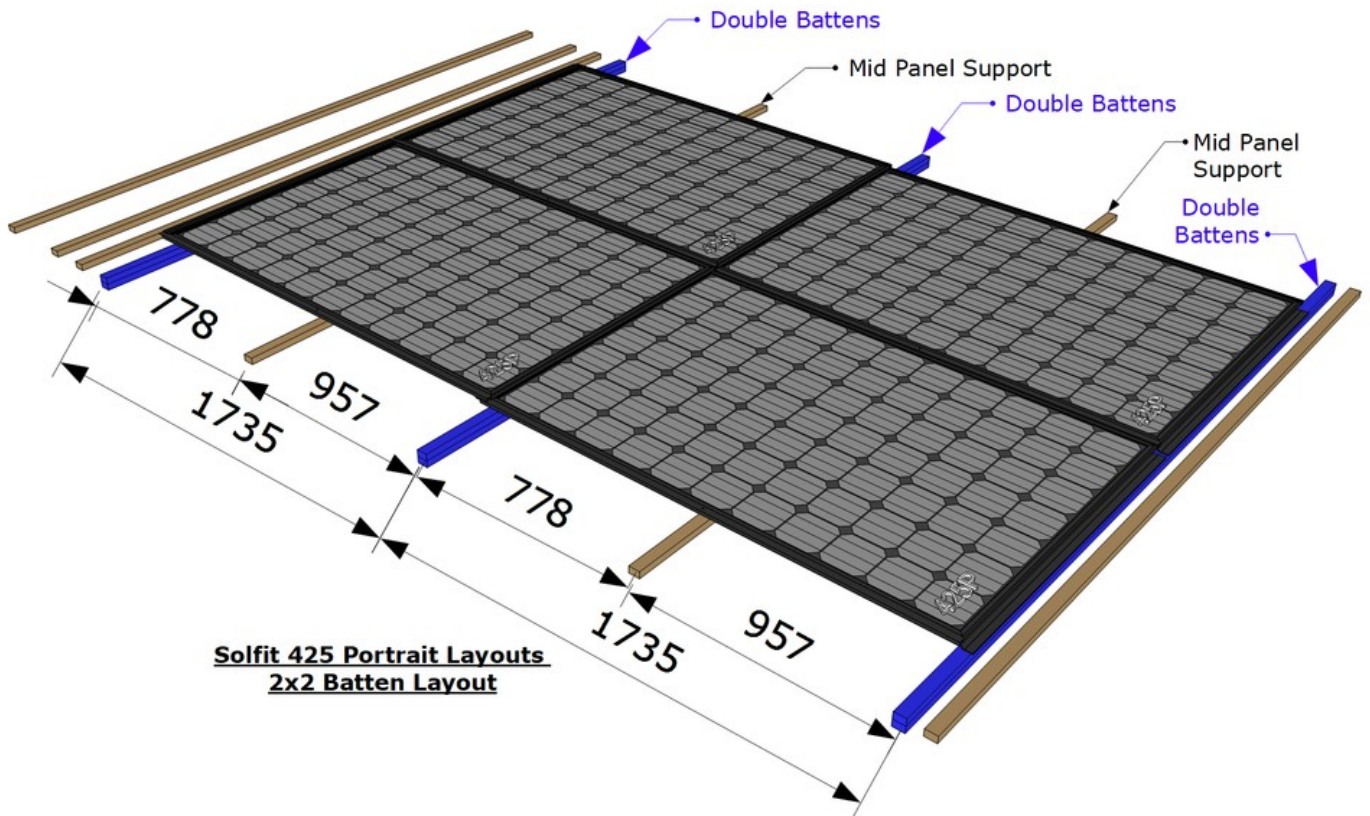
350mm clear and one top tile batten for a row of "Toppers"
 Alternatively it can go under the ridge so long it is a dry ridge



Bottom of panel directly into gutter via flexible flashing.
 Preferred Option: Row of tiles or slates under flashing, see separate detail

Solfit 425Wp Portrait Layouts - Fitting Space to Gutter

2X2 BATTEN LAYOUT



SETTING ROOF OUT

Y Array height = 1735mm x nom of panels



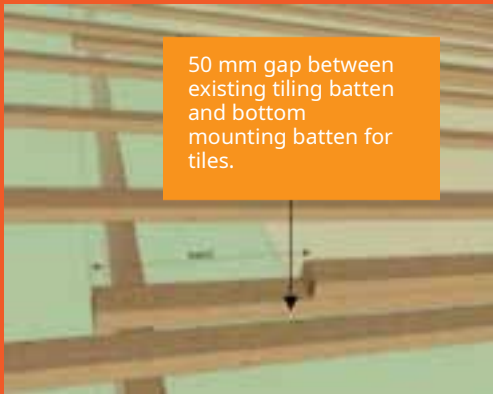
X Array width = 1185mm x nom of panels

- Installed panel width: 1185mm
- Installed panel height: 1733mm

Array size

- X =(width) = 1185m x number of panels
- Y = (height) 1733mm x number of panels
- Side flashing = 150mm
- Top flashing = 350mm
- Bottom flashing = 150mm

50 mm gap between existing tiling batten and bottom mounting batten for tiles.



- For tiles: 50mm gap between lower existing tiling batten and the lowest panel mounting batten to allow space for the tile nib. No gap required for slate.
- TIP: Use a 25mm x 50mm batten as a spacer.

1735mm
centre to
centre.



- Measure the height of array from bottom of the array up the roof.
- Fit double mounting battens at spacings, centre to centre.
- Secure lower battens with 50mm screws on every rafter.



- Span existing batten mounting battens 1733mm spacing centre to centre. Fix lower batten with 1 x 50mm screw per rafter.
- Fix upper batten with 1 x 50mm screw, 4 x 50mm screw approx.

TOP MOUNTING PROFILE



1: Fit Top Mounting profile

- **Very Important!** Fit 1 short end mounting profile per array (30mm shorter than the others).
- Fix top mounting bars straight & parallel.
- Set bottom edge of mounting profile flush with the bottom of top batten.
- Secure with 4 screws per profile.

VERY IMPORTANT



2: Fit top profiles. Straight and true

- 1 x short profiler per row, 30mm shorter than longs profiles.
- Use string line to keep straight if required.
- Fix with 6 screws per profile.



3: Fix each mounting profile with 6 screws



4: Cut top batten LHS & RHS of mounting profile

- Cut batten flush with the LHS edge of mounting profile.
- Set bottom edge of mounting profile flush with the bottom of top batten.

TOP FLASHING



1: Additional top flashing support batten

- Fit top flashing batten 335mm approx.
- Hook flashing into mounting groove of top profile.
- Fit top flashing 10mm approx past LHS edge of mounting profile.
- Secure top flashing with 1 x 25mm neoprene torq screw in the top centre of the flashing.



2: Fit top flashing joiners

- Attach 2 x strips of Butyl tape to top the flashing joiner and stick joiner to top flashing.
- Don't forget to take off tape.



3: Top flashing joiner

- Secure top flashing joiner onto the top flashing using 2 x 25mm neoprene screw. In event of not having a torq driver head, 25mm screw and neoprene washers can be used.



4: Fit top flashings and joiners

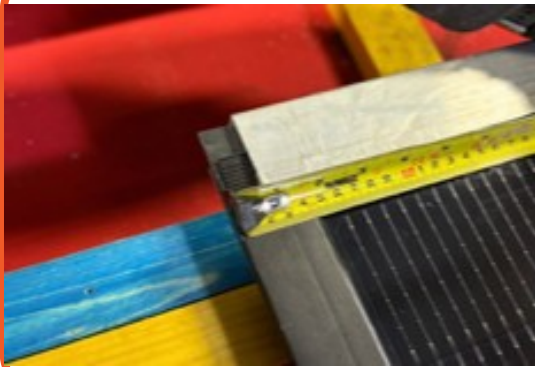
- Fit top flashings and joiners for full length of array.
- Secure with 2 x 25mm stainless neoprene torq screws or 2 x 25mm wood screws screws and neoprene washers as an alternative.

PANEL FITTING



1: Lubricate top row panels seal

- When fitting top panel we recommend the use of a water-based plumbers lubricant to assist in the fitting of top panels into top mounting profiles.
- Brush or smear on with a rag to assist in fitting.



2: Fitting first panel fist panel in top LHS

- Overshoot top mounting profile by 20- 25mm + past the LHS edge of the top profile as it allows the LHS flashing to be fitted.

VERY IMPORTANT



3: Over shoot top mounting

- Overshoot profile by 20mm + past the LHS edge of the extrusion.
- Overshoot top flashing 10mm past top profile.

VERY IMPORTANT



4: Right Hand

- Panel will overshoot top profile approx 20mm +.
- Push panels tight into top profile.

FITTING TOP ROW OF PANELS



1: Fix Each Panel

- Fix each panel with 4 x 50mm x 5-gauge screws.
- Panel should be parallel with bottom of double mounting batten +/- 5mm.



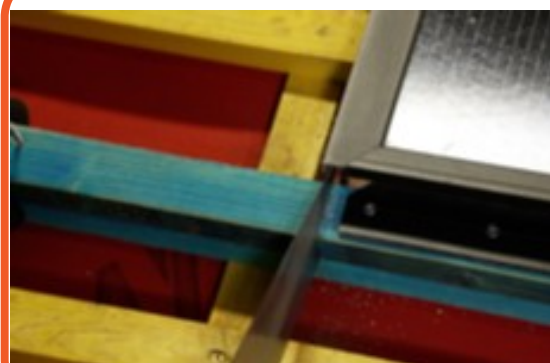
2: Fix Mid Panel support

- Fix mid panel support shim to 150mm section of addition roofing baton with 50mm screw to existing roof batten, in line with mid frame screw hole.
- Provides snow loading support.
- Use shim to hold MC4 in position.



3: Connect panels

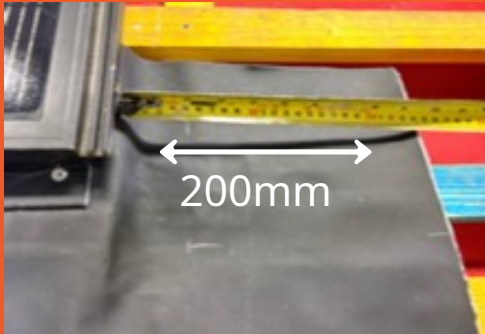
- Connect panels making sure that the MC4 connectors 'click' when connected. Fire hazard if not connected properly.
- **ALWAYS USE Staubli MC4 CONNECTORS FOR STRING CABLES. Wrongly matched connectors can cause fires!**



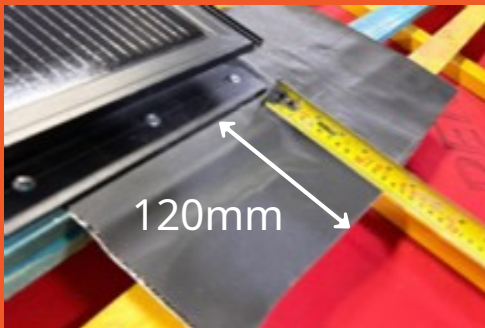
4: Cut battens

- Cut off top mounting battens on LHS and RHS flashing with panels to allow flashings to be fitted.

FLEXI BOTTOM CORNERS



- Underlap RHS of panel with 200mm flexi bottom flashing over shooting 200mm.



- Leave between 120mm – 150mm over tile / slate overlap.



- Fit 2 x 100mm x 10mm shims with 25mm screws.



- Fit 2 x 100mm x 10mm shims with 25mm screws.

BOTTOM FLASHING



1: Fit bottom flashing hooks

- Fit 2 x flashing hooks per bottom flashing approx 300mm from each panel end.
- Note: These are Solfit flashing hooks, not hall hooks for slates.



2: Solfit bottom flashing hooks

- For metal bottom flashing.



3: Screw bottom flashing hooks

- Screw bottom flashing hooks to top batten.
- Make sure screw hole faces down and hook faces up.



4: Bottom flashing hooks in place for metal bottom flashing

METAL BOTTOM FLASHING & JOINER



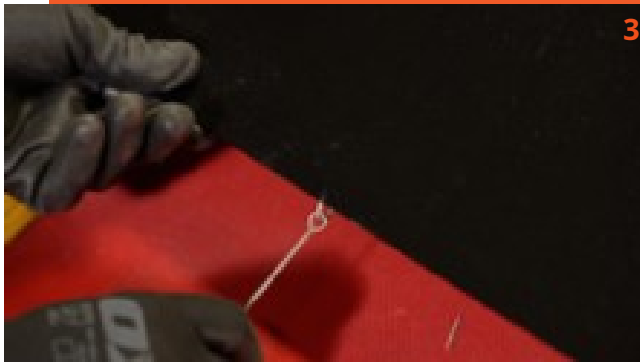
1: Metal bottom flashing & joiner

- Push LHS metal bottom flashing tight to LHS of panel.
- Slide in flashing joiner ' into RHS edge of bottom flashing.



2: Metal bottom flashing & joiner

- Push RHS bottom flashing into position.
- With the bottom flashing joiner spanning LHS and RHS bottom flashing by 150mm.



3: Bottom flashing hook

- With flashing hook or pliers, pull flashing hook over bottom edge of bottom flashing.



4: Pull flashing hook

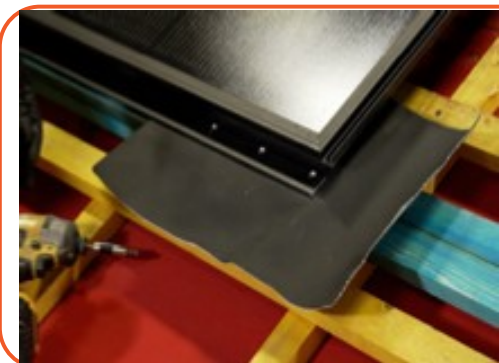
- Pull flashing hook into place with tool or pliers.

FLEXIBLE BOTTOM FLASHING

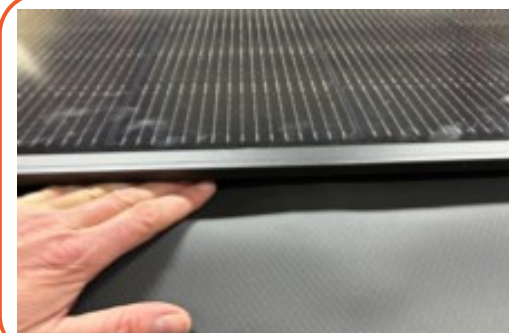
LEAD OR SUBSTITUE



1: Run lead zero, our preferred flexible bottom flashing, the full length of the array over shooting by 200mm either side of array



2: Flexible or metal bottom flashing require flexible bottom corners



3: Fit flexible bottom flashing into bottom profile C section

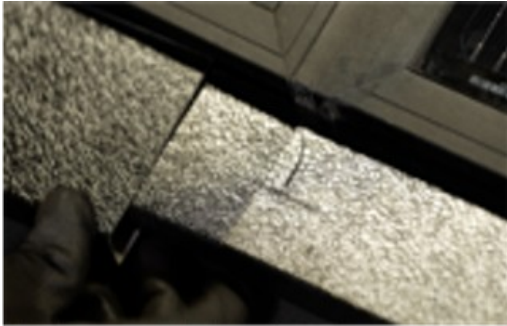


4: Capping strip

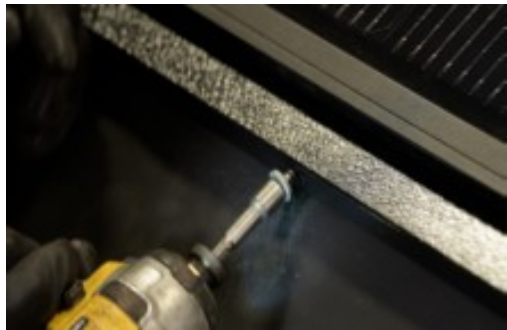
- Push capping strip into position.

BOTTOM CAPPING STIPS

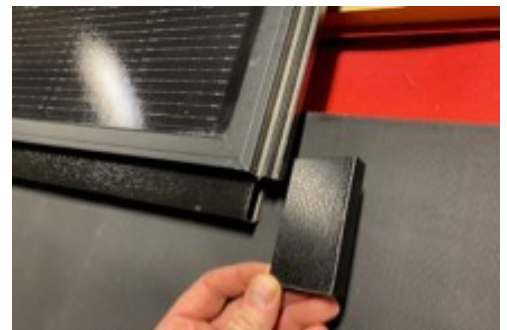
AND END CAPS



1: Fit bottom internal bottom cap strip joiner



2: Screw 1x 115 mm hex head screw through lower face of bottom capping strip into back of C section of panel profile



3: Fit end caps on LHS & RHS



4: Capping strip end caps

- Push capping strip into position.

RHS PANEL SUPPORT

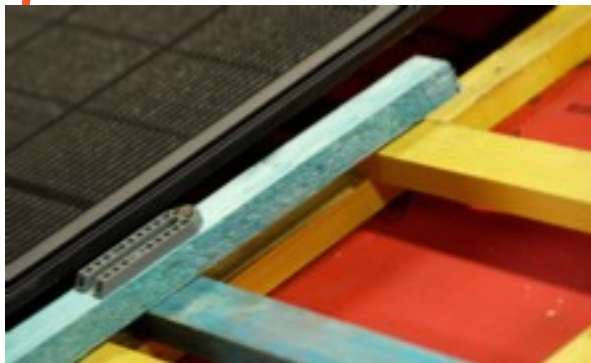


1: Fit additional LHS flashings

- Assemble RHS mid panel support with batten long enough to span two battens.
- 1 x shim.
- 1 x 50m screw for hanging support.
- 1 x 50mm screw for securing shim.



2: Over hang screw over batten in upper / middle part of panel to support panel



3: Slide panel support into position

- Hook with 50mm screw.
- Fit parallel under RHS panel frame.



4: Slide panel support into position

- Fit parallel and under RHS panel frame.

RHS FLASHING



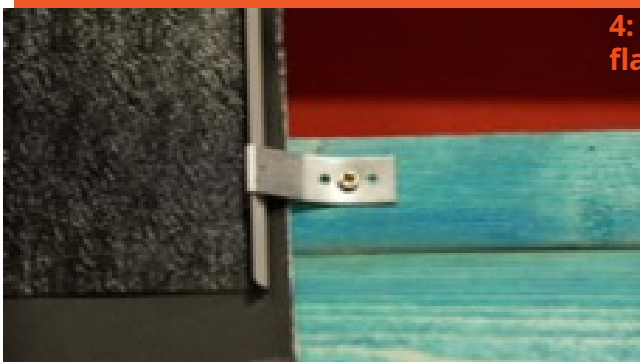
1: Slide RHS side flashing in from the bottom



2: Push RHS flashing flush with the bottom of the panel



3: RHS Push flashing past top edge of the panel



4: Secure side flashing with 3 clips per side flashing

RHS FLASHING



1: Stick strip of butyl tape to top corner flashing approx 100mm from RHS edge



2: Insert top RHS corner flashing

- Slide corner flashing under top flashing.



3: Secure top corner flashing with torq screw or 25mm screw and neoprene washer

- Fit additional flashings and slide into position fix with 25mm torq screw.



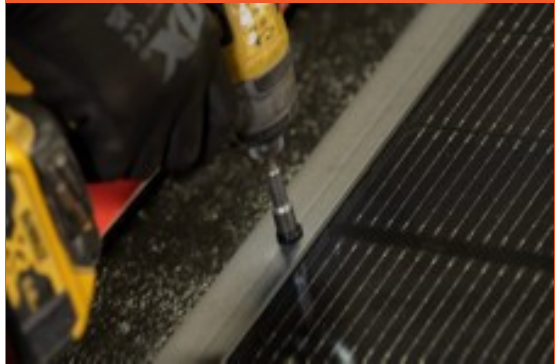
4: Secure top corner flashing with flashing side clip

MID PANEL SUPPORTING SCREW



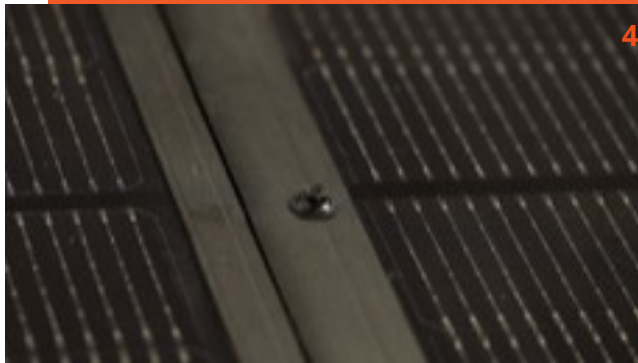
1: Mid Panel

- Fit 200- 300mm batten 'noggin' with 10mm spacer screw approx 40mm from outset edge to prevent contact with mid panel support screw.



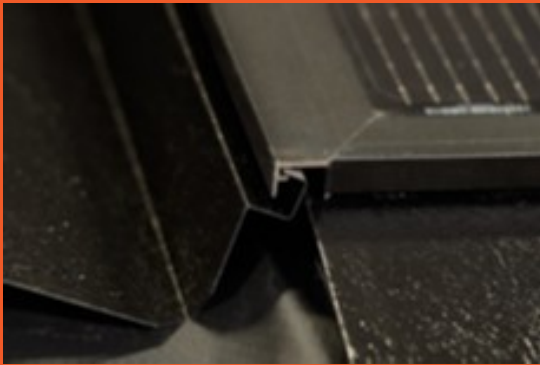
2: Mid panel support screw

- Fix 80mm black neoprene washer screw with 8mm hex head drill bit.
- Screw tight to seal hole.

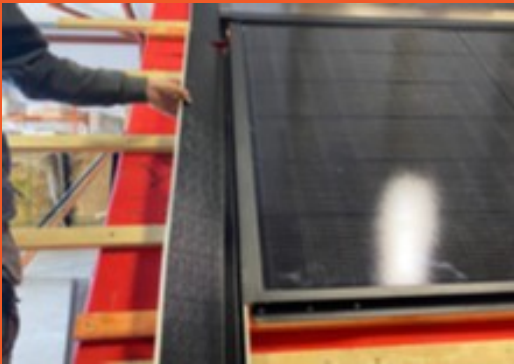
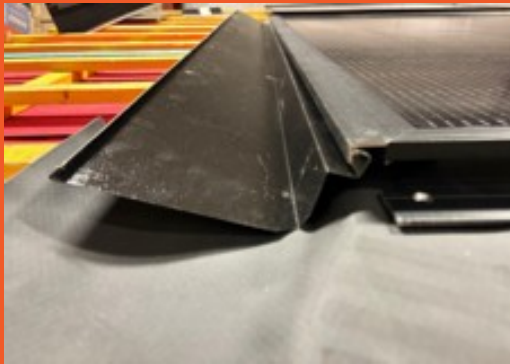


4: Mid panel screw

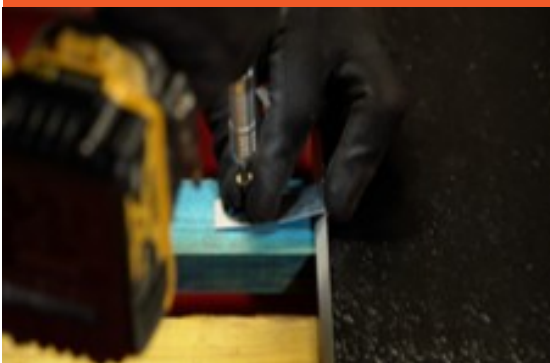
LHS FLASHING



- Position and rotate LHS flashing interconnecting with panel and pushing tight into panel.



- Secure with flashing 3 x clips per side flashing.



TOP LHS FLASHING



- Push Top LHS Flashing under the top flashing and secure with neoprene screw.



- Secure corner flashing with 25mm neoprene torq screw or 25mm screw & neoprene washer.

FLEXI BOTTOM & LEAD FLASHING

AND END CAPS



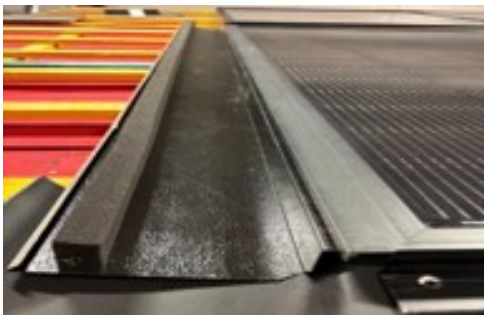
1: Fit flexi bottom flashing, lift flexi bottom flashing and peel off back exposing sticky back

- Try to fix to a dry dust free tile or slate surface.



2: A bead of CT1 or similar to affix flexible bottom flashing to slates or tiles is recommended to prevent flashing up lift does not properly adhere to roof

- Also recommended on Lead Zero overlaps.

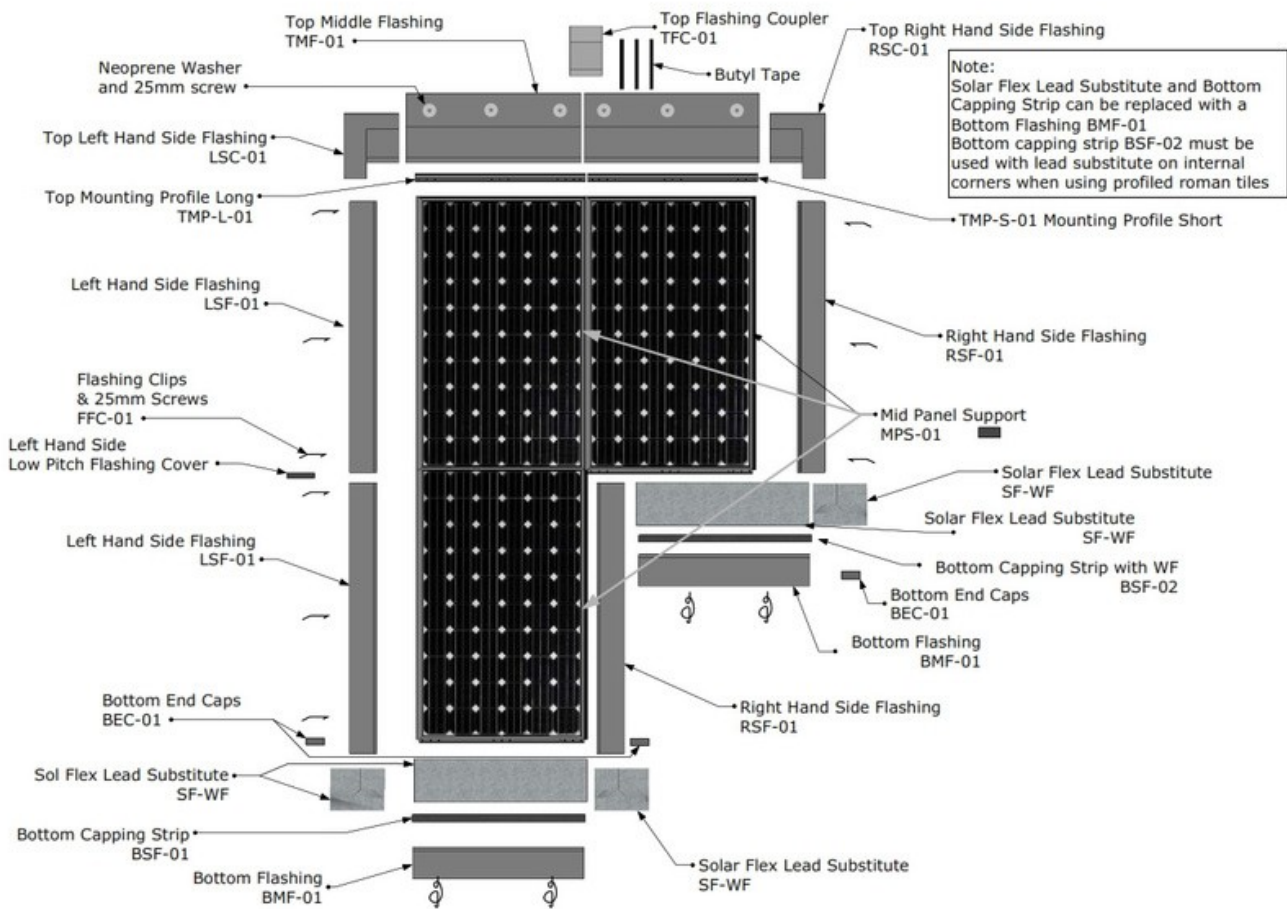


3: Expandible foam tape

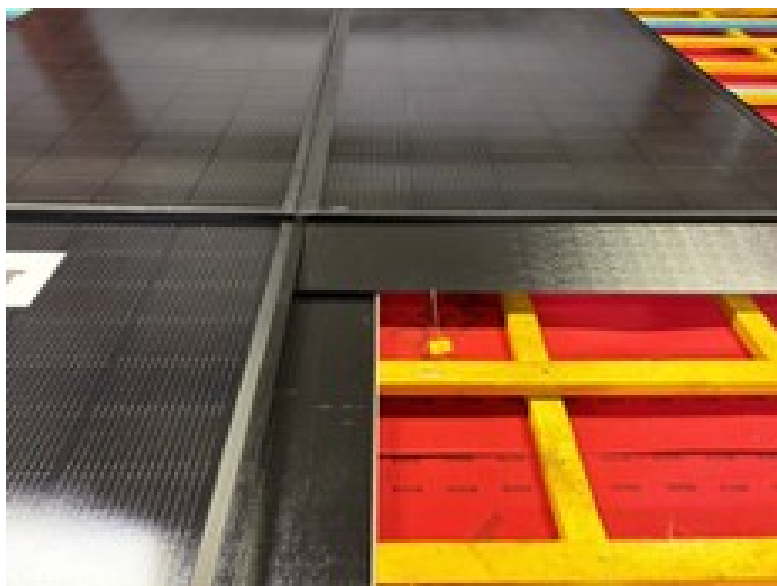
- With tiles, expandable foam tape to be run around the array flashing to prevent wind-blown rain, water ingress.

RHS INTERNAL FLASHING

LAYOUT



Note: Solar Flex Lead Substitute and Bottom Capping Strip can be replaced with a Bottom Flashing BMF-01. Bottom Capping Strip BSF-02 must be used with lead substitute on internal corners when using profiled roman tiles.



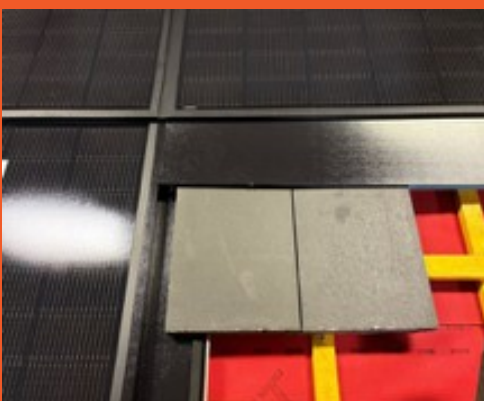
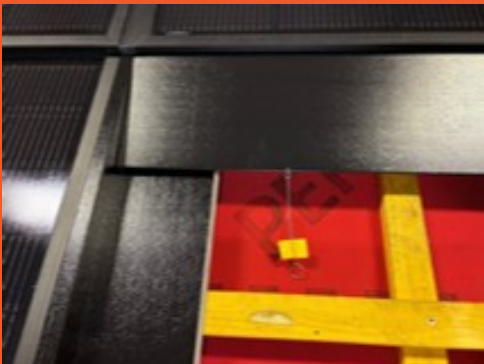
INTERNAL RHS FLASHING



1: Cut 170mm section of top batten out from outside RHS edge of panel

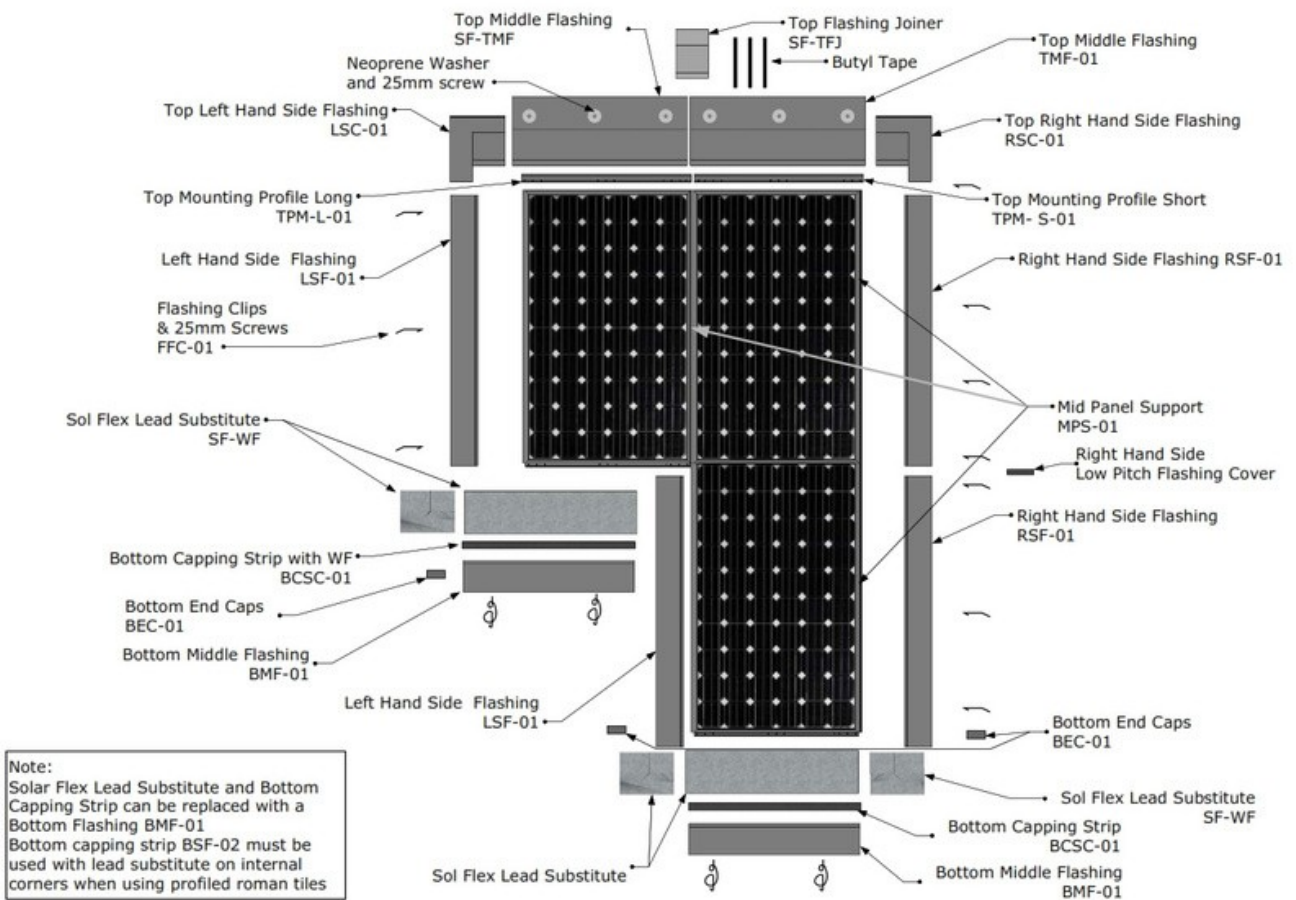


2: Fit RHS flashing under panel above



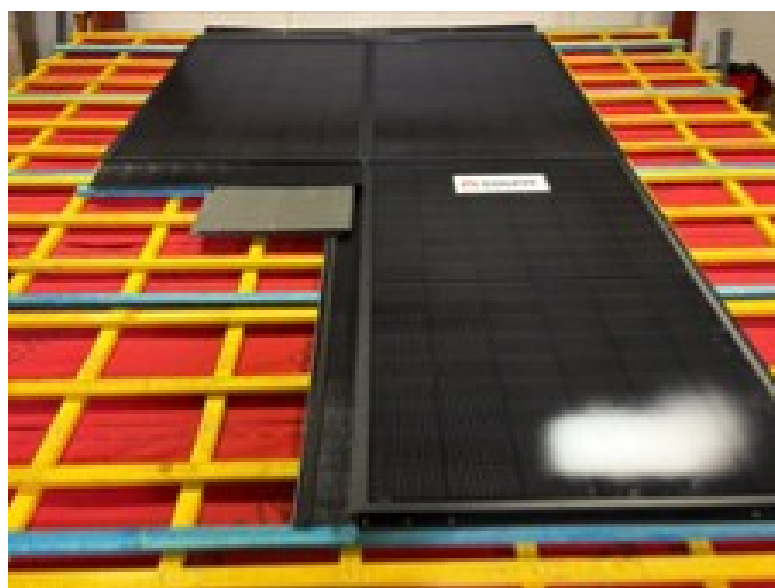
LHS INTERNAL FLASHING

LAYOUT

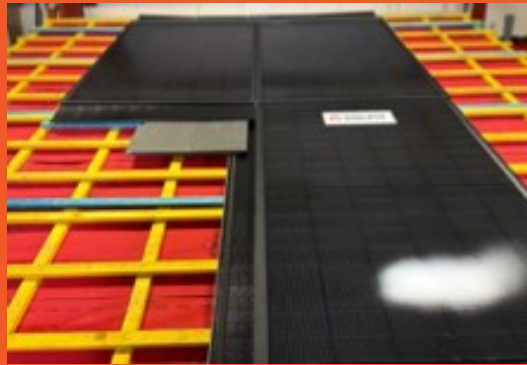
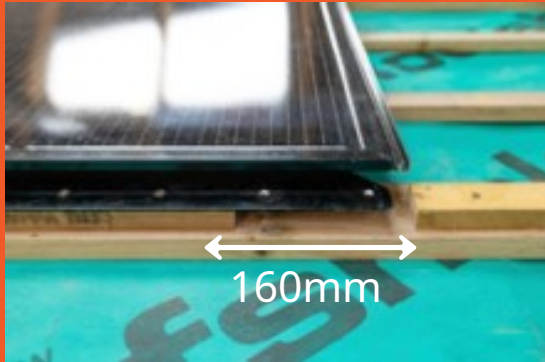


Note:

Solar Flex Lead Substitute and Bottom Capping Strip can be replaced with a Bottom Flashing BMF-01
 Bottom Capping Strip BSF-02 must be used with lead substitute on internal corners when using profiled roman tiles.



INTERNAL LHS FLASHING



2: Fit an external RHS flashing

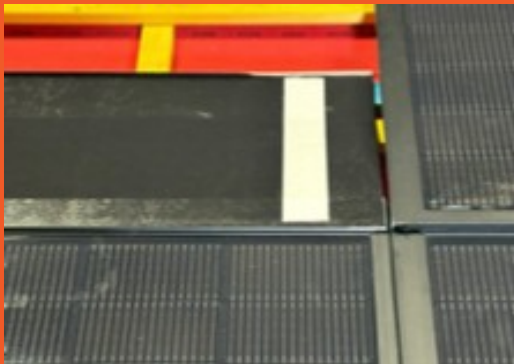
- Leave 5-10mm gap to allow RHS external flashing to slide into position between profile and panel frame.

EXTERNAL LHS FLASHING



1) Fit top mounting profile and flashing

- Fit short mounting profile parallel with bottom profile of panel.



- Leave 5-10mm gap to allow RHS external flashing to slide into position between profile and panel frame.



3: Fit top flashing

- Flatten top flashing return.
- Apply strips of butyl tape.

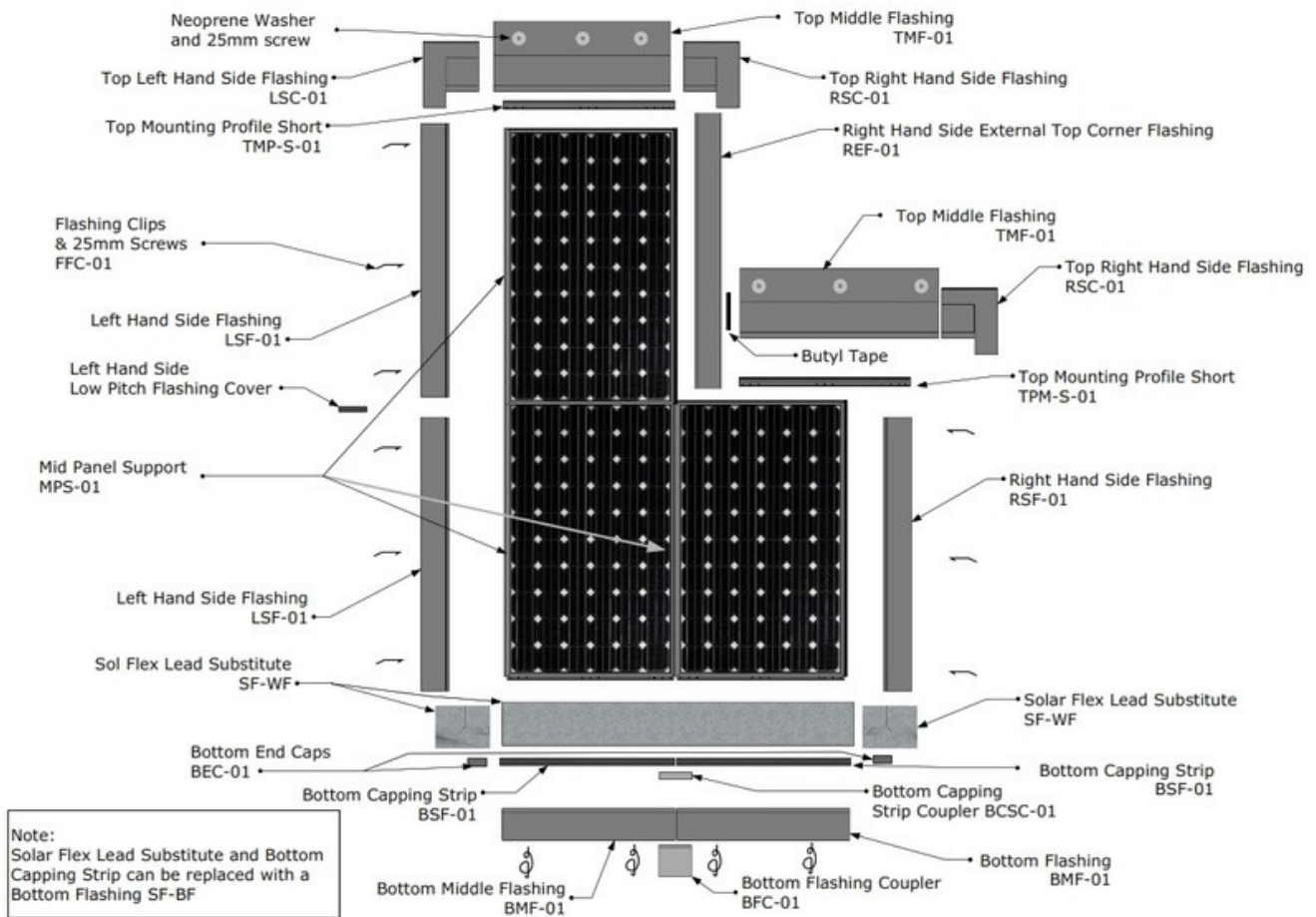


4: Slide RHS external flashing into place

- Secure with flashing clip.

EXTERNAL RHS FLASHING

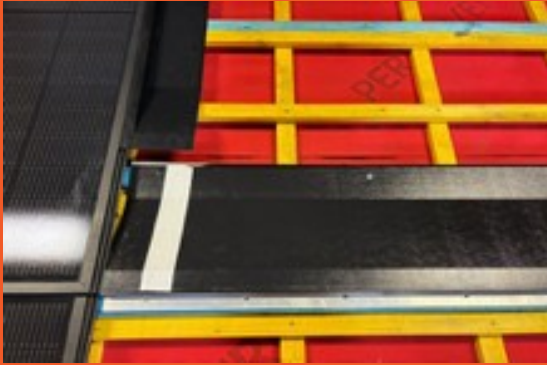
LAYOUT



Note:

Solar Flex Lead Substitute and Bottom Capping Strip can be replaced with a Bottom Flashing SF-BF

EXTERNAL RHS FLASHING



1: Fit mounting profile parallel with bottom profile of panel

- No need to leave a gap between panel and profile.



2: Fit top flashing and side flashing

- Flatten 150mm return of top flashing and stick two strips of butyl tape.
- Secure with side flashing clip.-

