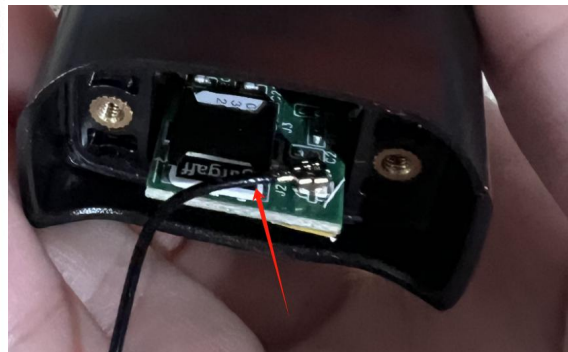
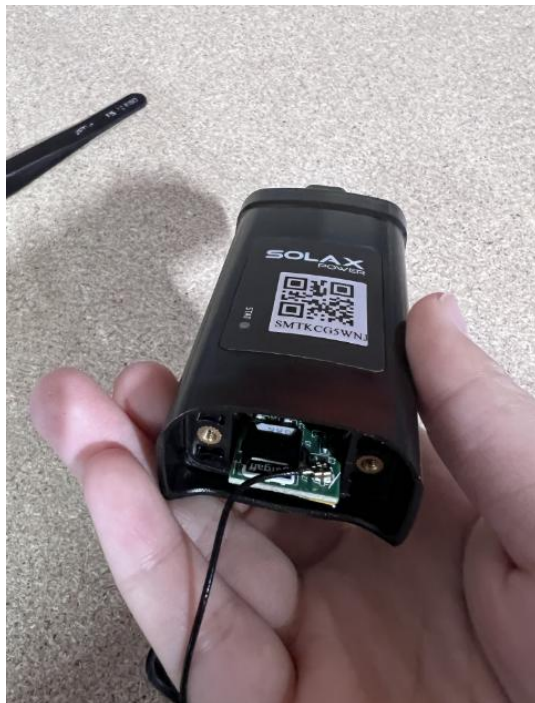


1. Insert the Data card into your mob to get the below APN info what will be used in following step:



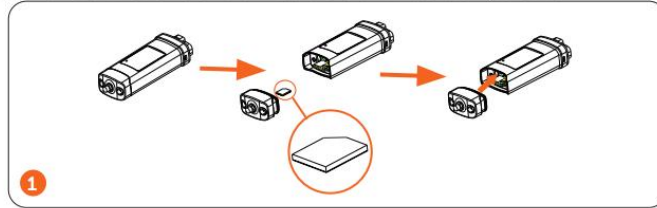
2. Insert the Data Card



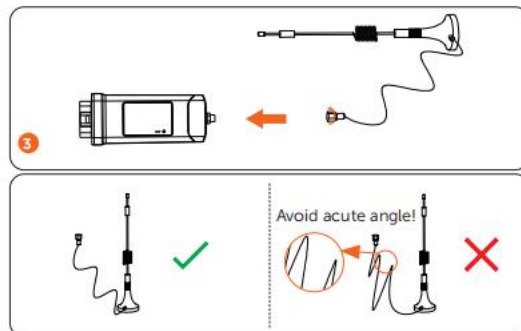
3. Plug the dongle at the bottom of inverter “ Upgrade / Dongle” port, there is antenna in the dongle box, please remember to use the antenna as needs it to get stronger signal

- 4G Mode

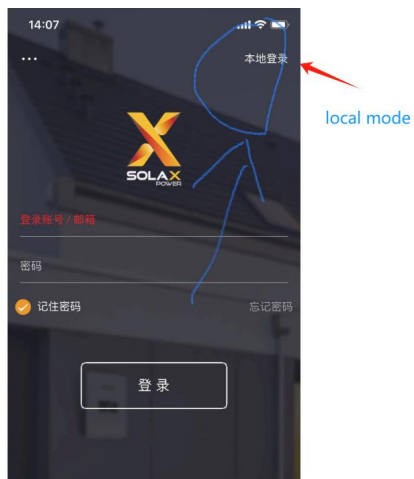
Step 1: Screw off the dongle back cover, and insert the nano size SIM card. Screw those components.



Untie the antenna (ensure that the antenna is in the unfolding status and no acute angle exists) and then screw down the antenna on Pocket WiFi+4GM.



4. Go on SOLAX APP, click “ Local Mode” at the right upper corner



5. Scan or type in the dongle SN, and “ Login”



6. Here below the local mode page, please go to “ Dongle “ at right bottom



7. Access to the below page, so you can pair the APN on site

