

SOLARMAN APP USER MANUAL



IGEN Tech. Co., Ltd.

Address: A2-B-4, Tian'an iPark, No.228 Linghu Avenue, New District, Wuxi, Jiangsu Province, P.R.China

Customer Hotline : +86 400 181 0512

Support Email : customerservice@solarmanpv.com



Facebook

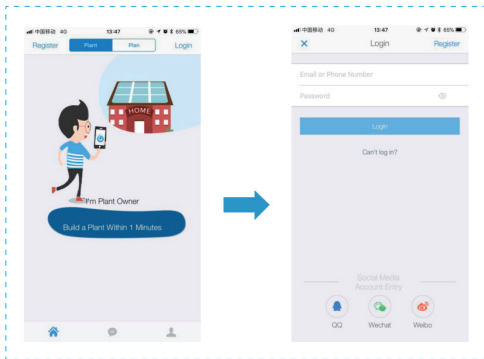
1. Download APP

iPhone : Search "SOLARMAN" in Apple Store.

Android : Search "SOLARMAN" in Google Play.

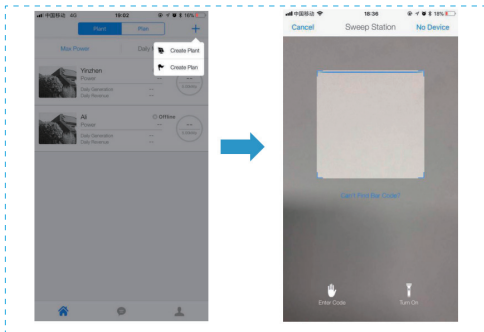
2. Register

Click [Register] to create new account. You can use email to register.



3. Create Plant

3.1 Click [+] and select [Create Plant]. Then scan the serial number of the stick logger, or manually enter the serial number.



3.2 Edit plant information.

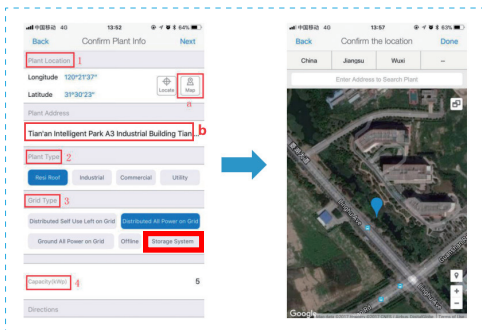
(1) Confirm your plant location (GPS function will automatically determine the plant site; if you want to modify the location, click the "map" icon, and then manually enter the address in box b)

(2) Select your plant type

(3) Select your grid type

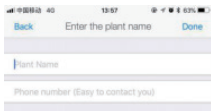
(4) Fill in plant capacity

(You may keep the default settings in the rest of blank because APP has received local electricity prices and subsidies)

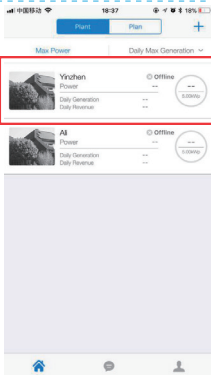


3.3 Input Plant Name

It is suggested to create a plant name like "location + name + capacity" (e.g., Wuxi IGEN 8.1 KW), then click [Done].



3.4 Now you can see your new plant on the homepage.



5

Then you will see the data upload in about 5 mins