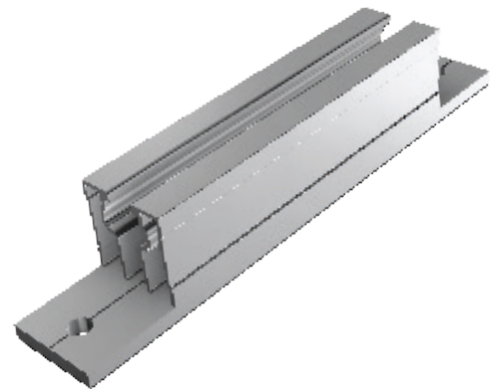




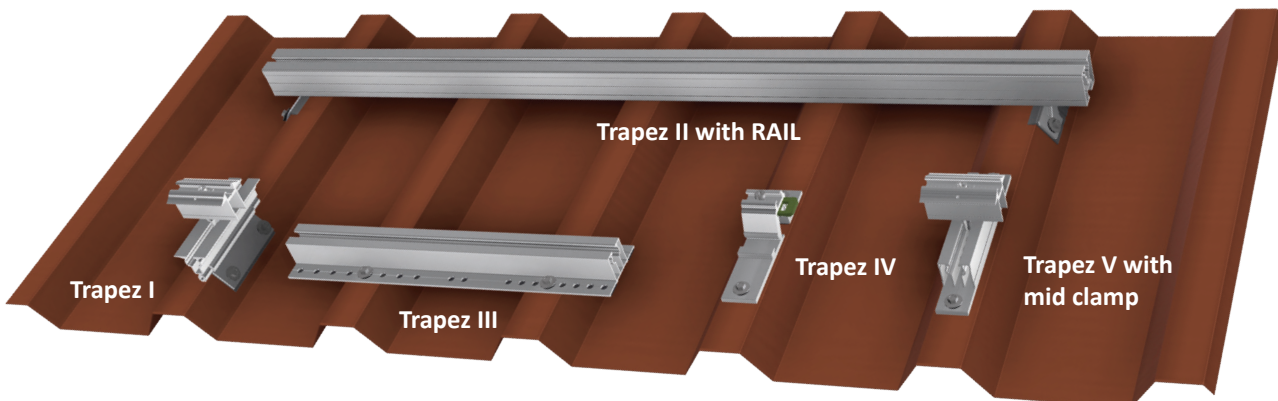
Your advantages with our products

- » Convenient and time-saving installation from the top
- » Short rail with integrated rail channel for horizontal module installation
- » Vertical modul mounting possible through additional use of Support Plates (item no. 91701-000) or Cross Connectors and RAILS
- » Installation on top of the rib ensures best accessibility and greatest possible distance from the water-bearing layer
- » Due to the increased contact area, higher forces can be transferred via the trapezoidal sheet
- » Optional: Potential Equalization Plate
- » Pre-installed EPDM rubber is UV-resistant and ensures water-sealing of the attachment
- » Self-tapping screws incl. EPDM sealing washer available separately
- » Material: Aluminum, EPDM rubber

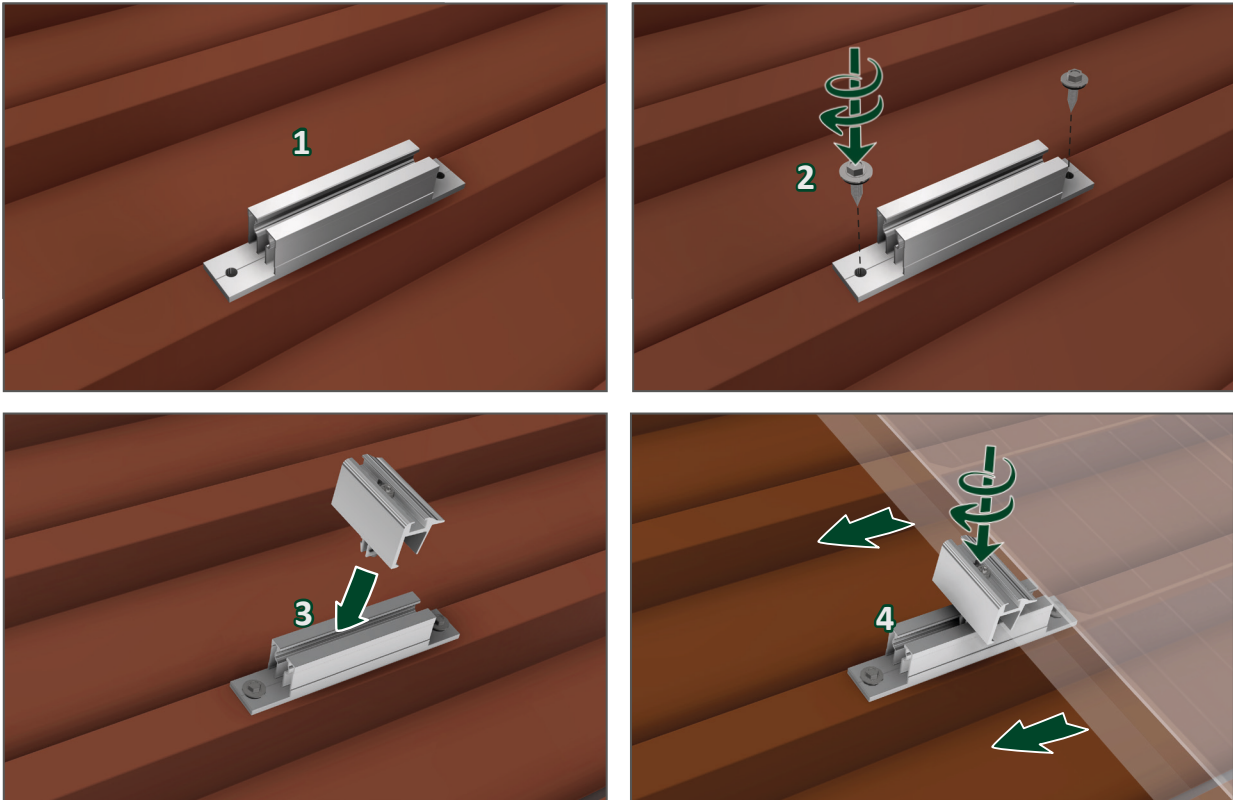


Trapez V
Item no. 11202-01

SL Rack Trapez-Overview:



*Our warranty conditions apply. They are available at www.sl-rack.com

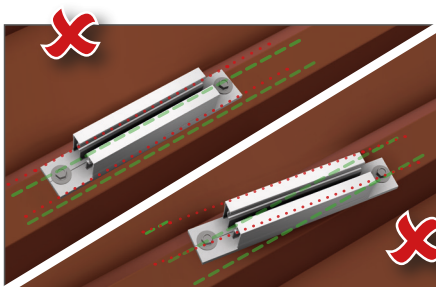


Installation

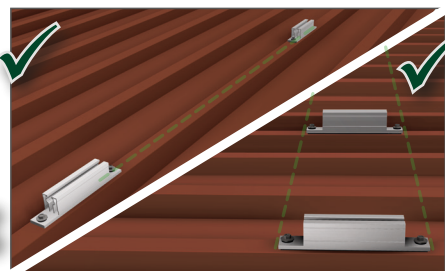
1. Position Trapez V according to the structural report (centered, parallel to the rib).
2. Use a cordless screw driver with depth stop to install the optionally available screws incl. EPDM sealing washer centered on the top of the rib (2 Nm).
3. Push the claw of the end clamp into the rail channel of Trapez V.
4. Put down the module and fasten it with end and mid clamps (Torx TX40 with 6 Nm)
5. The optional use of cross connectors enables additional vertical rail mounting.

Alignment

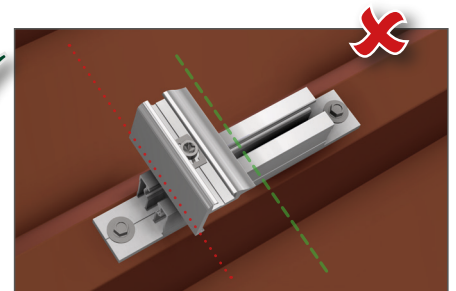
The installation of Trapez V has to be symmetrical. In case of an optional cross-rail system the max. cantilever according to the structural report has to be adhered to.



Always install centered, parallel to the rib



Always install Trapez V vertical on top of the ribs, the attachments should be in a horizontal line.



The clamps should be centered in the profile - the edge areas are not permitted due to statics.

Accessories



Item no.
93155-25

Self-tapping screw 5.5 x 20-25, sealing washer Ø 16 mm
Drilling capacity steel..... 0.5 mm - 2.0 mm
Drilling capacity aluminum..... 0.5 mm - 2.0 mm
Packaging unit (PU)..... 100 pieces



93160-25

Self-tapping screw 6.0 x 25-25, sealing washer Ø 16 mm
Drilling capacity steel..... 0.4 mm - 2.0 mm
Drilling capacity aluminum..... 0.5 mm - 2.0 mm
Packaging unit (PU)..... 100 pieces

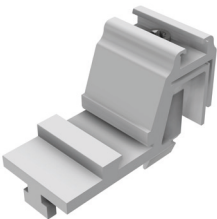


93155-26



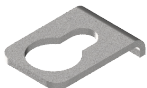
Beware of metal swarf on the roof!

Self-drilling screw 5.5 x 25, sealing washer Ø 16 mm
Drilling capacity steel..... 0.4 mm - 1.5 mm
Drilling capacity aluminum..... 0.4 mm - 5.0 mm
Packaging unit (PU)..... 100 pieces



91202-00

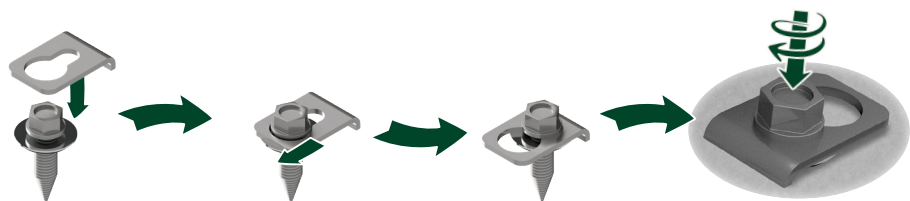
Cross Connector



93201-00

Potential Equalization Plate

The Potential Equalization Plate transfers the potential of the system/ modules to the trapezoidal roof, provided that the trapezoidal sheet metal roof is already grounded. The Potential Equalization Plate has to be placed between the screw head and the sealing washer.





Technical Data

Material	Aluminum, EPDM rubber (sealing)
Design Tool	SL-Rack-Configurator Solar.Pro.Tool .
Statik	The structural analysis is carried out in accordance with the current country-specific standards (EN 1991, EC1 for Germany). Depending on snow loads, wind loads, or when utilizing large modules, it may be necessary to use more than the usual 4 fastening points. Make sure to observe the installation manual of the respective module manufacturer. The load-bearing capacity of the roof has not been evaluated by SL Rack.



It is our top priority to make the installation process for you as quick, easy and efficient as possible. Please share your experiences, ideas or criticism with us, so we can continue to improve our products and develop new ones.



SL Rack **Feedback**
[Provide Feedback >](#)



SL Rack **Website**
[Check it out >](#)



SL Rack **YouTube**
[Watch videos >](#)

Find us on



Subject to technical
changes and misprints.
Version 05/2022 V4