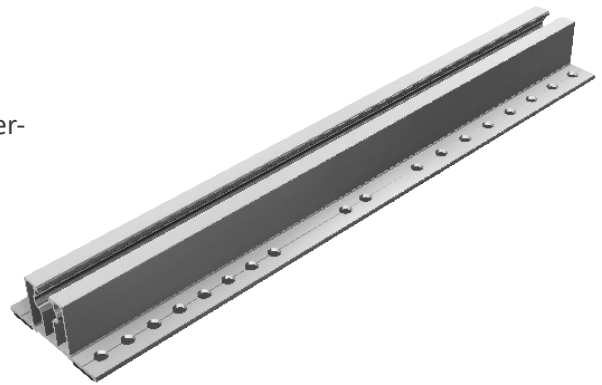




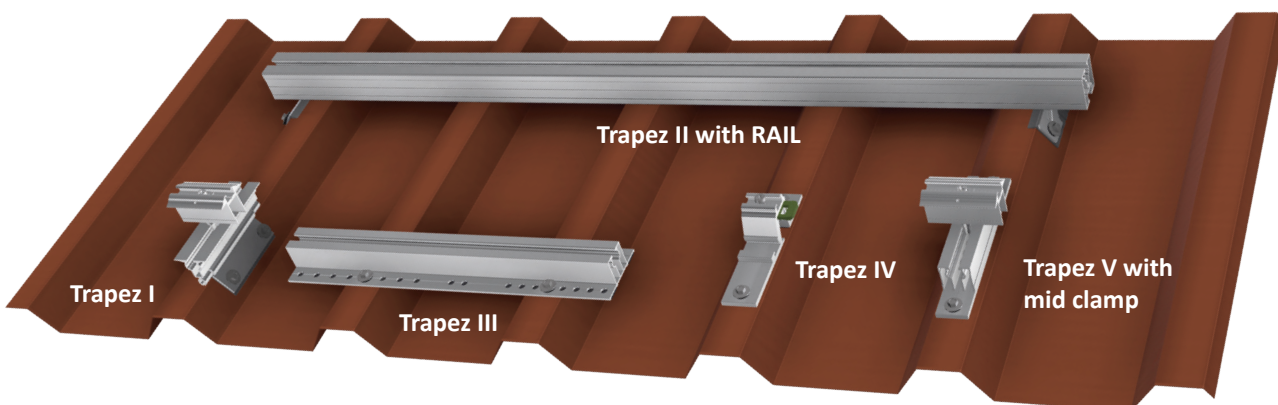
Your advantages with our products

- » Convenient and time-saving installation from the top
- » 370 mm long rail can span over several ribs
- » Installation on top of the rib ensures best accessibility and greatest possible distance from the water-bearing layer
- » Vertical module mounting; horizontal mounting requires the use of Support Plates (item no. 91701-00)
- » Optional: Use Cross Connector to install additional RAILS
- » Optional: Potential Equalization Plate
- » Pre-installed EPDM rubber is UV-resistant and ensures water-sealing of the attachment
- » Self-tapping screws incl. EPDM sealing washer available separately
- » Material: Aluminum, EPDM rubber

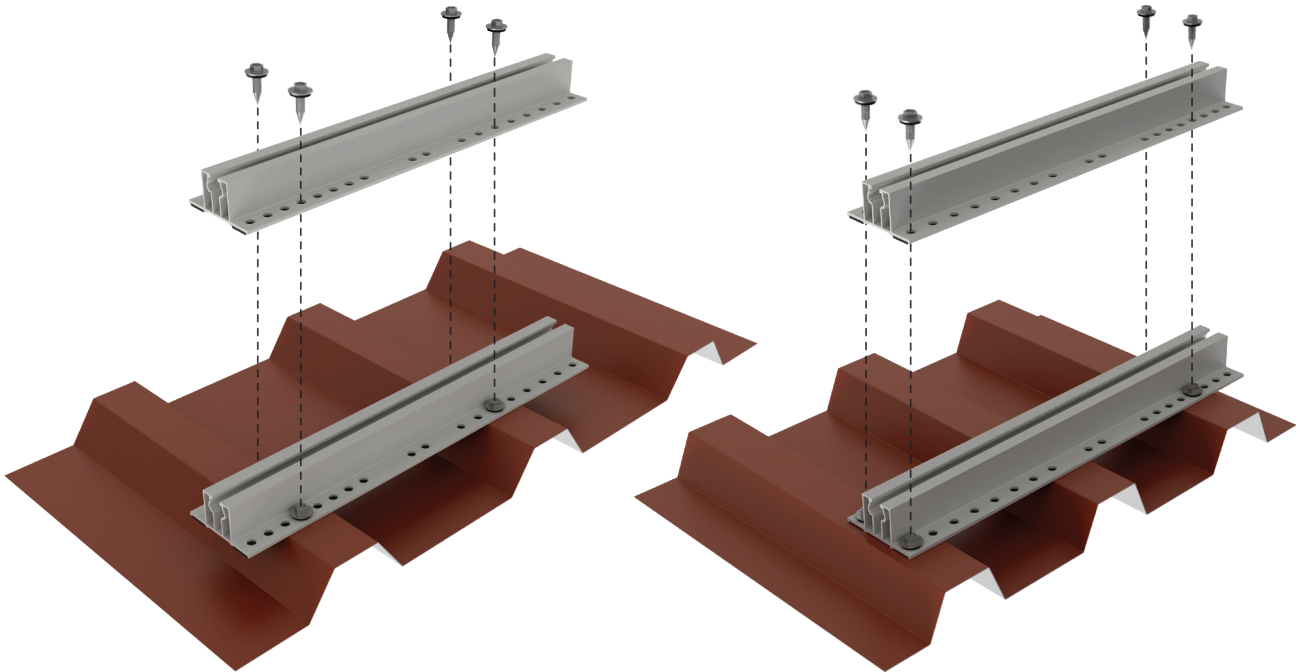


Trapez III
Item no. 11205-03

SL Rack Trapez-Overview:



*Our warranty conditions apply. They are available at www.sl-rack.com

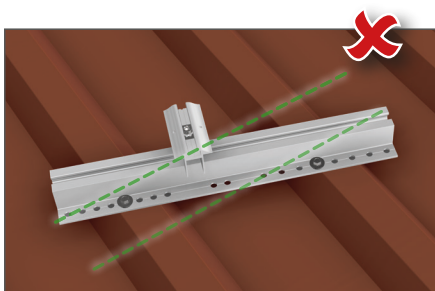


Installation

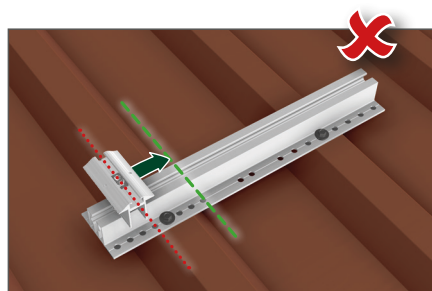
1. Position Trapez III according to the structural report perpendicular to the ribs, with the greatest possible span.
2. Use a cordless screw driver with depth stop to ensure the optionally available screws have a firm and flush fit, preferably in the center of the rib (2 Nm).
3. Place the module on top and fixate it with end and mid clamps (Torx TX 40 with 6 Nm).
4. The optional use of cross connectors enables additional vertical rail mounting.

Alignment

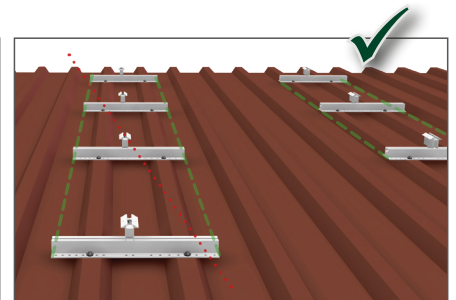
The installation of Trapez III has to be symmetrical.



Always attach perpendicular to the rib.



Due to statics, clamping in the edge area is not permitted



Install Trapez III parallel, if possible in a straight line.

Accessories



Item no.
93155-25

Self-tapping screw 5.5 x 20-25, sealing washer Ø 16 mm

Drilling capacity steel..... 0.5 mm - 2.0 mm
 Drilling capacity aluminum..... 0.5 mm - 2.0 mm
 Packaging unit (PU)..... 100 pieces



93160-25

Self-tapping screw 6.0 x 25-25, sealing washer Ø 16 mm

Drilling capacity steel..... 0.4 mm - 2.0 mm
 Drilling capacity aluminum..... 0.5 mm - 2.0 mm
 Packaging unit (PU)..... 100 pieces



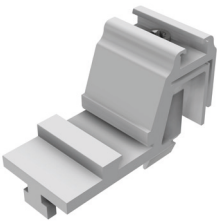
93155-26

Self-drilling screw 5.5 x 25, sealing washer Ø 16 mm

Drilling capacity steel..... 0.4 mm - 1.5 mm
 Drilling capacity aluminum..... 0.4 mm - 5.0 mm
 Packaging unit (PU)..... 100 pieces

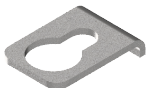


Beware of metal swarf on the roof!



91202-00

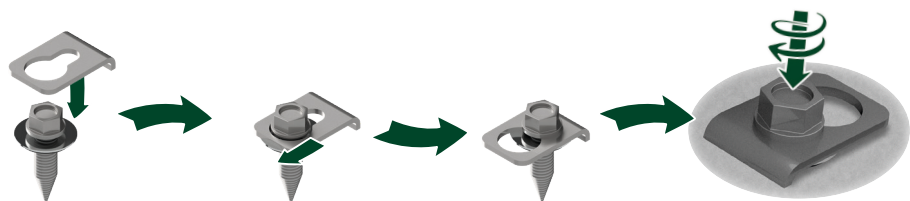
Cross Connector



93201-00

Potential Equalization Plate

The Potential Equalization Plate transfers the potential of the system/ modules to the trapezoidal roof, provided that the trapezoidal sheet metal roof is already grounded. The Potential Equalization Plate has to be placed between the screw head and the sealing washer.





Technical Data

Material	Aluminum, EPDM rubber (sealing)
Design Tool	SL-Rack-Configurator Solar.Pro.Tool .
Statik	The structural analysis is carried out in accordance with the current country-specific standards (EN 1991, EC1 for Germany). Depending on snow loads, wind loads, or when utilizing large modules, it may be necessary to use more than the usual 4 fastening points. Make sure to observe the installation manual of the respective module manufacturer. The load-bearing capacity of the roof has not been evaluated by SL Rack.



It is our top priority to make the installation process for you as quick, easy and efficient as possible. Please share your experiences, ideas or criticism with us, so we can continue to improve our products and develop new ones.



SL Rack **Feedback**
[Provide Feedback >](#)



SL Rack **Website**
[Check it out >](#)



SL Rack **YouTube**
[Watch videos >](#)

Find us on



Subject to technical
changes and misprints.
Version 05/2022 V9