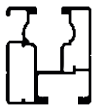
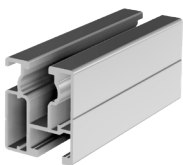
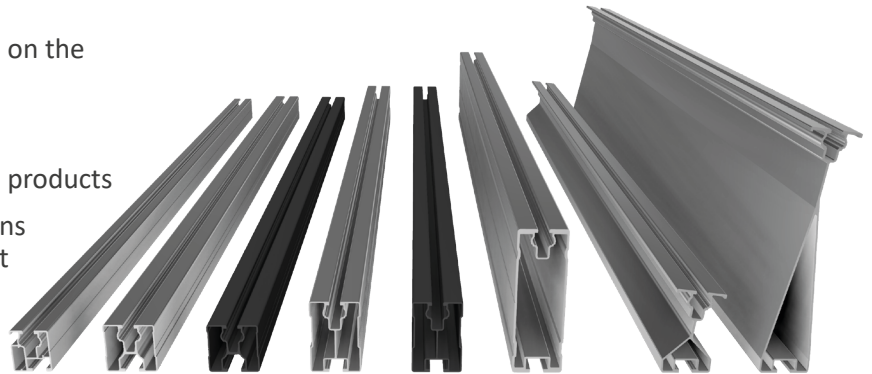


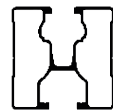
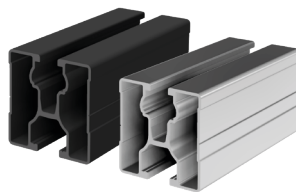


Your advantages with our products

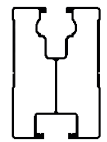
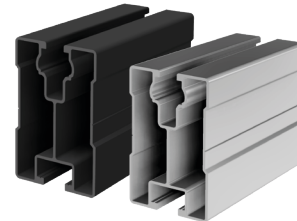
- » Deep top rail channel accommodates module clamps for frame heights 30 mm - 50 mm
- » Bottom rail channel is optimized to fit all SL Rack roof-top attachments
- » Compatible with popular racking systems on the market
- » Easy handling and stacking
- » Same weight/static values as comparable products
- » Different rail heights result in varying spans (RAIL 60 and RAIL 120 provide the longest spans between roof attachments)
- » RAIL 35 is weight-optimized for lower loads
- » RAIL 120 ensures easy access to plugs and better rear ventilation of the modules
- » RAIL 7 can lead to yield increase, thanks to an additional inclination of 7°
- » Available in various length, also in black anodized



RAIL 35



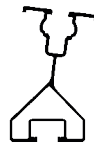
RAIL 40



RAIL 60



RAIL 120



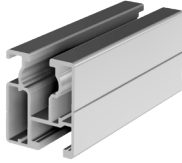
RAIL 7
bottom



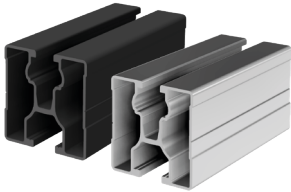
RAIL 7
top

*Our warranty conditions apply. They are available at www.sl-rack.com

Variants



RAIL 35 - 4350 mm
Item no. 81135-4350

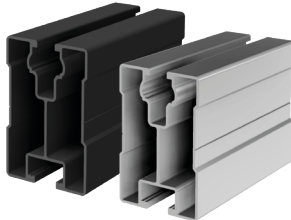


RAIL 40 - 4350 mm
Item no. 81140-4350

RAIL 40 - 5400 mm
Item no. 81140-5400

**RAIL 40 - 4350 mm,
black anodized**
Item no. 86140-4350

**RAIL 40 - 5400 mm,
black anodized**
Item no. 86140-5400

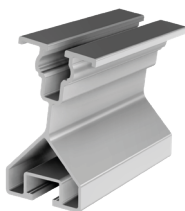


RAIL 60 - 4350 mm
Item no. 81160-4350

**RAIL 60 - 4350 mm,
black anodized**
Item no. 86160-4350



RAIL 120 - 5400 mm
Item no. 81112-5400



RAIL 7 bottom - 4350 mm
Item no. 81107-4350



RAIL 7 top - 4350 mm
Item no. 81106-4350

Accessories



For Rail 40 and 60 we also offer color-matched end caps, which have openings for drainage and are compatible with other systems on the market:

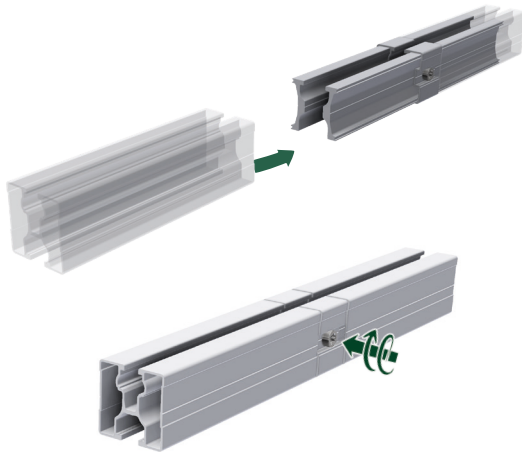
Plastic End Cap RAIL 40, grey
Item no. 94640-06

Plastic End Cap RAIL 40, black
Item no. 94640-05

Plastic End Cap RAIL 60, grey
Item no. 94660-06

Plastic End Cap RAIL 60, black
Item no. 94660-05

Connectors



Internal Connector RAIL 2.0 for RAIL 35

Item no. 81135-02

Internal Connector RAIL 2.0 for RAIL 40

Item no. 81140-02

Internal Connector RAIL 2.0 for RAIL 40, black anodized

Item no. 86140-02

Internal Connector RAIL 2.0 for RAIL 60

Item no. 81160-02

Internal Connector RAIL 2.0 for RAIL 60, black anodized

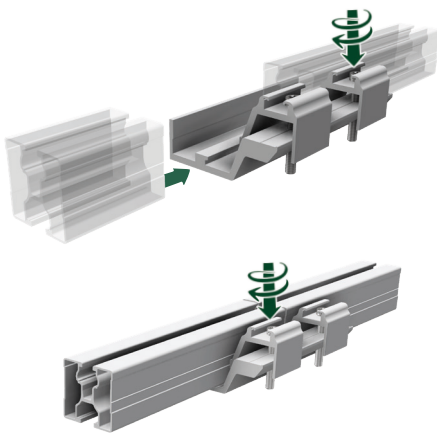
Item no. 86160-02

Internal Connector RAIL 2.0 for RAIL 120

Item no. 81112-02



1. Insert the connector into the RAILS
2. Tighten the bolts on both sides with Torx TX40 (6 Nm)

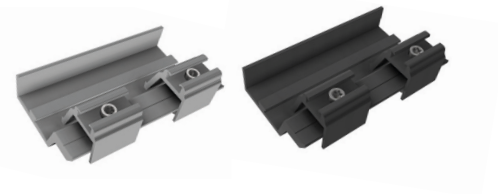


External Connector RAIL

Item no. 81140-05

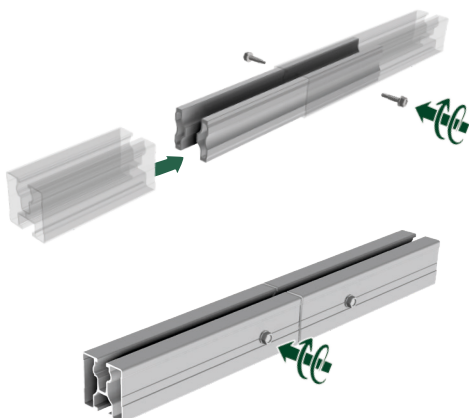
External Connector RAIL, black anodized

Item no. 86140-05



One connector for any size RAIL!

1. Insert the end of the first profile into the external connector and tighten the profile clamp with Torx TX40 (6 Nm).
2. Insert the end of the second profile flush and tighten the second profile clamp with Torx TX40 (6 Nm).



Internal Connector RAIL 40

Item no. 81140-01

Including 2 self-drilling screws 4.8 x 20 mm

Please note that 2 internal connectors are required to join 2 profiles!

1. Insert the two connector pieces halfway into the first profile. Position the self-drilling screw 4.8 x 20 mm in the notch in the center of the profil. Use the lowest gear of a cordless screwdriver to attach one screw on each side.
2. Insert the second profile flush and attach the self-drilling screws 4.8 x 20 mm in the notch in the center of the profile on both sides.



Technical Data

Material Aluminum, stainless steel (bolts)

Design Tool SL-Rack-Configurator **Solar.Pro.Tool**.

Statik The structural analysis is carried out in accordance with the current country-specific standards (EN 1991, EC1 for Germany). Depending on snow loads, wind loads, or when utilizing large modules, it may be necessary to use more than the usual 4 fastening points. Make sure to observe the installation manual of the respective module manufacturer. The load-bearing capacity of the roof has not been evaluated by SL Rack.

Your opinion is important to us!

It is our top priority to make the installation process for you as quick, easy and efficient as possible. Please share your experiences, ideas or criticism with us, so we can continue to improve our products and develop new ones.



SL Rack **Feedback**
[Provide Feedback >](#)



SL Rack **Website**
[Check it out >](#)



SL Rack **YouTube**
[Watch videos >](#)

Find us on



Subject to technical
changes and misprints.
Version 05/2022 V11