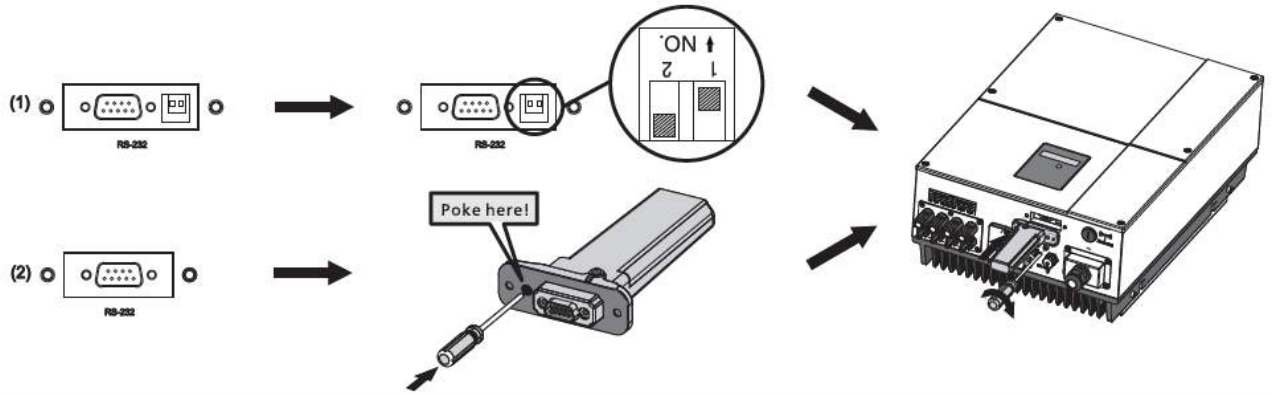


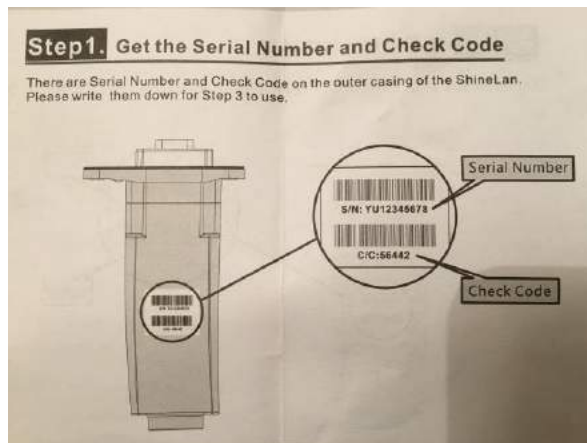
ShineLan Module setup guide

How to set up the ShineLan dongle?

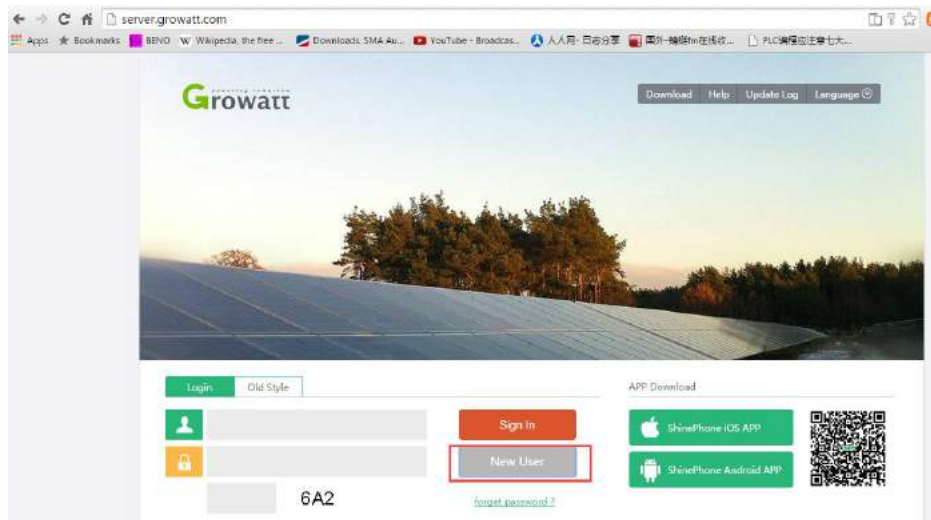
1. Plug ShineLan module to the RS232 port of the inverter or SP2000/SP1000. If the RS232 port has DIP switch, DIP1 should be set to 1;



2. Then sign up an account on Shine Server, and register your ShineLan module on it.
 - a. Please find the Serial Number and Check Code (five digitals) on the box or dongle for Shine Server account registration (the first step specified in the manual);



- b. Enter **“server.growatt.com”** in your web browser, and click **“New User”** in Shine Server portal;



- c. Enter all the required information in the register window, tick “agree” and then click “Register”;

- d. Then a pop-up window appears asking you to enter the plant information;

- e. Enter all the fields with the asterisk mark and click “Save”;

edit plant

installation information

plant name *

instal date *

power(Wp) *

company *

Set income formula(Set 1kwh as the conversion standard)

capital income

coal saved(Kg)

CO₂ reduced

SO₂ reduced

location information

country *

city

time zone *

latitude

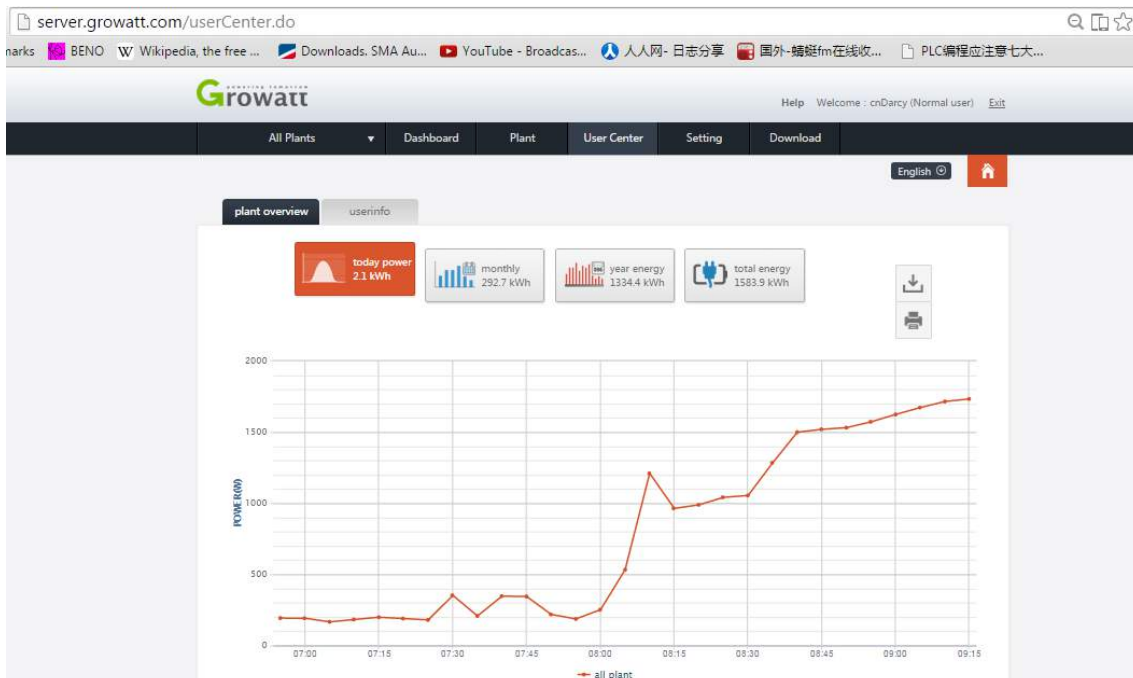
longitude

plant image

map(drag red marker to select location)

please wait, are to take life Loading ...

3. After that, all the setting is done. The data will be uploaded to the Shine Server every 5 minutes.

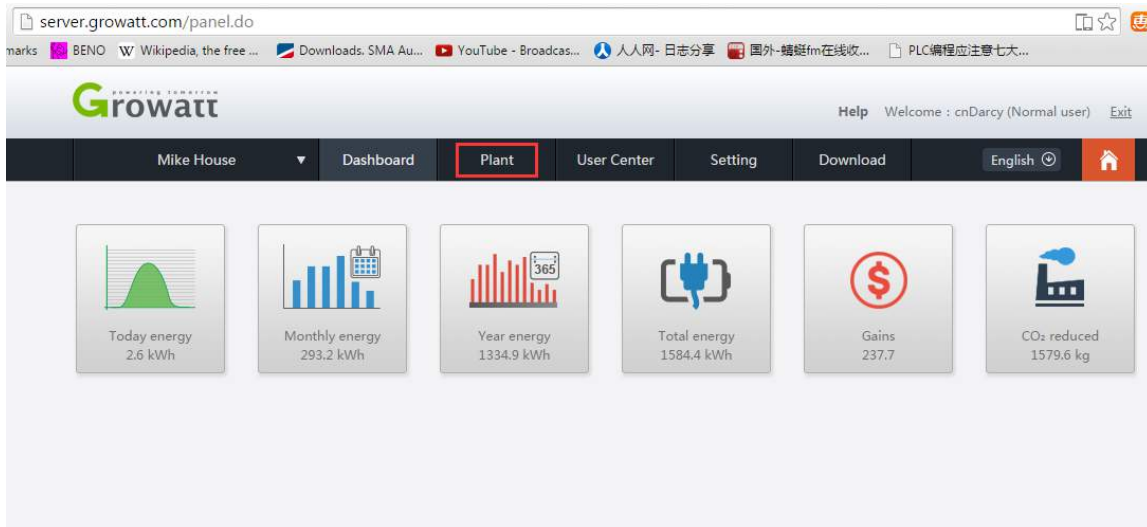


The End

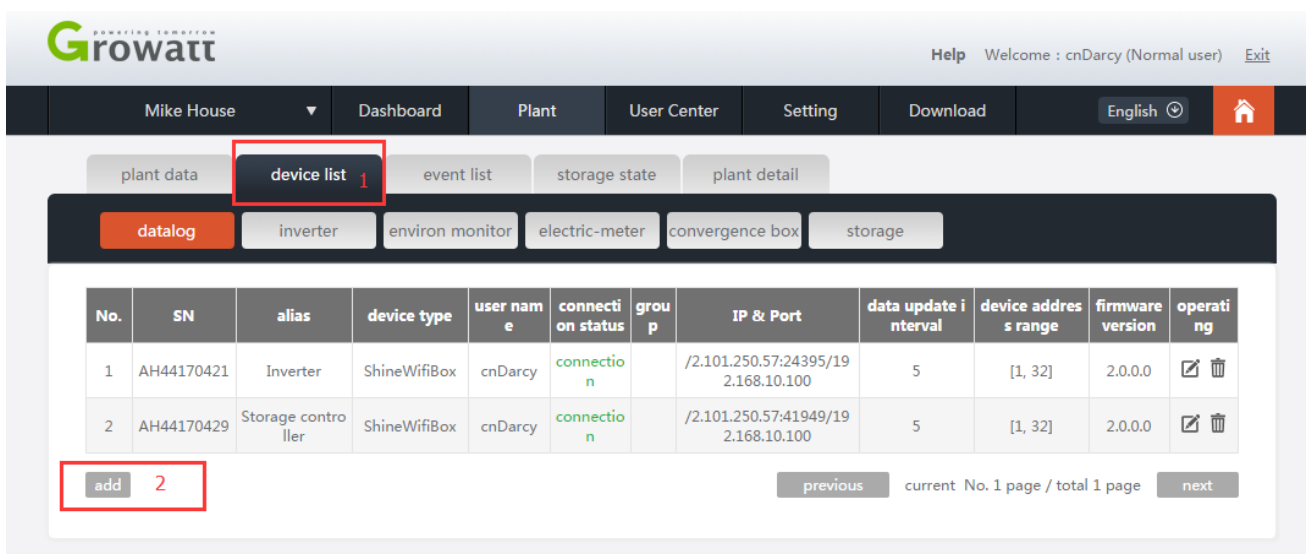
How to add ShineLan dongle to your existing plant?

If you have more than one **ShineLan** dongles and you want to put them all in one account and plant:

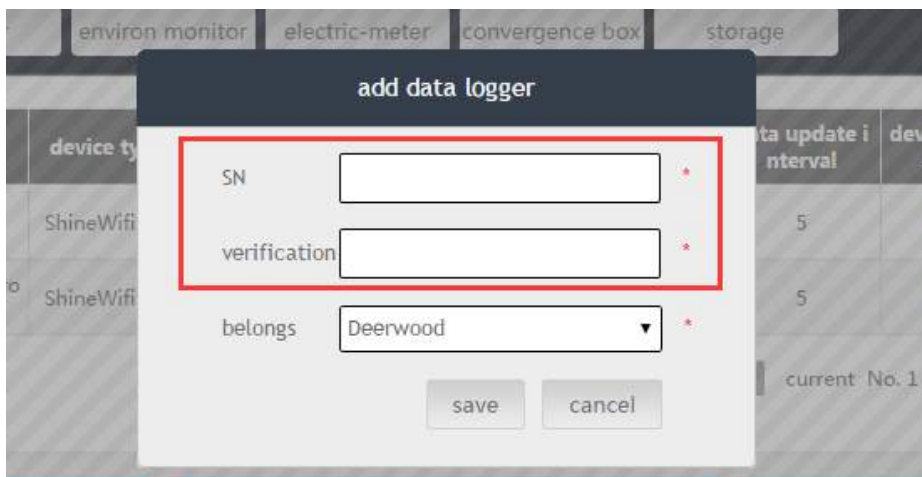
- a. Sign in the Shine Server with your account, click the “**Plant**” tab;



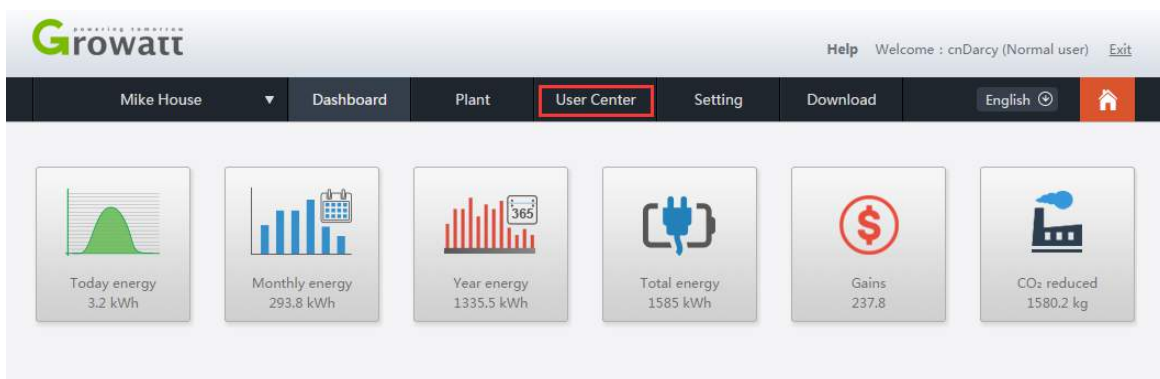
- b. Click “**device list**” tab, then click “**Add**” at the bottom left corner;



- c. Enter the serial number and Check code of the ShineLan dongle, click “**Save**”. Then all the setting is complete.



How to edit Plant information?





edit plant

installation information

plant name *

instal date *

power(Wp) *

company *

Set income formula(Set 1kwh as the conversion standard)

capital income

coal saved(Kg)

CO₂ reduced

SO₂ reduced

location information

country *

city

time zone *

latitude

longitude

plant image

map(drag red marker to select location)

please wait, are to take life Loading ...

How to delete ShineLan module on Shine Server?

If you inadvertently set a wrong parameter or you just installed a new ShineLan dongle to replace the old one, you'll need to know how to delete the ShineLan dongle.

Mike House ▾ Dashboard **Plant** 1 User Center Setting Download English 🌐 🏠

plant data **device list** 2 event list storage state plant detail

datalog inverter environ monitor electric-meter convergence box storage

No.	SN	alias	device type	user name	connection status	group	IP & Port	data update interval	device address range	firmware version	operating
1	AH44170421	Inverter	ShineWifiBox	cnDarcy	connection		/2.101.250.57:24395/19 2.168.10.100	5	[1, 32]	2.0.0.0	📄 🗑️ 3
2	AH44170429	Storage controller	ShineWifiBox	cnDarcy	connection		/2.101.250.57:9057/19 2.168.10.100	5	[1, 32]	2.0.0.0	📄 🗑️

add previous current No. 1 page / total 1 page next

Mike House ▾ Dashboard Plant User Center Setting Download English 🌐 🏠

plant data device list event list storage state plant detail

datalog inverter environ monitor electric-meter convergence box storage

No.	SN	alias	device type	data update interval	device address range	firmware version	operating
1	AH44170421	Inverter	ShineWifiBox	5	[1, 32]	2.0.0.0	📄 🗑️
2	AH44170429	Storage controller	ShineWifiBox	5	[1, 32]	2.0.0.0	📄 🗑️

add current No. 1 page / total 1 page next

message

❌ Confirm Delete?

yes cancel

How to delete the Plant?

Growatt Help Welcome : cnDarcy (Normal user) Exit

All Plants ▾ Dashboard Plant **User Center** Setting Download English 🌐 🏠

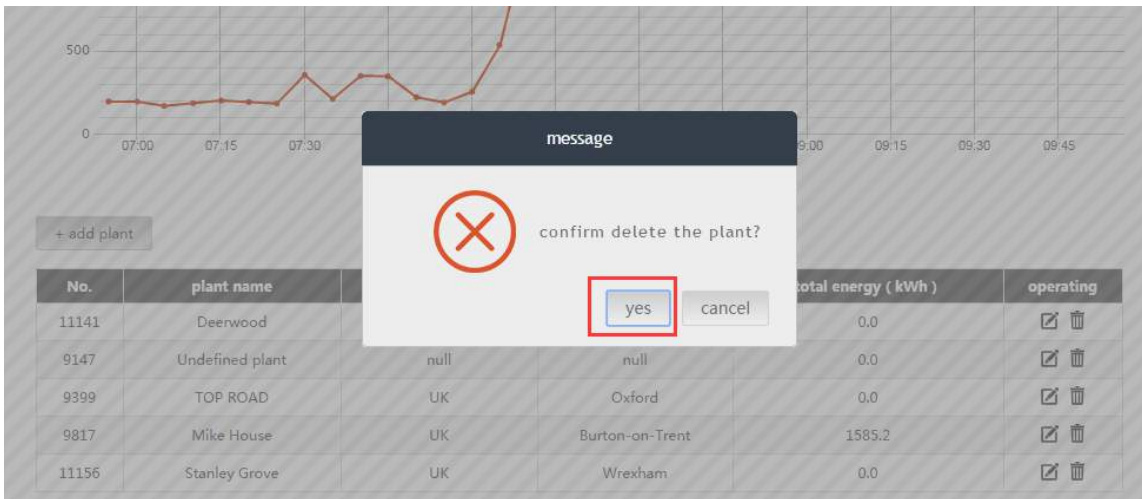
plant overview userinfo

today power 3.4 kWh monthly 294 kWh year energy 1335.7 kWh total energy 1585.2 kWh

POWER (W)

2500
2000
1500
1000
500
0

2. Scroll down to the bottom



If there is any problem during the ShineLan dongle setting, please contact your installer or Growatt(service@ginverter.com) for assistance.