

EU Type Examination Certificate Number: 0120/ SGS0103/R1

EM-Lite Limited

1 Stevern Way
Peterborough
Cambridgeshire
PE1 5EL

Instrument Identification:
ECA2.*

Single Phase, Active Import/ Export, Electricity Meter

Instrument Traceable Number
0120/ SGS0103

has been assessed and certified as meeting the requirements of

EU Directive 2014/32/EU on Measuring Instruments Annex II, Module B

It is certified that the manufacturer's technical design and specimen for the above instrument has been examined and, based on the evidence submitted, it is considered that the instrument conforms to the requirements of Annex V of EU Directive 2014/32/EU

This certificate must be used in conjunction with a certificate covering the product verification as required in Annex II, Module D or Annex II, Module F

This certificate is valid for 10 years from 23rd March 2020 until 22nd March 2030

Issue 2

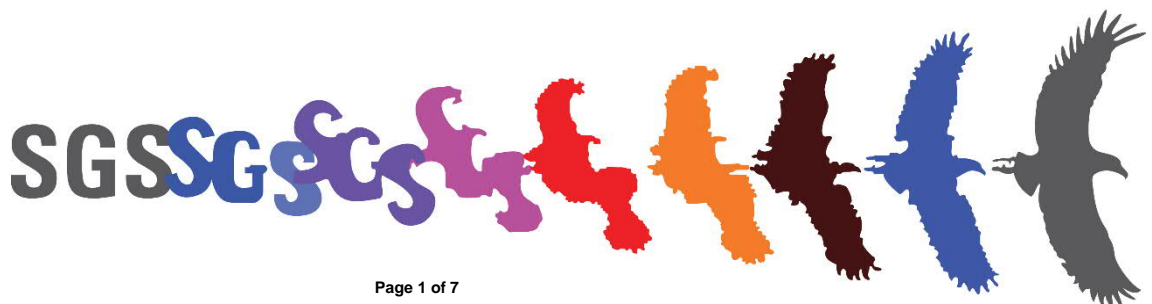
Certification is based on report number(s)
EMA157563/1 dated 18th June 2012
EMA277439/1 dated 18th March 2020

Authorised Signature



Mikko Välimäki

SGS Fimko OY, Notified Body 0598
Takomotie 8, FI-00380 Helsinki, Finland
t +358 9 6963 61 www.sgs.fi





EU-Type Examination Certificate Number:


0120/SGS0103/R1

Issue Number: 2

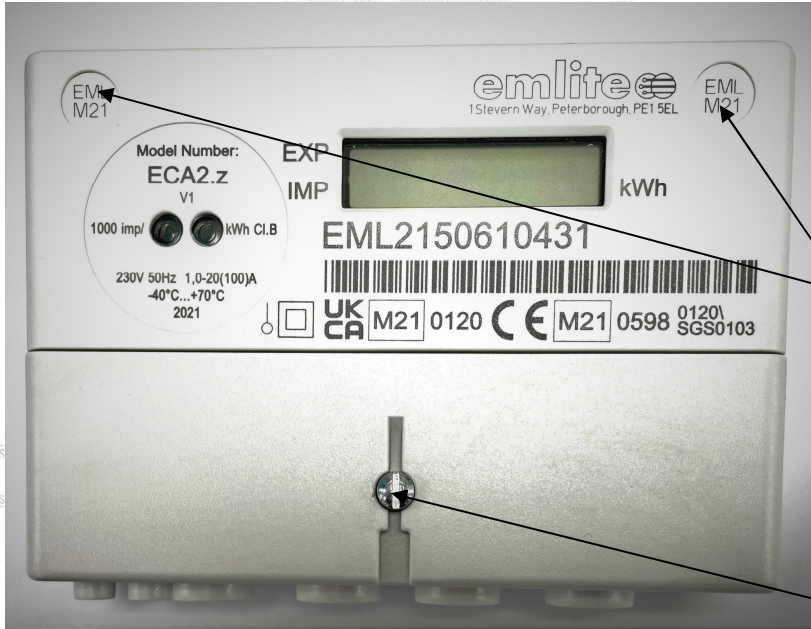
Dated: 26th May 2022

1. Technical Data

Manufacturer	EM-Lite Ltd
Meter Type	ECA2.*
Voltage Rating (<i>Un</i>)	220V – 240V
Current Rating (<i>I_{min}</i> – <i>I_{ref}</i> (<i>I_{max}</i>))	0,25-5(100) 0,5-10(100) 0,75-15(100) 1-20(100)
Frequency (<i>Fn</i>)	50Hz
Active Accuracy Class (<i>kWh</i>)	A or B (kWh)
Type of circuit	1p2w
Temperature Range	-40°C to +70°C
Firmware Version No's	V1.01-5 Checksum 50787 V1.01-6 Checksum 50814 V1.01-7 Checksum 10446 V1.01-8 Checksum 26153
Identification Location	LCD
Bill Of Materials No's	ECA2.z & ECA2.nz ECA2-4001- 02 REV A, ECA2-4001-03 REV A ECA2-4001-03 REV B, ECA2-4001-04 REV A ECA2.v & ECA.nv ECA2-4002-02 REV A, ECA2-4002-03 REV A ECA2-4002-03 REV B, ECA2-4002-04 REV A
IP Rating	IP52
Insulation Protective Class	Class II
LED Pulse Constant	1000 imp/kWh
Impulse Voltage Rating	6kV
AC Voltage Rating	4kV
Terminal Cover Sealing Type	Wire & Crimp
Main Cover Sealing Type	Press Fit Non-removable Lasered Plastic Seals
Integrity of meter	Inaccessible without breaking seals
Intended Location of the Meter	Indoor
Type of Register	LCD
Terminal Arrangement(s)	BS
Location of Manufacturers Address	Nameplate

	EU-Type Examination Certificate Number:	
	0120/SGS0103/R1	
	Issue Number: 2	Dated: 26 th May 2022

2. Photograph of Meter and Sealing Plan



Main Cover Seals

Utility Seal

SGS

EU-Type Examination Certificate Number:

0120/SGS0103/R1

Issue Number: 2

Dated: 26th May 2022

3. Examples of Nameplates

EML M20

emlite
1Stevrn Way, Peterborough, PE1 5EL

EML M20

1000 imp/
kWh Cl.B

EXP
IMP kWh

Model Number:
ECA2.v
V1

EML2018123456

230V 50Hz 1,0-20(100)A
-40°C...+70°C 2020

CE M20 0120/SGS0103



EU-Type Examination Certificate Number:

0120/SGS0103/R1

Issue Number: 2

Dated: 26th May 2022

4. Calculation of the composite error/ MPE

During the type approval examination the influence factors for temperature, frequency and voltage are determined per load point. The table below represents the sum of the square values per load, determined via the following formula:-

$$\delta e(T, U, f) = \sqrt{(\delta e^2(T, I, \cos\phi), \delta e^2(U, I, \cos\phi), \delta e^2(f, I, \cos\phi))}$$

where

$\delta e(T, I, \cos\phi)$ = Additional error due to variation of the temperature at the same load

$\delta e(U, I, \cos\phi)$ = Additional error due to variation of the voltage at the same load

$\delta e(f, I, \cos\phi)$ = Additional error due to variation of the frequency at the same load

		Influence Factors for Temperature, Voltage & Frequency							
Current	PF Cos	-40°C	-25°C	-10°C	5°C	30°C	40°C	55°C	70°C
Imin	1.0	1.04	1.18	1.00	0.66	0.08	0.24	0.84	0.58
Itr	1.0	1.31	1.22	0.95	0.64	0.10	0.19	0.64	0.86
10ltr	1.0	1.02	0.79	0.52	0.30	0.17	0.35	0.62	0.82
Imax	1.0	0.91	0.27	0.15	0.20	0.52	0.68	0.95	0.72
Itr	0.5ind	0.88	1.25	0.99	0.63	0.12	0.26	0.75	0.89
10ltr	0.5ind	1.06	0.72	0.41	0.20	0.32	0.44	0.71	0.82
Imax	0.5ind	0.90	0.32	0.52	0.71	1.07	1.24	1.49	0.76
Itr	0.8cap	1.03	1.17	0.90	0.57	0.20	0.39	0.80	1.13
10ltr	0.8cap	1.06	0.77	0.48	0.27	0.20	0.39	0.63	0.94
Imax	0.8cap	0.94	0.16	0.13	0.29	0.66	0.83	1.09	0.87



EU-Type Examination Certificate Number:

0120/SGS0103/R1

Issue Number: 2

Dated: 26th May 2022

5. Annex of Variants

Product Variant Identification Details:

Type Designation

Description of meter

ECA2.z

4 terminal basic variant, no auxiliary connections

ECA2.v

4 terminal with electronic pulsed output variant


ECA2.nz

4 terminal basic variant, no auxiliary connections, including Net Register

ECA2.nv

4 terminal with electronic pulsed output variant, including Net Register

Modifications to the meter(s) described according to approval No.**0120/SGS0103** must be notified to the issuing body to confirm the meter(s) continuing compliance to the relevant pattern approval standard(s).

	EU-Type Examination Certificate Number:	
	0120/SGS0103/R1	
	Issue Number: 2	Dated: 26 th May 2022

6. Document Revision History

Issue	Date	Comments
1	23/03/2020	Initial Issue
2	26/05/2022	Issue 1 for SGS Fimko NB 0598 The original approval certificate issued 23/03/2022 Additional BoM versions ECA2-4001-03 REV B, ECA2-4001-04 REV A & ECA2-4002-03 REV B, ECA2-4002-04 REV A. New software version V1.01-8

This document is issued by the Company subject to its General Conditions for Certification Services, available on request or accessible at <http://www.sgs.com/en/Terms-and-Conditions.aspx>.

Attention is drawn to the limitation of liability, indemnification and jurisdiction issues defined therein. Any holder of this document is advised that information contained hereon reflects the Company's findings at the time of its intervention only and within the limits of Client's instructions, if any. The Company's sole responsibility is to its Client and this document does not exonerate parties to a transaction from exercising all their rights and obligations under the transaction documents. This document cannot be reproduced except in full, without prior written approval of the Company. Any unauthorized alteration, forgery or falsification of the content or appearance of this document is unlawful and offenders may be prosecuted to the fullest extent of the law.

Unless otherwise stated the results shown in this test report refer only to the sample(s) tested *and such sample(s) are retained for 28 days only.*

END OF CERTIFICATE