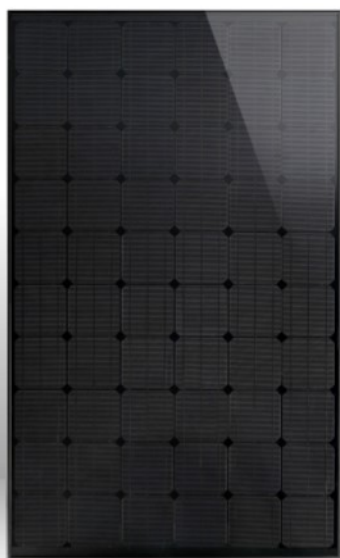




PLM-250MB-60 SERIES

Monocrystalline Silicon Solar Module

DELTA BLACK



The Delta Black Series from Perlight

- Monocrystalline
- Positive output tolerance
- Over 30 years manufacturing experience

Sleek and unobtrusive design

- Specially designed for the UK
- Blends-in instead of taking attention away from existing building attributes.
- No Silver lines

Fully compliant with worldwide standards

- MCS Certified
- Ammonia corrosion certified
- Salt Mist corrosion certified
- Fire Safety Certified
- PID Free

25 Year output performance warranty

- +90% output for 12 years
- +80% output over 25 years

12 Year workmanship warranty

Cell type	Monocrystalline
Cell Size (mm)	156 x 156
No. of cells per module	60
Module size (mm)	1650 x 992 x 40
Module weight	18.5 kg
Front Glass	3.2mm Tempered glass
Frame	Anodised Alu Alloy
Connector type	MC4



The next step in the seamless integration of photovoltaics into everyday life

DELTA BLACK



MANUFACTURING BASE

Perlight Solar Co.,Ltd
Muyu Administration District
Wenling
Zhejiang, 317521, China
Tel: +86 576 8647 7290
E: Jenny.uk@perlight.com

GLOBAL MARKETING CENTRE

Perlight Solar Co.,Ltd
E# 14th floor, 58 Xinqiniao Rd
PuDong District
Shanghai, 200129, China
Tel: +86 21 6105 2372
E: enquiry@perlight.com

EU SALES AND CUSTOMER CENTRE

Westech Solar (UK) Ltd
Unit 1, Bobby Fryer Close,
Garsington Rd
Oxford, OX4 6ZN, UK
Tel: +44 (0)1865 682 584
E: info@westech-solar.co.uk

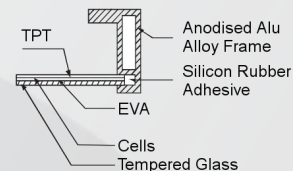
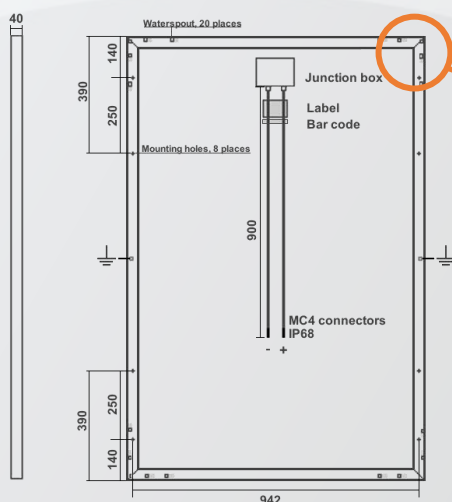
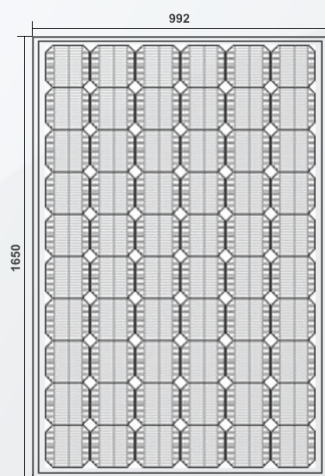




PLM-250MB-60 SERIES

Monocrystalline Silicon Solar Module

DELTA BLACK



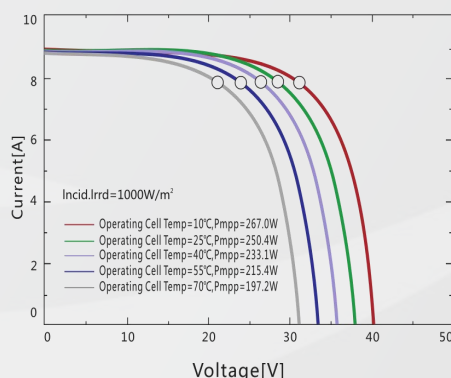
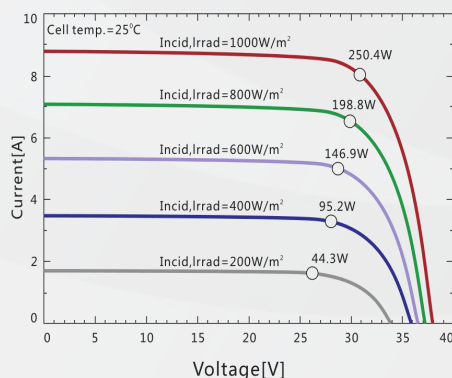
- Extremely reliable screw-less, interconnected frame for long-term flexibility and strength.
- 20 In-built drainage waterspouts.
- 8 mounting holes for direct mounting option.
- 2 Earth (Ground) points.

Module	PLM-250MB-60	PLM-260MB-60	PLM-265MB-60	PLM-270MB-60
Pm	250W	260W	265W	270W
Vmp	30.50	31.18	31.48	31.73
Imp	8.20	8.34	8.42	8.51
Voc	38.00	38.20	38.31	38.42
Isc	8.78	8.92	8.96	8.99
Cell Efficiency	17.96%	18.58%	18.94%	19.29%
Module Efficiency	15.27%	15.88%	16.19%	16.50%
Output per m²	152.74W/m ²	158.85W/m ²	161.90W/m ²	164.96W/m ²

Temperature Coefficient	
NOCT	45°C+/-2°C
Isc	0.06%/°C
Voc	-0.34%/°C
Pmax	-0.45%/°C
Power Tolerance	-0/+3%
Working Temperature	-40°C to 85°C
Max. System Voltage	1000VDC
Module Area	1.64m ²
Wind Rating	5400Pa
Hail Resistance	25mm @ 80km/h
Max. Fuse Rating	15 Amp

Electrical Curves:

PLM-250MB-60



- IEC61730 safety rated for high wind pressure, hail impact, snow load and fire .
- Certified against Salt mist corrosion for coastal areas.
- Certified against Ammonia corrosion for agricultural installations.
- Produced in an environmentally friendly ISO 9001, OHSAS 18001 and ISO 14000 certified manufacturing facility, which has been utilizing an onsite 360kW Perlight Solar system since 2006.



PERLIGHT SOLAR
Powering Possibilities

Available from:

MANUFACTURING BASE
Perlight Solar Co.,Ltd
Muyu Administration District
Wenling
Zhejiang, 317521, China
Tel: +86 576 8647 7290
E: Jenny.uk@perlight.com

GLOBAL MARKETING CENTRE
Perlight Solar Co.,Ltd
E# 14th floor, 58 Xinqiniao Rd
PuDong District
Shanghai, 200129, China
Tel: +86 21 6105 2372
E: enquiry@perlight.com

EU SALES AND CUSTOMER CENTRE
Westech Solar (UK) Ltd
Unit 1, Bobby Fryer Close,
Garsington Rd
Oxford, OX4 6ZN, UK
Tel: +44 (0)1865 682 584
E: info@westech-solar.co.uk

