

# Moixa® Smart Battery Quick Installation Guide

## Step 1: Installation Stage

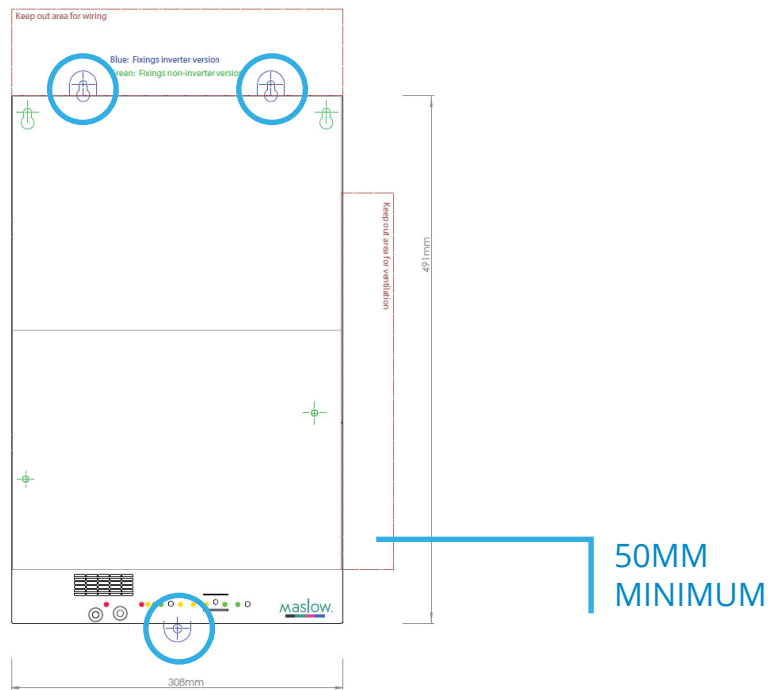
### Tools Required:

- A** Clamp Meter
- B** Drill
- C** Smart Phone  
or laptop
- D** 2.5 mm hex drive



### Part 1

Using the template provided, fix Moixa securely to the wall



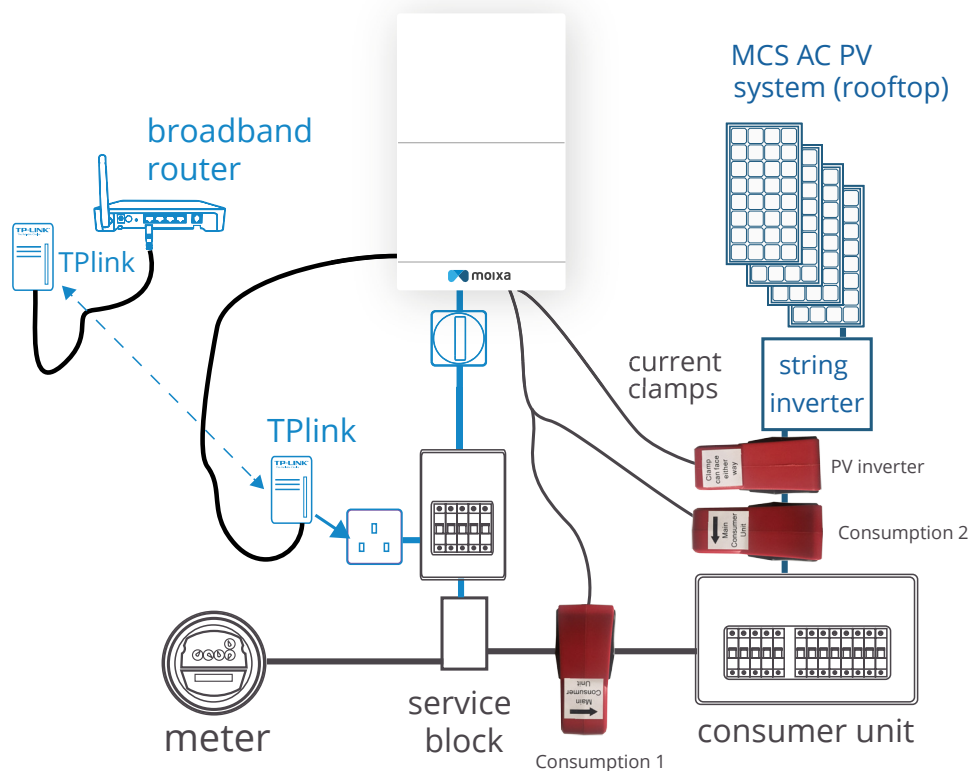
### Part 2

Connect batteries and **click** in place

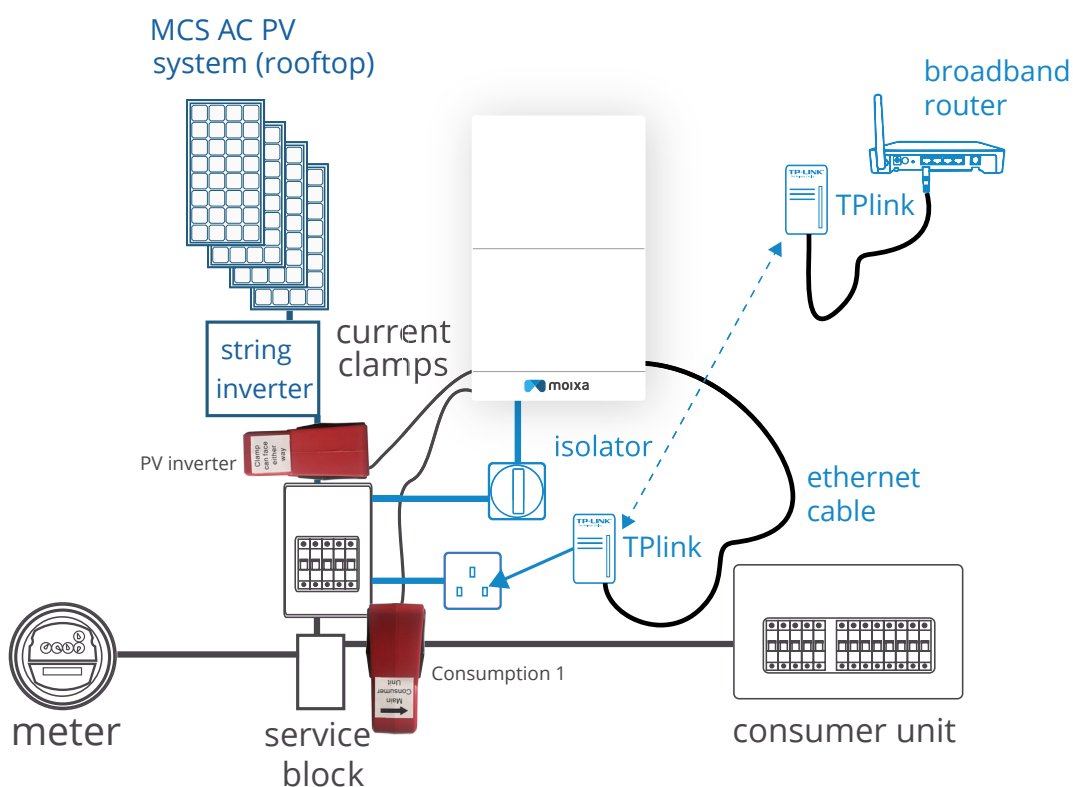


## Step 2: Configuring clamp meters

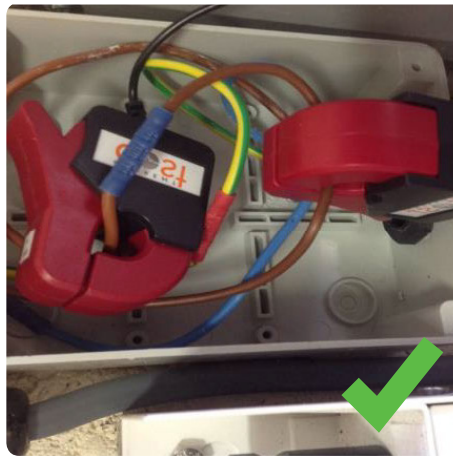
### 'Y Clamp Configuration' - PV included in consumption



### 'Single Clamp Configuration' - PV and consumption separated



**Y Clamps** Ensure the clamp's jaw is effectively closed & clamps not touching

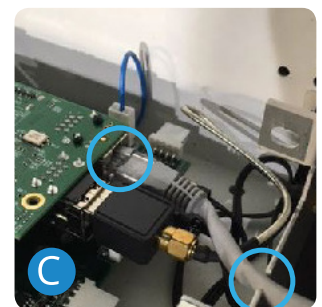
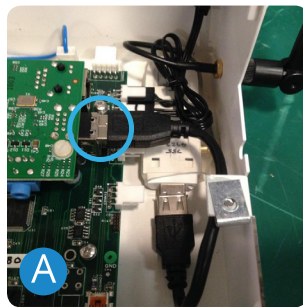


### Step 3: Data connection method

**Option 1A** Ethernet  
Direct cable

**Option 1B** Via Power line  
communication (TPlink)

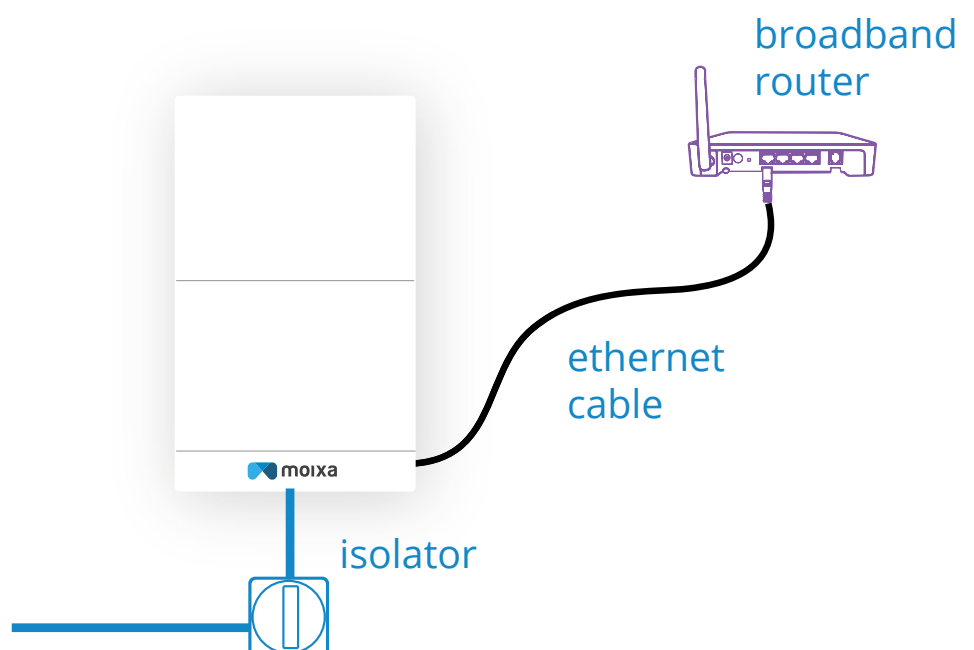
**Option 2** WiFi



**Ethernet:** For ethernet connections to broadband the Wifi dongle should be removed from the Pi and put in the labeled plastic bag and secured it safely inside the unit:

- A** Remove dongle
- B** Place into plastic bag
- C** Use slot to run cable

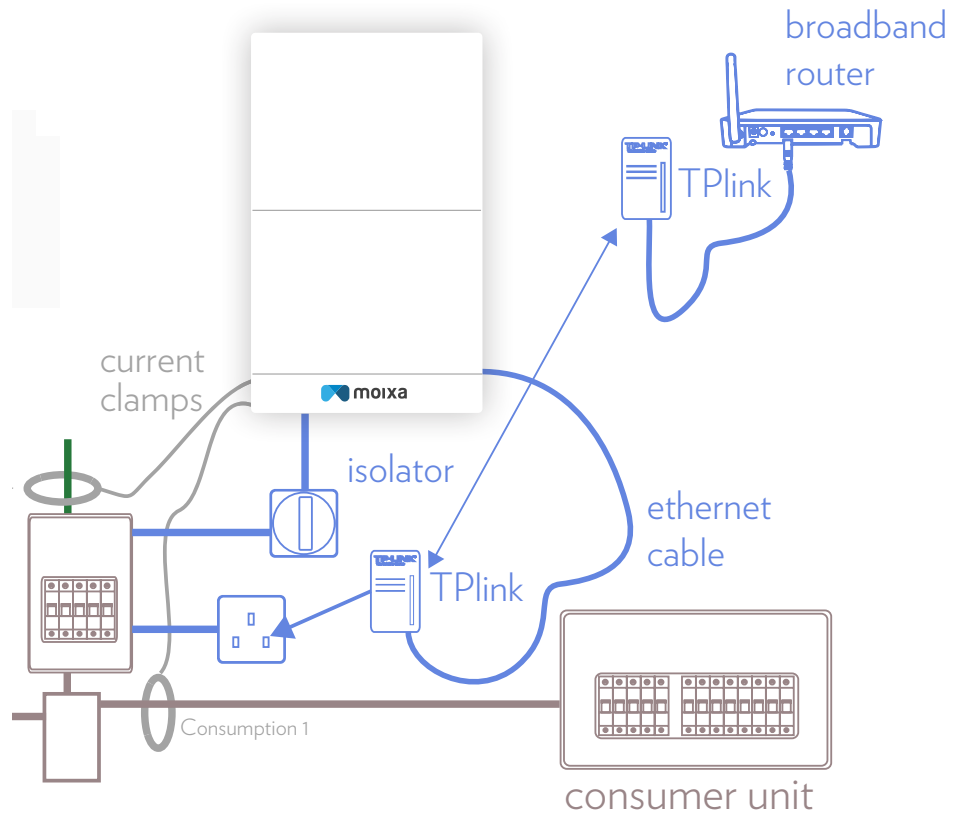
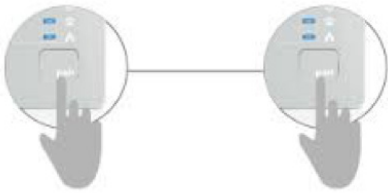
**(right)** Ethernet  
direct cable



## Ethernet via TP link

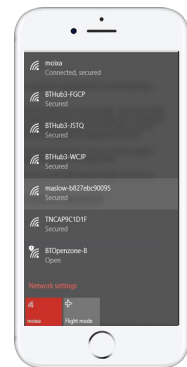
TPlink next to the router use the through plug, and direct into wall socket - reduce chance of TP-link be unplugged

**N.B.** The TP link adaptors may need to be paired, if the lights are not flashing on both units then push buttons.



## WiFi:

- Using your smartphone, search for Moixa's network: "Maslow-serialnumber"
- Password: MaslowPass
- Open your browser, go to: <http://10.74.8.254>
- Input customer's network ID and password
- Click "set"



## Step 4: Commissioning

- Submit the "Moixa: Standard Installation Form" using the Moixa APP
- Ensure the unit is online
- Call Moixa to verify the installation
- Complete customer handover procedure

Call Moixa: **0207 734 1511**