

LoRa Data Transmission Module

Model OBM-IOT-L-AC

User Manual



Owen Brothers Metering UK Ltd

Copyright © 2018 Owen Brothers Metering All Rights Reserved

This manual may not be reproduced, copied, transmitted or transcribed in whole or in part by any means without the expressed written permission of Owen-Brothers.

IMPORTANT DECLARATIONS

1. This document is an instruction manual. Its content will change as product is upgraded without notice. Please contact with Owen Brothers Metering UK Ltd to get the latest product specifications if it is needed.
2. Owen-Brothers shall not be responsible or liable for any damages or injuries caused by improper meter installation and/or operation.
3. Please read this manual carefully before the product is operated, and once you start, you'll be considered to have read this manual and accept all our terms.

Contents

Chapter 1 Product Introduction	1
Chapter 2 Function Overview	1
2.1 Function Description	1
2.2 Technical Parameter	2
2.3 Model Selection	2
2.4 Parameter Configuration	2
Chapter 3 Installation Instruction	4
3.1 Dimension	4
3.2 Terminal Definition	5
Chapter 4 Application Instruction	5
4.1 Application System Examples	5
4.2 Application Areas	6
Chapter 5 After-sales Service	6
Chapter 6 Contact Us	6

Chapter 1 Product Introduction

The LoRa Data Transmission Terminals, Model No.OBM-IOT-L-AC are universal communication interactive equipment which is designed and manufactured by our company based on the LoRa RF chip. It integrates two interfaces of industrial standard RS485 and supports a variety of protocols to realize data transmission between wired and wireless devices. It transmits the data of the wired device to the product and then transmits the data wirelessly through RS485 communication lines.

The product can be widely applied in the IOT, centralized metering and industrial control etc.



Product picture

Chapter 2 Function Overview

2.1 Function Description

- ◆ 2 standard interfaces of RS485, supporting a variety of protocols and communicating with various automatic devices with RS485 interfaces
- ◆ Equipped with LoRa chips SX1278 from Semtech for RF part
- ◆ Transparent transmission mode
- ◆ Wireless ultra-long transmission range up to 8km barrier free
- ◆ Small size, easy to install.
- ◆ Working temperature range: -20°C~70°C, suitable in all kinds of harsh environment
- ◆ Wide operating voltage range with optional multi specifications

2.2 Technical Parameter

Product Parameters

- Power Supply: DC8-36V
- Power Consumption: <1W
- Protocols Supported by RS485: Modbus RTU, DL/T 645 etc.
- RS485 Communication Baud Rates: 1200-115200bps,8N1, 8E1, 8O1
- Installation: Din rail mounted installation

RF parameters

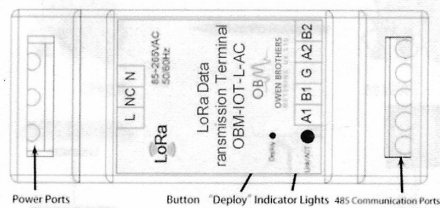
- Working Frequency Range: 410M-525MHz
- ISM Band: 433M
- Antenna Impedance: 50Ω
- Output Power: 18dBm/100mA
- Sensitivity: -139dBm(SF12, broadband125KHz)
- Packet Length Sent: 255bytes
- Packet Length Received: 255bytes
- Communication Range: 6-8km

2.3 Model Selection

Model No.	RS485 Interfaces	Power Supply Voltage	Wireless parameters	
			Working Frequency	Networking Modes
OBM-IOT-L-AC	2	AC85-265V	433MHz	Transparent Transmission

2.4 Parameter Configuration

All the parameters like serial port baud rate, wireless transmission rate etc. of LoRa products developed by our company can be set by the user. The setting steps are as follows:



2.4.1 Wiring

The power ports are connected into power supply of AC85-265V chosen based on the purchased type instead of being chosen the wrong connection. Connect the RS485-1 port of the device to the PC terminal through a RS485 conversion device.

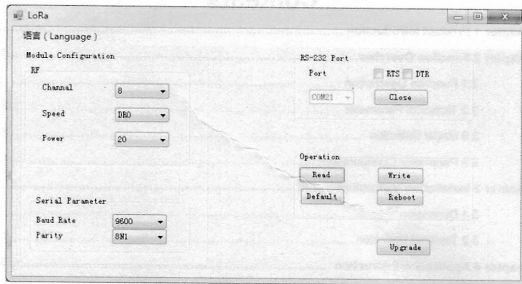
2.4.2 Enter Configuration Mode

Method 1: After wiring is completed, power on and press button "Deploy" longer than 5S to make LoRa device enter the configuration mode. After that, the LINK/ACT indicator lights flash at a fixed frequency (flashing once per second) and release the button.

Method 2: First, press the button "Deploy" to power up the device, which directly enters the configuration mode, and then releases the button. The Link/ACT indicator lights will flash at a fixed frequency (flashing once per second).

2.4.3 Open Software

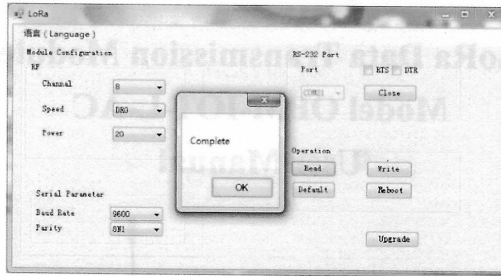
Open the configuration software of "LoRaCFG_v2". Click the "RS-232 Port" on the software interface to select the corresponding COM port and click "Open", as shown in the following figure.



2.4.4 Parameter Configuration

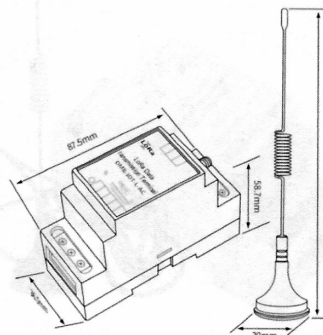
After opening the serial ports, click "Read". Thus it will indicate "Complete". If it indicates "Time Out", please check whether the LoRa device enters the configuration mode. After completing operation, the host computer reads out the current configured parameters.

If you need to modify according parameters, click "Write" and it will indicate "Complete". Click "Read" again to check if configuration is correct. Click "Reboot" to exit configuration mode.



Chapter 3 Installation Instruction

3.1 Dimension

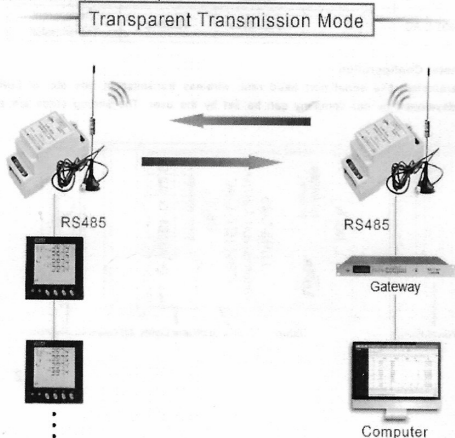


3.2 Terminal Definition

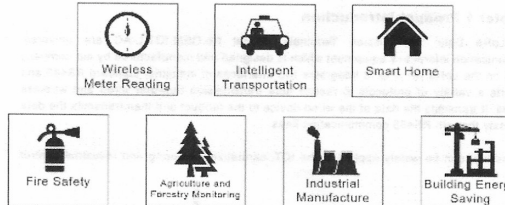
Terminal No.	Definition
L	Line L of Power Input
N	Line N of Power Input
NC	Null
A1	RS485-1 communication interface A
B1	RS485-1 communication interface B
A2	RS485-2 communication interface A
B2	RS485-2 communication interface B
G	Grounding

Chapter 4 Application Instruction

4.1 Application System Example



4.2 Application Areas



Chapter 5 After-sales Service

Product Warranty

- The product warranty period is one year.
- The company is responsible for free maintenance or exchange within one-year warranty period.
- The cost of the components and freight shall be charged for improper meter installation and/or operation.
- Over the warranty period, part of the maintenance cost according to actual situation will be charged.

Service Guarantee

- Product technical consulting and quality complaints will be replied within 12 hours.
- Solutions for quality complaints will be provided within 24 hours.
- Except statutory holidays and force majeure.

Chapter 6 Contact Us

Owen Brothers Metering UK Ltd
 New Phoenix Works
 Glen Trading Estate
 Wellyhole Street
 Oldham OL4 3BF
 ENGLAND
 Tel. +44 161 624 6211
 Fax. 0870 622 0424