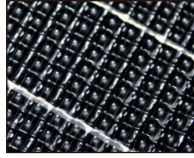
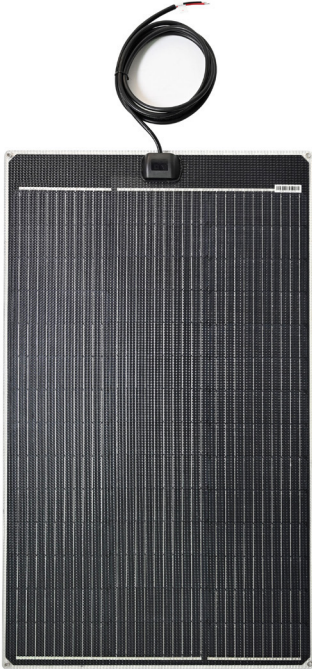
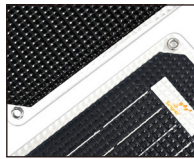


Product Details

LIGHTWEIGHT SOLAR PANEL LEE-M2-120W-B



Anti-Slip Surface

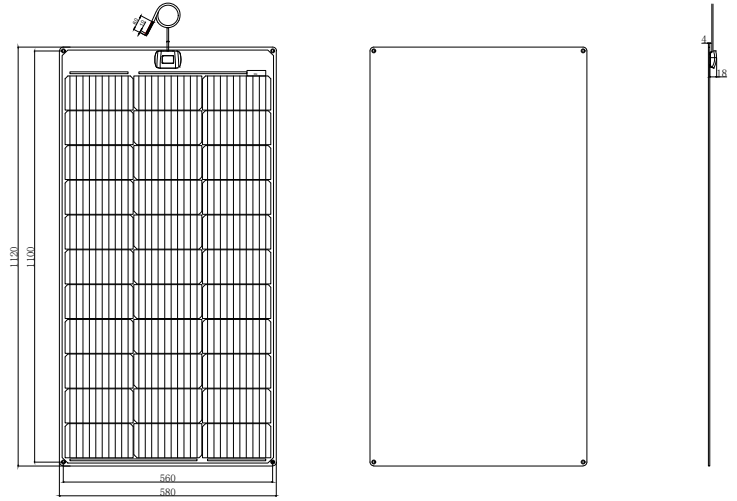


Bifacial ETFE Coating

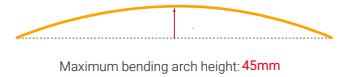
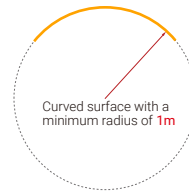


Junction Box

Module Diagram



Solar panel bending diagram



Solar panel

Electrical Characteristics

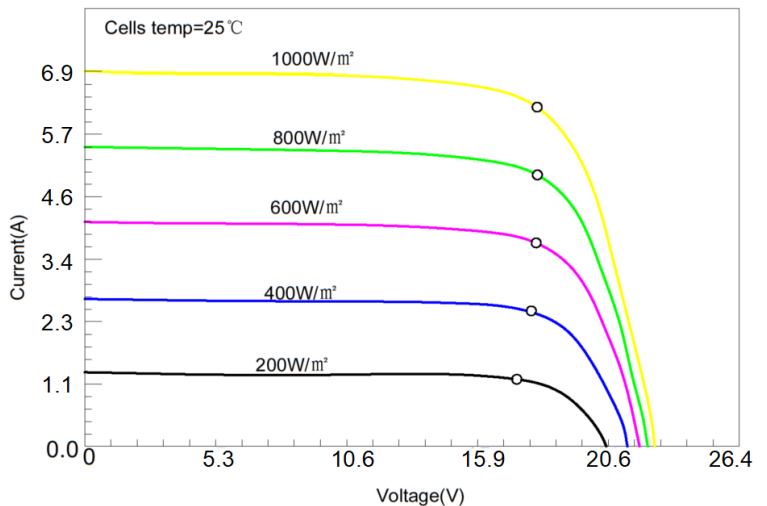
Maximum power(Pmax)	120W
Open-circuit voltage(Voc)	22.0V
Voltage at Pmax(Vmp)	18.8V
Short-circuit current(Isc)	6.70A
Current at Pmax(Imp)	6.39A
Cells Efficiency(%)	22.7%
The maximum system voltage	200V DC(IEC)
Power temperature coefficient	-0.38%/°C
Voltage temperature coefficient	-0.36%/°C
Current temperature coefficient	0.07%/°C
Output power tolerance	±3%
Operating Temperature	-20°C~75°C

Specifications

Solar cell brand	A grade mono solar cells 182mm
No.of cells and connections	42(3*11)
Module dimension	1120*580*4mm
Weight	4.1KG
Output cable	JB (2*bypass diodes) + 3000/2*2.5mm ² cable
Waterproof	IP67
Certifications	CE, ROHS, FCC
Maximum bending arch height	45mm
Warranty	3-year warranty, 15-year service life

Product Introduction

Sungold LEE-series, semi-rigid lightweight solar panel, is the upgraded version of the LE series. Compared with the old version, the LEE-series uses Japan-imported ETFE material on both the front and back sides. Special material built-in not only flame-retardant, but also can protect the solar cells from external impact. Besides, its special grain design can reduce the reflection of light so that to absorb more sunlight. The one outlet cable makes it easy for installation, the inside special material protection as well as the ETFE full coverage design, make it more suitable for extreme application, especially marine environment.



*SUNGOLD offer customize service, please refer to our website or ask SUNGOLD workers for more sizes and the latest parameters.