

Cheetah MX HC 60MB 320-340 Watt

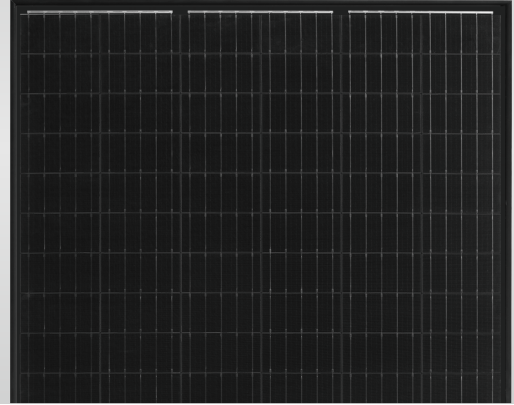
MONO PERC MODULE
Power Optimized

Positive power tolerance of 0~+3%

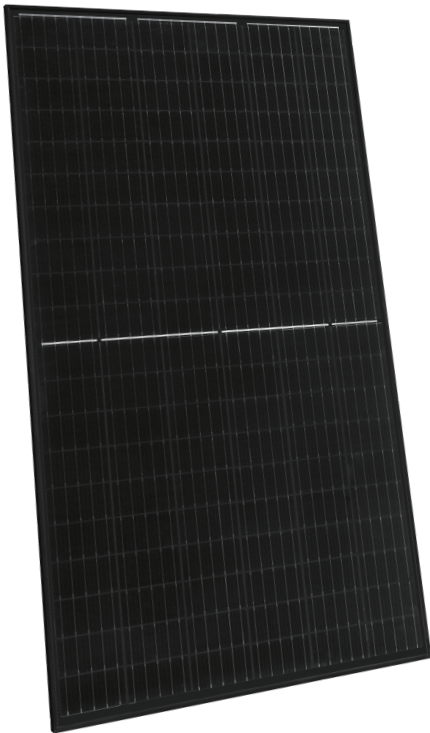
ISO9001:2015, ISO14001:2015, OHSAS18001
certified factory.
IEC61215, IEC61730, UL1741 certified products.



PERC



KEY FEATURES



Higher Power Output

Decrease in current loss yields higher module efficiency



Voltage Limiting Feature

33.6V for 60-cell modules allows for longer strings, reduces overall BOS



Shade Tolerance

More Shade tolerance due to twin arrays and cell string MPPT



Built-in Submodule Optimizer

No additional electronics or hardware required; allows for simple installation

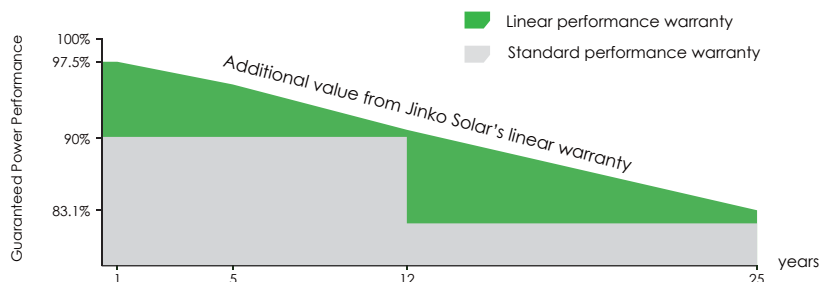


PID Free

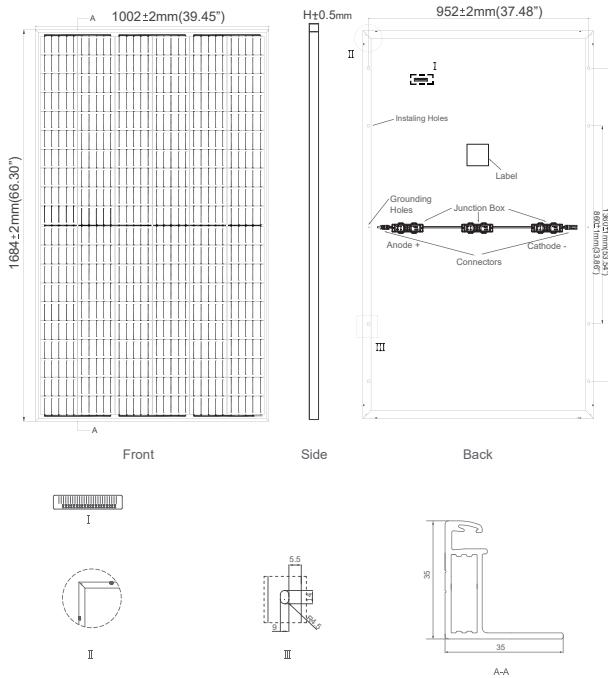
Reinforced cell prevents potential induced degradation

LINEAR PERFORMANCE WARRANTY

12 Year Product Warranty • 25 Year Linear Power Warranty



Engineering Drawings



Packaging Configurations

(Two pallets =One stack)

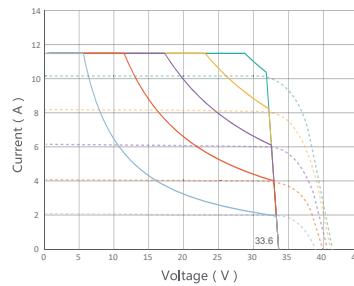
30pcs/pallet, 60pcs/stack, 780pcs/40'HQ Container

(Two pallets =One stack)

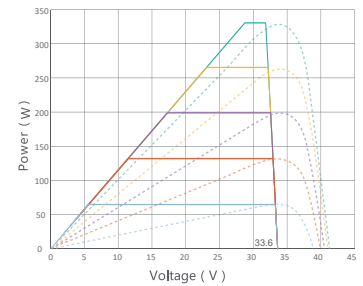
31pcs/pallet, 62pcs/stack, 806pcs/40'HQ Container

Electrical Performance & Temperature Dependence

MPPT Mode
Simulated Real Behavior
(325W)



MPPT Mode
Simulated Real Behavior
(325W)



Mechanical Characteristics

Cell Type	Mono PERC	158.75×158.75mm
No. of Cells	120	(6×20)
Dimensions	1684×1002×35mm (66.30×39.45×1.38 inch)	
Weight	19.0 kg (41.9 lbs.)	
Front Glass	3.2mm, Anti-reflection Coating, High Transmission, Low Iron, Tempered Glass	
Frame	Anodized Aluminium Alloy	
Junction Box	IP67 Rated	
Output Cables	TÜV 1x4.0mm ² , (+): 290mm, (-): 145mm or Customized Length	

SPECIFICATIONS

Module Type	JKMS320M-60HB-MX3		JKMS325M-60HB-MX3		JKMS330M-60HB-MX3		JKMS335M-60HB-MX3		JKMS340M-60HB-MX3	
	STC	NOCT	STC	NOCT	STC	NOCT	STC	NOCT	STC	NOCT
Maximum Power (Pmax)	320Wp	238Wp	325Wp	242Wp	330Wp	246Wp	335Wp	250Wp	340Wp	253Wp
Maximum Power Voltage (Vmp)	33.4V	31.4V	33.6V	31.6V	33.8V	31.8V	34.0V	32.0V	34.2V	32.2V
Maximum Power Current (Imp)	9.59A	7.65A	9.68A	7.66A	9.77A	7.74A	9.87A	7.82A	9.96A	7.86A
Open-circuit Voltage (Voc)	40.9V	37.8V	41.1V	38.0V	41.3V	38.2V	41.5V	38.4V	41.7V	38.6V
Short-circuit Current (Isc)	10.31A	8.44A	10.50A	8.54A	10.61A	8.65A	10.73A	8.74A	10.82A	8.86A
Module Efficiency STC (%)	18.96%		19.26%		19.56%		19.85%		20.15%	
Maximum series fuse rating	15A									
Operating Temperature(°C)	-40°C~+85°C									
Maximum System Voltage	1000VDC (UL and IEC)									
Power Tolerance	0~+3%									
Temperature Coefficients of Pmax	-0.36%/°C									
Temperature Coefficients of Voc	-0.28%/°C for VOC ≤ 33.6V 0.0% C for VOC >33.6V									
Temperature Coefficients of Isc	0.048%/°C									
Nominal Operating Cell Temperature (NOCT)	45±2°C									

* STC: Irradiance 1000W/m²

Cell Temperature 25°C

AM=1.5

NOCT: Irradiance 800W/m²

Ambient Temperature 20°C

AM=1.5

Wind Speed 1m/s

* Power measurement tolerance: ± 3%