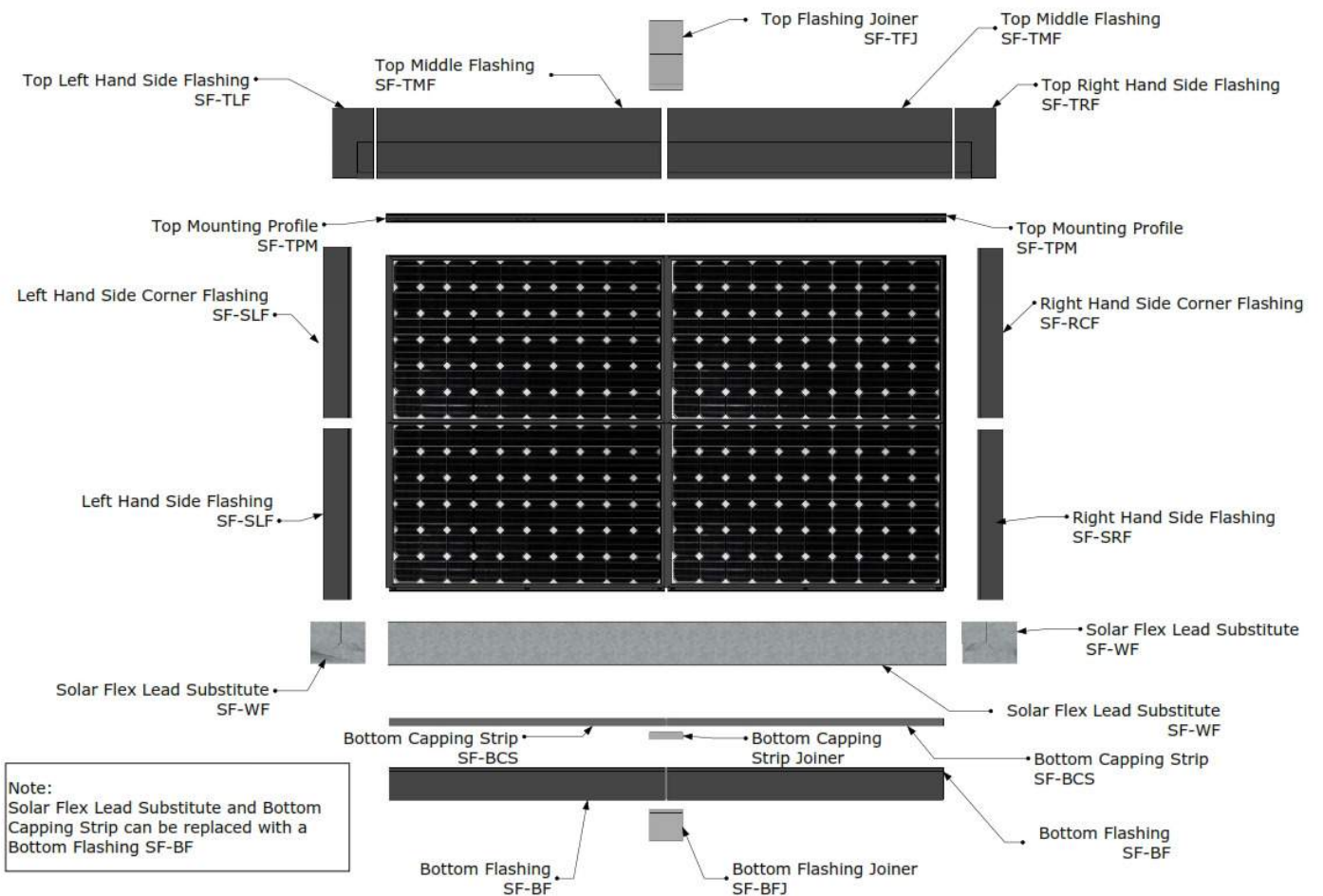


Instruction manual V8

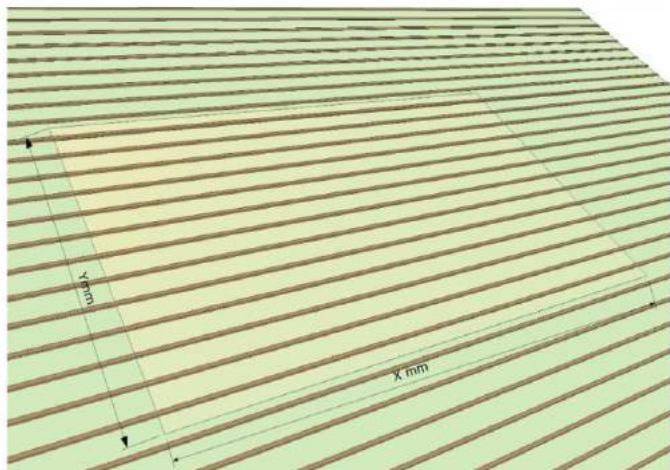
Installation instruction videos; www.solfit.co.uk

On site installer installation support; 07775897980

SolFit component parts

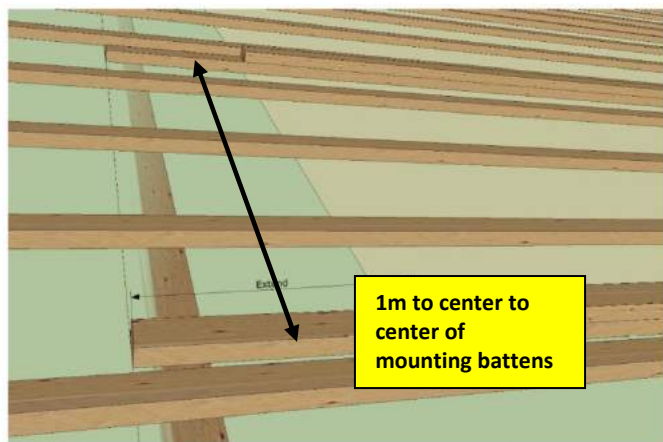


Solfit Installation Manual V8



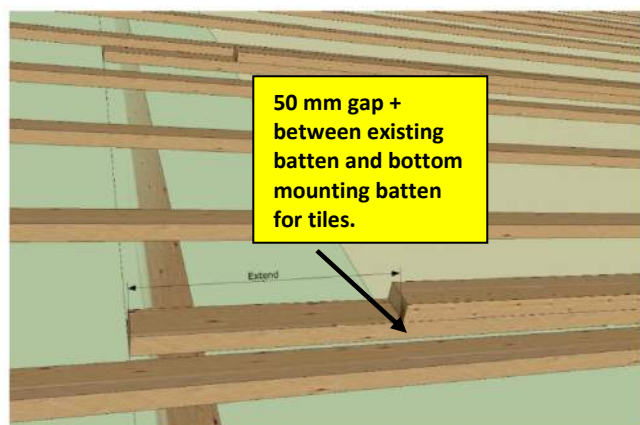
1) Measure size of array

- X (width) = 1.7m x nom of panels
- Y = (height) 1m x number of panels
- Side flashing = 150 mm
- Top flashing = 270mm
- Bottom flashing = 150mm
- Allow space for 1 x tile or slate at bottom of array or 150mm if using metal bottom flashing. If using lead or lead substitute you can take the array to the bottom flashing of the roof into gutter.



2) Fit mounting battens

- **Use only 25mm x 50mm battens**
- Measure the height of array from bottom of the array up the roof,
- Fit double mounting battens at 1 metre spacing's.
- Upper flashing support single batten 250mm from top mounting batten
- Secure battens with 50mm screws



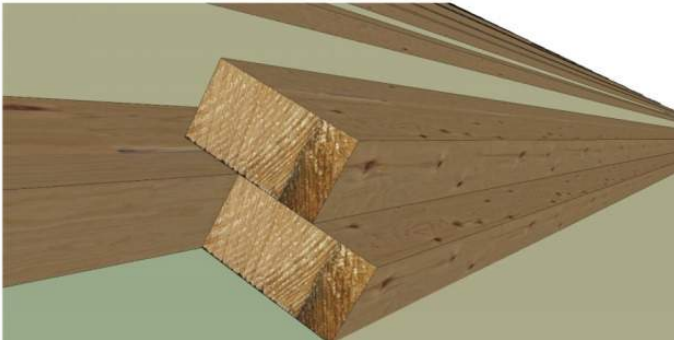
3) 50mm gap between existing & mounting batten

- 50mm gap left between lower existing tiling batten and the lowest panel mounting batten to allow space for the tile nib, **No gap required for slate.**
- **TIP; Use a 25mm x 50mm batten as a spacer**
- No gap required for slates
- Fix lower batten with 1 x 50mm screw per rafter



4) Measuring gap between battens

- To space mounting battens at 1m spacing's, measuring sticks can be very useful, be sure to cut them square and exact for 50mm batten. Length = 950mm



5) Spanning existing battens

- If 1m spaced mounting batten hits an existing batten. Span existing batten mounting battens 1m spacing centre-centre. Fix lower with 1x 50mm screw per rafter
- Fix upper batten with 1 x 50mm screw, 1 x 500m approx.



6) Fit Top Mounting Bars

- **Very Important! Fit 1 short end mounting profile per array 30mm shorter than the others**
- Fix top mounting bars straight & parallel
- Bottom edge flush with bottom of top batten
- Secure with 6 screws per bar



7) Cut top mounting batten

- Cut top mounting batten flush with LHS end of mounting profile



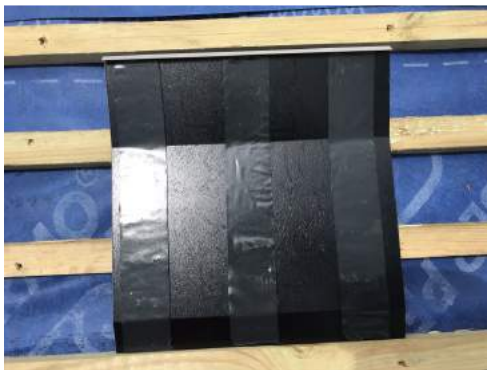
8) Cut top mounting batten

- Cut batten flush with the RHS and LHS edge of mounting profile



12) Additional top flashing support batten

- Additional top flashing batten 270mm approx. to be fitted if there is not one already in position by good fortune.



10) Fit top flashing joiners

- Attach three strips of Butyl tape to top flashing joiner and attach joiner to RHS of top flashing before fitting top flashing



11) Top flashing joiner

- Secure top flashing joiner on to top flashing before fitting into position
- Fit top flashing flush with left hand edge of top mounting profiles



10) Fit and stick next top flashing to RHS

- Hook the flashing around the bottom of the mounting profile first . Beware the Butyl tape is very sticky !



9) Fix top flashing

- Fix top flashings with Tec screws into top flashing batten using M8 tec screw bit



9) Fix top flashing

- Fix top flashings with Tec screws into top flashing support batten



12) Remove EPDM seal

- **Very Important!** For top row of panels remove EPDM seal before fitting panel.



13) Fitting panel First Panel.

Very Important!!! Hang the panel 2cm+ over the LHS of the top mounting profile. Other wise the LHS flashing wont slide into position

Push panel into tight and parallel into position and secure with 6 screws per panel.



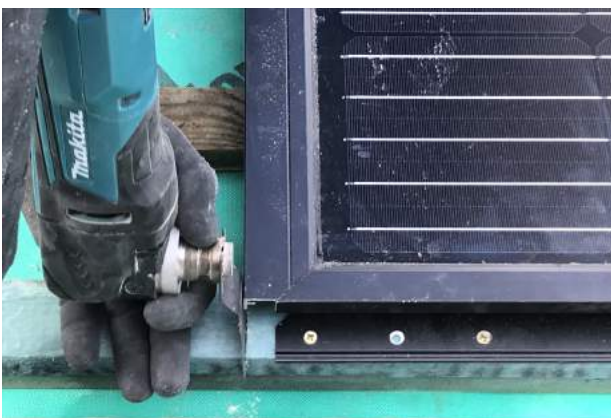
14) Fit top row of panels

- Fit panel left to right
- Secure panels in position with 6 x 4-gauge screws per panel



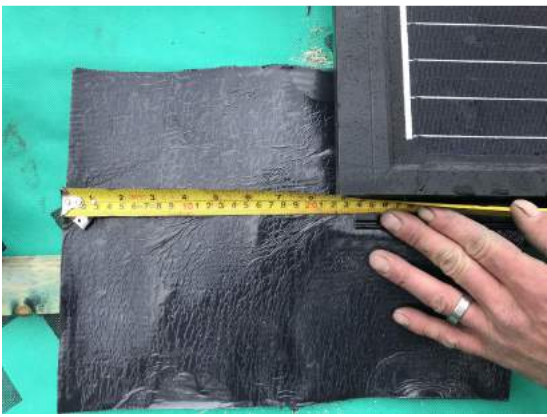
15) Fit 2nd row of panels left to right

- **Don't forget to connect DC cables**
- Secure panels in position with 6 x 4 gage screws per panel



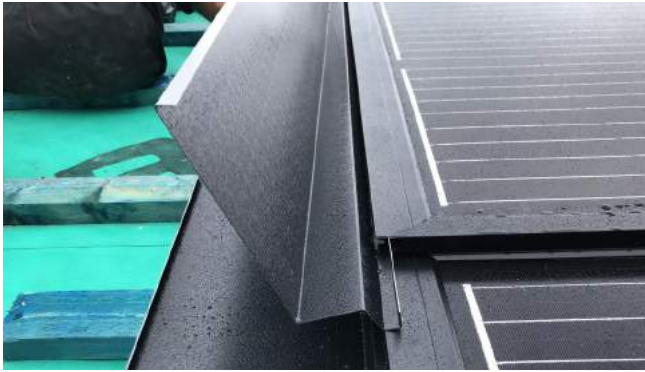
16) Cut all battens flush with panels

- **Important. Cut all top battens flush with panel edge on LHS and RHS of array with edge of panels before fitting flashing. This allows flashings to fit in place.**



15) Fit bottom corner flashing

- Fit bottom corner flashings before fitting side flashing
- Lead or lead substitute can be used
- Height below array 150mm approx. so hidden when bottom flashing fitted
- Under lap panel by minimum of 100mm



16) Fit LHS side flashing

- Fit LHS flashing
- Fit LHS flashings until bottom edge is parallel with bottom edge of panel
- Secure with flashing clips or tec screws



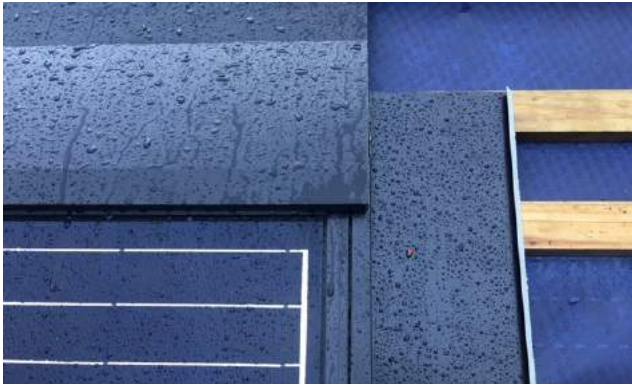
17) Fit LHS side flashing

- Fit LHS Flashing so flush with bottom of panel



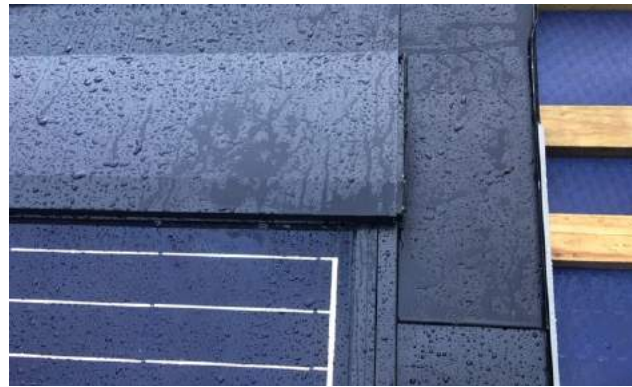
18) Fit top LHS corner flashing

- LHS flashing slid into position under top flashing
- Top corner flashing pushed into position under top flashing and secured with clips or Tec screws



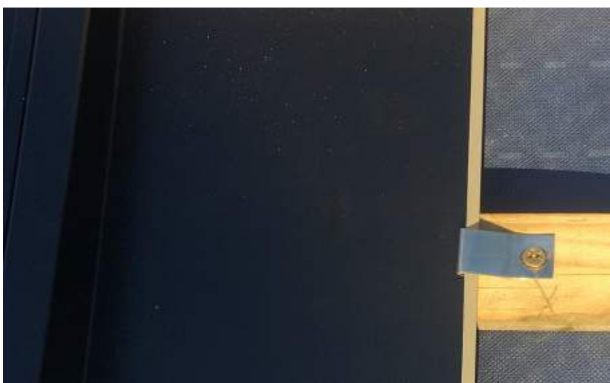
19) Fit RHS Flashing

- Slide RHS flashings into position from bottom of panel.
- **If panel is too close to scaffold or gutter to slide flashing into position. Slide flashing on to panel before fitting.**



20) Fit top RHS corner flashing

- Fit RHS corner flashing sliding under top flashing. Push in tight into position. Secure with clip or Tek screw



21) Secure LHS and RHS flashings

- Secure LHS and RHS flashings with clips & 20mm screws or Tek screws



22) Fit Bottom flashing hooks

- Fit bottom flashing hooks, 2 per panel, use 5 Gauge screw, hook facing upwards



23) Fit 2 Bottom flashing hooks per panel



24) Fit bottom flashing & internal flashing joiners

- Part push in bottom flashings and slide in bottom flashing joiner, no need for silicone



25) Fit bottom flashing

- Fit bottom flashings and push into position
- **Bottom flashing will be removed by roofers to fix tiles below flashing and will need to be replaced. Ensure roofers know to push bottom flashing in tight and secure with hooks**



26) Pull flashing clip

- Pull flashing clips over bottom flashing edge to ensure tightness and security of bottom flashing.



27) Fit expandable foam tape

- Fit expandable foam top around top and side flashings when using tiles

Bottom capping strips & lead or lead substitute

A metal bottom flashing alternative



1) When using lead or lead substitute and capping strips

- Fit lead flashing the full length of the array between bottom profile and double batten. **Flashing Length 200mm past end of panel on LHS & RHS**
- **Minimum of 100mm underlap under panel**
- Stretch bottom capping strips to make tight, fit internal joiners, run a bead of silicone to secure.
- fit and push into position to cover and

Trouble Shooting Problems



Panels out of line

If panels move out of line with panels above, this can cause issues with slide flashing. There is about 8mm of tolerance on RHS

- To rectify remove lower panels and reset in line with row above.



Panels 'saw tothing'

This can be caused by panels not being pushed completely in position or the top mounting bars not being straight or panels not being manufactured perfectly square.

- To rectify; loosening panel screws and push into correct position
- Reduce saw tooth effect by lowering RHS panel closer into position.

Installation manual to fit external and internal flashings

External RHS Flashings

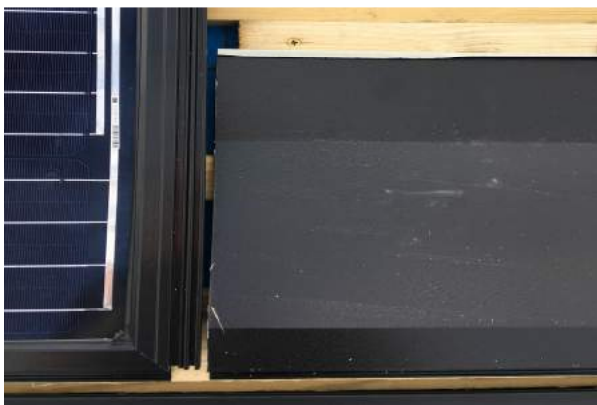


To Fit an external RHS flashing as shown



1) Cut mounting bar

- Cut Top mounting bar by 50mm



2) Fit mounting bar and top flashing

- Fix top mounting bar allowing 5mm approx. gap from next panel
- Fix top flashing as shown
- Flatten return 150mm from edge to allow side flashing to sit flush



3) Fit RHS External corner flashing

- **Run vertical length of Butyl tape on RHS, underside of External side flashing**
- **Over lay external RHS flashing over top flashing, remember to slide the flashing into position from the bottom**
- **Secure flashing with clips**



4) Finish Array

- **Finishing the array, Carry on fitting rest of panels standard and as per standard instruction manual**

External LHS Flashing



Fitting an External LHS flashing as shown



1) Cut Top mounting bar

- **Cut mounting profile by 5cm, allow a 5mm gap between the mounting bar and the next panel.**



2) Fix top mounting bar

- **Fix top mounting bar next to bottom bar of panel as shown**



3) Fix top mounting bar

- **Fix top mounting bar next to bottom bar of panel as shown**



4)

- Flatten the return of the top flashing 150mm from edge and fix with Tek screws or clips
- Fit length of butyl tape un LHS of underside of external side flashing
- Fit RHS external flashing and secure with clips or Tek screws

RHS Internal corner flashing



1) Slide RHS flashing into position

- Secure with flashing clips



2) Fit Internal corner joining plate



4) Fit Internal corner joining plate

- Secure with butyl tape



5) seal with strip of butyl tape



6) Fit Bottom flashing

