

# F-ROOF

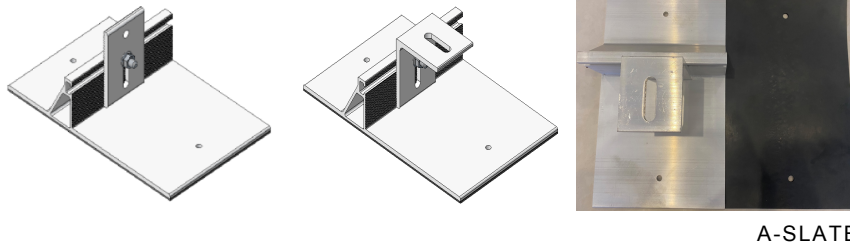
SLATE ROOF MOUNTING SYSTEM



**INSTALLATION GUIDE**



# Natural & Artificial Slate



## INSTALLATION GUIDE

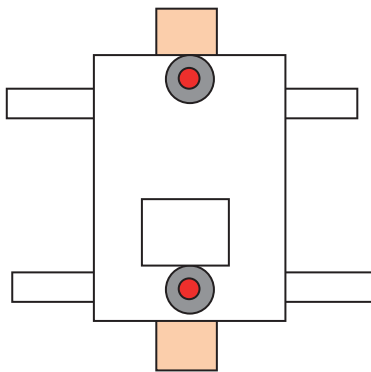
Allow a maximum of 1.2m between tile brackets depending on site conditions.

●  
6.3\*100mm wooden  
screw with the washer

●  
Top: EDPM Washer  
Bottom: CT1 Sealant

### RAFTER PSN CENTRAL

Sealed with CT1. See above



Pre drill the base plate with a 7mm drill.

Pre drill the slate covering with a 10mm drill.

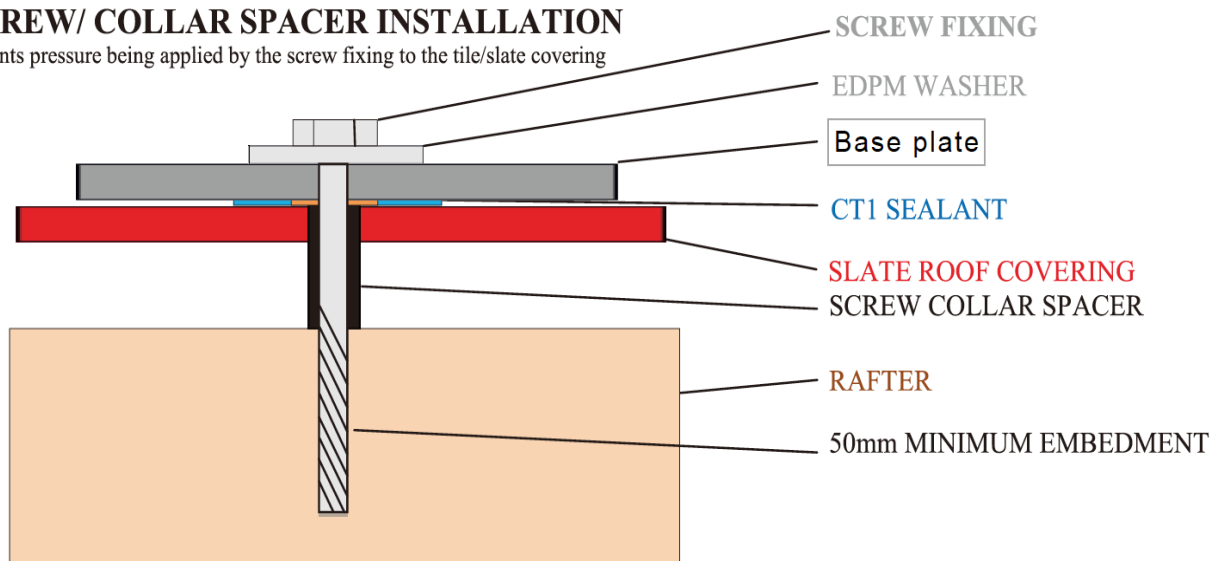
Apply CT1 Sealant to the 7mm holes, bottom of the base.

Ensure slate surface is clean of dirt, dust, alge and moss etc.

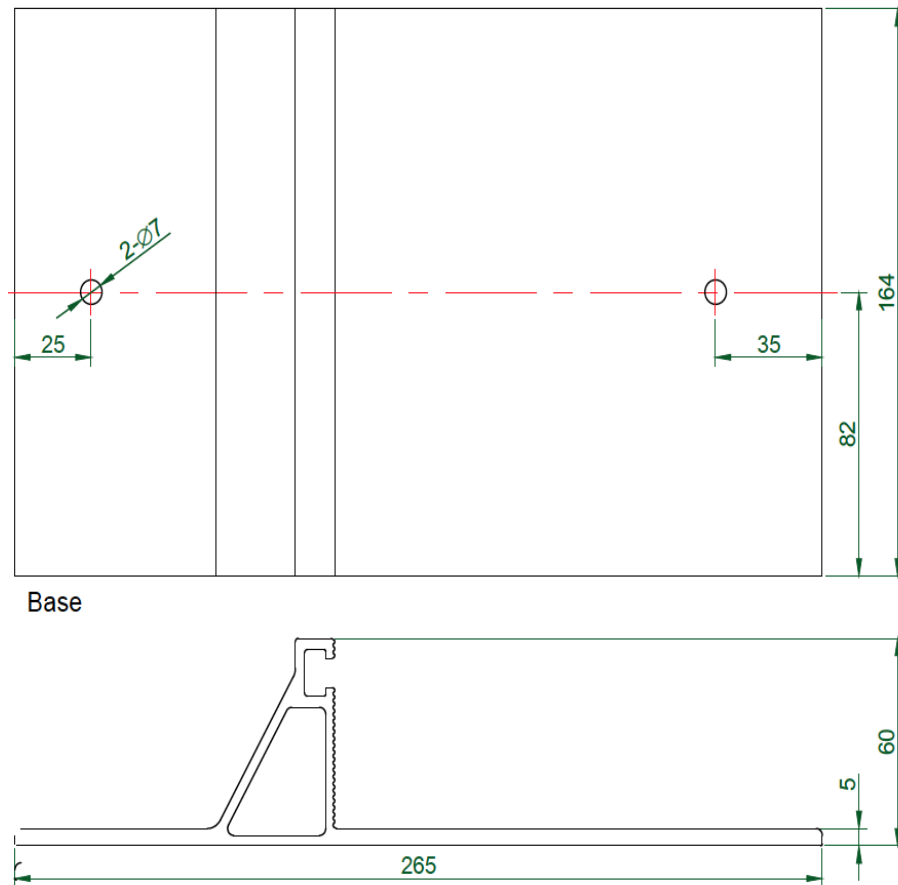
Apply CT1 Sealant. **DO NOT USE ANY OTHER SEALANT**

### SCREW/ COLLAR SPACER INSTALLATION

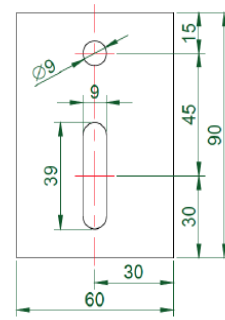
Prevents pressure being applied by the screw fixing to the tile/slate covering



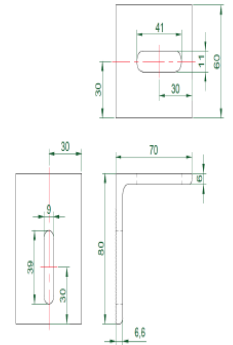
# DRAWING AND BOM OF A-SLATE AS FOLLOW:



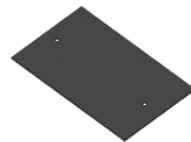
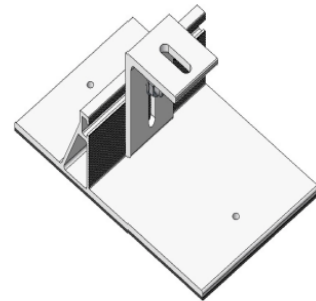
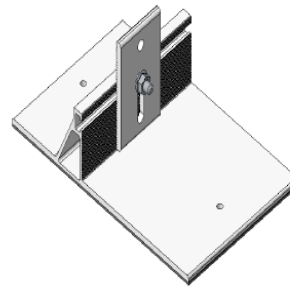
Base



I Bracket Part



L Bracket Part

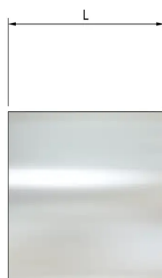
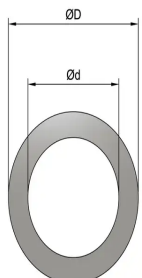


Rubber Pad

BOM			
Name	Spec.	Material	Qty
Base	164*265*60mm	Aluminum 6005-T5	1 pcs
L-Bracket	60*70*80mm	Aluminum 6005-T5	1pcs
Rubber Pad	164*265mm	EPDM	1pcs
Screw	St6.3*100	Steel 10B21	2pcs

# THE INFORMATION OF SPACER AS FOLLOWS:

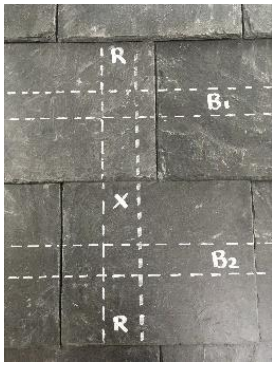
## 10mm X 8.2mm X 20mm Spacers - Black Nylon Technical Specification



Finish	Black
Inside diameter (B)	8.2mm
Length (L)	20mm
Manufacturing Standard	Not Standardised
Material	Nylon
Material Specification	UL94 HB Nylon 6, 25% Glass Filled RMS-173
Metric or Imperial?	Metric
Outside Diameter (D)	10mm

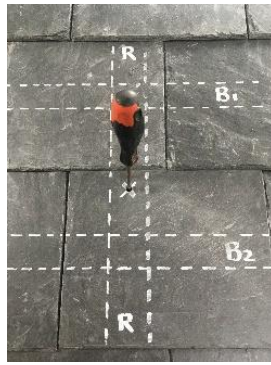


**PROCEED WITH INSTALL OF A-SLATE AS FOLLOWS:**



1

After locating the battens, B1 & B2 and rafter R positions. Mark the test hole position X as shown, away from the battens B1 and B2



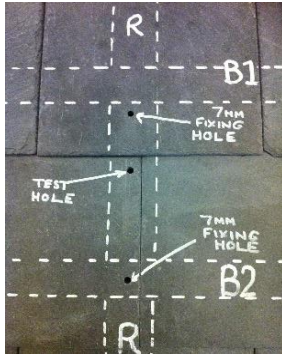
2

Drill out a 7mm test hole Using a screw driver, gently. confirm the rafters central position.



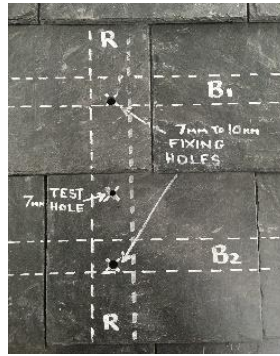
3

Place aluminum bases in the fixing position as shown. Hold and drill through the 2 marked fixing points X using a 7mm tile drill enough to mark the slate surfaces.



4

Drill out the two marked fixing hole positions with a 7mm drill.



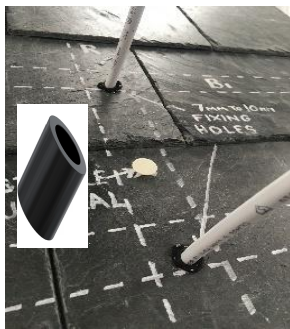
5

Drill out the 7mm fixing holes to 10mm. Not the test hole.



6

**Apply CT1 sealant into and around the fixing holes and test hole**



7

Insert spacers supplied into both fixing holes to be level with the slates surface.



8

**Apply CT1 sealant around the bottom of two fixing holes of the aluminum bases.**



9

Put the rubber pad under the aluminum bases and fix the aluminum brackets into place using 2 x 6.3\*100mm wooden screw, then **Apply CT1 sealant around the top of 2 wooden screws again.**