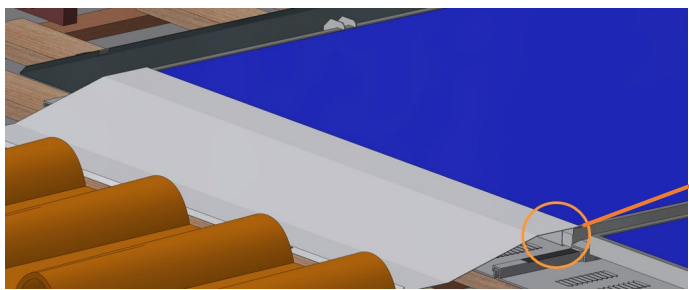
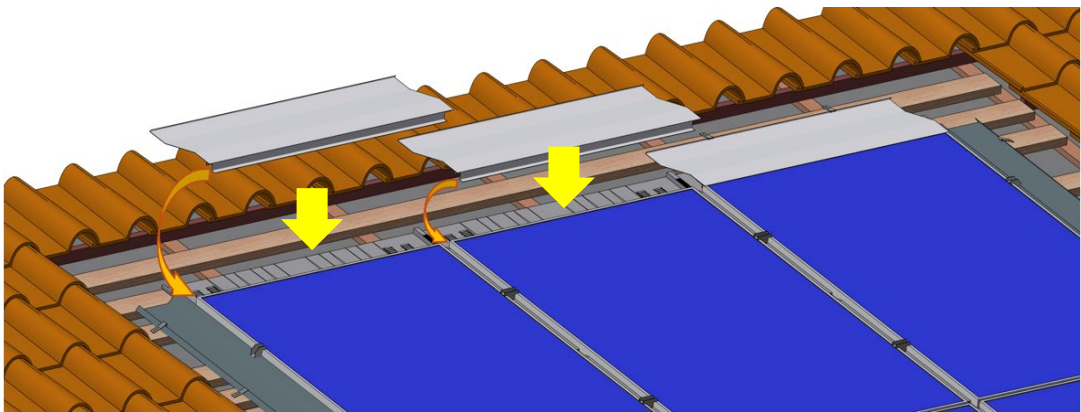


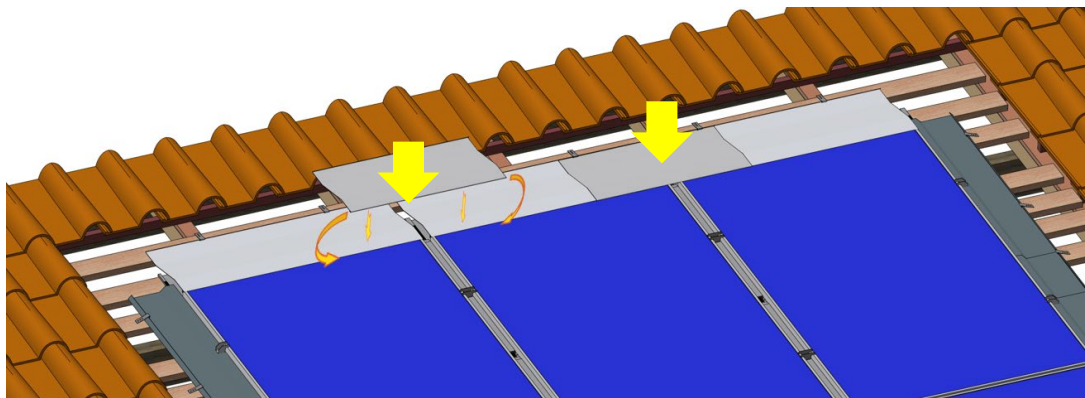
# Installation guidance portrait top flashing 30mm

*Only for module thickness = 30mm*

- 1
- Fit one top center flashing per column.  
Interlock it with the pv panel.



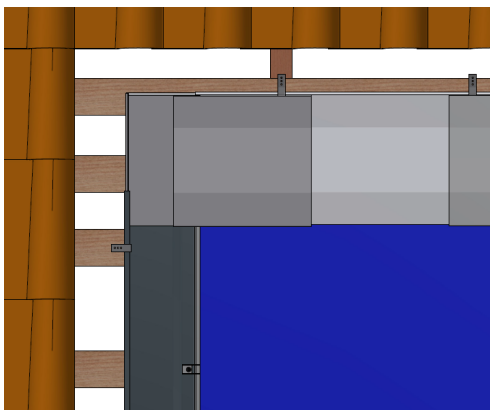
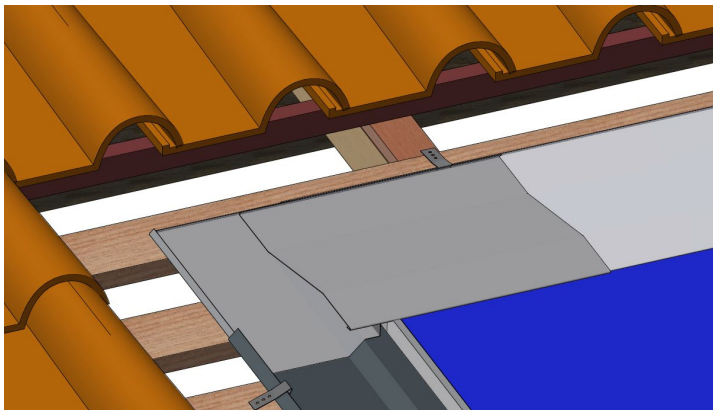
- 2
- Add one top junction flashing between each top center flashing.  
Interlock those pieces together.



# Installation guidance top flashing 30mm

*Only for module thickness = 30mm*

- 3
- Add for each corner side – top left corner & top right corner flashing.  
Interlock the corner pieces with the lateral flashing and the top center flashing.



- 4
- Fix each flashing with at least 2 flashings hooks.



TRAINING



TOOLS AND CALCULATION



HELP CENTER



DOCUMENTATIONS



CONNECTOR  
GSE Intégration  
THE INSTALLER'S BEST FRIEND

155-159 rue du Docteur Bauer - 93400 Saint-Ouen - France

[www.gseintegration.com](http://www.gseintegration.com)

