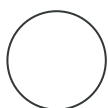


TRUNKING

TECHNICAL SPECIFICATIONS:

- Stiff, shockproof, anti-UVA PVC, white or grey, recyclable
- Sharp-edged bottom
- Pre-punched slots for wall mounting
- Prepared for insertion of the mini pumps Easy Flow, Easy One, Aqua Split (only model T 75-OPT)
- Central closure with patented accidental anti-release
- Rounded cover
- Bar length 2 m
- Paintable
- Operating temperature -20°C / +60°C



WHITE
RAL 9010



BLACK
RAL 9005



ANTHRACITE
RAL 7016



STRAIGHT DUCT



OULET COVER



OUTSIDE CORNER ELBOW



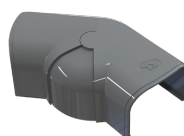
TRUNKING TEE



INTERNAL ELBOW



90 DEG FLAT ELBOW



45 - 90 DEG JOINTED ELBOW



COUPLING