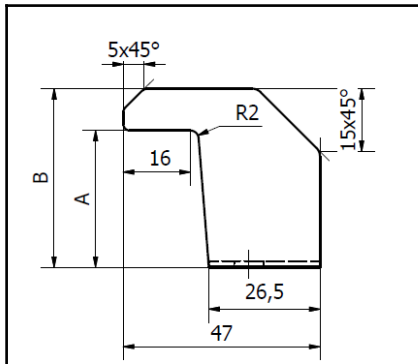


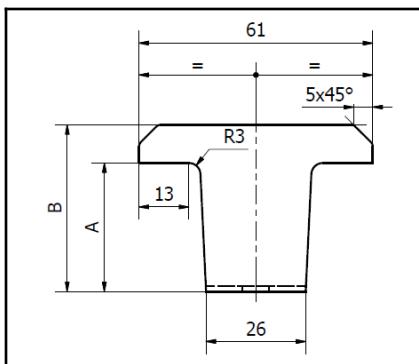
Clamps characteristics

➤ End clamps



Description	A (mm)	B (mm)
End Clamp H16	17,8	27,8
End Clamp H19	20,8	30,8
End Clamp H21	22,8	32,8
End Clamp H23	24,8	34,8
End Clamp H27	28,8	38,8
End Clamp H31	32,8	42,8

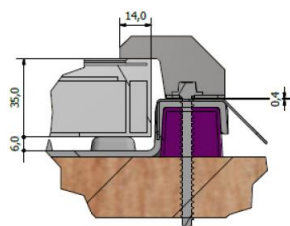
➤ Middle clamps



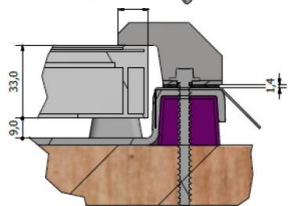
Description	A (mm)	B (mm)
Middle Clamp H16	18,6	28,6
Middle Clamp H19	21,6	31,6
Middle Clamp H21	23,6	33,6
Middle Clamp H23	25,6	35,6
Middle Clamp H27	29,6	39,6
Middle Clamp H31	33,6	43,6

➤ Relation to module thickness

- Standard :



- « P33 » :



Clamps Size	Module thickness (mm)	
	GSE In-Roof Standard frames	GSE In-Roof « P33 » frames
H16	35 mm	32-33 mm
H19	38 mm	35 mm
H21	40 mm	37-38 mm
H23	42 mm	40 mm
H27	45-46 mm	44-45 mm
H31	50 mm	48 mm