

# GSE Intégration

## GSE In-Roof – Universal kit

Adaptation of the top flashing parts

Présenté le : 30/10/19

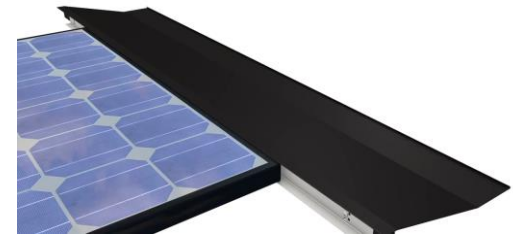
# Adaptation of the top flashing parts

## ➤ Purpose

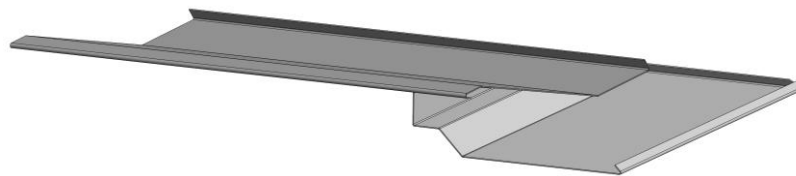
- Use of top flashing parts with 35mm PV modules

## ➤ Top flashing

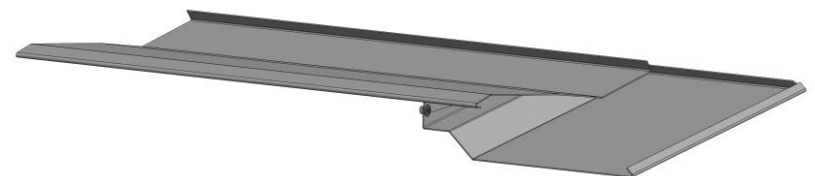
- Adjust the corner to the thickness of the module



## ➤ Angle flashing



40 mm



31-35 mm

# Adaptation of the top flashing parts

## ➤ Adaptation of the angle flashing for 31-35 mm

