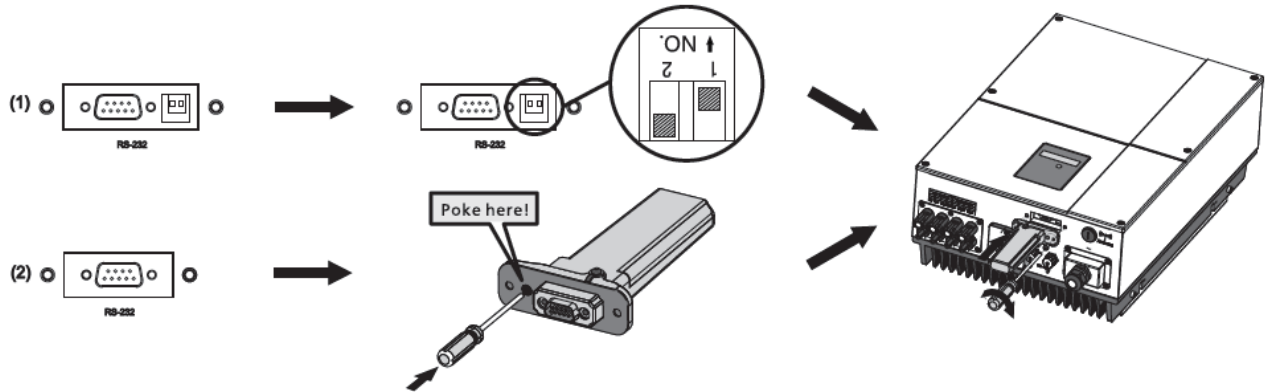


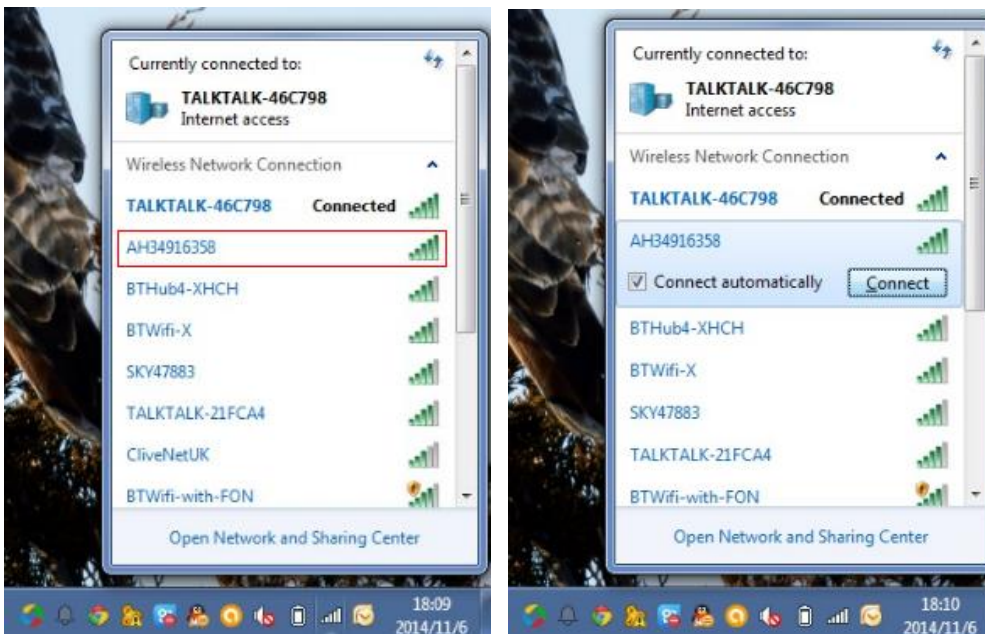
WIFI Module setup guide

How to set up the Wifi dongle?

1. Plug Wifi module to the RS232 port of the inverter or SP2000/SP1000. If the RS232 port has DIP switch, DIP1 should be set to 1;



2. Connect to the wireless network emitted by the Wifi module using your computer, the network name/SSID is the serial number of the Wifi dongle, default password is 12345678.
 - a. Click on the signal icon on desktop of your computer and click the SSID of the Wifi dongle(in red), then click the **“Connect”** button;



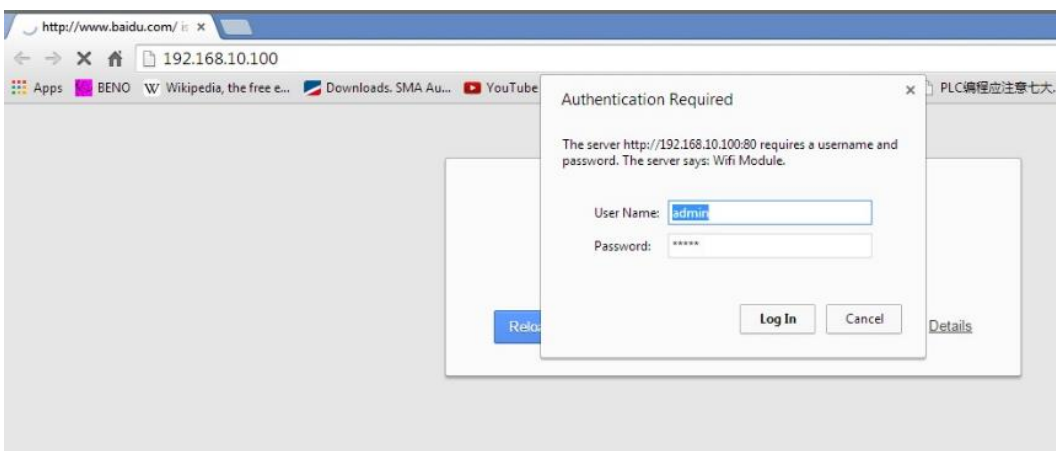
- b. type in the default password(12345678) of the wireless network of the Wifi dongle, and click **“OK”**;

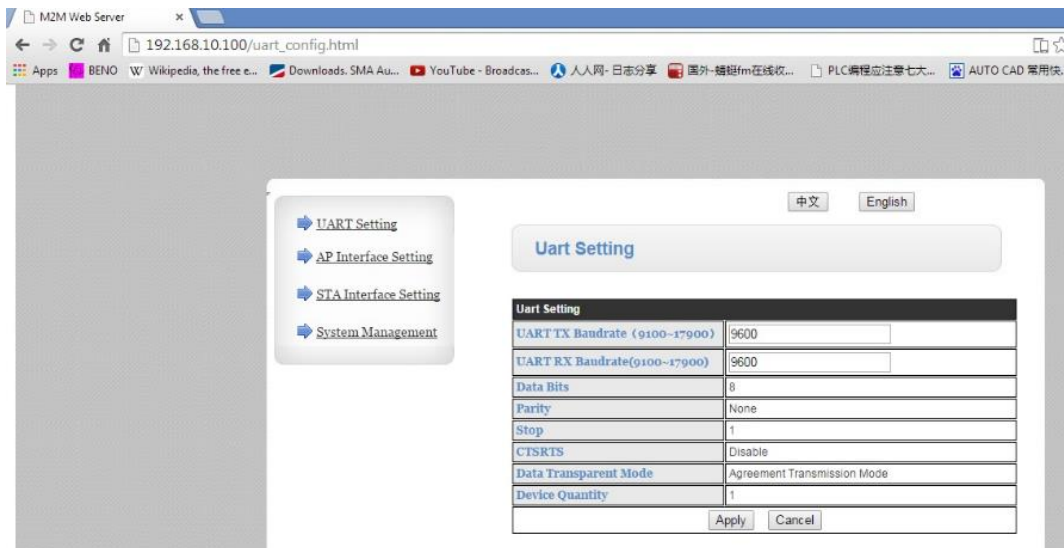


c. Then your laptop will be successfully connected to the Wifi dongle.

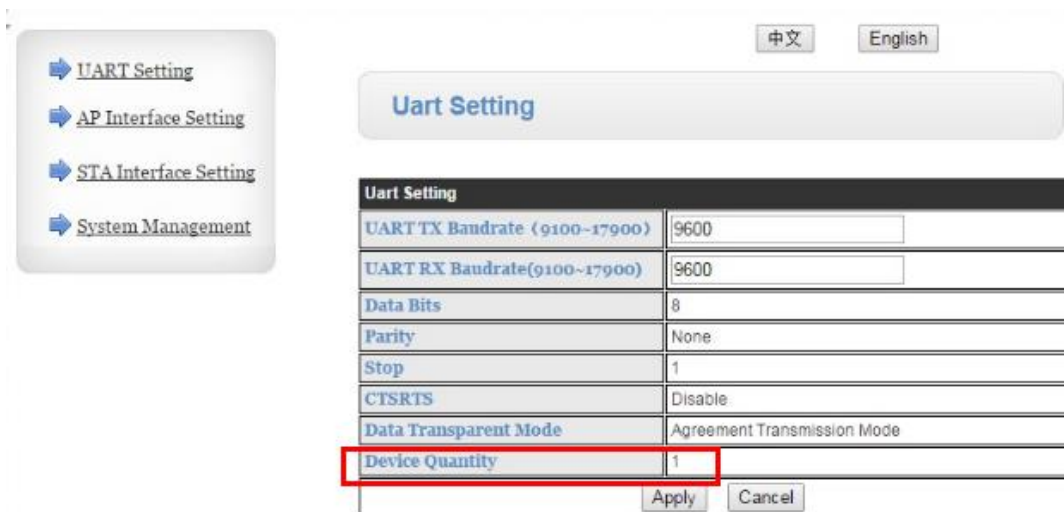


3. After the connection is successfully established, open the web browser on your computer and type **192.168.10.100** in the address bar, then you will be prompted to enter user name and password to get into the setting interface of the Wifi module, both of them are “**admin**”. After that you will enter the setting interface.

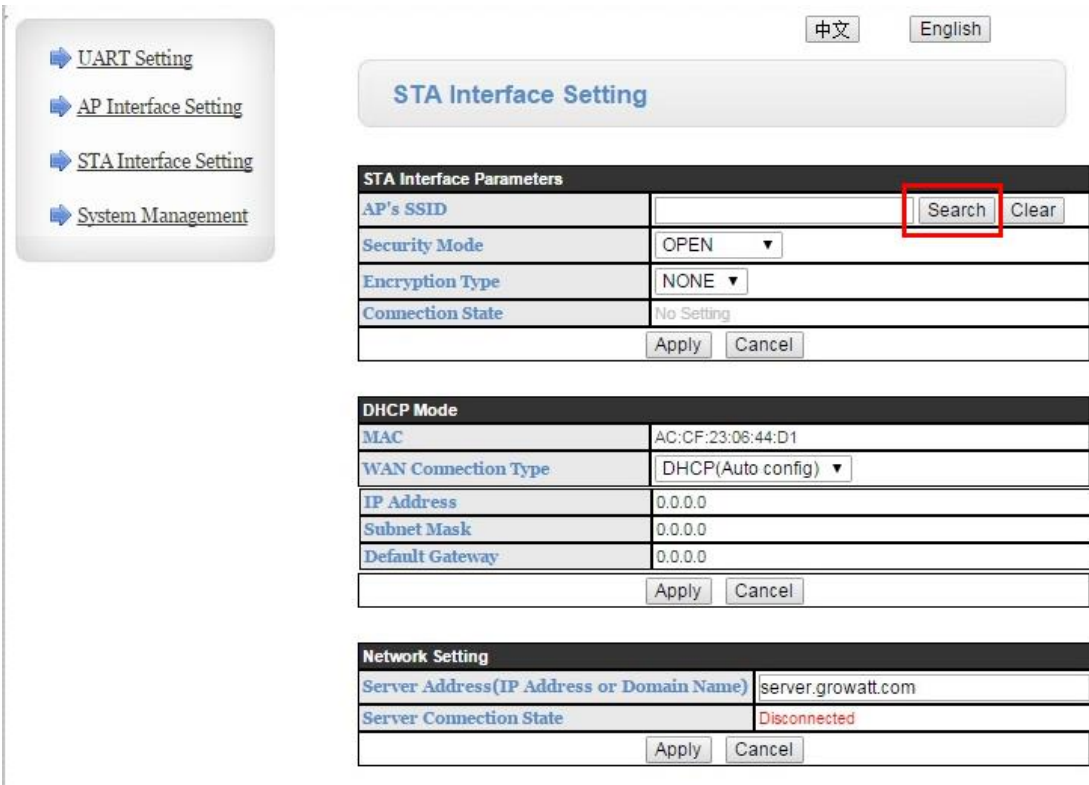




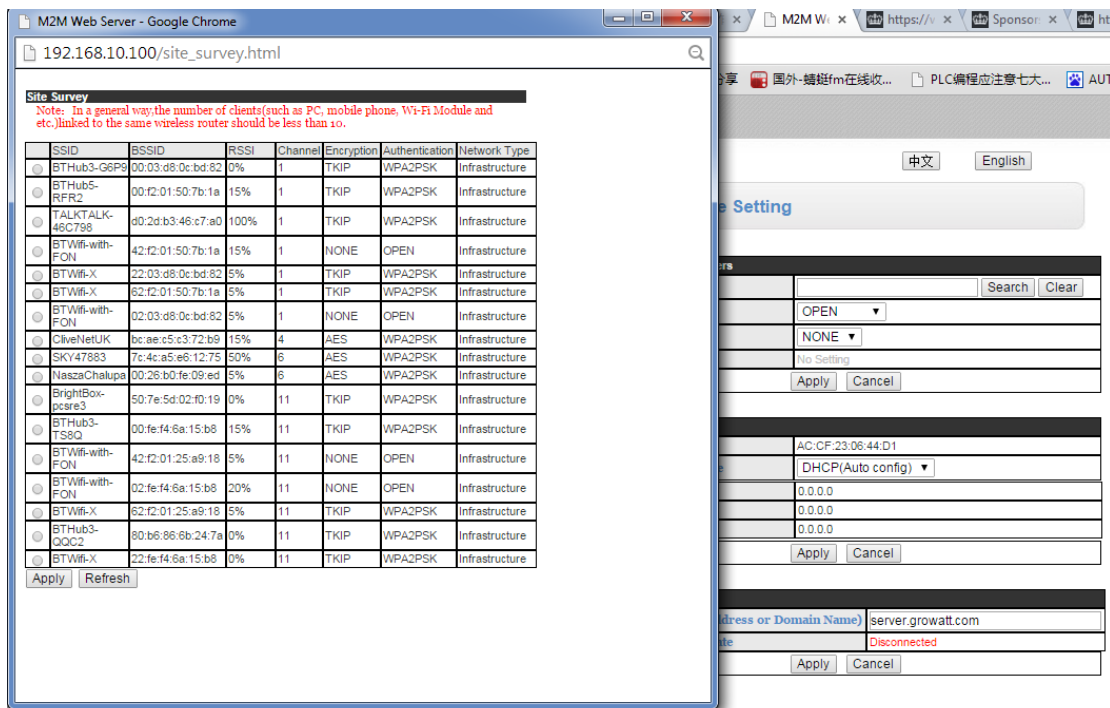
4. Check the connection between Wifi dongle and your inverter.
Switch to “UART Setting” page, check the parameters “**Device Quantity**” under “UART Setting” tab. If the communication between the inverter and Wifi dongle is Okay, the value will be 1, but if the value is 0, please check the connection between the inverter and Wifi module;



5. Then we will set the communication between the Wifi module and your wireless router.
 - a. Switch to “STA Interface Setting” page, Click the “**Search**” button under “STA Interface Parameters” Tab,



- b. a dialog window will pop up showing all the wireless network nearby, select the wireless network of your home router, then click “Apply”.



- c. Enter the WIFI password of your home wireless network in the “Pass Phrase” field, click “Apply”;

- [UART Setting](#)
- [AP Interface Setting](#)
- [STA Interface Setting](#)
- [System Management](#)

中文 English

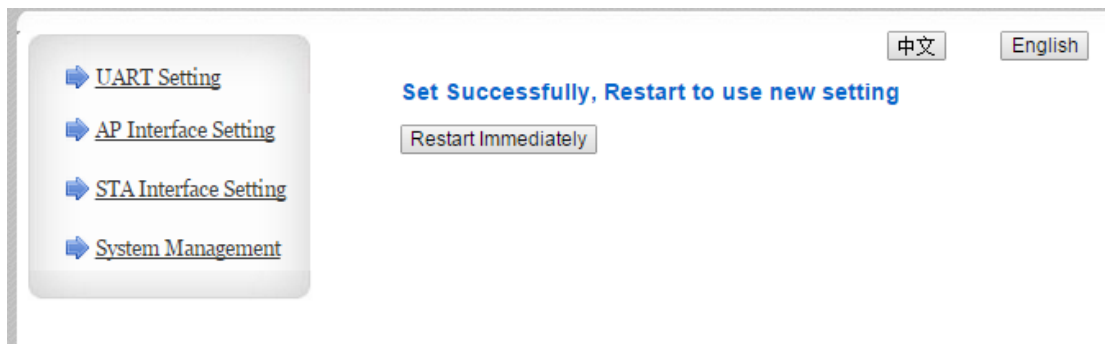
STA Interface Setting

STA Interface Parameters	
AP's SSID	TALKTALK-46C798 <input type="button" value="Search"/> <input type="button" value="Clear"/>
Security Mode	WPA2PSK ▼
Encryption Type	TKIP ▼
Pass Phrase(8~32 Characters)	CJL <input type="text"/>
Connection State	No Setting
<input type="button" value="Apply"/> <input type="button" value="Cancel"/>	

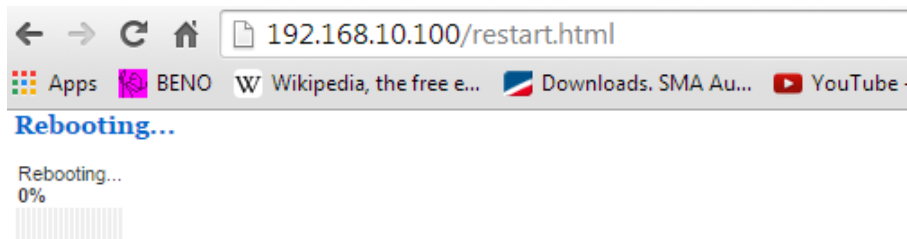
DHCP Mode	
MAC	AC:CF:23:06:44:D1
WAN Connection Type	DHCP(Auto config) ▼
IP Address	0.0.0.0
Subnet Mask	0.0.0.0
Default Gateway	0.0.0.0
<input type="button" value="Apply"/> <input type="button" value="Cancel"/>	

Network Setting	
Server Address(IP Address or Domain Name)	server.growatt.com
Server Connection State	Disconnected
<input type="button" value="Apply"/> <input type="button" value="Cancel"/>	

d. You'll be prompted to restart the Wifi dongle to make the setting take effect, click **“Restart Immediately”**;



e. There will be a progress bar showing the restarting progress. If the progress bar just stands still and doesn't move, please wait about 1 minute, then reload the page, switch to "STA Setting" page to check whether the connection between the Wifi dongle and your wireless router has been established;



- f. If the connection to router is Okay, the Connection State will become **“connected”**. And the Wifi dongle will connect to our Shine Server automatically(status shown in red frame).

The screenshot shows the 'STA Interface Setting' page with three main sections:

- STA Interface Parameters:**

AP's SSID	TALKTALK-46C798	Search	Clear
Security Mode	WPA2PSK		
Encryption Type	TKIP		
Pass Phrase(8-32 Characters)	CJ		
Connection State	Connected		
- DHCP Mode:**

MAC	AC:CF:23:06:44:D1
WAN Connection Type	DHCP(Auto config)
IP Address	192.168.1.10
Subnet Mask	255.255.255.0
Default Gateway	192.168.1.1
- Network Setting:**

Server Address(IP Address or Domain Name)	server.growatt.com
Server Connection State	Connected

For Step a-f, You can have a short cut road and use an android mobile app (ShineSmart.apk) to setup the WIFI dongle.

Run the software on an Android phone, it will search and connect to the WIFI dongle automatically in the “Select a method to search WI-FI Module” section. Then you just need to click “Select” in the next section to search and select your home WIFI, enter the password and click “Setting”, most of the time it will show “setting successful” at the bottom. Then the setup of connection to router is done, and you can use laptop computer to log in dongle (<http://192.168.10.100>) to obtain the ‘Check Code’. Finally, You’ll just need to create an account on the server portal.



6. Then sign up an account on Shine Server, and register your Wifi module on it.
 - a. Switch to “System Management” tab, record **Serial Number** and **Check Code** of the Wifi module for Shine Server account registration;

中文 English

System Management

Product Information	
Version	2.0
Serial Number	AH34916358
Check Code	4C111

Production Setting	
Data Transfer Interval	5Minutes
Monitor Mode	Single Mode
Time Zone	GMT+8
Apply Cancel	

Administrator Settings	
Account	admin
Password	admin
Apply Cancel	

- b. Enter “server.growatt.com” in your web browser, and click “**New User**” in Shine Server portal;

server.growatt.com

Growatt

Download Help Update Log Language

Login Old Style

Sign In

New User

forget password?

APP Download

ShinePhone iOS APP

ShinePhone Android APP

- c. Enter all the required information in the register window, tick “**agree**” and then click “**Register**”;

d. Then a pop-up window appears asking you to enter the plant information;

e. Enter all the fields with the asterisk mark and click "Save";

edit plant

installation information

plant name *

instal date *

power(Wp) *

company *

Set income formula(Set 1kwh as the conversion standard)

capital income

coal saved(Kg)

CO₂ reduced

SO₂ reduced

location information

country *

city

time zone *

latitude

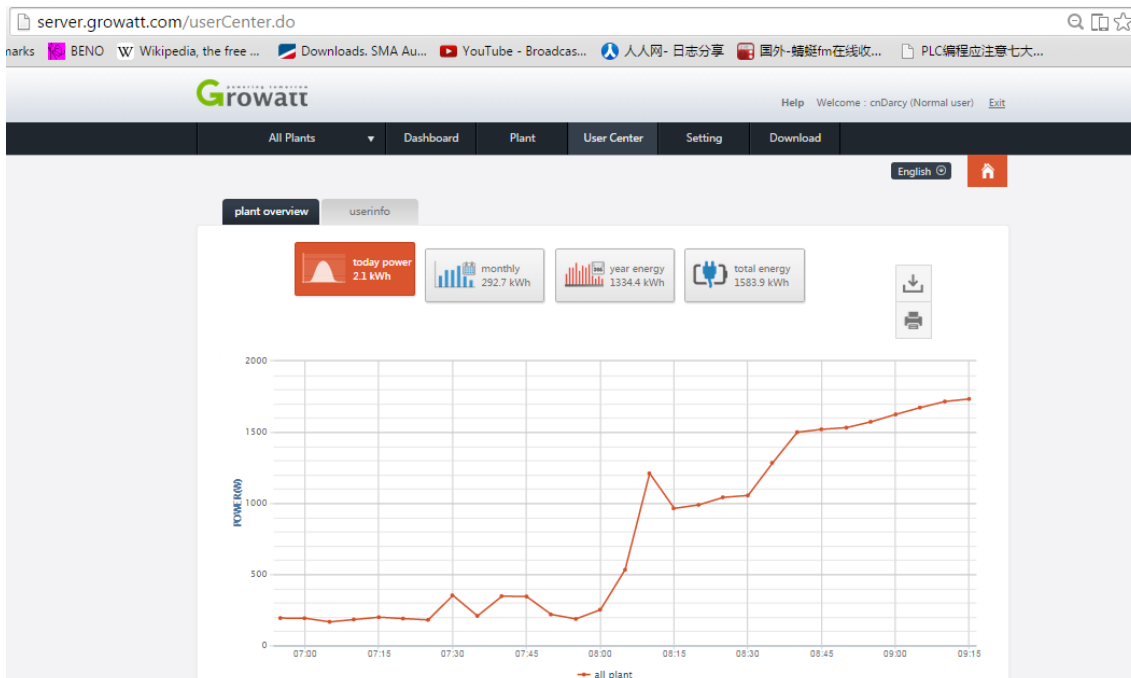
longitude

plant image No file chosen

map(drag red marker to select location)

please wait, are to take life Loading ...

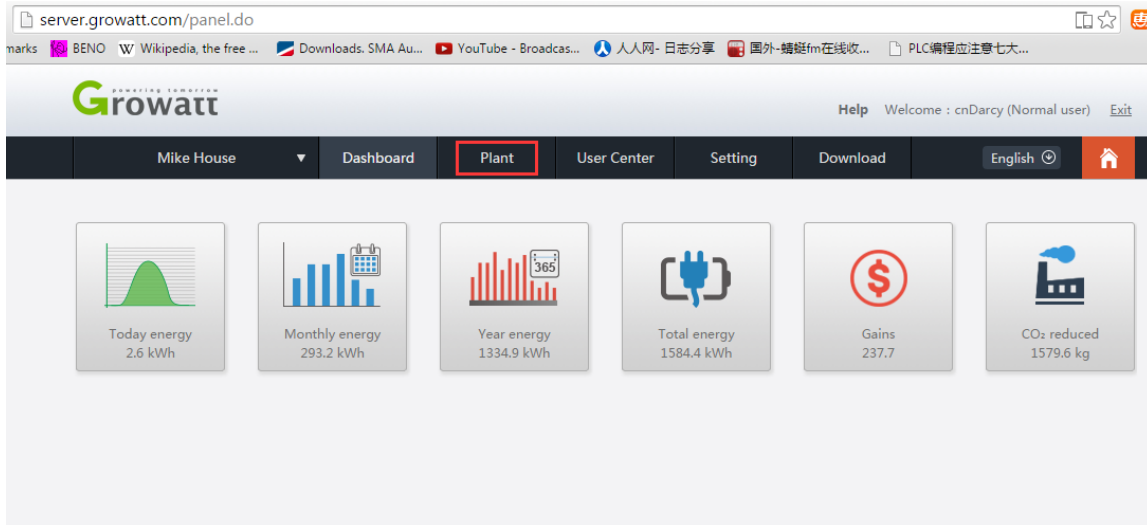
7. After that, all the setting is done. The data will be uploaded to the Shine Server every 5 minutes.



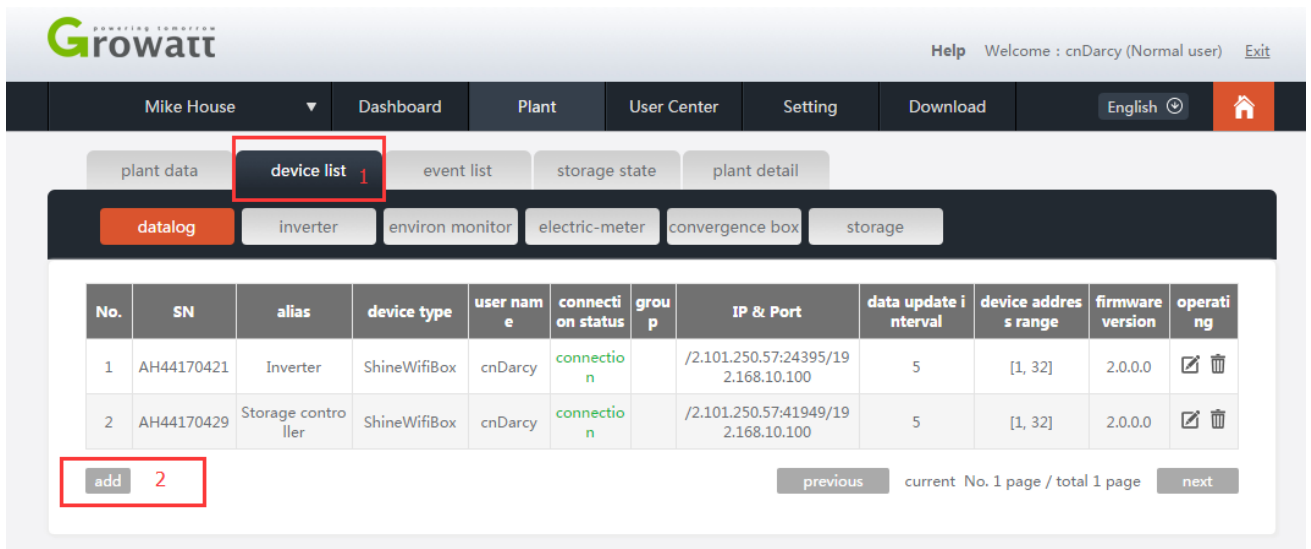
How to add WIFI dongle to your existing plant?

If you have more than one Wifi dongles and you want to put them all in one account and plant:

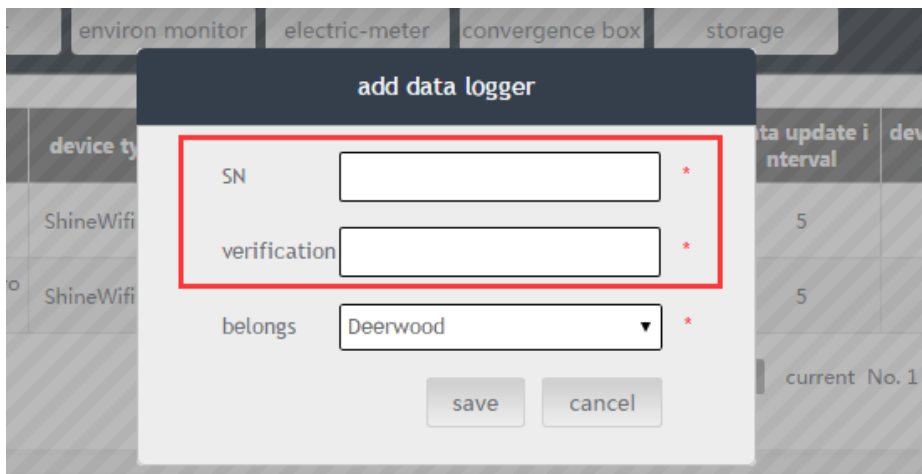
a. Sign in the Shine Server with your account, click the “Plant” tab;



b. Click “device list” tab, then click “Add” at the bottom left corner;



c. Enter the serial number and Check code of the Wifi dongle, click “Save”. Then all the setting is complete.



How to edit Plant information?

Growatt Help Welcome : cnDarcy (Normal user) Exit

Mike House | Dashboard | Plant | **User Center** | Setting | Download | English | Home

- Today energy: 3.2 kWh
- Monthly energy: 293.8 kWh
- Year energy: 1335.5 kWh
- Total energy: 1585 kWh
- Gains: 237.8
- CO₂ reduced: 1580.2 kg

Growatt Help Welcome : cnDarcy (Normal user) Exit

All Plants | Dashboard | Plant | **User Center** | Setting | Download | English | Home

plant overview | userinfo

today power: 3.2 kWh | monthly: 293.8 kWh | year energy: 1335.5 kWh | total energy: 1585 kWh

POWER(W)
2500
2000
1500
1000
500
0

07:00 07:15 07:30 07:45 08:00 08:15 08:30 08:45 09:00 09:15 09:30 09:45

all plant

+ add plant

No.	plant name	country	city	total energy (kWh)	operating
11141	Deerwood	UK	Crowborough	0.0	<input checked="" type="checkbox"/>
9147	Undefined plant	null	null	0.0	<input checked="" type="checkbox"/>
9399	TOP ROAD	UK	Oxford	0.0	<input checked="" type="checkbox"/>
9817	Mike House	UK	Burton-on-Trent	1585.0	<input checked="" type="checkbox"/>
11156	Stanley Grove	UK	Wrexham	0.0	<input checked="" type="checkbox"/>

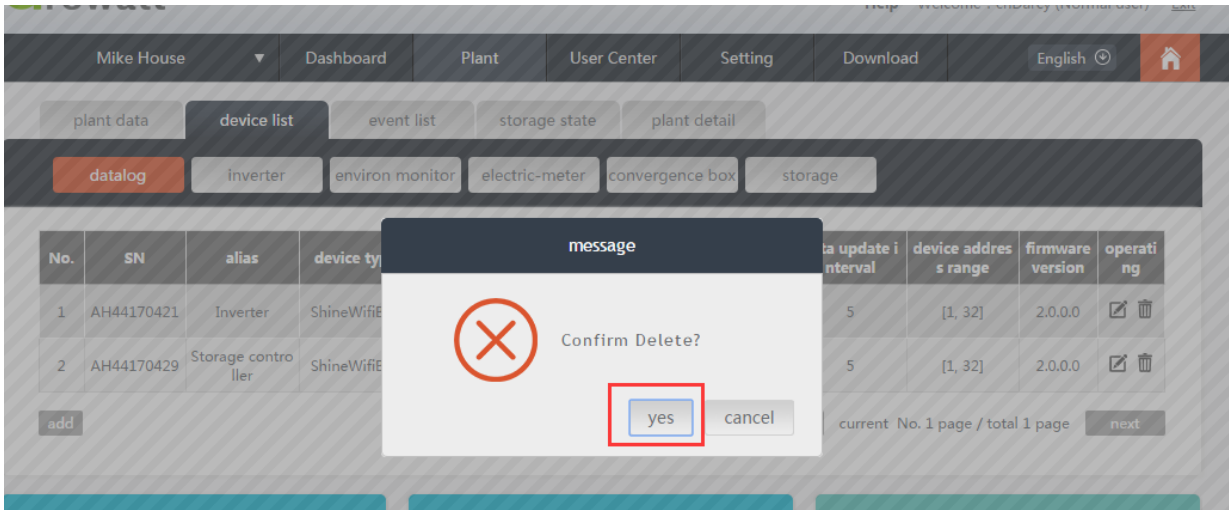
previous current No. 1 page / total 1 page next

Copyright©2014 - GROWATT NEW ENERGY TECHNOLOGY CO.,LTD-ShineServer 3.3.1

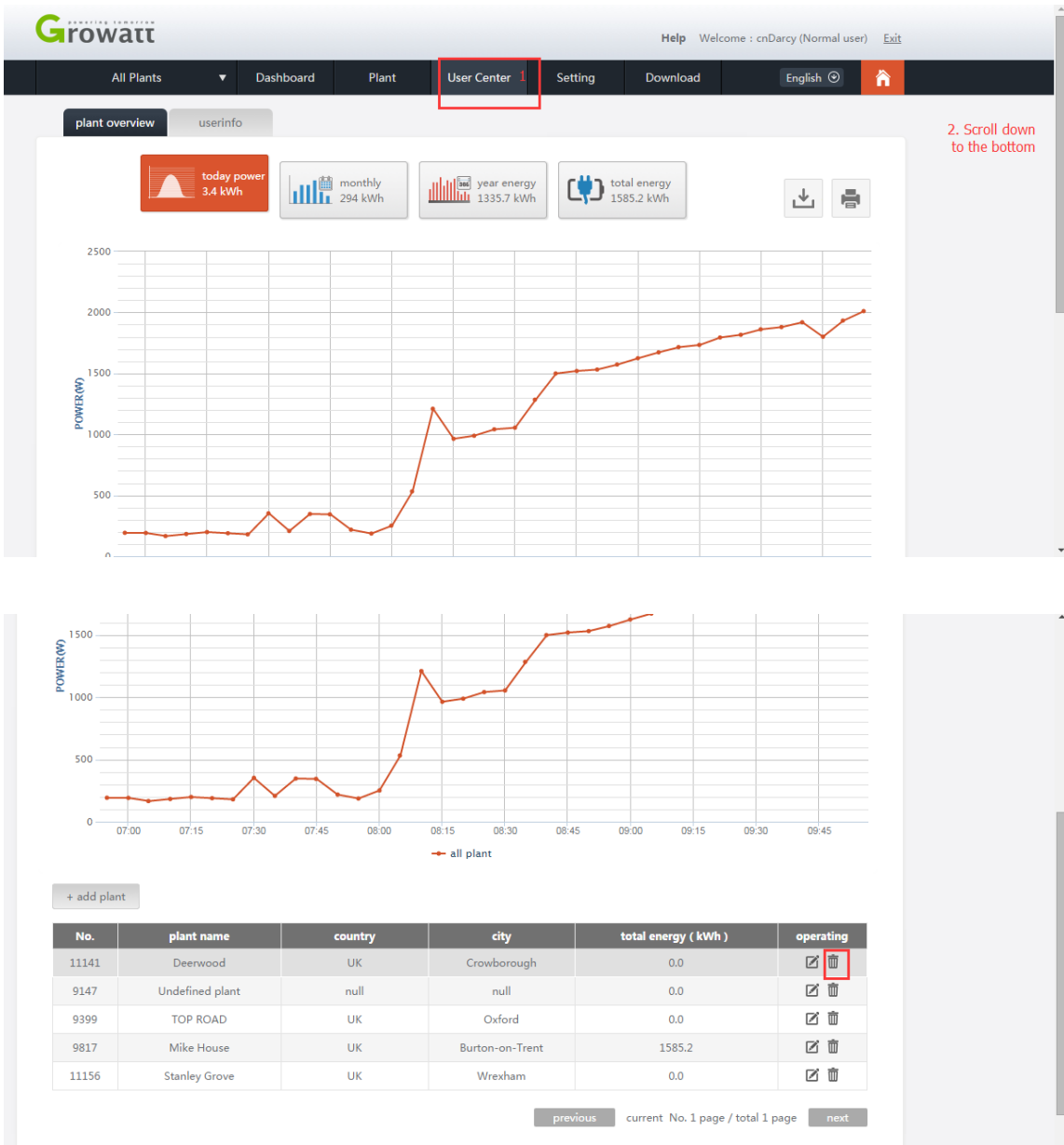
How to delete Wifi module on Shine Server?

If you inadvertently set a wrong parameter or you just installed a new Wifi dongle to replace the old one, you'll need to know how to delete the Wifi dongle.

No.	SN	alias	device type	user name	connection status	group	IP & Port	data update interval	device address range	firmware version	operating
1	AH44170421	Inverter	ShineWifiBox	cnDarcy	connection		/2.101.250.57:24395/192.168.10.100	5	[1, 32]	2.0.0.0	3
2	AH44170429	Storage controller	ShineWifiBox	cnDarcy	connection		/2.101.250.57:9057/192.168.10.100	5	[1, 32]	2.0.0.0	



How to delete the Plant?



The screenshot shows a web interface with a line graph at the top and a table of plants below. A modal dialog box is open in the center, asking for confirmation to delete a plant. The dialog has a red 'X' icon and the text 'confirm delete the plant?'. There are two buttons: 'yes' (highlighted with a red box) and 'cancel'. The table below has columns for 'No.', 'plant name', 'total energy (kWh)', and 'operating'. The 'operating' column contains edit and delete icons.

No.	plant name	total energy (kWh)	operating
11141	Deerwood	0.0	
9147	Undefined plant	0.0	
9399	TOP ROAD	0.0	
9817	Mike House	1585.2	
11156	Stanley Grove	0.0	

If there is any problem during the Wifi dongle setting, please contact your installer or Growatt(service@ginverter.com) for assistance.