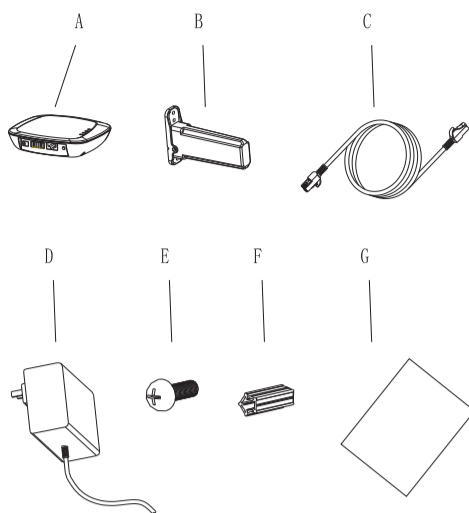


Growatt ShineLink
Quick Installation Guideline

Step1. Unpacking

Unpacking, and check the package device list:



Item	Name	Quantity
A	ShineLanBox	1
B	ShineRFStick	1
C	Network	1
D	Power adapter	1
E	Fixing screws	4
F	Wall plastic posts	2
G	User manual	1

For more info, please download from <http://server.growatt.com>

T +86 755 2951 5888 F +86 755 2747 2131

E service@ginverter.com W www.ginverter.com

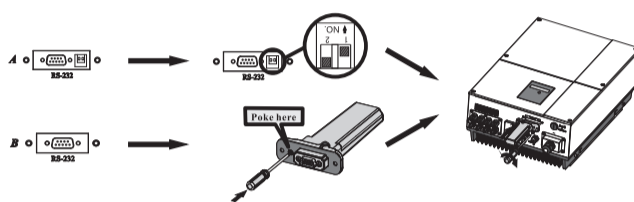
Step2. Electrical Connection

1> ShineRFStick Electrical Connection

Take the waterproof plate down from RS-232 port of the inverter

A If the RS-232 port of the inverter likes the specification A as below, please turn on pin 1 of the DIP switch, then plug the Growatt ShineRFStick to the inverter directly via the RS-232 port and lock the screws;

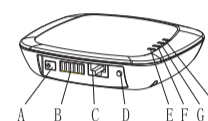
B If the RS-232 port of the inverter likes the specification B as below, please poke the rubber plug in the waterproof cushion of the Growatt ShineRFStick, then plug the ShineRFStick to the inverter via the RS-232 port and lock the screws.



C Power on the inverter, observe the blue led in the ShineRFStick, if the led on and then turn to flash, it means ok, otherwise means you should check the installation.

Blue LED status:
Solid on: device is initializing
Solid off: no device found on RS232 port
Flashing fast (change every 0.2s): Found device on RS232 port
Flashing slow (change every 1s): network communication normally

2> ShineLanBox Electrical Connection



Item	Name	Description
A	Power input	Connect to the power adapter
B	RS 485	Reserved
C	RJ 45	Connect to the network
D	Key	Function key
E	Configuration LED	Configuration the device
F	Device LED	Device number connected
G	Network LED	Connecting the network
H	Power LED	Connecting the power

Connect the RJ45 interface of the ShineLanBox to the router ,then plug in the power adapter to power on the ShineLanBox.

After power on, the Power LED on, Network LED flashing, then the ShineLanBox start to search the RF device and connect to the server. Network LED on means connect to the server ok, device LED flashing means devices connect ok. If there are more than one RF device, please note the device LED continuous flashing times, it means the connected devices number.

Note:

- 1.Power LED : connecting the power
- 2.Network LED : connecting the network
- 3.Device LED: the number of the LED continuous flashing means the device number connected to the ShineLanBox
- 4.Configuration LED: flashing when configuration , if successful , the LED will be off.

Step3. Use ShineLink

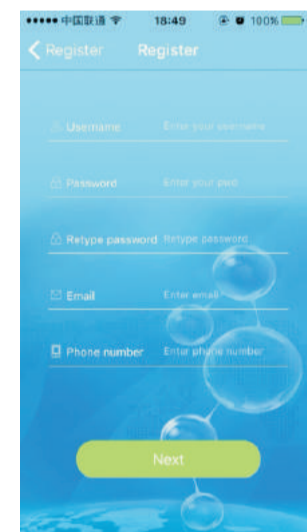
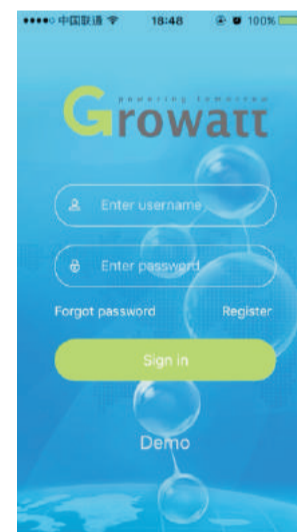
Search "ShinePhone" in google play or app store, or scan the picture below, download and install the app.



【Android&iOS】

NOTE: 1.Be sure to install the latest version of the software;
2.For more details, please refer to the content on <http://server.growatt.com> .

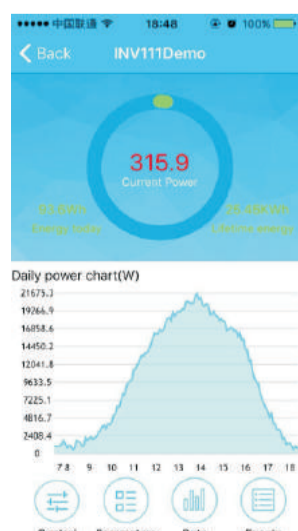
- 1.Run ShinePhone, please register a new user if is the first time. When entering SN ,Please enter the ShineLanBox SN , not the ShineRFStick SN.
- 2.Input the user name and password to log in.



3.Into the device page, check the device number configured and the status.



4.Put the device list to the detail page, check the device parameters.



Append

Add new ShineRFStick:

Short press the button of the ShineRFStick and ShineLanBox , entering the configuration mode, if successful, the configuration LED of the ShineLanBox will be off ,and the blue LED of the ShineRFStick will flash slowly.

Note:

- 1.Pressing the button of the ShineLanBox for more than 6 seconds until the four LED flash will clear the configuration information .
- 2.About the distance between the ShineLanBox and the ShineRFStick, the maximum linear distance is 200m if there is no obstructions between then; the maximum distance is 50m if there is one wall between then; the maximum distance is 20m if there are two walls between then.