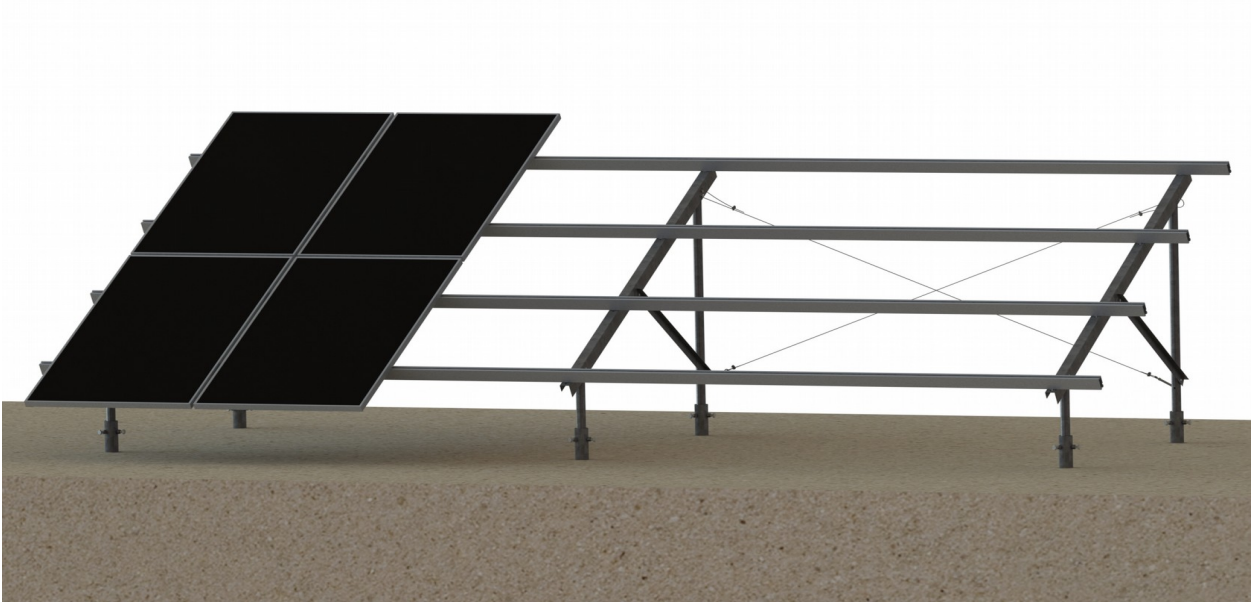


Ground mounted solution with Ground Anchors



DATASHEET

9.77kg/m²Weight (excluding module)

PortraitModule Orientation

30°Standard module angle

AluminiumMaterial (rail & components)

Stainless steel & Galvanised Steel EN ISO 1461Material (fixing, screws & bolts)

Screws into the ground.

This system is designed to easily screw into the ground that has a high clay content, making it a fast and popular solution, particularly for small to medium sized projects.



Universal. Adjustable. Flexible.

We know that sometimes ground conditions can be problematic, whether it's because of a slight incline or just the simple fact of the land not being even. To get around this, we've ensured that our Ground Anchor system allows greater adjustability in the height of the individual posts of the frame, as well as the positioning of the posts within the Ground Anchors.

The framing is designed to work with most solar panels, allowing it to universally suit most projects and with no limit to how long you can make the array, it allows you to make the most of the space available.



Holds 2 solar panels high in portrait.

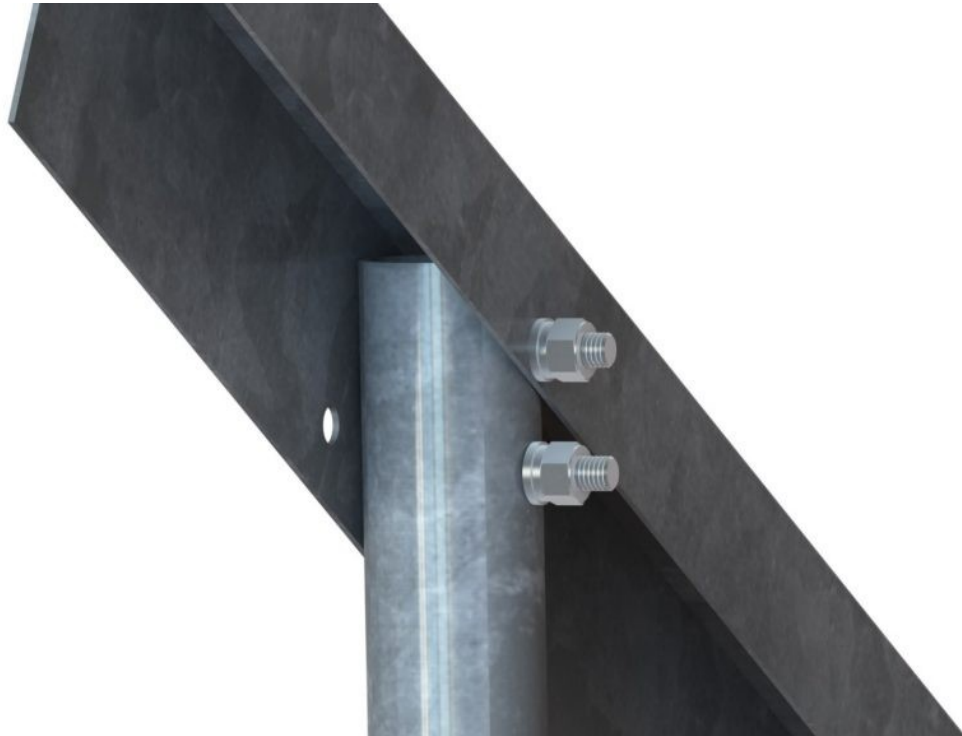
Our standard structure is designed to support 2 solar panels high in the portrait orientation, as this allows more space within the array for more solar panels. There isn't a limit to how many solar panels that can be installed in a single line.



Mind the thermal gap.

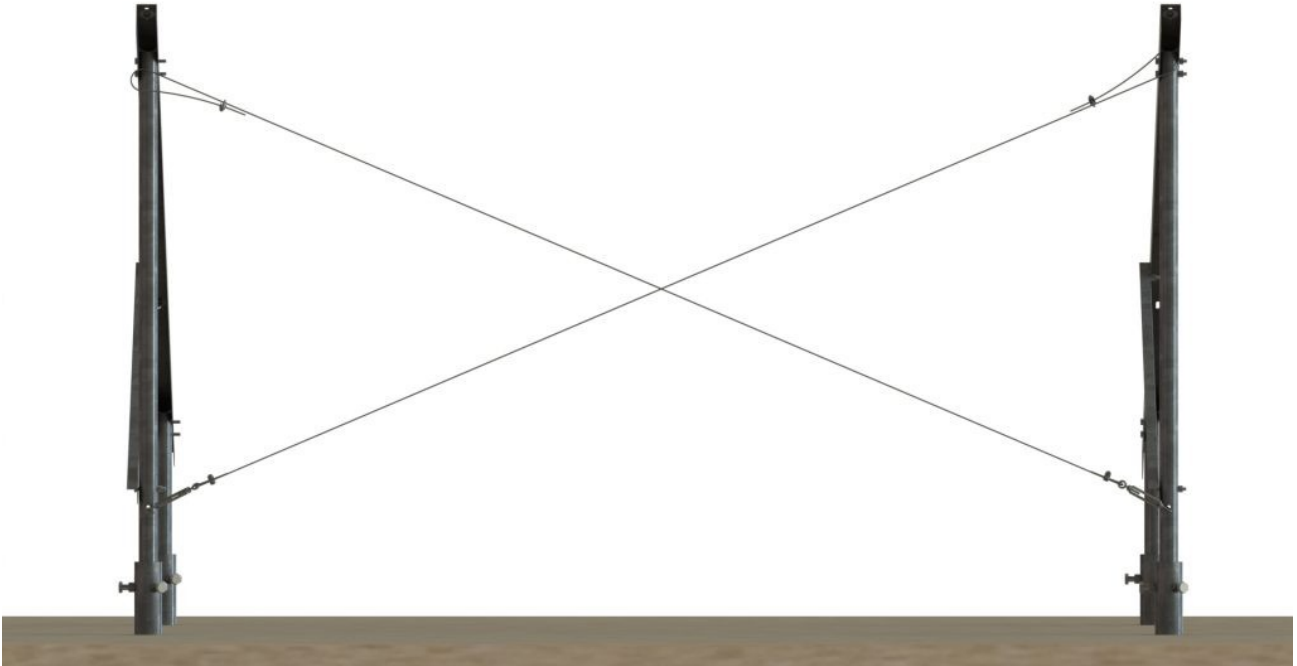
Our mounting rail profiles are produced from high quality aluminium, which contracts during colder weather and expands during warmer weather. While this expansion is less than a couple of millimeters a year, it's important to leave regular gaps to allow this natural process occur.

This is why we have a separate component called the Flexible Connector, which fixes into one side of the mounting rail and controls this expansion without compromising the length of the overall array.



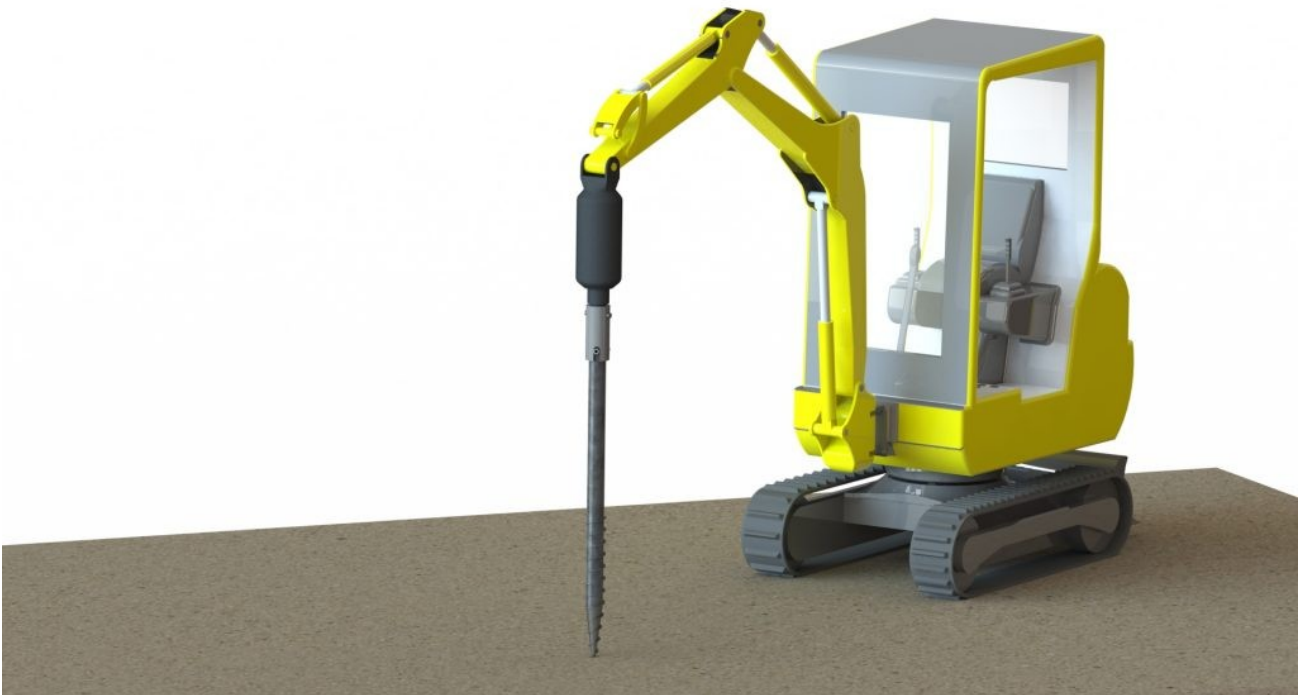
Not all systems have to leave their mark.

It's important for us that, as a sustainable energy solution, our system settles within its surrounding environment. This is why we've ensured it creates minimal ground disturbance and can be incorporated into land which holds livestock.



Additional security.

We add wind bracing in the form of tension cable to the back of the frames at certain intervals along the solar panel row, to provide added stability against lateral movement. We calculate where you need to place these wind bracing sets and they'll be marked on the drawing layouts that we provide you at the point of order.



Recommended equipment.

We recommend hiring a 2.5 tonne cylinder head hydraulic auger unit, with a reverse option for installing the Ground Anchors. Sometimes the ground may need a little more pressure applying to it and for this a 4-5 tonne auger unit is better suited. We'll lend you an auger adapter that fits the auger unit to help screw them in.



We'll produce bespoke structures to support solar panels mounted in landscape.

While our standard stock is catered for mounting solar panels in portrait, we can produce bespoke frames to allow the mounting of the solar panels in landscape.

We provide a warranty for our calculations as well as our products.

It's our strong belief that correct practices should be applied and followed up that's why we calculate each project, whether it's 2kWp or 2MW, to ensure that it's safely and professionally designed. We support our calculations and mounting systems with our 10 year warranty.



We're using resilient materials, because we've designed it to last.

We favour the hot-dipped method of galvanising the steel elements of our ground mounted systems. This is because, compared to electro-galvanising, it allows us to specify the thickness of the protective coating. The average thickness of steel parts in other industries is around 200g/m, but at Sunfixings we double this, so that this protective coat is a minimum of 400g/m and therefore, ensuring a long lasting life for our systems.



Universal module clamps.

Our module clamps are universally suitable for all solar panel depths and what's more, they'll arrive to you pre-assembled, allowing you to keep on schedule when it matters the most. They're also available in black.

