



GS SOLAR GROUND MOUNT SOLUTIONS



佰明集团

BYMEA GROUP

Bymea Investment Co., Ltd.

Bymea LED Co., Ltd.

Bymea E Business Co., Ltd.

Xiamen Grace Solar Technology Co., Ltd.



XIAMEN GRACE SOLAR TECHNOLOGY CO., LTD.

(BYMEA Group) Building B/C Vanke Yunxi, No. 527/529 Gaolin Middle Rd,
Huli Dist, Xiamen, China.

T:0086-592-3671921

F:0086-592-5732132

W:www.gracesolar.com

M:info@gracesolar.com



XIAMEN GRACE SOLAR TECHNOLOGY CO.,LTD.

About Grace Solar

Xiamen Grace Solar Technology Co., Ltd. is a leading manufacturer of photovoltaic mounting system and a big supplier of PV products. High-tech and innovation help Grace Solar to always keep pace with the whole industry and the world market. We devote to manufacturing and marketing the steadiest, most trustable and cost-effective solar mounting system solutions to our customers and faith in the belief of "best service". As one of the largest PV solar products exporters in China, the industrial pioneer – Grace Solar has already installed its products in more than 100 countries and regions since its foundation.



Group Company

RESEARCH AND DEVELOPMENT

Grace Solar emphasizes specialty and innovation on its products and offers good guarantee and professional support to customers.

Grace Solar values talent people a lot. A professional research and development team that is led by qualified and experienced elite is set up in the birth of the company. The application of the most advanced equipments turns the company to an industrial leader of the structural design and system performance. Grace Solar cherishes its intellectual property and software copyrights of high-tech products including Ground Mounting System, Roof Mounting System etc.



OFFICE



Overseas Marketing Department



Meeting Room

FACTORY



Aluminum



Oxidizing



Assembly

MANAGEMENT CONCEPTS

Grace Solar brought forward the standardized and internationalized management concept at the very beginning of its establishment. It positively introduces the international management systems such as APQP, FMEA, ISO9001:2008, CP Control Plan, MSA, SPC and applies them strictly in R&D, manufacturing, marketing, service etc. phases. Furthermore, Grace Solar strives to acquire international authority certification for the products and actively studies with international and domestic certification institutions such as TUV, CE, CQC, SAA, AS/NZS 1170 and Golden Sun.

SERVICE NETWORKS

Due to long term quick feedbacks for the reliable and qualified products and services, Grace Solar wins trust from system integration companies, installers and distributors worldwide. Cooperating with several strong facilitators in different areas, Grace Solar creates global service networks to offer superior and efficient services.

PACKING



Rail Packing



Ground Screw Packing



Support Rail Packing



If you are looking for PV mounting system, you can surely trust us. The mounting system from Grace Solar enjoys **6** advantages:

- 1、 Competence**

We serve more than 500 clients and our mounting system has already been installed around the world especially in Japan and Australia. 4GW project implemented since 2009.


- 2、 Wide Applicability**

Design of the mounting system is based on the international standards that can fit for all kinds of solar module types in the world.


- 3、 Manufacture**

We apply the high strength aluminum alloy 6005-T5 to ensure the mounting system durable and in supreme quality. High capacity and fluent production line makes it possible to mass manufacture. Month capacity is up to 120MW-150MW; for project less than 5MW, the system can be shipped out within two weeks.


- 4、 Best Value for Money**

We offer one stop business from design, manufacture to sell; this lowers the cost of our product and makes our price competitive compared with other brands in the same quality.


- 5、 Shipment**

We are in a seaport city and can deliver the mounting system to almost any corner in the world upon request.


- 6、 Quality Warranty**

We promise 10 years warranty. Predicting product life about 20 years.



Content



AL GROUND MOUNTING SYSTEM IV

05-14



AL FARM PV MOUNTING SYSTEM

15-18



CARPORT PV MOUNTING SYSTEM

19-20



DOUBLE-POST MOUNTING SYSTEM

21-22



PILE GROUND MOUNTING SYSTEM

23-26



FENCE

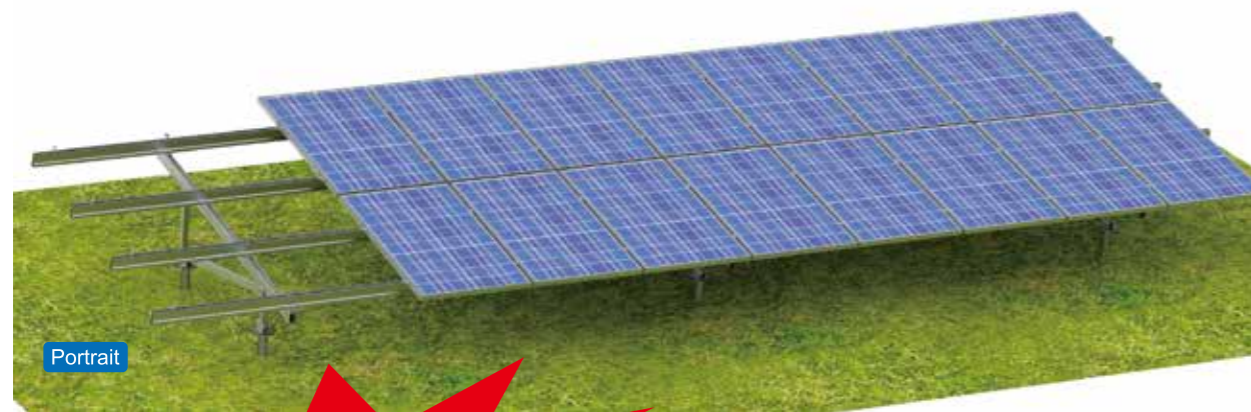
27-28



GROUND SCREW

29

AL-GROUND MOUNTING SYSTEM IV



Focus on the details
Optimize the structure

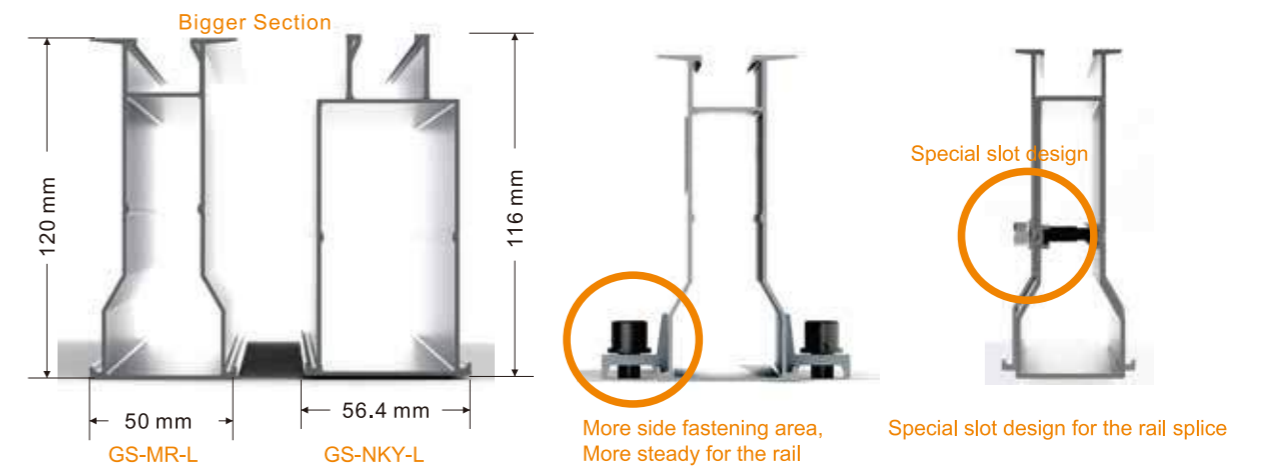
Technical Information

| | | | |
|------------------|-----------------------|-----------|------------------------------|
| Install Site | Open Field | Material | Aluminum Alloy & SUS A2 - 70 |
| Tilt Angle | 0-45° | Color | Natural Color, Black |
| Structure Height | <4m | Finishing | Anodizing |
| Max Wind Speed | 60m/s | Fondation | Concrete Ground Screw |
| Snow Load | 1.4KN/ m ² | Warranty | 10 Year Quality Warranty |
| Standard | AS/NZ 1170, JIS C8955 | | |

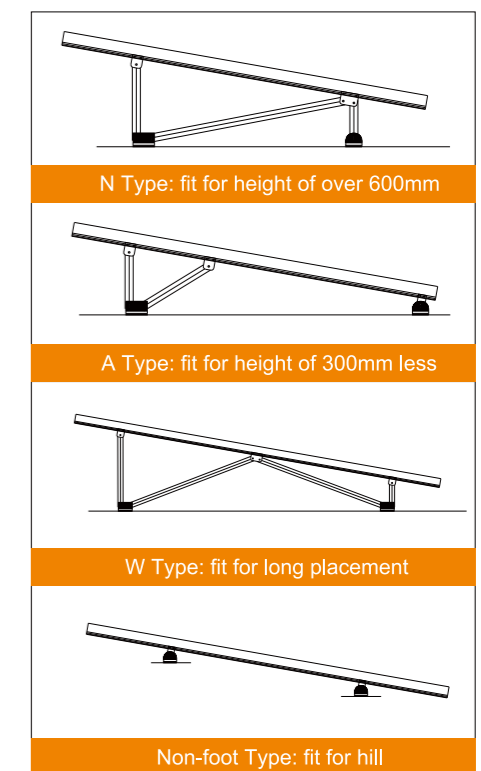
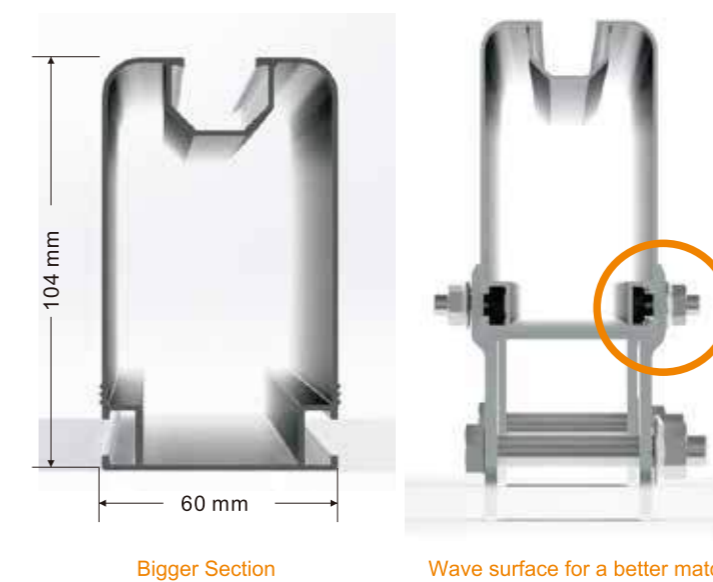


Introduction

New Main Rail



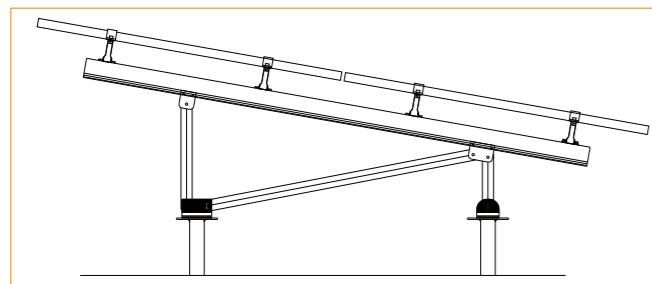
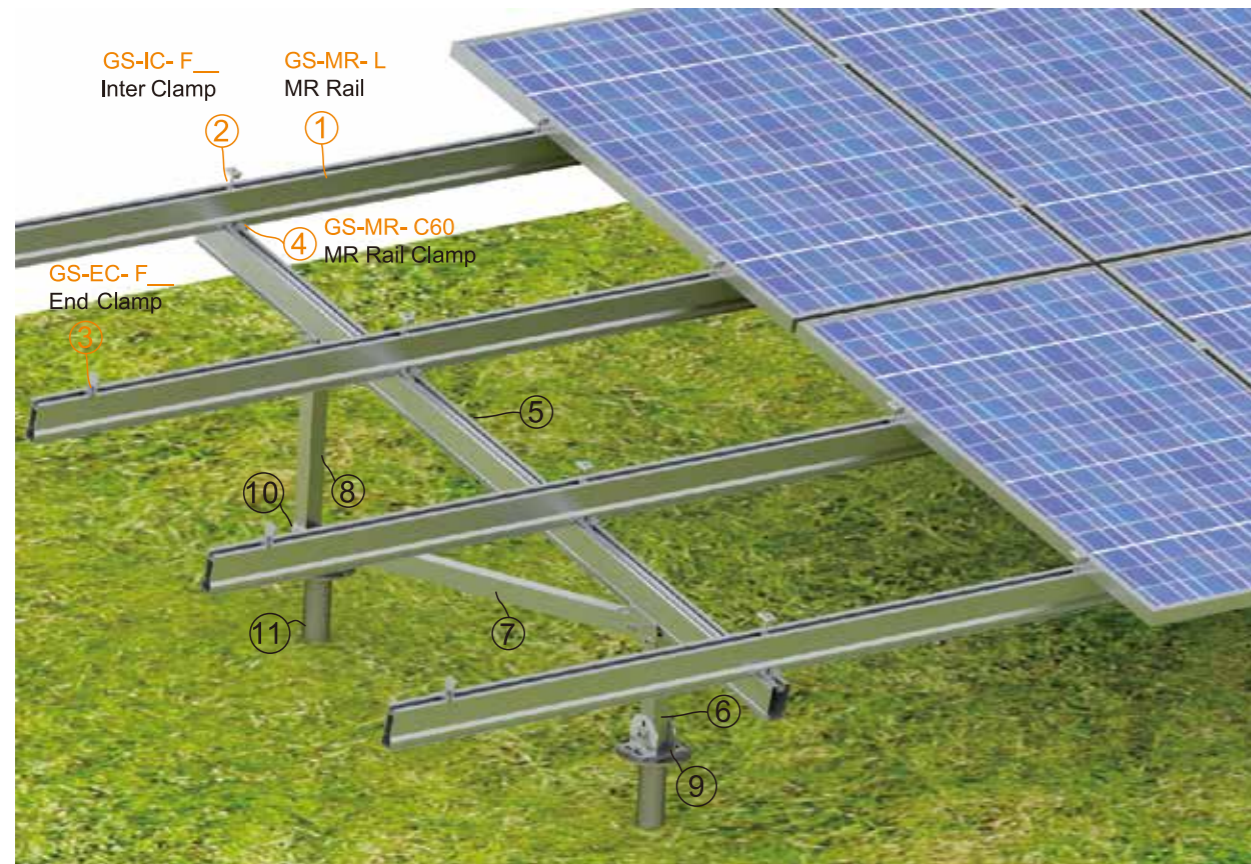
New Support Beam



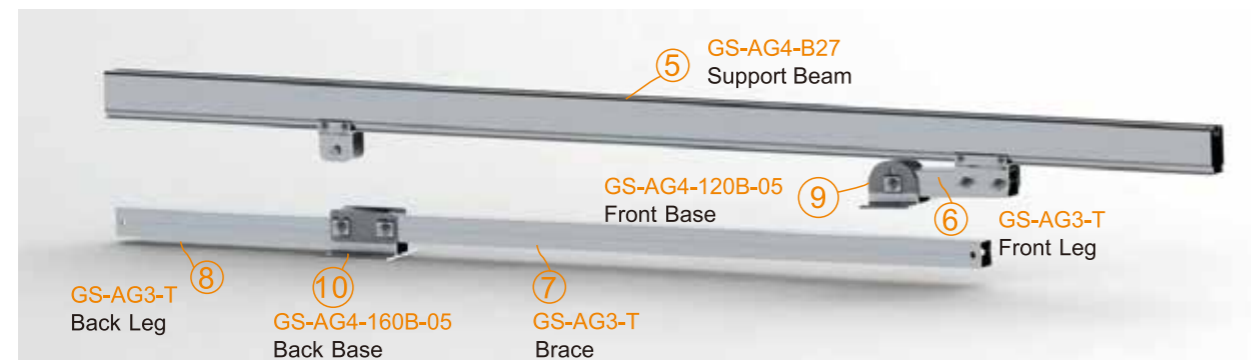
various structures for the different ground types

APPLICATION

Portrait Placement



Pre-assembly in the factory to save time and labor cost.

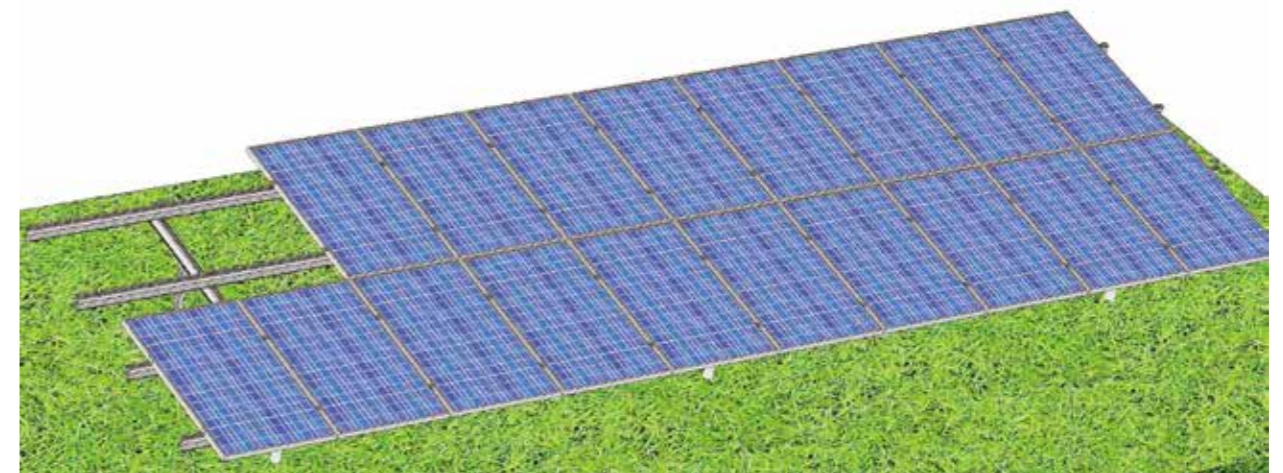


PROJECT EXAMPLE

Step 1: Project Information

| | | | |
|---------------------|-----------------------|---------------|--------------|
| Solar Panel Size: | 1650x992x40mm | Flood Height: | 500mm |
| Tilt Angle: | 30° | Wind Speed: | 40m/s |
| Module Orientation: | Portrait | Unit Array: | 2* 10(20pcs) |
| Foundation: | Ground Screw Concrete | | |

Step 2: Planning

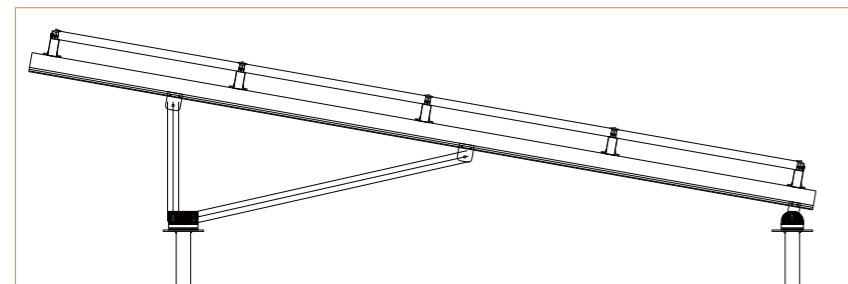
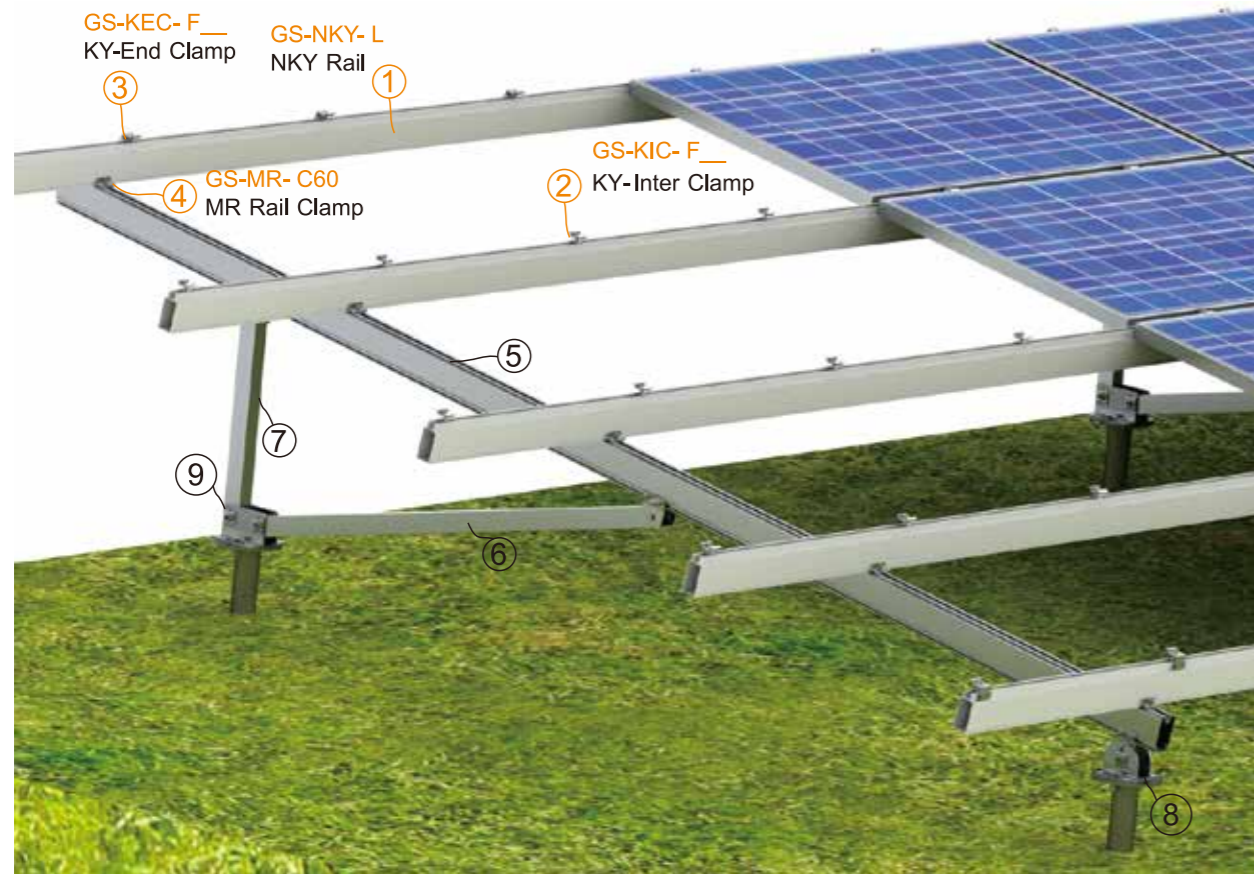


Step 3: Components List

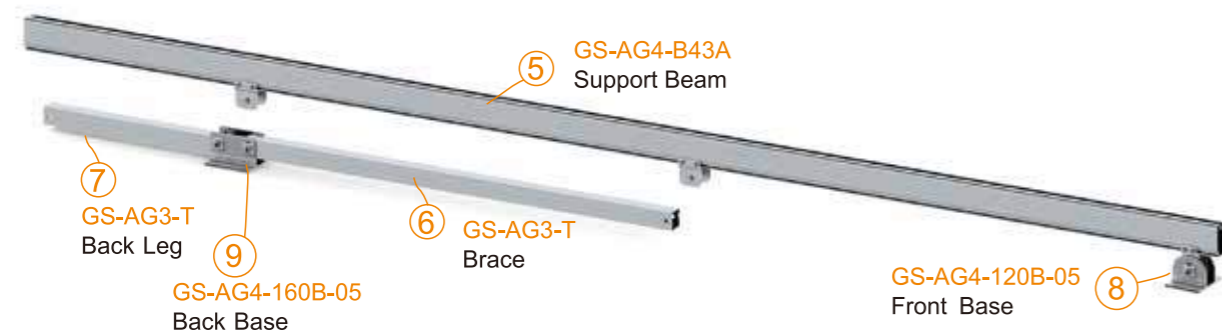
| Item | Description | Spec. | Qty | Package |
|-----------------|--------------------------|-----------|--------|-----------------------|
| GS-MR-5100 | GS MR Rail 5100 | 5100mm | 8 pcs | 148pcs/pallet |
| GS-MR-SP | GS MR Rail Splice | 400mm | 4 pcs | 9pcs/Box,2Boxes/CTN |
| GS-MR-C60 | GS MR Rail Clamp | 60mm | 24 pcs | 100pcs/Box,4Boxes/CTN |
| GS-IC-F40 | GS Inter Clamp | 40mm | 36 pcs | 100pcs/Box,4Boxes/CTN |
| GS-EC-F40 | GS End Clamp | 40mm | 8 pcs | 100pcs/Box,4Boxes/CTN |
| GS-AG4-B27A | AG4 Support Beam, 2740mm | 2740mm | 3 pcs | Pre-assembly |
| GS-AG3-T-1150 | AG 3 Leg, 1150mm | 1150mm | 3 pcs | |
| GS-AG3-T-950 | AG 3 Leg, 950mm | 950mm | 3 pcs | |
| GS-AG4-160B-05 | AG 4 Back Base-05 | 160mm | 3 pcs | |
| GS-AG4-120B-05 | AG 4 Front Base-05 | 120mm | 3 pcs | |
| GS-F76C-1600-T3 | Ground Screw | 76x1600mm | 6 pcs | 160pcs/pallet |

APPLICATION

Landscape Placement



Pre-Assembly in the factory



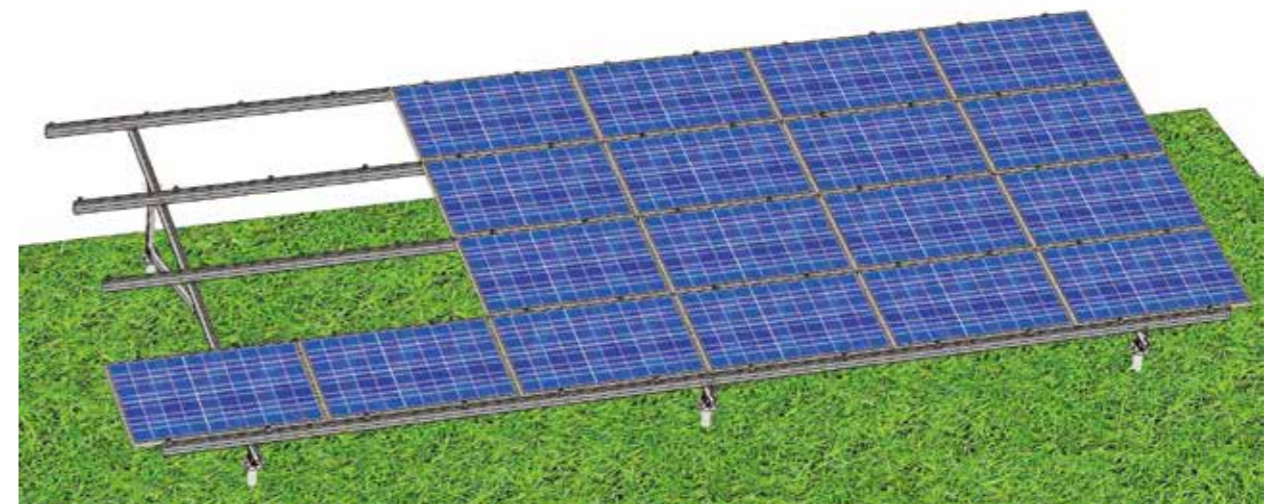
PROJECT EXAMPLE

Step 1: Project Information

| | |
|---------------------|-----------------------|
| Solar Panel Size: | 1650x992x40mm |
| Tilt Angle: | 30° |
| Module Orientation: | Landscape |
| Foundation: | Ground Screw Concrete |

| | |
|---------------|------------|
| Flood Height: | 500mm |
| Wind Speed: | 40m/s |
| Unit Array: | 4*6(24pcs) |

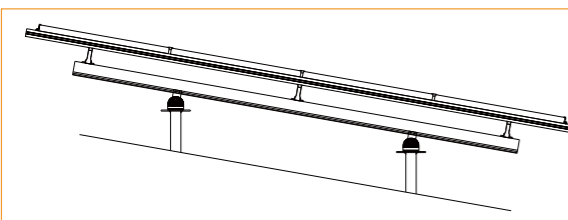
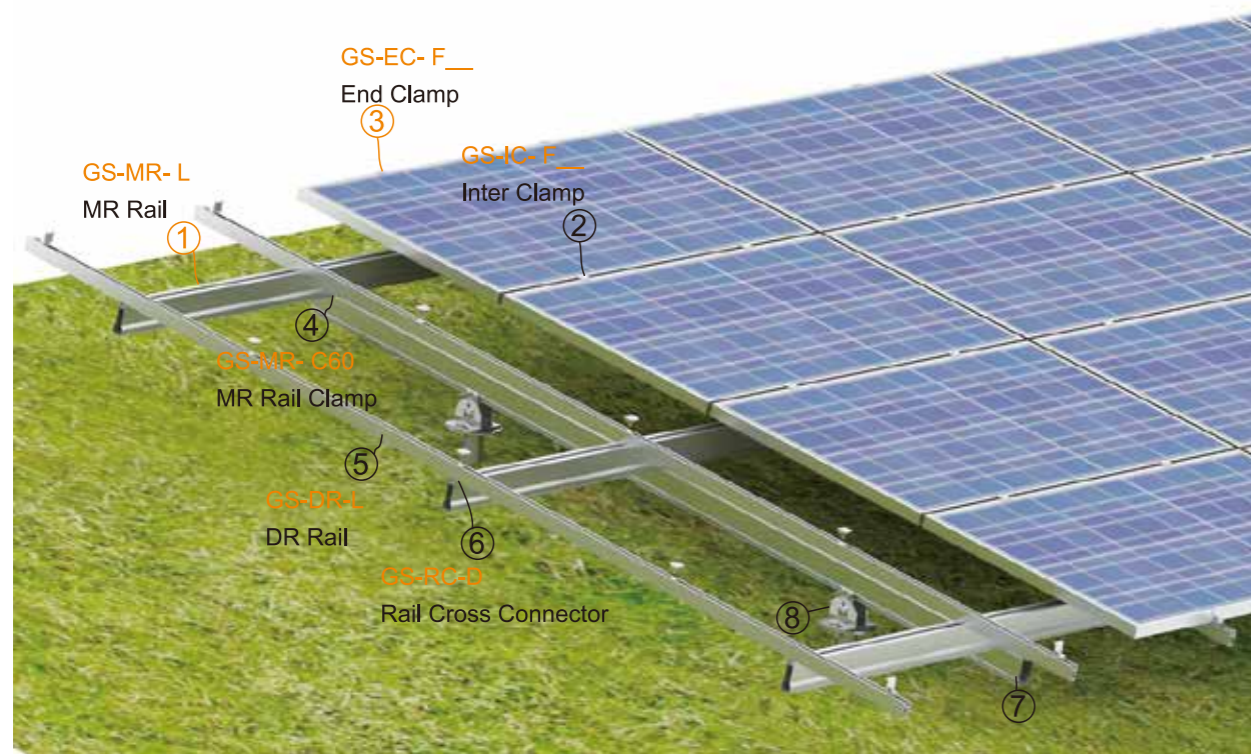
Step 2: Planning



Step 3: Components List

| Item | Description | Spec. | Qty | Package |
|-----------------|--------------------------|-----------|-------|-----------------------|
| GS-NKY-4800 | GS NKY Rail 4800 | 4800mm | 10pcs | 128pcs/pallet |
| GS-NKY-SP | GS NKY Rail Splice | 400mm | 5pcs | 6pcs/Box,2Boxes/CTN |
| GS-MR-C60 | GS MR Rail Clamp | 60mm | 30pcs | 100pcs/Box,4Boxes/CTN |
| GS-KIC-F35/40 | KYR Inter Clamp | 35-40mm | 36pcs | 100pcs/Box,4Boxes/CTN |
| GS-KEC-F40 | KYR End Clamp | 40mm | 24pcs | 100pcs/Box,4Boxes/CTN |
| GS-AG4-B43A | AG 4 Support Beam,4300mm | 4300mm | 3pcs | Pre-assembly |
| GS-AG3-T-1750 | AG 3 Leg, 1750mm | 1750mm | 3pcs | |
| GS-AG3-T-1610 | AG 3 Leg, 1610mm | 1610mm | 3pcs | |
| GS-AG4-160B-05 | AG 4 Back Base-05 | 160mm | 3pcs | |
| GS-AG4-120B-05 | AG 4 Front Base-05 | 120mm | 3pcs | |
| GS-F76C-1600-T3 | Ground Screw | 76x1600mm | 6pcs | |

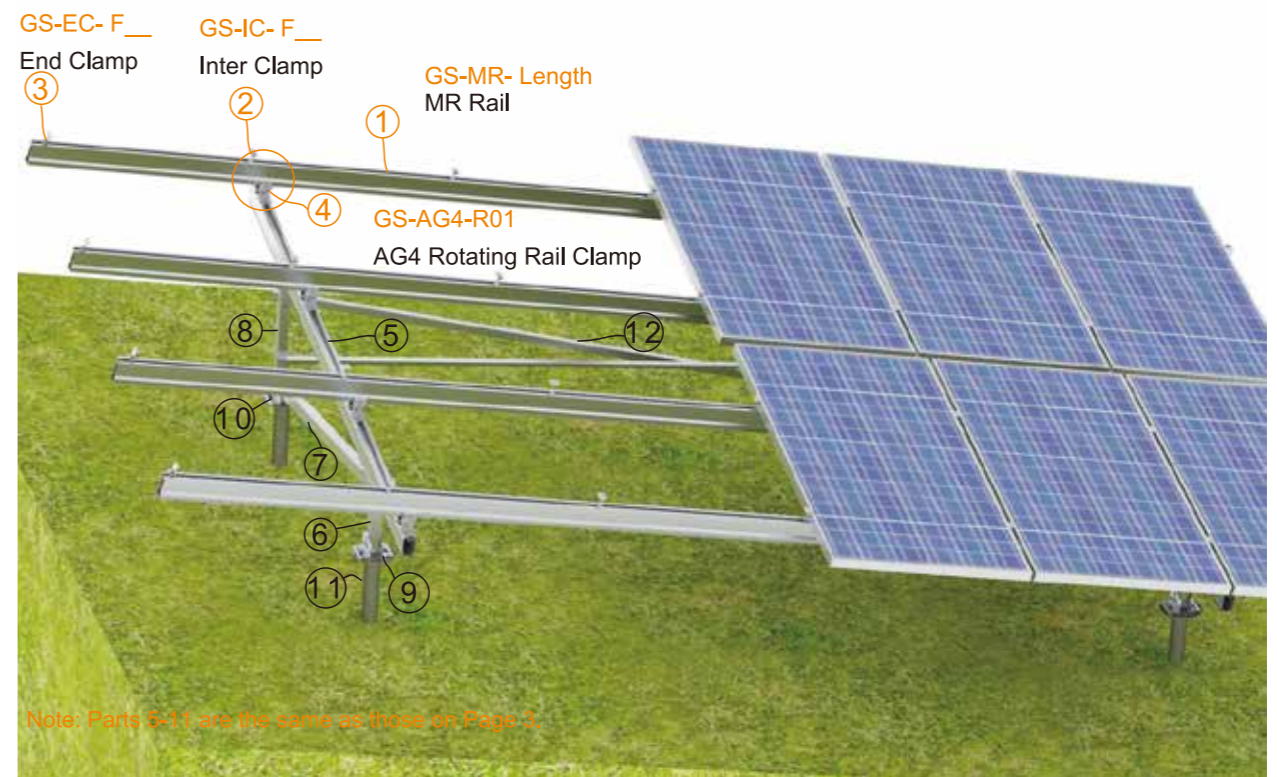
Hill Application



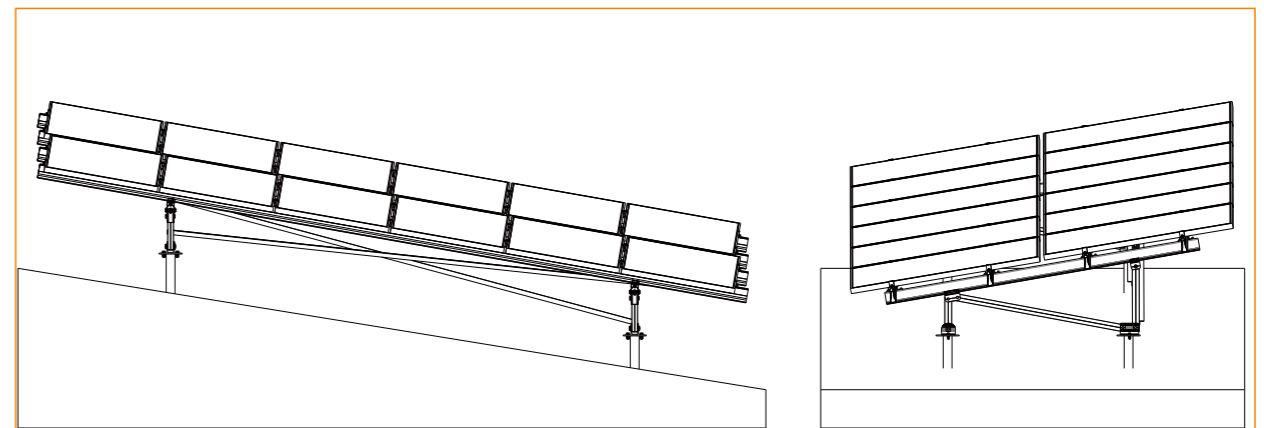
Pre-assembly in the factory



Golf Course Application



Note: Parts 5-11 are the same as those on Page 2.



Completed Project Image



AG4 + Ground Screw, Pile Machine



East-West Slope, AG4 + Ground Screw, 1.16MW

Completed Project Image



Snow Region Solution



Salt Injury Area Solution

AL FARM PV MOUNTING SYSTEM

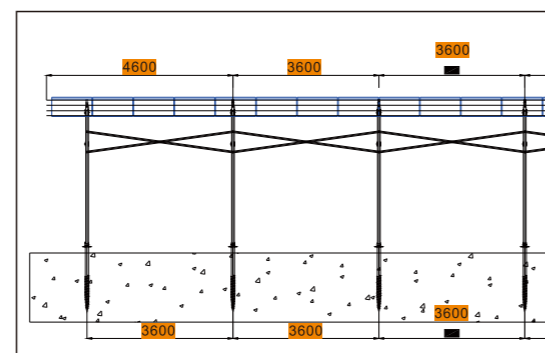
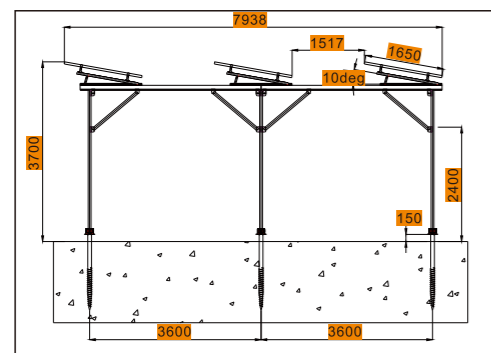
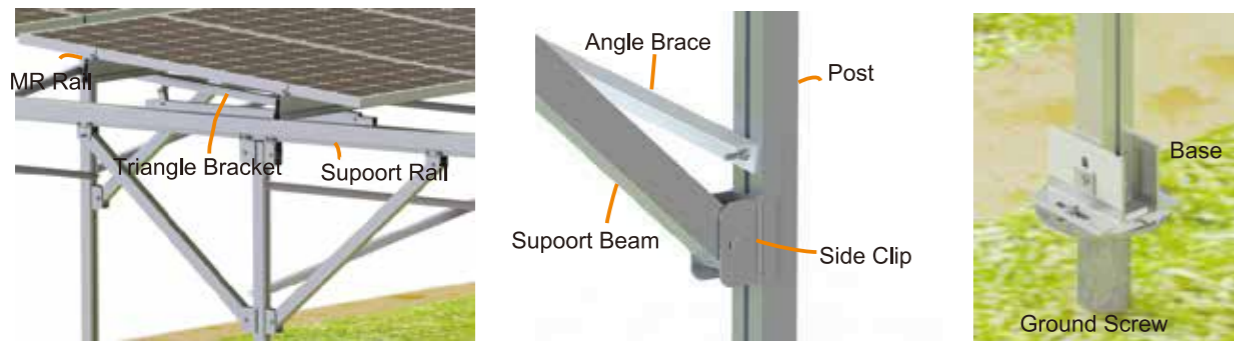
Application ① Flat Type

Light Transmittance 20% – 30%



Product Features

1. 100% aluminum
2. aesthetic appearance, strong and easy-installed
3. high flexibility
4. 10 years quality warranty



Gracesolar Standard Pattern

Project Information

| | | | |
|------------------|---------------|----------------|---------|
| Solar Panel Size | 1650x992x40mm | Height | 2500 mm |
| Power | 260 W | N-S Span | 3600 mm |
| Tilt Angle | 10° | E-W Span | 3600 mm |
| Unit Array | 3x16 | Power/Unit | 12480w |
| Max Snow Load | ≤50cm | Max Wind Speed | ≤38m/s |

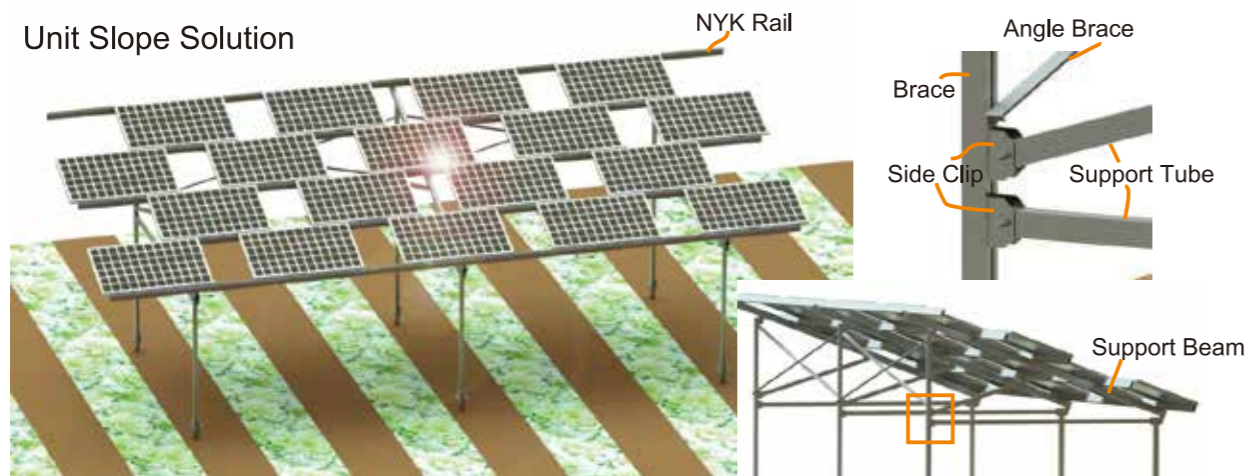
| Item | Description | Spec. | Qty |
|------------------|-------------------------|--------------|--------|
| GS-MR-4600 | MR Rail | 4600 mm | 12 pcs |
| GS-MR-3600 | MR Rail | 3600 mm | 12 pcs |
| GS-MR-SP | MR Rail Splice | 400 mm | 18 pcs |
| GS-MR-C60 | MR Rail Clamp | 60 mm | 60 pcs |
| GS-IC-F40 | Inter Clamp | 40 mm | 90 pcs |
| GS-EC-F40 | End Clamp | 40 mm | 12 pcs |
| GS-NT01-10 | NT Triangle Bracket 10° | 10° | 15 pcs |
| GS-DM-25-A | D Clamp | M8 | 60 pcs |
| GS-AG4-BA38-2H2R | AG4 Support Beam | 3800 mm | 10 pcs |
| GS-AG3-T-1250 | Support Tube | 1250 mm | 20 pcs |
| GS-KT-H110 | NVR Clip | 110 mm | 40 pcs |
| GS-AG4-KT-3000 | Brace | 3000 mm | 15 pcs |
| GS-AG-B-21 | AG Base | 160 mm | 15 pcs |
| GS-AS40-M8-3680 | Angle Brace | 3680 mm | 24 pcs |
| GS-FA-S830 | Hexagon Bolt | M8*30 | 60 pcs |
| GS-F76C-1600-T3 | Grand Screw | 76x1600xT3x2 | 15 pcs |

Project Image



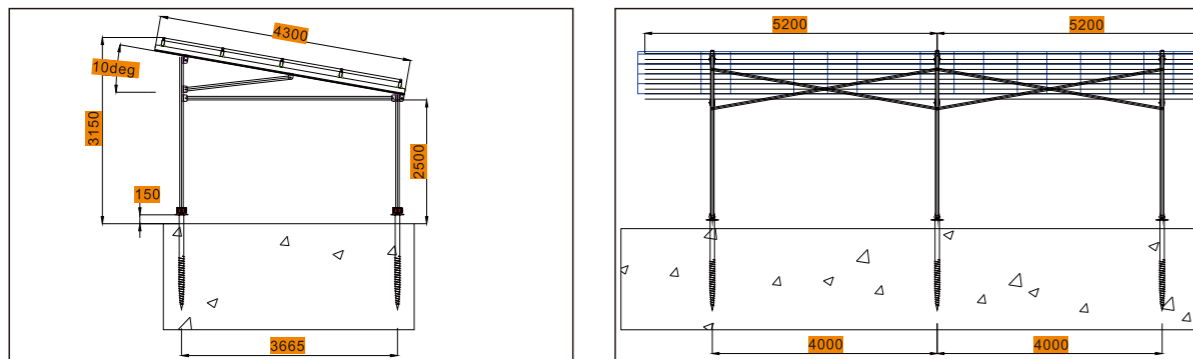
Application ② Slope Type

Unit Slope Solution

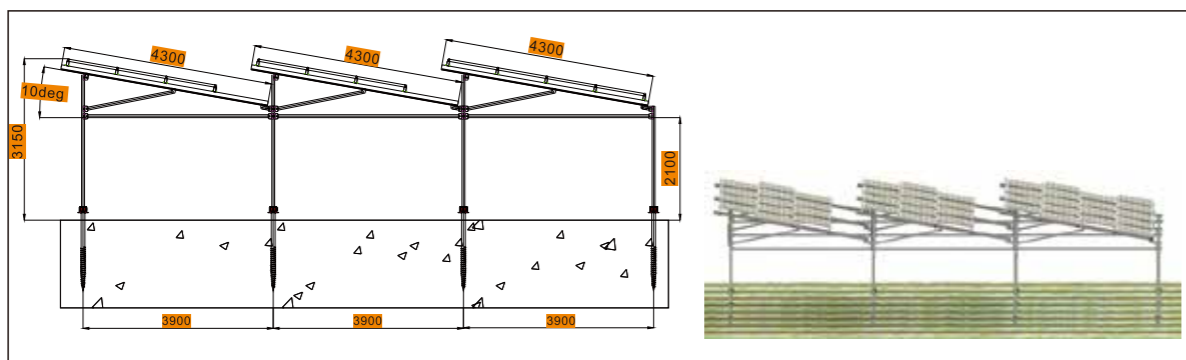


Product Features Light Transmittance 26%

1. 100% aluminum
2. aesthetic appearance, strong and easy-installed
3. high flexibility
4. 10 years quality warranty



Side View



Gracesolar Standard Pattern – Panel Staggered

Project Information

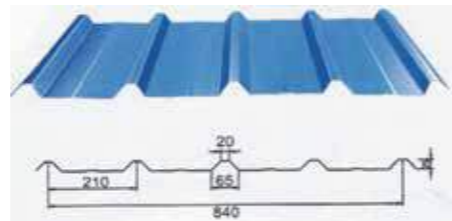
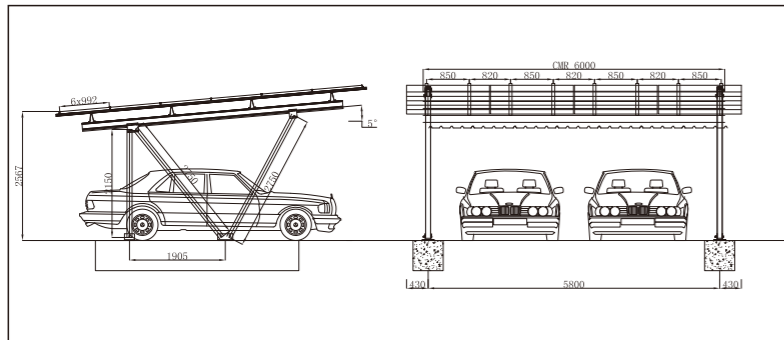
| | | | |
|------------------|---------------|----------------|---------|
| Solar Panel Size | 1650x992x40mm | Height | 2500 mm |
| Power | 260 W | N-S Span | 3663 mm |
| Tilt Angle | 10° | E-W Span | 4000 mm |
| Unit Array | 4x5 | Power/Unit | 4680w |
| Max Snow Load | ≤50cm | Max Wind Speed | ≤38m/s |

| Item | Description | Spec. | Qty |
|-----------------|------------------|--------------|--------|
| GS-NKY-5000 | NYK Rail | 5000 mm | 10 pcs |
| GS-NKY-SP | NYK Rail Splice | 400 mm | 5 pcs |
| GS-MR-C60 | MR Rail Clamp | 60 mm | 30 pcs |
| GS-KIC-F35/40 | Inter Clamp | 35-40 | 24 pcs |
| GS-KEC-F40 | End Clamp | 40 mm | 22 pcs |
| GS-AG4-BA43-H2R | AG4 Support Beam | 4300 mm | 3 pcs |
| GS-AG3-T-1830 | N-S Span Brace 1 | 1830 mm | 3 pcs |
| GS-AG3-T-3550 | N-S Span Brace 2 | 3550 mm | 3 pcs |
| GS-AG4-KT-2500 | Front Leg, Tube | 2500 mm | 3 pcs |
| GS-AG4-KT-3150 | Back Leg, Tube | 3150 mm | 3 pcs |
| GS-KT-H110 | NVR Clip | 110 mm | 15 pcs |
| GS-AG-B-21 | AG Base | 160mm | 6 pcs |
| GS-AS40-M8-4100 | Angle Brace | 4100 mm | 4 pcs |
| GS-FA-S830 | Hexagon Bolt | M8*30 | 6 pcs |
| GS-F76C-1600-T3 | Grand Screw | 76x1600xT3x2 | 6 pcs |

Project Image



GS CARPORT PV MOUNTING SYSTEM



Roof Type Reference

Introduction

This highly pre-assembly carport mounting system is made with high-strength aluminum alloy to ensure its safety and at the same time offer installation convenience and aesthetic appearance. Grace Solar Carport PV Mounting System utilizes a special structure design which maximizes the space by adopting two cars as a unit or free combination upon request. It is 10 years quality warranty.

Technical Information

- Install Site: Open Field
- Max Wind Speed: 42m/s
- Snow Load: 50cm
- Module Type: With Frame
- Module Orientation: Portrait
- Materials: Aluminum Alloy
- Finishing: Anodizing
- Foundation: Concrete

If you would like a site visit, please contact Grace Solar.

Grace Solar Standard Pattern

Project Information

| | | | |
|------------------|---------------|----------------|---------|
| Solar Panel Size | 1650x992x40mm | Height | 2500 mm |
| Power | 260 W | N-S Span | 1905 mm |
| Tilt Angle | 5° | E-W Span | 5800 mm |
| Unit Array | 6x4 | Power/Unit | 6240w |
| Max Snow Load | ≤50cm | Max Wind Speed | ≤42m/s |

| Item | Description | Spec. | Qty |
|---------------|-----------------|---------|--------|
| GS-CMR-6000 | CMR Rail | 6000 mm | 4 pcs |
| GS-CMR-C40 | CMR Rail Clamp | 60 mm | 32 pcs |
| GS-DR-3100 | DR Rail L3100mm | 3100 mm | 16 pcs |
| GS-DR-SP | DR Rail Splice | 150 mm | 8 pcs |
| GS-RC-D | DR Rail Clamp | 40 mm | 32 pcs |
| GS-IC-F40 | Inter Clamp | 40 mm | 40 pcs |
| GS-EC-F40 | End Clamp | 40 mm | 16 pcs |
| GS-CVR-5200 | Support Beam | 5200 mm | 2 pcs |
| GS-T100-2150 | Square Pipe | 2150 mm | 2 pcs |
| GS-T100-2750 | Square Pipe | 2750 mm | 2 pcs |
| GS-T100-2750 | Square Pipe | 2750 mm | 2 pcs |
| GS-CA-B01 | Base | 200-300 | 2 pcs |
| GS-TR840-3000 | T Roof | 3000 mm | 14 pcs |

Project Image



Double-Post Mounting System



Portrait

Grace Solar, your best choice!

Product Introduction

Double-Post Mounting System is applicable for large-scale ground power plant in all kinds of terrains. It takes the open carbon steel section as the support brace. Assisted by the pile machine for piling, this system can increase at least 50% of the installation speed compared to the ground screw mounting, and at the same time leave out the step of connecting the foundation and the brace. Double-Post Mounting System makes installation much easier and tremendously save your time and labor cost. The rotating Top Cap can rotate for three orientations in wide-angle and suitable for any slope or wavy ground.

Technical Information

| | |
|--------------------|------------------------|
| Install Site | Open Field |
| Tilt Angle | 0~45 deg |
| Building Height | Up to 4m |
| Max Wind Speed | 46m/s (JIS) |
| Max Snow Load | 1.4KN/m2 |
| Standards | JIS C 8955:2011 |
| Warranty | 10 Years Warranty |
| Main Rail Material | High-strength Aluminum |
| Brace Material | Carbon Steel |
| Fasten Material | SUS A2-70 |

| | |
|------------|--------------------------|
| Finish | Anodized |
| | Hot-dip Galvanized Steel |
| Foundation | Carbon Steel Post Piling |
| | Concrete |



Landscape

Functions and Features

Adjustable Top Cap

Three Orientational Rotation Sketch



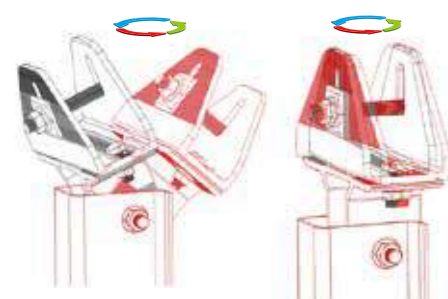
Side View



Front View



Top View

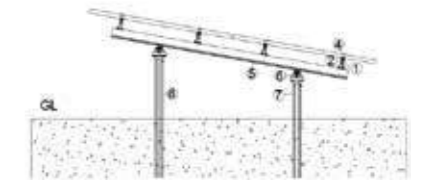
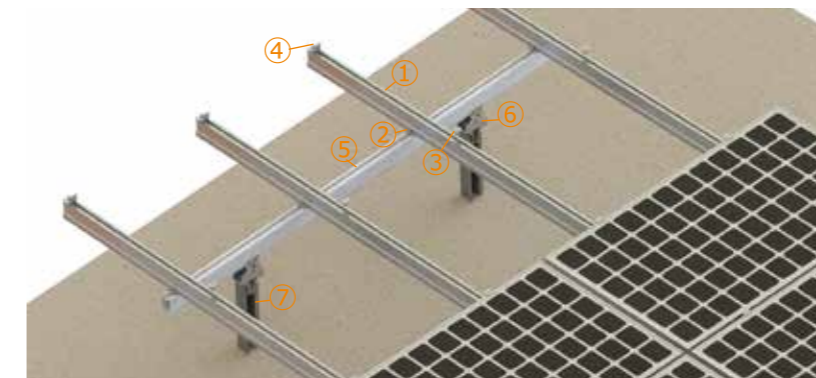


Post Construction Requirements

| | | |
|-------------------|-----------------------------------|---------------------------------|
| Height Deviation | Angular Deviation (North - South) | Angular Deviation (East - West) |
| $\pm 10\text{mm}$ | $\pm 2 \text{ deg}$ | $\pm 2 \text{ deg}$ |

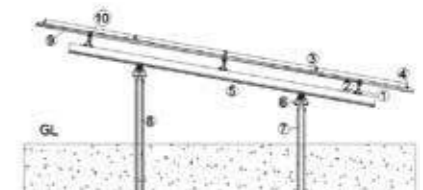
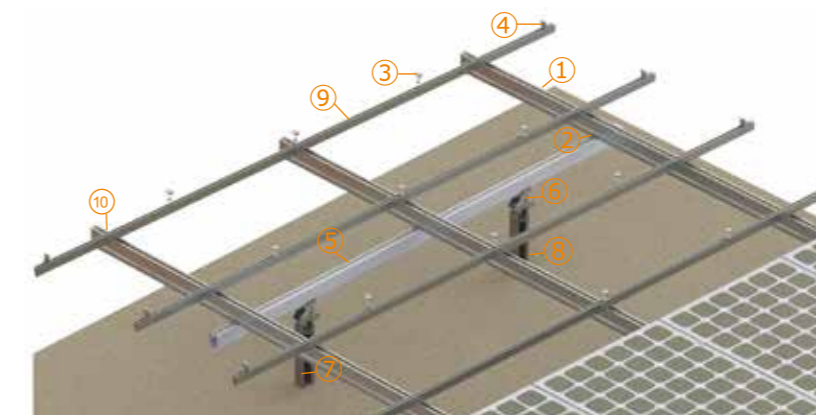
Application

Portrait Placement



| Item | Description | Material | Finish |
|---------------|----------------------|--------------|--------------------|
| GS-MR-Length | MR Main Rail | AL6005-T5 | Anodized |
| GS-MR-C60 | MR Rail Splice | AL6005-T5 | Anodized |
| GS-IC-F | Inter Clamp | AL6005-T5 | Anodized |
| GS-EC-F | End Clamp | AL6005-T5 | Anodized |
| GS-AG4-B27-2R | Assembly of AG4 Beam | AL6005-T5 | Anodized |
| GS-PG02-TC | Assembly of Top Cap | AL6005-T5 | Anodized |
| GS-PG02-OPXXX | Front Open Post | Carbon Steel | Hot-dip Galvanized |
| GS-PG02-OPXXX | Back Open Post | Carbon Steel | Hot-dip Galvanized |

Landscape Placement



| Item | Description | Material | Finish |
|---------------|----------------------|--------------|--------------------|
| GS-MR-Length | MR Main Rail | AL6005-T5 | Anodized |
| GS-MR-C60 | MR Rail Splice | AL6005-T5 | Anodized |
| GS-IC-F | Inter Clamp | AL6005-T5 | Anodized |
| GS-EC-F | End Clamp | AL6005-T5 | Anodized |
| GS-AG4-B27-2R | Assembly of AG4 Beam | AL6005-T5 | Anodized |
| GS-PG02-TC | Assembly of Top Cap | AL6005-T5 | Anodized |
| GS-PG02-OPXXX | Front Open Post | Carbon Steel | Hot-dip Galvanized |
| GS-PG02-OPXXX | Back Open Post | Carbon Steel | Hot-dip Galvanized |
| GS-DR-Length | DR Main Rail | AL6005-T5 | Anodized |
| GS-RC-D | DR Rail Splice | AL6005-T5 | Anodized |

PILE GROUND MOUNTING SYSTEM



Introduction

GS Pile Ground System is applied for large commercial and utility PV systems on non-sandy ground, suitable for both framed and frameless module installation.

In GS Pile Ground System, Open Post can be piled into the ground quickly 1-2 meters by pile machine, and then easily mounting the pre-assembled Al-Beam structure, GS Rail with clamps.

Our mission is to simplify your installation and ensure the structure safety. Grace Solar, your best choice.

Benefits

❖ Easy Installation

Parts have been highly pre-assembled in the factory to save your installation time

❖ Safety and Reliability

Structure has been checked and tested strictly to against the extreme weather condition

❖ Flexibility and Adjustable

Smart design reduces the difficulties in the installation on most conditions

❖ 10 Years Warranty

10-years warranty for the material and structure is provided by Grace Solar

Technical Information

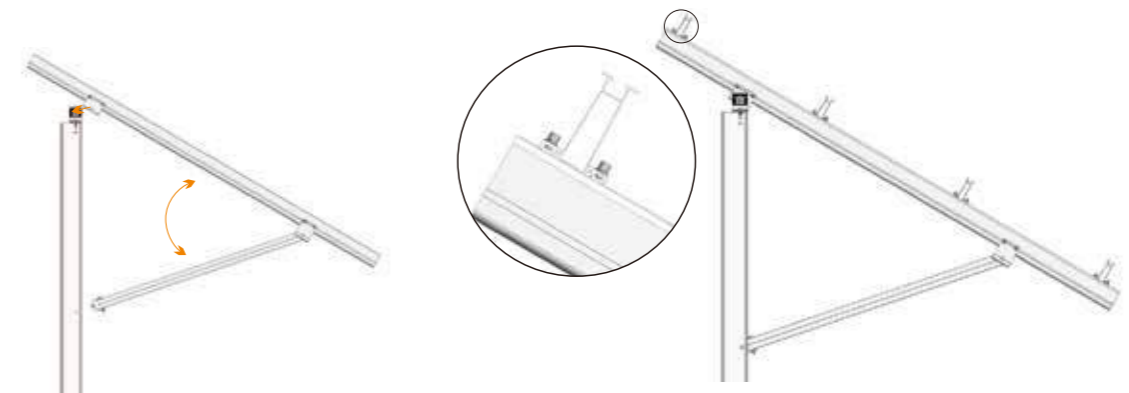
| | |
|----------------------|--------------------------------|
| Install Site | Open Field, non Sandy |
| Angle of Inclination | 0-45° |
| Structure Height | 3m Less |
| Max Wind Speed | up to 60m/s |
| Snow Load | 1.4KN/m ² |
| Rail Material | Aluminum Alloy |
| Post Material | Hot-dip Galvanized Steel Q235 |
| Finishing | Anodized |
| Adjustability | Post Height Deviation: 10mm |
| | Post Angle Deviation: 2° |
| | Post Verticality Deviation: 2° |
| Pile Driving Depth | 1000~2000mm |

INSTALLATION STEPS



Step 1: Pile the Open Post by Pile Machine

Step 2: Install and adjust the Top Cap

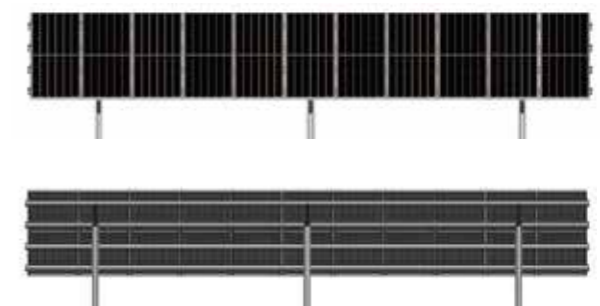


Step 3: Install the Assembly of Beam

Step 4: Install the Rail by Rail Clamp



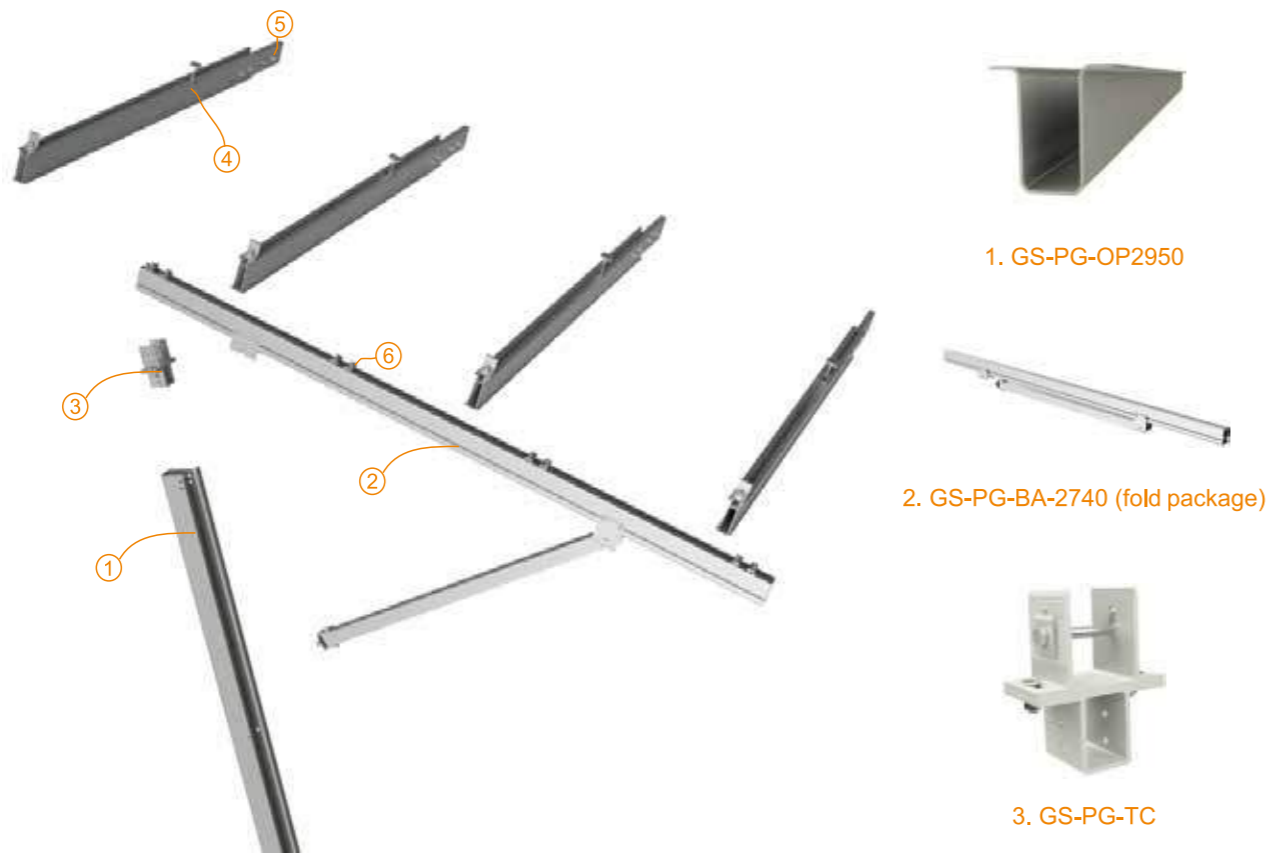
Step 5: Install the Modules



Finish

COMPONENTS

System Overview



1. GS-PG-OP2950



2. GS-PG-BA-2740 (fold package)



3. GS-PG-TC



4. GS-MR-Length



5. GS-MR-SP



6. GS-MR-C60

| Item No. | Description |
|--------------|------------------|
| GS-PG-OP2950 | Open Post 2950mm |

Material: Q235 Steel

| | |
|-----------------|--|
| GS-PG-TC | Assembly of Top Cap |
| GS-PG-BA30-2740 | Assembly of PG Beam, 30deg, 2740 - For module length 1400~1700mm - High pre-assembly |
| GS-MR-Length | GS MR Rail |
| GS-MR-SP | GS MR Rail Splice |
| GS-MR-C60 | GS MR Rail Clamp |

Material: Aluminum Alloy 6005-T5

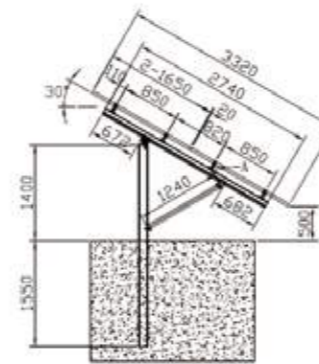
PROJECT EXAMPLE

Project Information

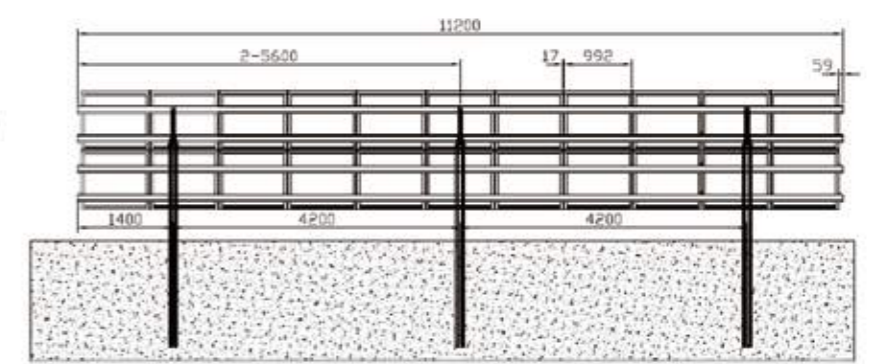
| | |
|---------------------|---------------------|
| Solar Panel Size: | 1650*992*46mm |
| Tilt Angle: | 30 Deg |
| Module Orientation: | Portrait |
| Unit Array: | 2*11 (22pcs panels) |

| | |
|-----------------|-----------|
| Flood Height: | 500mm |
| Wind Speed: | <45m/s |
| Soil Condition: | Non Sandy |
| Pile Height: | 1500mm |

2D Planning Drawing



Side View



Front View

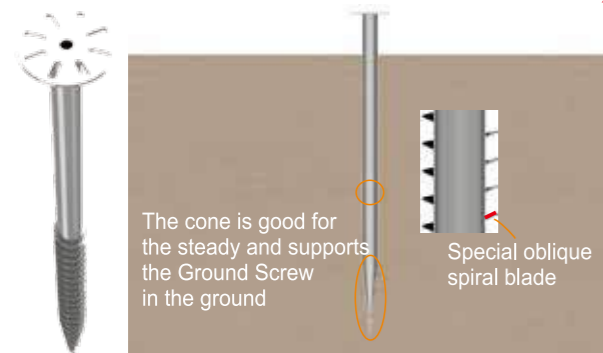
Components List

| Item | Description | Spec. | Qty | Package |
|-----------------|------------------------|--------|-------|-----------------------|
| GS-MR-5600 | GS MR Rail 5600 | 5600mm | 8pcs | 148pcs/Pallet |
| GS-MR-SP | GS MR Rail Splice | 400mm | 4pcs | 9pcs/Box,2Boxes/CTN |
| GS-MR-C60 | GS MR Rail Clamp | 60mm | 24pcs | 100pcs/Box,4Boxes/CTN |
| GS-IC-F46 | Inter Clamp Kit | 46mm | 40pcs | 100pcs/Box,4Boxes/CTN |
| GS-EC-F46 | End Clamp Kit | 46mm | 8pcs | 100pcs/Box,4Boxes/CTN |
| GS-PG-BA30-2740 | Assembly of PG #2 Beam | 30° | 3pcs | 120pcs/Pallet |
| GS-PG-TC | Aluminum Top Cap | 80mm | 3pcs | 8pcs/Box,2Boxes/CTN |
| GS-PG-OP2950 | Open Post 2950 | 2950mm | 3pcs | 45pcs/Pallet |

GROUND SCREW



Quick & Steady

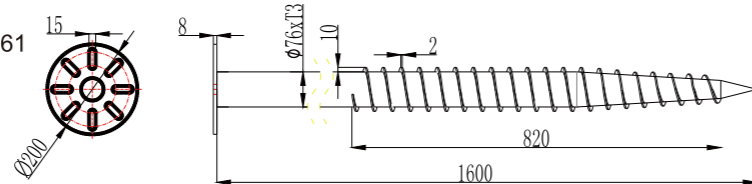


Introduction

GS Ground Screw is the new foundation type for the PV ground mounting system. This solution is applied widely. It can minimize the impact on the environment; it is easy and fast on installation, greatly saving the installation time and cost. GS Ground Screw has a unique oblique spiral design, which greatly ensures the stability and robustness when withstanding the static load. GS Ground Screw is surely your best choice.

Features

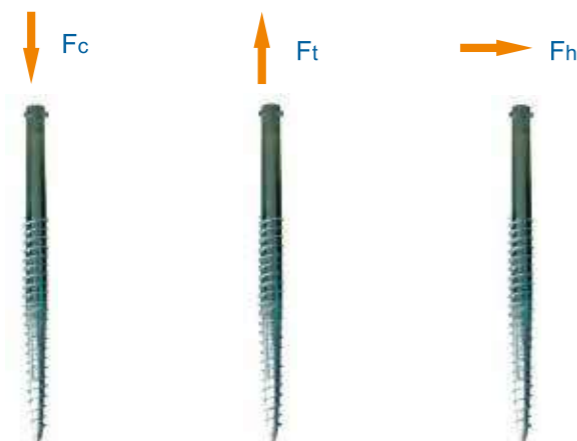
- Item No.: GS-F76C-1600-T3
- Material: Steel, ISO 630 Fe360A
- Surface: Galvanized to DIN EN ISO 1461
- a Length: 1600mm
- b Outer Diameter: 76mm
- c Inner Diameter: 70mm
- d Flange Diameter: 200mm



Cross-section Values and Burdens of GS Ground Screw

| Item No. | Tube Dia mm | Tube Thk mm | Fc KN | Ft KN | Fh KN |
|-----------------|-------------|-------------|-------|-------|-------|
| GS-F76C-1600-T3 | 76 | 3.0 | 32.00 | 20.00 | 8.50 |

Fc: compression force
Ft: tension force
Fh: horizontal force



The screw length can be customized. Standard lengths are 1200mm, 1600mm, 1800mm, 2000mm and 2500mm.

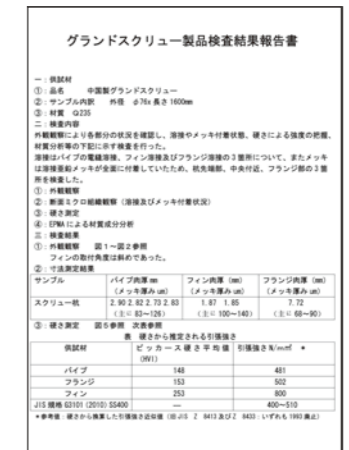
Approval and Certificate



SGS Aluminum Alloy Quality Report



SGS Salt Spray Test Report



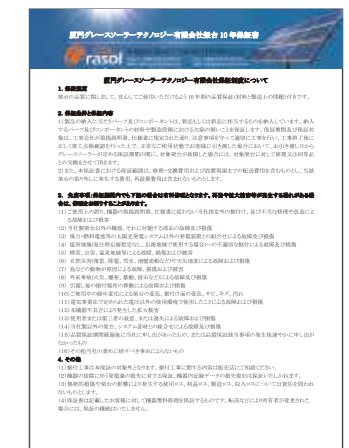
Screw Product Inspection Result Report



Japan Utility Model Registration Certificate



ISO9001:2008



Quality Warranty



TUV Certificate



UK MCS Certificate



Australia AS1170.2 Certificate