

## Product Features

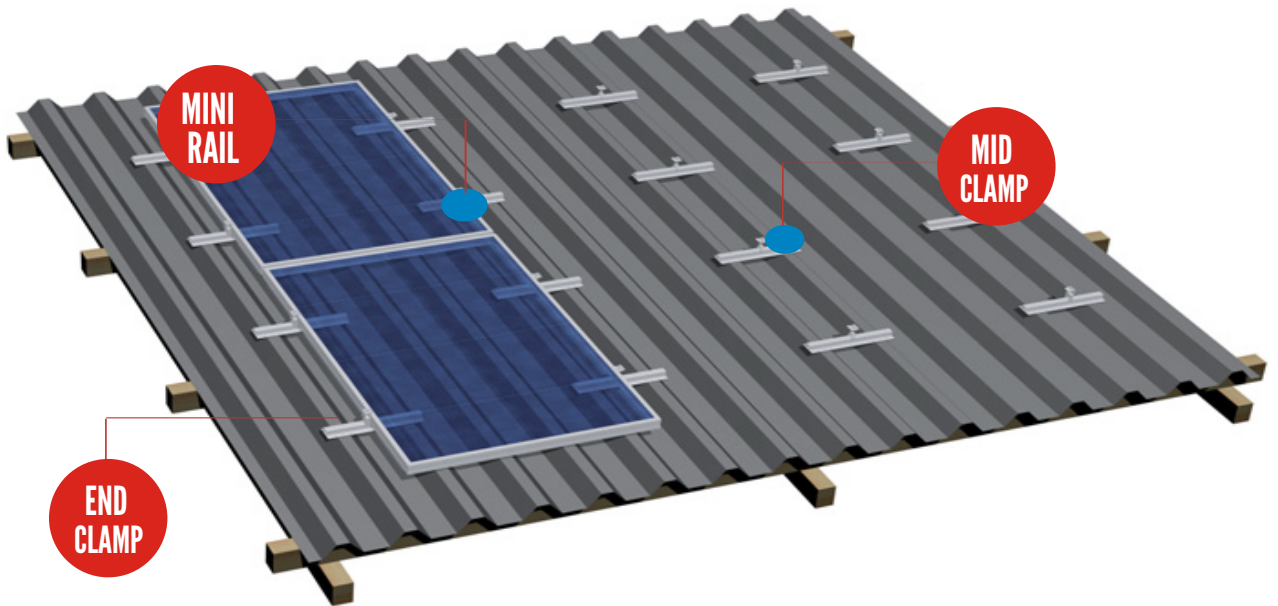
- Widely used for both crystalline modules.
- Easy & quick installation.
- Only 3 kinds of components in whole system fixation.
- All system components are made with high quality aluminum & stainless steel.
- Fit for the seam distance of metal sheet roof  $\leq 250\text{mm}$ .

## Technical Data

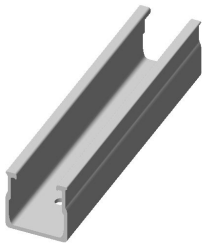
Project site	Trapezoidal and corrugated sheet metal
Slope of roof	Up to 60°
Max Building Height	Up to 20m
Wind Load	60m/s
Snow Load	2.0kn/ m <sup>2</sup>
Applicable Module	Frame / frameless module, crystalline/ thin film module
Module Orientation	Portrait
Standard	AS/NZS 1170, MCS, UL
Material	Stainless steel 304, AL6005-T5



## System Overview



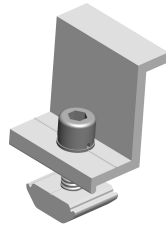
## Key Components



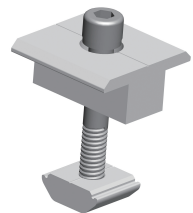
**Mini Rail 400mm  
(without holes)**



**Wooden Screw**

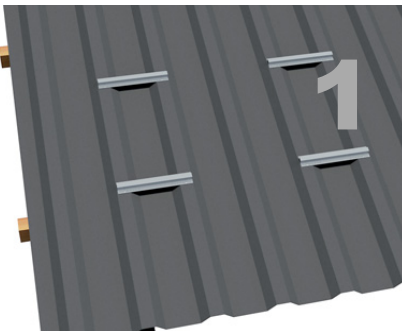


**End Clamp**

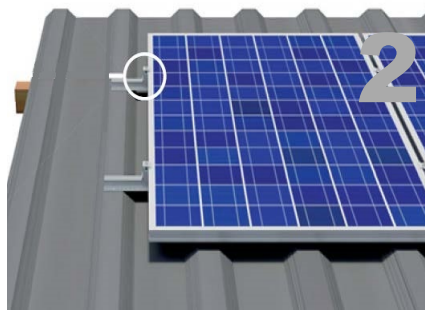


**Mid Clamp**

## Key Components



Fix the mini rails on the seams of the metal roof with 2pcs st6.3\*25 wooden screw.



Fix the modules on the mini rails by end clamps.



Fix the modules on the mini rails by mid clamps.