

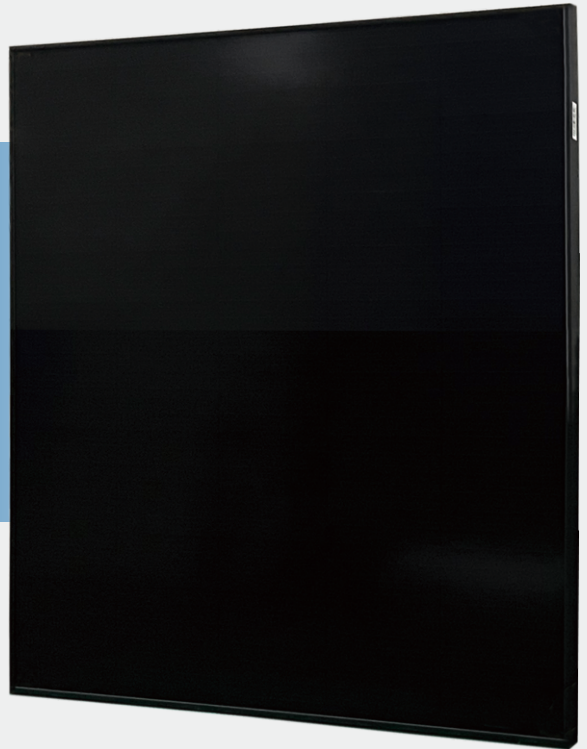


PERLIGHT
smart.black

PLM-175MA

175W DELTA SERIES

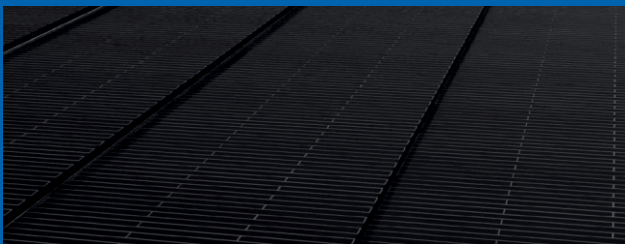
Monocrystalline PERC solar module



5 YEAR WORKMANSHIP WARRANTY

5 YEAR LINEAR POWER OUTPUT WARRANTY

✓ ZERO BUSBAR RIBBON TECHNOLOGY



✓ **NO CELL BUSBAR RIBBONS**

✓ **HIGH DENSITY LAYOUT**

✓ **INCREASED CELL SURFACE AREA**

✓ **GREENER TO THE ENVIRONMENT**

Fluorine-free and low Pb levels, 60% less than conventional modules. Saving 0.3kg of metal ribbon per module by removing cell busbars

✓ BEAUTIFUL APPEARANCE

Ultra-sleek with consistent tone provides a modernised look

✓ PERFORMANCE

Outperforms conventional half-cell technology under shaded conditions, lower operating temperature and more

✓ SAFETY AND RELIABILITY

Lower operating temperature and exceptional performance under mechanical and thermal stress dramatically reduces risks of micro-cracks and hot-spots, improving performance and prolonging module life

Electrical Characteristics at Standard Test Conditions(STC)

Module Type: PLM-175MA	175
Maximum Power-Pm [W]	175
Open Circuit Voltage-Voc [V]	20.98
Short Circuit Current-Isc [A]	10.70
Maximum Power Voltage-Vm [V]	17.06
Maximum Power Current-Im [A]	10.26
Module Efficiency-η [%]	18.30

Electrical Characteristics at NMOT

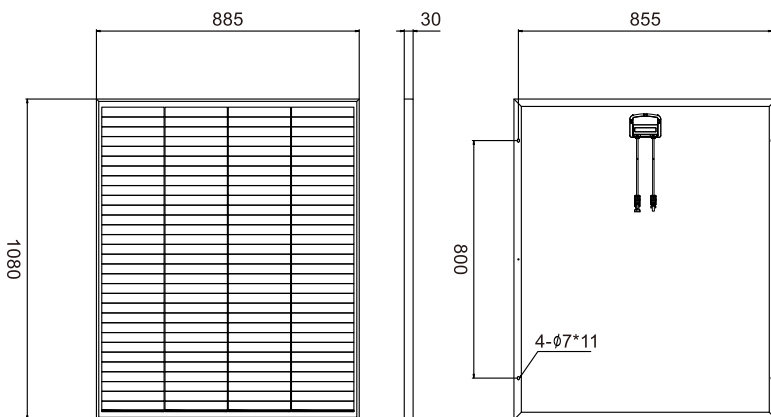
Maximum Power-Pm [W]	132.2
Open Circuit Voltage-Voc [V]	19.64
Short Circuit Current-Isc [A]	8.56
Maximum Power Voltage-Vm [V]	15.97
Maximum Power Current-Im[A]	8.28

Note: 1. Standard Test Conditions(STC): Irradiance 1000W/ m²; AM 1.5; ambient temperature 25°C according to EN 60904-3;
2. Nominal Module Operating Temperature (NMOT): Irradiance 800W/ m²; wind speed 1m/s; ambient temperature 20°C.
3. Tolerance of Pm: 0/+3%, Measuring uncertainty of power: ±3%. Performance deviation of Voc [V], Isc[A], Vm[V] and Im[A]: ±3%.

Mechanical Characteristics

Dimensions	1080×885×30mm (L×W×H)
Weight	11.5kg
Front Glass	Tempered glass, 3.2mm
Frame	Anodized aluminum profile
Cells	Mono-crystalline solar cell
Cell Orientation	124 (4*31)
Junction Box	IP67/IP68, 1 diode
Cable	4mm ² , 900mm (other lengths available)

Module Diagram



Temperature Characteristics

NMOT	42.3°C(±2°C)
Temperature Coefficient of Voc	-0.27%/°C
Temperature Coefficient of Isc	0.04%/°C
Temperature Coefficient of Pm	-0.34%/°C

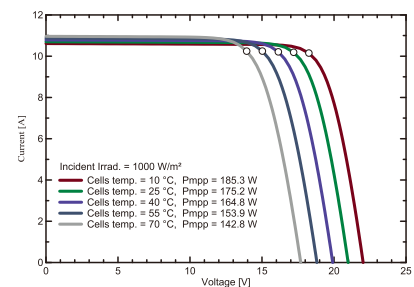
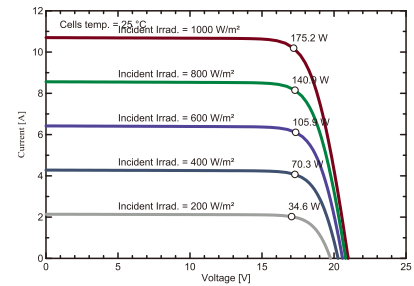
Maximum Ratings

Maximum System Voltage [V]	DC 1500/1000 (IEC)
Series Fuse Rating [A]	20
Maximum Surface Load Capacity [Pa]	5400
Temperature Range [°C]	-40 ~ +85
Withstanding Hail	Maximum diameter of 25mm with impact speed of 23 m·s ⁻¹

Package

Container	40' HQ
Number of pallets per container	24
Number of modules per container	1200

I-V curve



Warranty

5 YEAR WORKMANSHIP WARRANTY

5 YEAR LINEAR POWER OUTPUT WARRANTY



+44 (0)1865 682 584

info@westtech-solar.co.uk

www.westtech-solar.co.uk

Westtech Solar (UK) Ltd
Unit 1, Bobby Fryer Close,
Garsington Road, Oxford,
OX4 6ZN, UK