

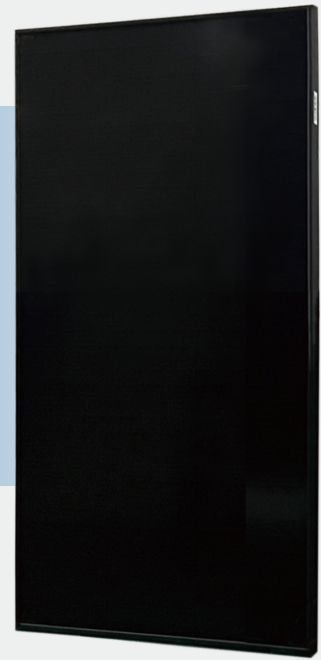


**PERLIGHT**  
smart.black

# PLM-100MA

## 100W DELTA SERIES

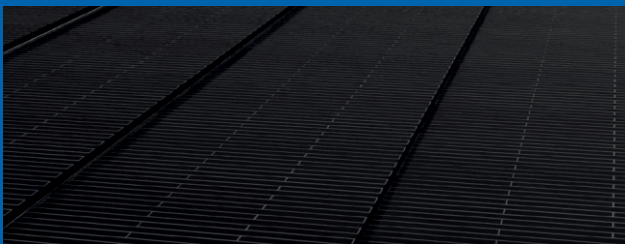
Monocrystalline PERC solar module



**5** YEAR WORKMANSHIP WARRANTY

**5** YEAR LINEAR POWER OUTPUT WARRANTY

### ✓ ZERO BUSBAR RIBBON TECHNOLOGY



✓ **NO CELL BUSBAR RIBBONS**

✓ **HIGH DENSITY LAYOUT**

✓ **INCREASED CELL SURFACE AREA**

✓ **GREENER TO THE ENVIRONMENT**

Fluorine-free and low Pb levels, 60% less than conventional modules. Saving 0.3kg of metal ribbon per module by removing cell busbars

### ✓ BEAUTIFUL APPEARANCE

Ultra-sleek with consistent tone provides a modernised look

### ✓ PERFORMANCE

Outperforms conventional half-cell technology under shaded conditions, lower operating temperature and more

### ✓ SAFETY AND RELIABILITY

Lower operating temperature and exceptional performance under mechanical and thermal stress dramatically reduces risks of micro-cracks and hot-spots, improving performance and prolonging module life

Electrical Characteristics at Standard Test Conditions(STC)

|                               |       |
|-------------------------------|-------|
| Module Type: PLM-100MA        | 100   |
| Maximum Power-Pm [W]          | 100   |
| Open Circuit Voltage-Voc [V]  | 22.51 |
| Short Circuit Current-Isc [A] | 5.70  |
| Maximum Power Voltage-Vm [V]  | 18.15 |
| Maximum Power Current-Im [A]  | 5.51  |
| Module Efficiency-η [%]       | 18.60 |

Electrical Characteristics at NMOT

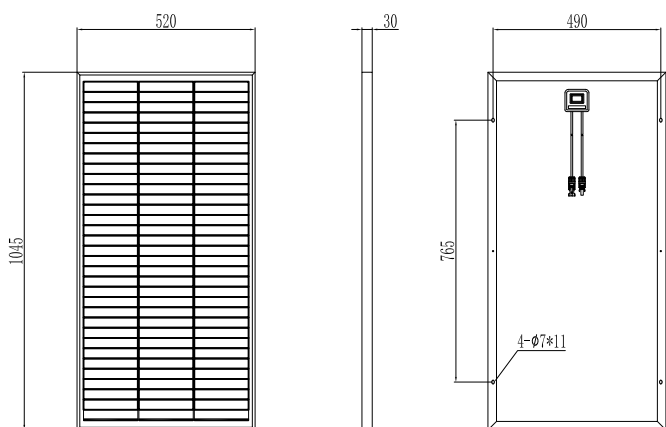
|                               |       |
|-------------------------------|-------|
| Maximum Power-Pm [W]          | 75.5  |
| Open Circuit Voltage-Voc [V]  | 21.08 |
| Short Circuit Current-Isc [A] | 4.56  |
| Maximum Power Voltage-Vm [V]  | 17.00 |
| Maximum Power Current-Im[A]   | 4.44  |

Note: 1. Standard Test Conditions(STC): Irradiance 1000W/ m<sup>2</sup>; AM 1.5; ambient temperature 25°C according to EN 60904-3;  
2. Nominal Module Operating Temperature (NMOT): Irradiance 800W/ m<sup>2</sup>; wind speed 1m/s; ambient temperature 20°C.  
3. Tolerance of Pm: 0/+3%, Measuring uncertainty of power: ±3%. Performance deviation of Voc [V], Isc[A], Vm[V] and Im[A]: ±3%.

Mechanical Characteristics

|                  |  |
|------------------|--|
| Dimensions       | 1045 × 520 × 30mm (L×W×H)                          |
| Weight           | 6.5 kg   |
| Front Glass      | Tempered glass, 3.2mm                              |
| Frame            | Anodized aluminum profile                          |
| Cells            | Mono-crystalline solar cell                        |
| Cell Orientation | 99 (3* 32)   |
| Junction Box     | IP67/IP68, 1 diode                                 |
| Cable            | 4mm <sup>2</sup> , 900mm (other lengths available) |

Module Diagram



Temperature Characteristics

|                                |              |
|--------------------------------|--------------|
| NMOT                           | 42.3°C(±2°C) |
| Temperature Coefficient of Voc | -0.27%/°C    |
| Temperature Coefficient of Isc | 0.04%/°C     |
| Temperature Coefficient of Pm  | -0.34%/°C    |

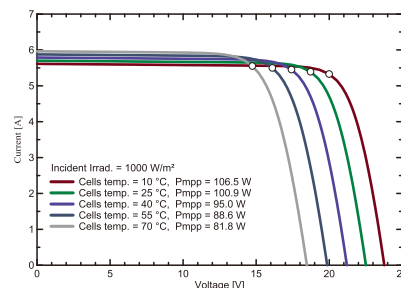
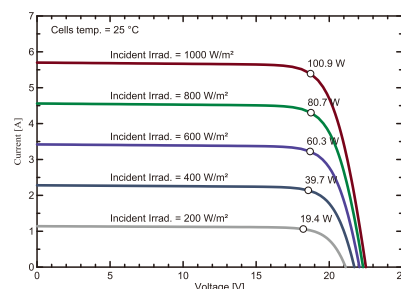
Maximum Ratings

|                                    |  |
|------------------------------------|--|
| Maximum System Voltage [V]         | DC 1500/1000 (IEC)   |
| Series Fuse Rating [A]             | 10   |
| Maximum Surface Load Capacity [Pa] | 5400   |
| Temperature Range [°C]             | -40 ~ +85  |
| Withstanding Hail                  | Maximum diameter of 25mm with impact speed of 23 m·s <sup>-1</sup> |

Package

|                                 |        |
|---------------------------------|--------|
| Container                       | 40' HQ |
| Number of pallets per container | 20     |
| Number of modules per container | 2000   |

I-V curve



Warranty

5 YEAR WORKMANSHIP WARRANTY

5 YEAR LINEAR POWER OUTPUT WARRANTY



+44 (0)1865 682 584

info@westtech-solar.co.uk

www.westtech-solar.co.uk

Westtech Solar (UK) Ltd  
Unit 1, Bobby Fryer Close,  
Garsington Road, Oxford,  
OX4 6ZN, UK