

Form A2-3: Compliance Verification Report for Inverter Connected Power Generating Modules

This form should be used by the **Manufacturer** to demonstrate and declare compliance with the requirements of EREC G99. The form can be used in a variety of ways as detailed below:

1. To obtain **Fully Type Tested** status

The **Manufacturer** can use this form to obtain **Fully Type Tested** status for a **Power Generating Module** by registering this completed form with the Energy Networks Association (ENA) Type Test Verification Report Register.

2. To obtain **Type Tested** status for a product

This form can be used by the **Manufacturer** to obtain **Type Tested** status for a product which is used in a **Power Generating Module** by registering this form with the relevant parts completed with the Energy Networks Association (ENA) Type Test Verification Report Register.

3. One-off Installation

This form can be used by the **Manufacturer** or **Installer** to confirm that the **Power Generating Module** has been tested to satisfy all or part of the requirements of this EREC G99. This form must be submitted to the **DNO** as part of the application.

A combination of (2) and (3) can be used as required, together with Form A2-4 where compliance of the **Interface Protection** is to be demonstrated on site.

Note:

Within this Form A2-3 the term **Power Park Module** will be used but its meaning can be interpreted within Form A2-3 to mean **Power Park Module, Generating Unit or Inverter** as appropriate for the context. However, note that compliance must be demonstrated at the **Power Park Module** level.

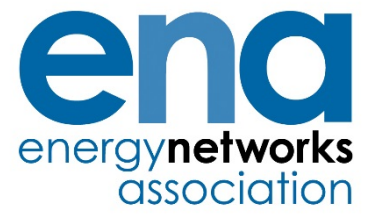
If the **Power Generating Module** is **Fully Type Tested** and registered with the Energy Networks Association (ENA) Type Test Verification Report Register, the Installation Document (Form A3) should include the **Manufacturer's** reference number (the Product ID), and this form does not need to be submitted.

Where the **Power Generating Module** is not registered with the ENA Type Test Verification Report Register or is not **Fully Type Tested** this form (all or in parts as applicable) needs to be completed and provided to the **DNO**, to confirm that the **Power Generating Module** has been tested to satisfy all or part of the requirements of this EREC G99.

PGM technology		Growatt: 17000TL3-S,17000TL3-SE, 18000UE, 20000UE,20000TL3-SE,25000TL3-S,25000TL3-SE,30000TL3-S,30000TL3-SE, 30000UE,33000TL3-S,33000TL3-SE,33000UE,40000TL3-NS,40000TL3-NSE,50000TL3-S,50000TL3-SE	
Manufacturer name		Growatt New Energy Technology Co., Ltd.	
Address		1st East & 3rd Floor of Building A,Building B, Jiayu Industrial Park,#28,GuangHui Road,LongTeng Community,Shiyan Street,Baoan,District,Shenzhen, P.R.China	
Tel	+86 755 2951 5888	Web site	www.ginverter.com
E:mail	yunzhong.cai@growatt.com		

Engineering Recommendation G99 Form A2-3

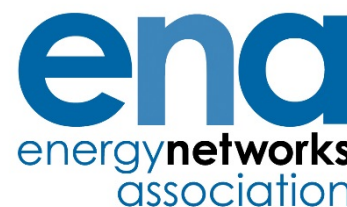
Type A Power Generating Modules



Registered Capacity	50kW
----------------------------	------

Engineering Recommendation G99 Form A2-3

Type A Power Generating Modules



There are four options for Testing: (1) **Fully Type Tested**, (2) **Partially Type Tested**, (3) one-off installation, (4) tested on site at time of commissioning. The check box below indicates which tests in this Form have been completed for each of the options. With the exception of **Fully Type Tested PGMs** tests marked with * may be carried out at the time of commissioning (Form A4).

Tested option:	1. Fully Type Tested	2. Partially Type Tested	3. One-off Man. Info.	4. Tested on Site at time of Commissioning
0. Fully Type Tested - all tests detailed below completed and evidence attached to this submission		N/A	N/A	N/A
1. Operating Range	N/A			
2. PQ – Harmonics				
3. PQ – Voltage Fluctuation and Flicker				
4. PQ – DC Injection (Power Park Modules only)				
5. Power Factor (PF)*				
6. Frequency protection trip and ride through tests*				
7. Voltage protection trip and ride through tests*				
8. Protection – Loss of Mains Test*, Vector Shift and RoCoF Stability Test*				
9. LFSM-O Test*				
10. Protection – Reconnection Timer*				
11. Fault Level Contribution				
12. Self-monitoring Solid State Switch				
13. Wiring functional tests if required by para 15.2.1 (attach relevant schedule of tests)*				
14. Logic Interface (input port)*				

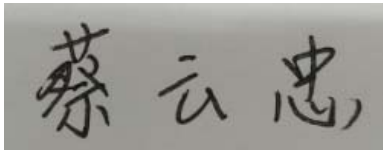
* may be carried out at the time of commissioning (Form A.2-4).

Document reference(s) for **Manufacturers' Information:**

Engineering Recommendation G99 Form A2-3

Type A Power Generating Modules

Manufacturer compliance declaration. - I certify that all products supplied by the company with the above **Type Tested Manufacturer's** reference number will be manufactured and tested to ensure that they perform as stated in this document, prior to shipment to site and that no site **Modifications** are required to ensure that the product meets all the requirements of EREC G99.

Signed		On behalf of	Growatt New Energy Technology Co., Ltd
--------	---	--------------	--

Note that testing can be done by the **Manufacturer** of an individual component or by an external test house.

Where parts of the testing are carried out by persons or organisations other than the **Manufacturer** then that person or organisation shall keep copies of all test records and results supplied to them to verify that the testing has been carried out by people with sufficient technical competency to carry out the tests.

A2-3 Compliance Verification Report –Tests for Type A Inverter Connected Power Generating Modules – test record

1. Operating Range: Two tests should be carried with the **Power Generating Module** operating at **Registered Capacity** and connected to a suitable test supply or grid simulation set. The power supplied by the primary source shall be kept stable within $\pm 5\%$ of the apparent power value set for the entire duration of each test sequence.

Frequency, voltage and **Active Power** measurements at the output terminals of the **Power Generating Module** shall be recorded every second. The tests will verify that the **Power Generating Module** can operate within the required ranges for the specified period of time.

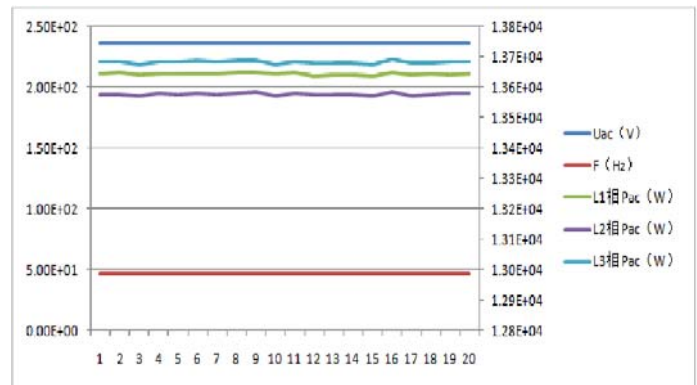
The **Interface Protection** shall be disabled during the tests.

In case of a PV **Power Park Module** the PV primary source may be replaced by a DC source.

In case of a full converter **Power Park Module** (eg wind) the primary source and the prime mover **Inverter/rectifier** may be replaced by a DC source.

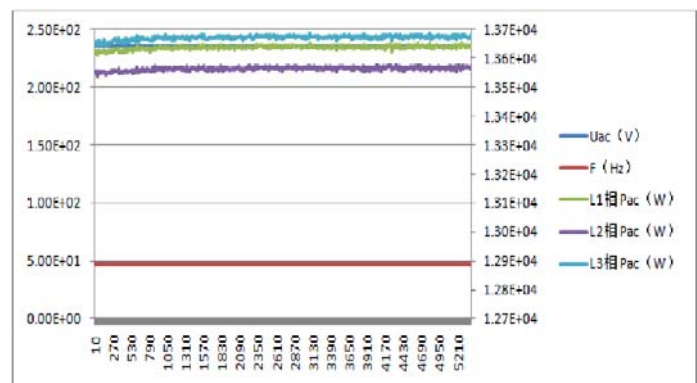
Test 1

Voltage = 85% of nominal (235.5 V),
 Frequency = 47 Hz,
Power Factor = 1,
 Period of test 20 s



Test 2

Voltage = 85% of nominal (235.5 V),
 Frequency = 47.5 Hz,
Power Factor = 1,
 Period of test 90 minutes



<p>Test 3 Voltage = 110% of nominal (304.7 V), Frequency = 51.5 Hz, Power Factor = 1, Period of test 90 minutes</p>	
<p>Test 4 Voltage = 110% of nominal (304.7 V), Frequency = 52.0 Hz, Power Factor = 1, Period of test 15 minutes</p>	

2. Power Quality – Harmonics:

For **Power Generating Modules** of **Registered Capacity** of less than 75 A per phase (ie 50 kW) the test requirements are specified in Annex A.7.1.5. These tests should be carried out as specified in BS EN 61000-3-12 The results need to comply with the limits of Table 2 of BS EN 61000-3-12 for single phase equipment and Table 3 of BS EN 61000-3-12 for three phase equipment.

Power Generating Modules with emissions close to the limits laid down in BS EN 61000-3-12 may require the installation of a transformer between 2 and 4 times the rating of the **Power Generating Module** in order to accept the connection to a **Distribution Network**.

For **Power Generating Modules** of **Registered Capacity** of greater than 75 A per phase (ie 50 kW) the installation must be designed in accordance with EREC G5.

Power Generating Module tested to BS EN 61000-3-12

<p>Power Generating Module rating per phase (rpp)</p>	<p>5.67</p>	<p>kVA</p>	<p>Harmonic % = Measured Value (A) x 23/rating per phase (kVA)</p>			
<p>Average harmonic current results – Phase 1</p>						
<p>Harmonic</p>	<p>At 45-55% of Registered Capacity</p>		<p>100% of Registered Capacity</p>		<p>Limit in BS EN 61000-3-12</p>	
	<p>Measured Value MV in Amps</p>	<p>%</p>	<p>Measured Value MV in Amps</p>	<p>%</p>	<p>1 phase</p>	<p>3 phase</p>

2	0.641	2.599	0.507	2.058	8%	8%
3	0.040	0.160	0.130	0.528	21.6%	Not stated
4	0.532	2.158	0.465	1.887	4%	4%
5	0.707	2.867	0.725	2.942	10.7%	10.7%
6	0.015	0.061	0.019	0.078	2.67%	2.67%
7	0.391	1.587	0.335	1.358	7.2%	7.2%
8	0.172	0.699	0.202	0.821	2%	2%
9	0.058	0.237	0.046	0.187	3.8%	Not stated
10	0.038	0.153	0.035	0.140	1.6%	1.6%
11	0.183	0.742	0.215	0.874	3.1%	3.1%
12	0.023	0.095	0.011	0.045	1.33%	1.33%
13	0.147	0.597	0.118	0.478	2%	2%
THD	-	3.822	-	3.193	23%	13%
PWHD	-	4.138	-	3.419	23%	22%

Average harmonic current results – Phase 2						
Harmonic	At 45-55% of Registered Capacity		100% of Registered Capacity		Limit in BS EN 61000-3-12	
	Measured Value MV in Amps	%	Measured Value MV in Amps	%	1 phase	3 phase
2	0.553	2.242	0.617	2.505	8%	8%
3	0.151	0.612	0.039	0.156	21.6%	Not stated
4	0.528	2.141	0.484	1.962	4%	4%
5	0.659	2.673	0.693	2.809	10.7%	10.7%
6	0.035	0.143	0.014	0.056	2.67%	2.67%
7	3.772	1.527	0.372	1.510	7.2%	7.2%
8	0.231	0.938	0.167	0.678	2%	2%

9	0.032	0.129	0.055	0.225	3.8%	Not stated
10	0.033	0.132	0.036	0.145	1.6%	1.6%
11	0.211	0.857	0.171	0.693	3.1%	3.1%
12	0.013	0.054	0.021	0.087	1.33%	1.33%
13	0.127	0.516	0.141	0.571	2%	2%
THD	-	3.689	-	2.904	23%	13%
PWHD	-	3.842	-	3.251	23%	22%

Average harmonic current results – Phase 3						
Harmonic	At 45-55% of Registered Capacity		100% of Registered Capacity		Limit in BS EN 61000-3-12	
	Measured Value MV in Amps	%	Measured Value MV in Amps	%	1 phase	3 phase
2	0.540	2.189	0.553	0.948	8%	8%
3	0.135	0.549	0.573	2.324	21.6%	Not stated
4	0.511	2.075	0.145	0.587	4%	4%
5	0.740	3.000	0.480	1.945	10.7%	10.7%
6	0.020	0.082	0.646	2.619	2.67%	2.67%
7	0.351	1.426	0.033	0.134	7.2%	7.2%
8	0.208	0.846	0.359	1.455	2%	2%
9	0.049	0.200	0.224	0.908	3.8%	Not stated
10	0.037	0.149	0.030	0.121	1.6%	1.6%
11	0.231	0.935	0.031	0.124	3.1%	3.1%
12	0.012	0.049	0.197	0.800	1.33%	1.33%
13	0.123	0.499	0.012	0.049	2%	2%
THD ¹	-	3.976	-	2.969	23%	13%

¹ THD = Total Harmonic Distortion

PWHD ²	-	4.244	-	3.335	23%	22%
Power Generating Module rating per phase (rpp)			6.67	kVA	Harmonic % = Measured Value (A) x 23/rating per phase (kVA)	
Average harmonic current results – Phase 1						
Harmonic	At 45-55% of Registered Capacity		100% of Registered Capacity		Limit in BS EN 61000-3-12	
	Measured Value MV in Amps	%	Measured Value MV in Amps	%	1 phase	3 phase
2	0.524	1.807	0.543	1.873	8%	8%
3	0.145	0.500	0.139	0.481	21.6%	Not stated
4	0.513	1.769	0.466	1.608	4%	4%
5	0.646	2.228	0.633	2.184	10.7%	10.7%
6	0.033	0.114	0.031	0.105	2.67%	2.67%
7	0.361	1.245	0.344	1.186	7.2%	7.2%
8	0.224	0.772	0.217	0.750	2%	2%
9	0.031	0.107	0.029	0.101	3.8%	Not stated
10	0.032	0.110	0.030	0.103	1.6%	1.6%
11	0.209	0.721	0.195	0.672	3.1%	3.1%
12	0.013	0.045	0.012	0.041	1.33%	1.33%
13	0.122	0.421	0.117	0.403	2%	2%
THD	-	3.553	-	2.893	23%	13%
PWHD	-	3.828	-	3.068	23%	22%

Average harmonic current results – Phase 2						
Harmonic	At 45-55% of Registered Capacity		100% of Registered Capacity		Limit in BS EN 61000-3-12	
	Measured Value MV in	%	Measured Value MV in	%	1 phase	3 phase

² PWHD = Partial Weighted Harmonic Distortion

	Amps		Amps			
2	0.505	1.314	0.481	1.658	8%	8%
3	0.129	0.335	0.125	0.431	21.6%	Not stated
4	0.546	1.422	0.452	1.558	4%	4%
5	0.861	2.240	0.711	2.451	10.7%	10.7%
6	0.013	0.033	0.018	0.061	2.67%	2.67%
7	0.630	1.639	0.321	1.107	7.2%	7.2%
8	0.215	0.558	0.196	0.676	2%	2%
9	0.051	0.134	0.045	0.157	3.8%	Not stated
10	0.038	0.099	0.034	0.116	1.6%	1.6%
11	0.280	0.728	0.213	0.733	3.1%	3.1%
12	0.024	0.063	0.011	0.038	1.33%	1.33%
13	0.148	0.386	0.113	0.390	2%	2%
THD	-	3.691	-	2.704	23%	13%
PWHD	-	4.001	-	3.047	23%	22%

Average harmonic current results – Phase 3						
Harmonic	At 45-55% of Registered Capacity		100% of Registered Capacity		Limit in BS EN 61000-3-12	
	Measured Value MV in Amps	%	Measured Value MV in Amps	%	1 phase	3 phase
2	0.694	1.816	0.644	2.221	8%	8%
3	0.116	0.304	0.037	0.126	21.6%	Not stated
4	0.599	1.567	0.470	1.621	4%	4%
5	0.965	2.526	0.679	2.343	10.7%	10.7%
6	0.016	0.042	0.013	0.045	2.67%	2.67%
7	0.560	1.465	0.357	1.232	7.2%	7.2%
8	0.232	0.606	0.162	0.559	2%	2%

9	0.056	0.146	0.054	0.186	3.8%	Not stated
10	0.056	0.146	0.035	0.119	1.6%	1.6%
11	0.260	0.680	0.169	0.582	3.1%	3.1%
12	0.018	0.048	0.021	0.073	1.33%	1.33%
13	0.169	0.443	0.135	0.466	2%	2%
THD ³	-	3.775	-	2.669	23%	13%
PWHD ⁴	-	4.096	-	3.005	23%	22%
Power Generating Module rating per phase (rpp)			8.33	kVA	Harmonic % = Measured Value (A) x 23/rating per phase (kVA)	
Average harmonic current results – Phase 1						
Harmonic	At 45-55% of Registered Capacity		100% of Registered Capacity		Limit in BS EN 61000-3-12	
	Measured Value MV in Amps	%	Measured Value MV in Amps	%	1 phase	3 phase
2	0.698	1.934	0.550	1.525	8%	8%
3	0.018	0.050	0.134	0.372	21.6%	Not stated
4	0.469	1.300	0.601	1.664	4%	4%
5	0.637	1.765	0.878	2.434	10.7%	10.7%
6	0.012	0.033	0.014	0.039	2.67%	2.67%
7	0.381	1.056	0.662	1.833	7.2%	7.2%
8	0.205	0.568	0.221	0.614	2%	2%
9	0.031	0.086	0.054	0.149	3.8%	Not stated
10	0.051	0.141	0.041	0.112	1.6%	1.6%
11	0.204	0.565	0.300	0.832	3.1%	3.1%
12	0.022	0.061	0.026	0.072	1.33%	1.33%
13	0.127	0.352	0.154	0.428	2%	2%

³ THD = Total Harmonic Distortion

⁴ PWHD = Partial Weighted Harmonic Distortion

THD	-	3.327	-	2.348	23%	13%
PWHD	-	3.624	-	2.514	23%	22%

Average harmonic current results – Phase 2						
Harmonic	At 45-55% of Registered Capacity		100% of Registered Capacity		Limit in BS EN 61000-3-12	
	Measured Value MV in Amps	%	Measured Value MV in Amps	%	1 phase	3 phase
2	0.532	1.474	0.756	2.096	8%	8%
3	0.184	0.510	0.121	0.334	21.6%	Not stated
4	0.486	1.347	0.659	1.826	4%	4%
5	0.662	1.834	0.984	2.728	10.7%	10.7%
6	0.027	0.075	0.017	0.048	2.67%	2.67%
7	0.347	0.962	0.588	1.629	7.2%	7.2%
8	0.198	0.549	0.239	0.662	2%	2%
9	0.03	0.083	0.059	0.164	3.8%	Not stated
10	0.028	0.078	0.060	0.166	1.6%	1.6%
11	0.209	0.579	0.279	0.772	3.1%	3.1%
12	0.025	0.069	0.020	0.054	1.33%	1.33%
13	0.113	0.313	0.176	0.488	2%	2%
THD	-	3.399	-	2.135	23%	13%
PWHD	-	3.736	-	2.390	23%	22%

Average harmonic current results – Phase 3						
Harmonic	At 45-55% of Registered Capacity		100% of Registered Capacity		Limit in BS EN 61000-3-12	
	Measured Value MV in Amps	%	Measured Value MV in Amps	%	1 phase	3 phase

2	0.699	1.937	0.771	2.135	8%	8%
3	0.18	0.499	0.094	0.259	21.6%	Not stated
4	0.494	1.369	0.620	1.719	4%	4%
5	0.711	1.970	0.914	2.533	10.7%	10.7%
6	0.002	0.006	0.038	0.105	2.67%	2.67%
7	0.362	1.003	0.634	1.757	7.2%	7.2%
8	0.215	0.596	0.221	0.614	2%	2%
9	0.041	0.114	0.009	0.026	3.8%	Not stated
10	0.032	0.089	0.073	0.201	1.6%	1.6%
11	0.23	0.637	0.274	0.760	3.1%	3.1%
12	0.006	0.017	0.033	0.090	1.33%	1.33%
13	0.128	0.355	0.202	0.561	2%	2%
THD ⁵	-	3.475	-	2.183	23%	13%
PWHD ⁶	-	3.832	-	2.452	23%	22%
Power Generating Module rating per phase (rpp)			10	kVA	Harmonic % = Measured Value (A) x 23/rating per phase (kVA)	
Average harmonic current results – Phase 1						
Harmonic	At 45-55% of Registered Capacity		100% of Registered Capacity		Limit in BS EN 61000-3-12	
	Measured Value MV in Amps	%	Measured Value MV in Amps	%	1 phase	3 phase
2	0.774	1.780	0.725	1.668	8%	8%
3	0.13	0.299	0.111	0.255	21.6%	Not stated
4	0.626	1.440	0.651	1.497	4%	4%
5	0.829	1.907	0.83	1.909	10.7%	10.7%
6	0.052	0.120	0.005	0.012	2.67%	2.67%

⁵ THD = Total Harmonic Distortion

⁶ PWHD = Partial Weighted Harmonic Distortion

7	0.67	1.541	0.618	1.421	7.2%	7.2%
8	0.181	0.416	0.216	0.497	2%	2%
9	0.016	0.037	0.005	0.012	3.8%	Not stated
10	0.048	0.110	0.068	0.156	1.6%	1.6%
11	0.262	0.603	0.246	0.566	3.1%	3.1%
12	0.016	0.037	0.01	0.023	1.33%	1.33%
13	0.187	0.430	0.172	0.396	2%	2%
THD	-	3.389	-	2.129	23%	13%
PWHD	-	3.562	-	2.279	23%	22%

Average harmonic current results – Phase 2						
Harmonic	At 45-55% of Registered Capacity		100% of Registered Capacity		Limit in BS EN 61000-3-12	
	Measured Value MV in Amps	%	Measured Value MV in Amps	%	1 phase	3 phase
2	0.702	1.615	0.792	1.822	8%	8%
3	0.123	0.283	0.148	0.340	21.6%	Not stated
4	0.632	1.454	0.607	1.396	4%	4%
5	0.859	1.976	0.833	1.916	10.7%	10.7%
6	0.032	0.074	0.023	0.053	2.67%	2.67%
7	0.595	1.369	0.612	1.408	7.2%	7.2%
8	0.217	0.499	0.22	0.506	2%	2%
9	0.038	0.087	0.036	0.083	3.8%	Not stated
10	0.033	0.076	0.027	0.062	1.6%	1.6%
11	0.256	0.589	0.275	0.633	3.1%	3.1%
12	0.014	0.032	0.007	0.016	1.33%	1.33%
13	0.145	0.334	0.152	0.350	2%	2%

THD	-	3.082	-	1.936	23%	13%
PWHD	-	3.387	-	2.167	23%	22%

Average harmonic current results – Phase 3						
Harmonic	At 45-55% of Registered Capacity		100% of Registered Capacity		Limit in BS EN 61000-3-12	
	Measured Value MV in Amps	%	Measured Value MV in Amps	%	1 phase	3 phase
2	0.645	1.484	0.625	1.438	8%	8%
3	0.104	0.239	0.105	0.242	21.6%	Not stated
4	0.644	1.481	0.643	1.479	4%	4%
5	0.965	2.220	0.947	2.178	10.7%	10.7%
6	0.013	0.030	0.039	0.090	2.67%	2.67%
7	0.58	1.334	0.574	1.320	7.2%	7.2%
8	0.216	0.497	0.229	0.527	2%	2%
9	0.058	0.133	0.034	0.078	3.8%	Not stated
10	0.055	0.127	0.05	0.115	1.6%	1.6%
11	0.248	0.570	0.245	0.564	3.1%	3.1%
12	0.01	0.023	0.016	0.037	1.33%	1.33%
13	0.155	0.357	0.167	0.384	2%	2%
THD ⁷	-	3.087	-	1.979	23%	13%
PWHD ⁸	-	3.430	-	2.223	23%	22%
Power Generating Module rating per phase (rpp)			11	kVA	Harmonic % = Measured Value (A) x 23/rating per phase (kVA)	
Average harmonic current results – Phase 1						
Harmonic	At 45-55% of Registered Capacity		100% of Registered Capacity		Limit in BS EN 61000-3-12	

⁷ THD = Total Harmonic Distortion

⁸ PWHD = Partial Weighted Harmonic Distortion

	Capacity		Capacity		1 phase	3 phase
	Measured Value MV in Amps	%	Measured Value MV in Amps	%		
2	0.678	1.418	0.711	1.487	8%	8%
3	0.023	0.048	0.110	0.229	21.6%	Not stated
4	0.455	0.951	0.639	1.335	4%	4%
5	0.621	1.298	0.815	1.704	10.7%	10.7%
6	0.035	0.073	0.005	0.010	2.67%	2.67%
7	0.353	0.738	0.611	1.278	7.2%	7.2%
8	0.177	0.370	0.213	0.446	2%	2%
9	0.061	0.128	0.005	0.010	3.8%	Not stated
10	0.048	0.101	0.067	0.139	1.6%	1.6%
11	0.211	0.441	0.242	0.507	3.1%	3.1%
12	0.043	0.090	0.010	0.021	1.33%	1.33%
13	0.157	0.328	0.168	0.351	2%	2%
THD	-	3.256	-	2.087	23%	13%
PWHD	-	3.449	-	2.235	23%	22%

Average harmonic current results – Phase 2						
Harmonic	At 45-55% of Registered Capacity		100% of Registered Capacity		Limit in BS EN 61000-3-12	
	Measured Value MV in Amps	%	Measured Value MV in Amps	%	1 phase	3 phase
2	0.532	1.112	0.748	1.563	8%	8%
3	0.184	0.385	0.141	0.294	21.6%	Not stated
4	0.446	0.933	0.583	1.218	4%	4%
5	0.662	1.384	0.790	1.651	10.7%	10.7%
6	0.034	0.071	0.022	0.046	2.67%	2.67%

7	0.358	0.749	0.581	1.214	7.2%	7.2%
8	0.232	0.485	0.207	0.434	2%	2%
9	0.056	0.117	0.035	0.072	3.8%	Not stated
10	0.066	0.138	0.026	0.054	1.6%	1.6%
11	0.189	0.395	0.259	0.541	3.1%	3.1%
12	0.017	0.036	0.007	0.014	1.33%	1.33%
13	0.106	0.222	0.147	0.308	2%	2%
THD	-	3.075	-	1.898	23%	13%
PWHD	-	3.432	-	2.125	23%	22%

Average harmonic current results – Phase 3						
Harmonic	At 45-55% of Registered Capacity		100% of Registered Capacity		Limit in BS EN 61000-3-12	
	Measured Value MV in Amps	%	Measured Value MV in Amps	%	1 phase	3 phase
2	0.724	1.514	0.601	1.257	8%	8%
3	0.169	0.353	0.100	0.210	21.6%	Not stated
4	0.494	1.033	0.631	1.320	4%	4%
5	0.711	1.487	0.913	1.909	10.7%	10.7%
6	0.062	0.130	0.038	0.079	2.67%	2.67%
7	0.332	0.694	0.546	1.143	7.2%	7.2%
8	0.219	0.458	0.216	0.452	2%	2%
9	0.031	0.065	0.033	0.069	3.8%	Not stated
10	0.082	0.171	0.048	0.101	1.6%	1.6%
11	0.256	0.535	0.238	0.498	3.1%	3.1%
12	0.012	0.025	0.016	0.033	1.33%	1.33%
13	0.099	0.207	0.164	0.342	2%	2%

THD ⁹	-	3.144	-	1.941	23%	13%
PWHD ¹⁰	-	3.521	-	2.180	23%	22%
Power Generating Module rating per phase (rpp)		13.33	kVA		Harmonic % = Measured Value (A) x 23/rating per phase (kVA)	
Average harmonic current results – Phase 1						
Harmonic	At 45-55% of Registered Capacity		100% of Registered Capacity		Limit in BS EN 61000-3-12	
	Measured Value MV in Amps	%	Measured Value MV in Amps	%	1 phase	3 phase
2	0.707	1.820	0.716	1.218	8%	8%
3	0.090	0.232	0.179	0.304	21.6%	Not stated
4	0.564	1.452	0.836	1.422	4%	4%
5	0.896	2.308	0.993	1.689	10.7%	10.7%
6	0.035	0.090	0.029	0.050	2.67%	2.67%
7	0.604	1.555	0.904	1.538	7.2%	7.2%
8	0.215	0.554	0.267	0.455	2%	2%
9	0.009	0.023	0.095	0.161	3.8%	Not stated
10	0.068	0.175	0.087	0.148	1.6%	1.6%
11	0.256	0.660	0.368	0.625	3.1%	3.1%
12	0.030	0.076	0.029	0.049	1.33%	1.33%
13	0.194	0.499	0.092	0.157	2%	2%
THD	-	2.858	-	1.764	23%	13%
PWHD	-	3.051	-	1.889	23%	22%

Average harmonic current results – Phase 2			
Harmonic	At 45-55% of Registered	100% of Registered	Limit in BS EN 61000-3-12

⁹ THD = Total Harmonic Distortion

¹⁰ PWHD = Partial Weighted Harmonic Distortion

	Capacity		Capacity		1 phase	3 phase
	Measured Value MV in Amps	%	Measured Value MV in Amps	%		
2	0.505	1.314	0.603	1.028	8%	8%
3	0.129	0.335	0.197	0.336	21.6%	Not stated
4	0.546	1.422	0.785	1.340	4%	4%
5	0.861	2.240	0.836	1.425	10.7%	10.7%
6	0.013	0.033	0.017	0.028	2.67%	2.67%
7	0.630	1.639	0.984	1.679	7.2%	7.2%
8	0.215	0.558	0.210	0.359	2%	2%
9	0.051	0.134	0.088	0.150	3.8%	Not stated
10	0.038	0.099	0.094	0.161	1.6%	1.6%
11	0.280	0.728	0.292	0.498	3.1%	3.1%
12	0.024	0.063	0.012	0.020	1.33%	1.33%
13	0.148	0.386	0.012	0.191	2%	2%
THD	-	2.657	-	1.640	23%	13%
PWHD	-	2.976	-	1.843	23%	22%

Average harmonic current results – Phase 3						
Harmonic	At 45-55% of Registered Capacity		100% of Registered Capacity		Limit in BS EN 61000-3-12	
	Measured Value MV in Amps	%	Measured Value MV in Amps	%	1 phase	3 phase
2	0.694	1.816	0.553	0.948	8%	8%
3	0.116	0.304	0.073	0.126	21.6%	Not stated
4	0.599	1.567	0.771	1.323	4%	4%
5	0.965	2.526	1.030	1.768	10.7%	10.7%
6	0.016	0.042	0.015	0.027	2.67%	2.67%

7	0.560	1.465	0.910	1.562	7.2%	7.2%
8	0.232	0.606	0.224	0.385	2%	2%
9	0.056	0.146	0.041	0.071	3.8%	Not stated
10	0.056	0.146	0.090	0.155	1.6%	1.6%
11	0.260	0.680	0.262	0.450	3.1%	3.1%
12	0.018	0.048	0.003	0.005	1.33%	1.33%
13	0.169	0.443	0.133	0.228	2%	2%
THD ¹¹	-	2.598	-	1.604	23%	13%
PWHD ¹²	-	2.901	-	1.796	23%	22%
Power Generating Module rating per phase (rpp)			16.67	kVA	Harmonic % = Measured Value (A) x 23/rating per phase (kVA)	
Average harmonic current results – Phase 1						
Harmonic	At 45-55% of Registered Capacity		100% of Registered Capacity		Limit in BS EN 61000-3-12	
	Measured Value MV in Amps	%	Measured Value MV in Amps	%	1 phase	3 phase
2	0.694	0.957	0.705	0.974	8%	8%
3	0.089	0.123	0.177	0.244	21.6%	Not stated
4	0.553	0.764	0.824	1.138	4%	4%
5	0.880	1.214	0.978	1.350	10.7%	10.7%
6	0.035	0.048	0.029	0.040	2.67%	2.67%
7	0.597	0.824	0.891	1.230	7.2%	7.2%
8	0.212	0.293	0.263	0.363	2%	2%
9	0.009	0.012	0.094	0.130	3.8%	Not stated
10	0.067	0.092	0.086	0.119	1.6%	1.6%
11	0.252	0.348	0.363	0.500	3.1%	3.1%

¹¹ THD = Total Harmonic Distortion

¹² PWHD = Partial Weighted Harmonic Distortion

12	0.030	0.041	0.029	0.040	1.33%	1.33%
13	0.191	0.264	0.091	0.125	2%	2%
THD	-	2.394	-	1.496	23%	13%
PWHD	-	2.563	-	1.602	23%	22%

Average harmonic current results – Phase 2						
Harmonic	At 45-55% of Registered Capacity		100% of Registered Capacity		Limit in BS EN 61000-3-12	
	Measured Value MV in Amps	%	Measured Value MV in Amps	%	1 phase	3 phase
2	0.477	0.658	0.568	0.784	8%	8%
3	0.123	0.169	0.186	0.256	21.6%	Not stated
4	0.524	0.723	0.739	1.020	4%	4%
5	0.816	1.126	0.787	1.086	10.7%	10.7%
6	0.012	0.017	0.017	0.023	2.67%	2.67%
7	0.598	0.825	0.926	1.278	7.2%	7.2%
8	0.203	0.280	0.200	0.275	2%	2%
9	0.049	0.068	0.084	0.115	3.8%	Not stated
10	0.036	0.050	0.089	0.123	1.6%	1.6%
11	0.263	0.364	0.280	0.386	3.1%	3.1%
12	0.023	0.032	0.012	0.016	1.33%	1.33%
13	0.143	0.198	0.106	0.146	2%	2%
THD	-	2.178	-	1.361	23%	13%
PWHD	-	2.437	-	1.523	23%	22%

Average harmonic current results – Phase 3			
Harmonic	At 45-55% of Registered Capacity	100% of Registered Capacity	Limit in BS EN 61000-3-12

	Measured Value MV in Amps	%	Measured Value MV in Amps	%	1 phase	3 phase
2	0.668	0.921	0.532	0.734	8%	8%
3	0.111	0.153	0.071	0.098	21.6%	Not stated
4	0.588	0.812	0.743	1.025	4%	4%
5	0.930	1.284	0.992	1.369	10.7%	10.7%
6	0.016	0.021	0.015	0.021	2.67%	2.67%
7	0.533	0.736	0.876	1.209	7.2%	7.2%
8	0.219	0.303	0.216	0.298	2%	2%
9	0.055	0.076	0.040	0.055	3.8%	Not stated
10	0.054	0.074	0.090	0.124	1.6%	1.6%
11	0.253	0.349	0.252	0.348	3.1%	3.1%
12	0.018	0.024	0.003	0.004	1.33%	1.33%
13	0.163	0.224	0.129	0.177	2%	2%
THD ¹³	-	2.226	-	1.391	23%	13%
PWHD ¹⁴	-	2.501	-	1.563	23%	22%

3. Power Quality – Voltage fluctuations and Flicker:

For **Power Generating Modules of Registered Capacity** of less than 75 A per phase (ie 50 kW) these tests should be undertaken in accordance with Annex A.7.1.4.3. Results should be normalised to a standard source impedance, or if this results in figures above the limits set in BS EN 61000-3-11 to a suitable Maximum Impedance.

For **Power Generating Modules of Registered Capacity** of greater than 75 A per phase (ie 50 kW) the installation must be designed in accordance with EREC P28.

	Starting			Stopping			Running	
	d max	d c	d(t)	d max	d c	d(t)	P st	P It 2 hours
Measured Values at test	3.59	0.46	0	0.09	0.05	0	0.26	0.24

¹³ THD = Total Harmonic Distortion

¹⁴ PWHD = Partial Weighted Harmonic Distortion

impedance								
Normalised to standard impedance	3.59	0.46	0	0.09	0.05	0	0.26	0.24
Normalised to required maximum impedance	-	-	-	-	-	-	-	-
Limits set under BS EN 61000-3-11	4%	3.3%	3.3%	4%	3.3%	3.3%	1.0	0.65
Test Impedance	R	0.24	Ω	XI	0.15			Ω
Standard Impedance	R	0.24 *	Ω	XI	0.15 *			Ω
Maximum Impedance	R	-	Ω	XI	-			Ω
<p>* Applies to three phase and split single phase Power Generating Modules.</p> <p>^ Applies to single phase Power Generating Module and Power Generating Modules using two phases on a three phase system</p> <p>For voltage change and flicker measurements the following formula is to be used to convert the measured values to the normalised values where the Power Factor of the generation output is 0.98 or above.</p> <p>Normalised value = Measured value x reference source resistance/measured source resistance at test point</p> <p>Single phase units reference source resistance is 0.4 Ω</p> <p>Two phase units in a three phase system reference source resistance is 0.4 Ω</p> <p>Two phase units in a split phase system reference source resistance is 0.24 Ω</p> <p>Three phase units reference source resistance is 0.24 Ω</p> <p>Where the Power Factor of the output is under 0.98 then the XI to R ratio of the test impedance should be close to that of the Standard Impedance.</p> <p>The stopping test should be a trip from full load operation.</p> <p>The duration of these tests need to comply with the particular requirements set out in the testing notes for the technology under test. Dates and location of the test need to be noted below</p>								
Test start date	27.JAN.2019				Test end date	28.JAN.2019		
Test location	Growatt R&D Test Lab							
<p>4. Power quality – DC injection: The tests should be carried out on a single Generating Unit. Tests are to be carried out at three defined power levels $\pm 5\%$. At 230 V a 50 kW three phase Inverter has a current output</p>								

of 217 A so DC limit is 543 mA. These tests should be undertaken in accordance with Annex A.7.1.4.4.			
Test power level (17K)	10%	55%	100%
Recorded value in Amps	34.2mA/38.8mA/40mA	36.5mA/39.7mA/41.6mA	39.3mA/42.6mA/44.3mA
as % of rated AC current	0.14%/0.16%/0.16%	0.15%/0.16%/0.17%	0.16%/0.17%/0.18%
Limit	0.25%	0.25%	0.25%
Test power level (20K)	10%	55%	100%
Recorded value in Amps	46.7mA/44.1mA/49.8mA	49.3mA/48.2mA/51.5mA	52mA/50.8mA/54.7mA
as % of rated AC current	0.16%/0.15%/0.17%	0.17%/0.17%/0.18%	0.18%/0.18%/0.19%
Limit	0.25%	0.25%	0.25%
Test power level (25K)	10%	55%	100%
Recorded value in Amps	58.2mA/60.5mA/61.8mA	66.4mA/67.9mA/69.7mA	74.3mA/75.4mA/76.7mA
as % of rated AC current	0.16%/0.17%/0.17%	0.18%/0.18%/0.19%	0.21%/0.21%/0.21%
Limit	0.25%	0.25%	0.25%
Test power level (30K)	10%	55%	100%
Recorded value in Amps	68.9mA/72.5mA/64.6mA	73.9mA/69.5mA/70.7mA	78.3mA/80.9mA/77.7mA
as % of rated AC current	0.16%/0.17%/0.15%	0.17%/0.16%/0.16%	0.18%/0.19%/0.18%
Limit	0.25%	0.25%	0.25%
Test power level (33K)	10%	55%	100%
Recorded value in Amps	75.5mA/71.9mA/69.8mA	82.5mA/79.6mA/78.2mA	90.3mA/89.3mA/86.8mA
as % of rated AC current	0.16%/0.15%/0.15%	0.17%/0.17%/0.16%	0.19%/0.19%/0.18%
Limit	0.25%	0.25%	0.25%
Test power level (40K)	10%	55%	100%
Recorded value in Amps	96.1mA/99.4mA/94.8mA	108.6mA/113.3mA/105.8mA	115.3mA/121.2mA/112.5mA
as % of rated AC current	0.17%/0.17%/0.16%	0.19%/0.20%/0.18%	0.20%/0.21%/0.19%
Limit	0.25%	0.25%	0.25%
Test power level (50K)	10%	55%	100%

Recorded value in Amps	108.7mA/103.9mA/110.8 mA	124.2mA/118.3mA/127.2mA	133.8mA/125.6mA/139.7 mA
as % of rated AC current	0.15%/0.14%/0.15%	0.17%/0.16%/0.18%	0.19%/0.17%/0.19%
Limit	0.25%	0.25%	0.25%

5. Power Factor: The tests should be carried out on a single **Power Generating Module**. Tests are to be carried out at three voltage levels and at **Registered Capacity**. Voltage to be maintained within $\pm 1.5\%$ of the stated level during the test. These tests should be undertaken in accordance with Annex A.7.1.4.2.

Voltage	0.94 pu (260.3 V)	1 pu (277 V)	1.1 pu (304.7 V)
Measured value	0.998/0.997/0.998	0.998/0.998/0.999	0.998/0.998/0.998
Power Factor Limit	>0.95	>0.95	>0.95

6. Protection – Frequency tests: These tests should be carried out in accordance with the Annex A.7.1.2.3.

Function	Setting		Trip test		“No trip tests”	
	Frequency	Time delay	Frequency	Time delay	Frequency /time	Confirm no trip
U/F stage 1	47.5 Hz	20 s	47.51Hz	20.03s	47.7 Hz 25 s	No trip
U/F stage 2	47 Hz	0.5 s	47.01Hz	0.52s	47.2 Hz 19.98 s	No trip
					46.8 Hz 0.48 s	No trip
O/F	52 Hz	0.5 s	52.01Hz	0.57s	51.8 Hz 89.98 s	No trip
					52.2 Hz 0.48 s	No trip

Note. For frequency trip tests the frequency required to trip is the setting ± 0.1 Hz. In order to measure the time delay a larger deviation than the minimum required to operate the projection can be used. The “No trip tests” need to be carried out at the setting ± 0.2 Hz and for the relevant times as shown in the table above to ensure that the protection will not trip in error.

7. Protection – Voltage tests: These tests should be carried out in accordance with Annex A.7.1.2.2.

Function	Setting		Trip test		“No trip tests”	
	Voltage	Time delay	Voltage	Time delay	Voltage /time	Confirm no trip
U/V	0.8 pu (184 V)	2.5 s	184	2.56s	188 V 3.50 s	No trip

					180 V 2.48 s	No trip
O/V stage 1	1.14 pu (262.2V)	1.0 s	263V	1.01s	258.2 V 2.0 s	No trip
O/V stage 2	1.19 pu (273.7V)	0.5 s	274V	0.524s	269.7 V 0.98s	No trip
					277.7 V 0.48 s	No trip

Note for Voltage tests the Voltage required to trip is the setting ± 3.45 V. The time delay can be measured at a larger deviation than the minimum required to operate the protection. The No trip tests need to be carried out at the setting ± 4 V and for the relevant times as shown in the table above to ensure that the protection will not trip in error.

8. Protection – Loss of Mains test: These tests should be carried out in accordance with BS EN 62116. Annex A.7.1.2.4.

The following sub set of tests should be recorded in the following table.

Test Power and imbalance	33% -5% Q Test 22	66% -5% Q Test 12	100% -5% P Test 5	33% +5% Q Test 31	66% +5% Q Test 21	100% +5% P Test 10
Trip time. Limit is 0.5s	0.370s	0.385s	0.402s	0.355s	0.362s	0.390s

Loss of Mains Protection, Vector Shift Stability test. This test should be carried out in accordance with Annex A.7.1.2.6.				
	Start Frequency	Change	Confirm no trip	
Positive Vector Shift	49.5 Hz	+50 degrees	No trip	
Negative Vector Shift	50.5 Hz	- 50 degrees	No trip	
Loss of Mains Protection, RoCoF Stability test: This test should be carried out in accordance with Annex A.7.1.2.6.				
Ramp range	Test frequency ramp:		Test Duration	Confirm no trip
49.0 Hz to 51.0 Hz	+0.95 Hzs ⁻¹		2.1 s	No trip
51.0 Hz to 49.0 Hz	-0.95 Hzs ⁻¹		2.1 s	No trip
9. Limited Frequency Sensitive Mode – Over frequency test: The test should be carried out using the specific threshold frequency of 50.4 Hz and Droop of 10%. This test should be carried out in accordance with Annex A.7.1.3.				
Active Power response to rising frequency/time plots are attached if frequency injection tests are undertaken in accordance with Annex A.7.2.4.				Y/N
Alternatively, simulation results should be noted below:				
Test sequence at Registered Capacity >80%	Measured Active Power Output	Frequency	Primary Power Source	Active Power Gradient
Step a) 50.00Hz ±0.01Hz	49975.1W	50.003Hz	50371.8W	-
Step b) 50.45Hz ±0.05Hz	49512.5W	50.451Hz		-
Step c) 50.70Hz ±0.10Hz	46990.3W	50.695Hz		-
Step d) 51.15Hz ±0.05Hz	42500.9W	51.152Hz		-
Step e) 50.70Hz ±0.10Hz	46991.1W	50.701Hz		-
Step f) 50.45Hz ±0.05Hz	49496.4W	50.451Hz		-

Step g) 50.00Hz ±0.01Hz	49977.9W	49.996Hz		
Test sequence at Registered Capacity 40% - 60%	Measured Active Power Output	Frequency	Primary Power Source	Active Power Gradient
Step a) 50.00Hz ±0.01Hz	24947.7W	50.003Hz	25447.3W	-
Step b) 50.45Hz ±0.05Hz	24752.9W	50.451Hz		-
Step c) 50.70Hz ±0.10Hz	23525.9W	50.703Hz		-
Step d) 51.15Hz ±0.05Hz	21258.5W	51.151Hz		-
Step e) 50.70Hz ±0.10Hz	23523.5W	50.696Hz		-

10. Protection – Re-connection timer.

Test should prove that the reconnection sequence starts after a minimum delay of 20 s for restoration of voltage and frequency to within the stage 1 settings of Table 10.1.

Time delay setting	Measured delay	Checks on no reconnection when voltage or frequency is brought to just outside stage 1 limits of Table 10.1.			
20s	20s	At 1.16 pu (321.3 V)	At 0.85 pu (235.5 V)	At 47.4 Hz	At 52.1 Hz
Confirmation that the Power Generating Module does not re-connect.		Yes	Yes	Yes	Yes

11. Fault level contribution: These tests shall be carried out in accordance with EREC G99 Annex A.7.1.5.

For **Inverter** output

Time after fault	Volts	Amps
20ms	25.9V	1.02A
100ms	25.7V	0.99A
250ms	25.5V	0.96A
500ms	25.3V	0.94A
Time to trip	0.15s	In seconds

12. Self-Monitoring solid state switching: No specified test requirements. Refer to Annex A.7.1.7.	
It has been verified that in the event of the solid state switching device failing to disconnect the Power Park Module , the voltage on the output side of the switching device is reduced to a value below 50 volts within 0.5 s.	NA
13. Wiring functional tests: If required by para 15.2.1.	
Confirm that the relevant test schedule is attached (tests to be undertaken at time of commissioning)	NA
14. Logic interface (input port).	
Confirm that an input port is provided and can be used to shut down the module.	Yes
Additional comments.	
This equipment is equipped with RJ45 terminal for logic interface that being received the signal from the DNO, the connection should be installed per installation manual, and the signal should be a simple binary output that captured by RJ45 terminal(PIN 5 and 1 for detecting the signal). Once the signal actived, the inverter will reduce its active power to zero within 5s.	