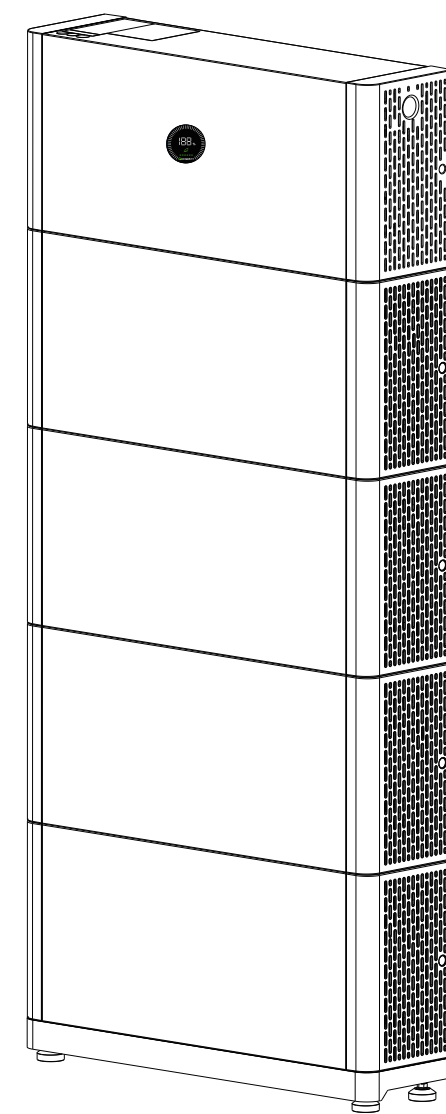
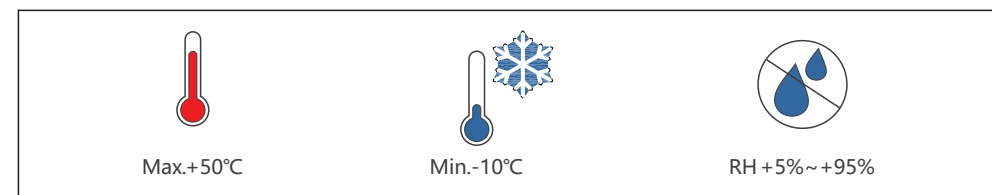


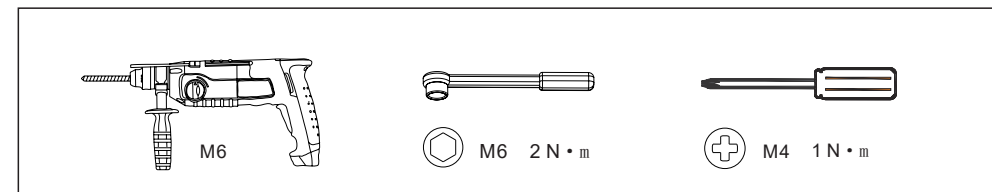
Quick Installation Manual
APX 5.0~30.0P-S1



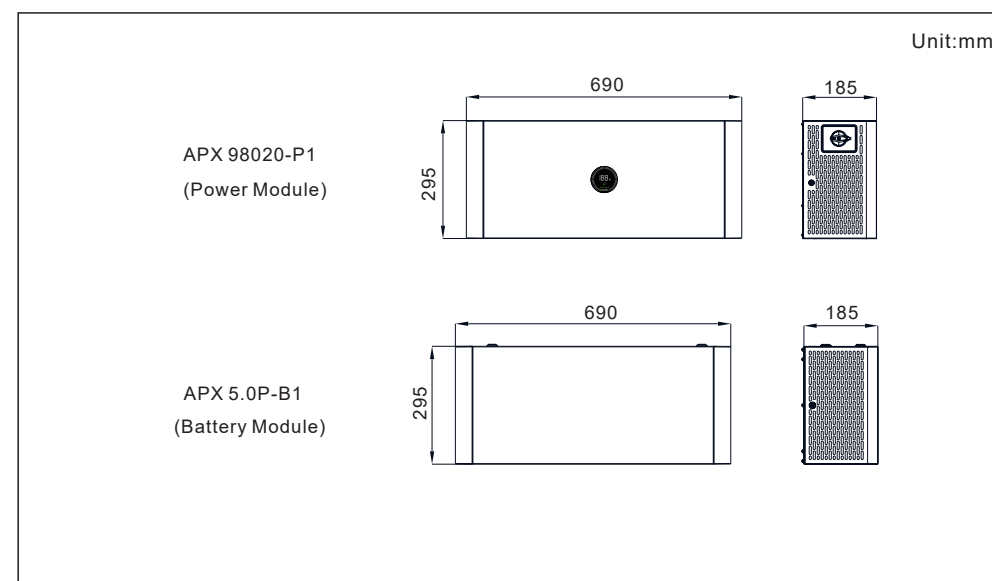
Environment requirements



Installation tools

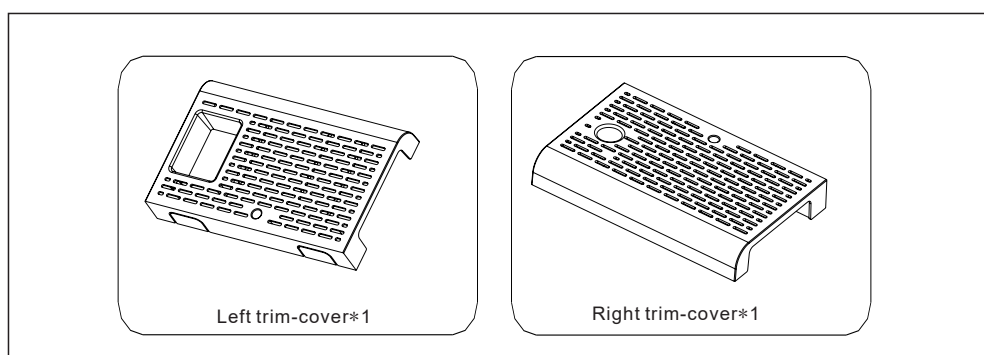
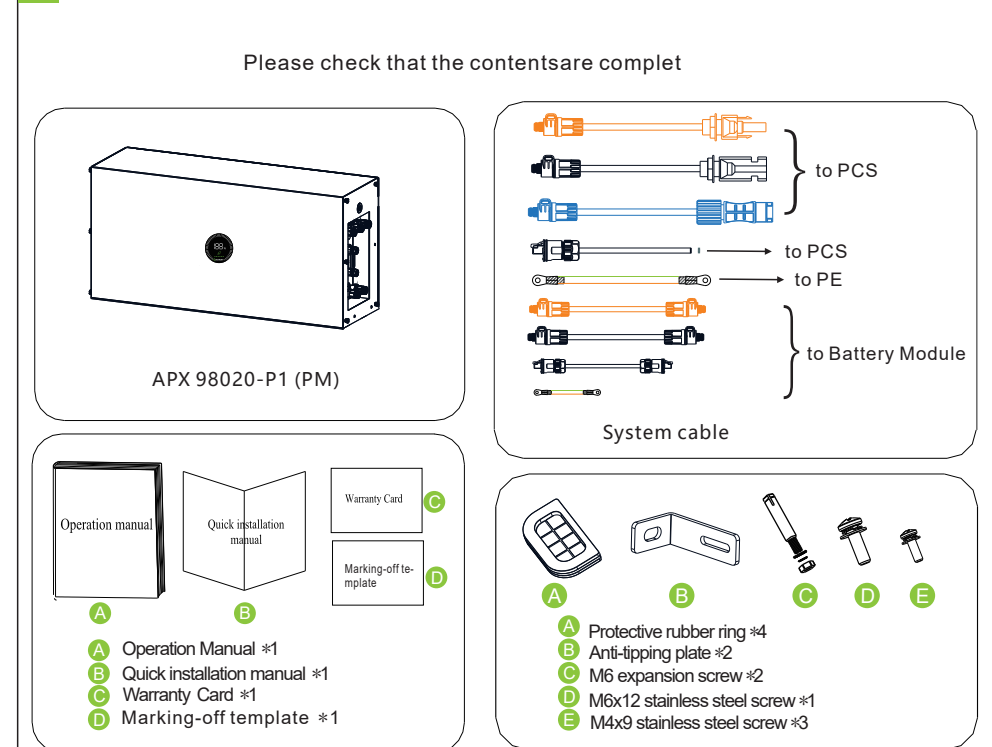


Dimensions

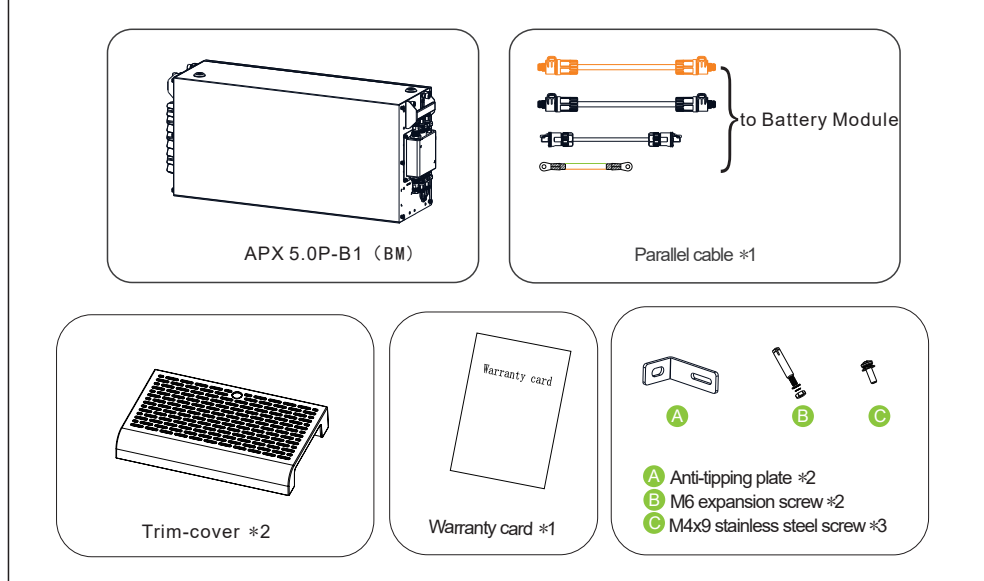


1. Inspection upon delivery

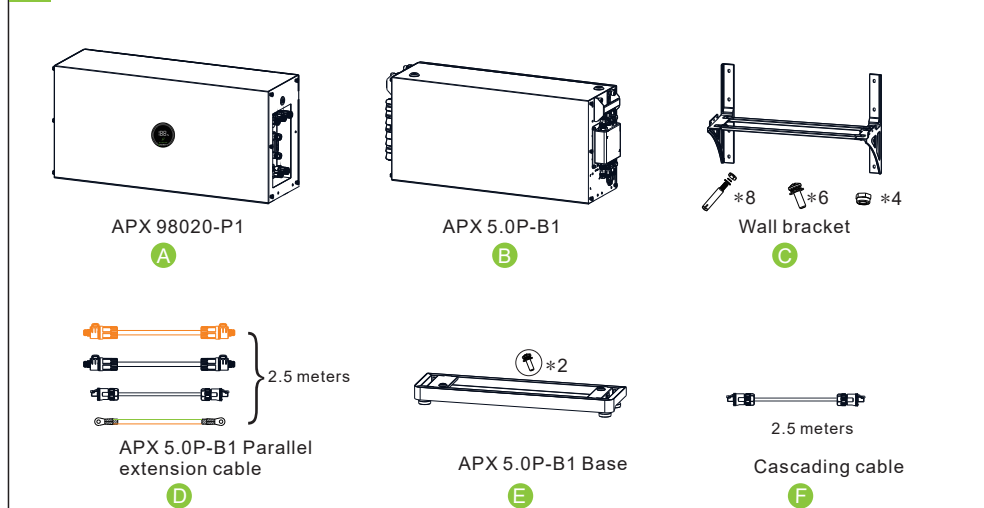
1-1 Checking the APX 98020-P1 packing list



1-2 Checking the APX 5.0P-B1 packing list

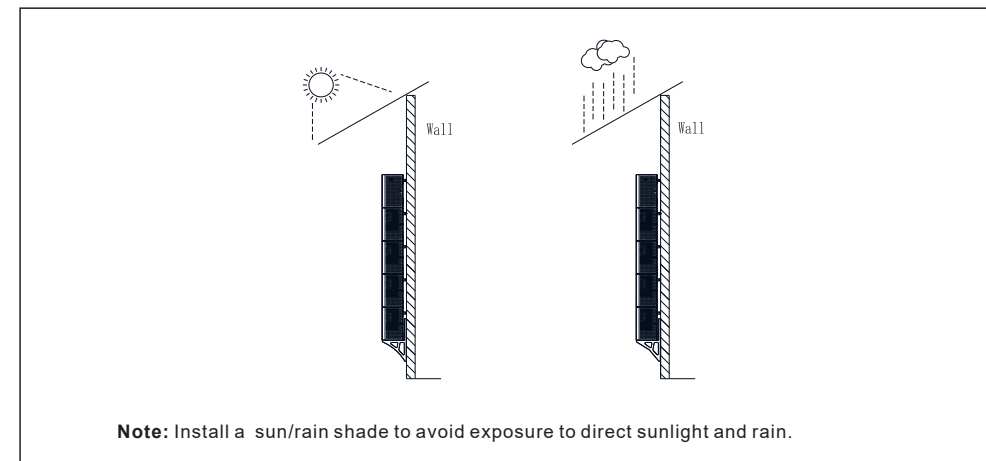


1-3 Check accessories



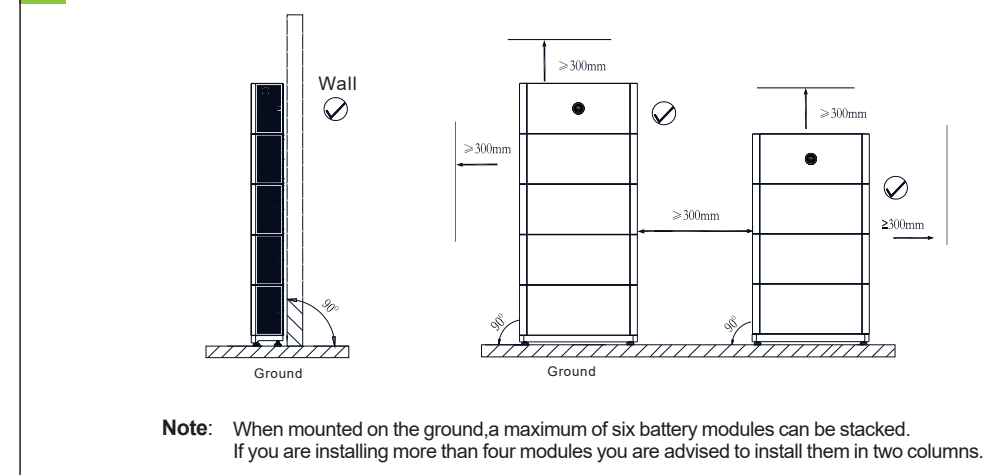
Battery Capacity	Floor-mounted Installation Compound Mode	Wall-Mounted Installation Compound Mode
5kWh	A+B+E	A+B+C
10kWh	A+B*2+E	A+B*2+C
15kWh	A+B*3+E	A+B*3+C
20kWh	A+B*4+E	A+B*4+C
25kWh	A+B*5+E*2+D	A+B*5+C*2+D
30kWh	A+B*6+E*2+D	A+B*6+C*2+D

2. Installation Environment Requirement

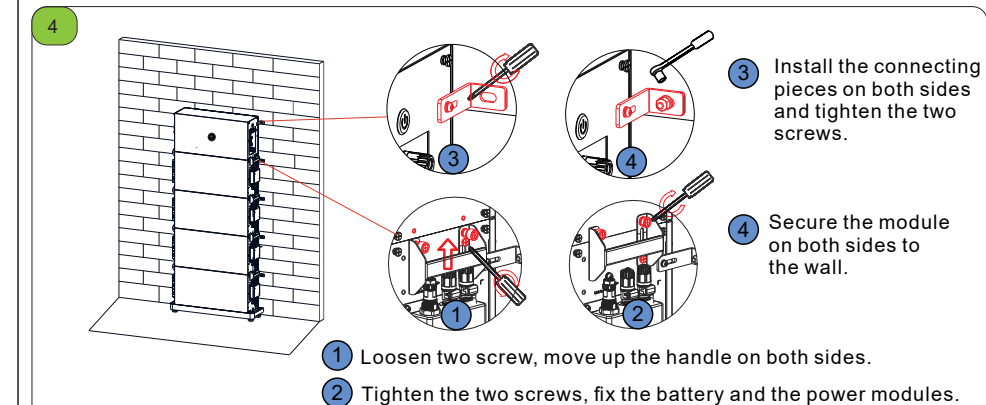
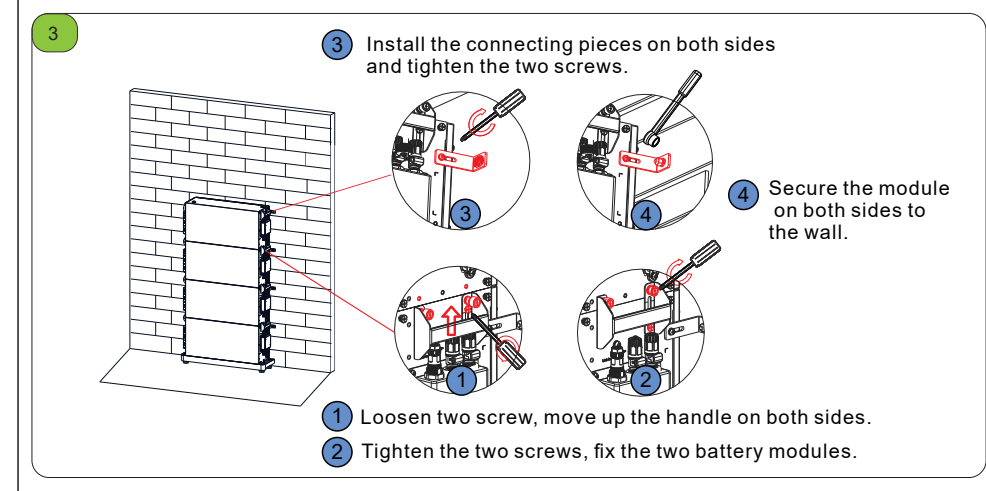
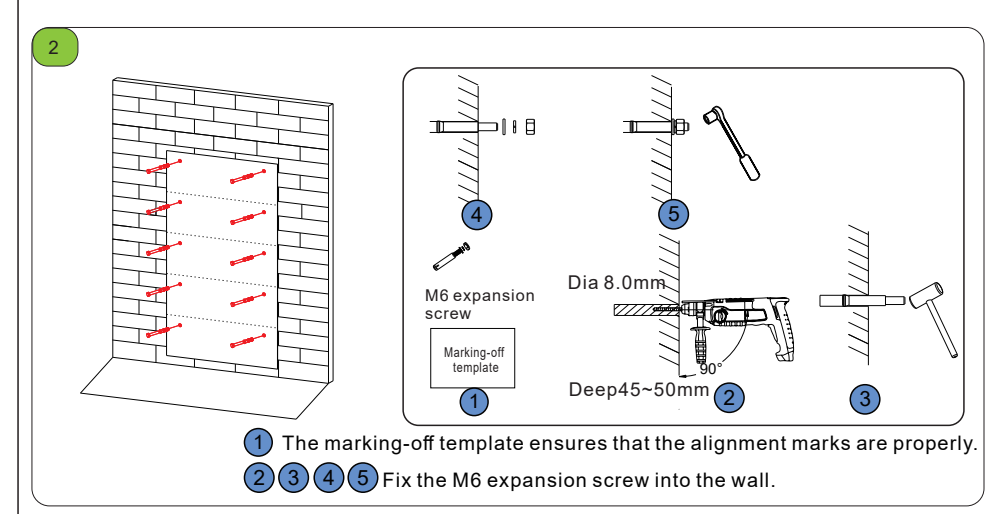
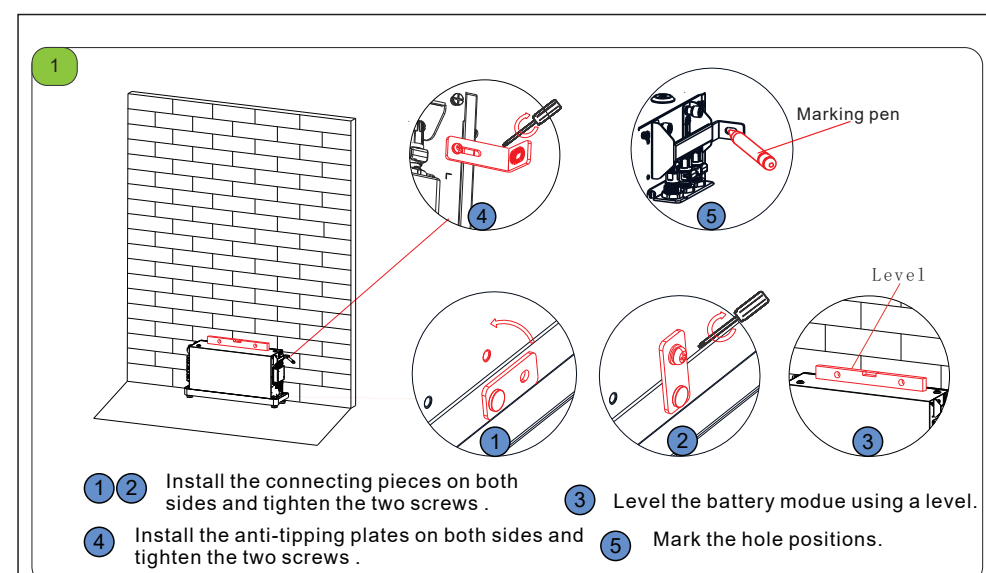
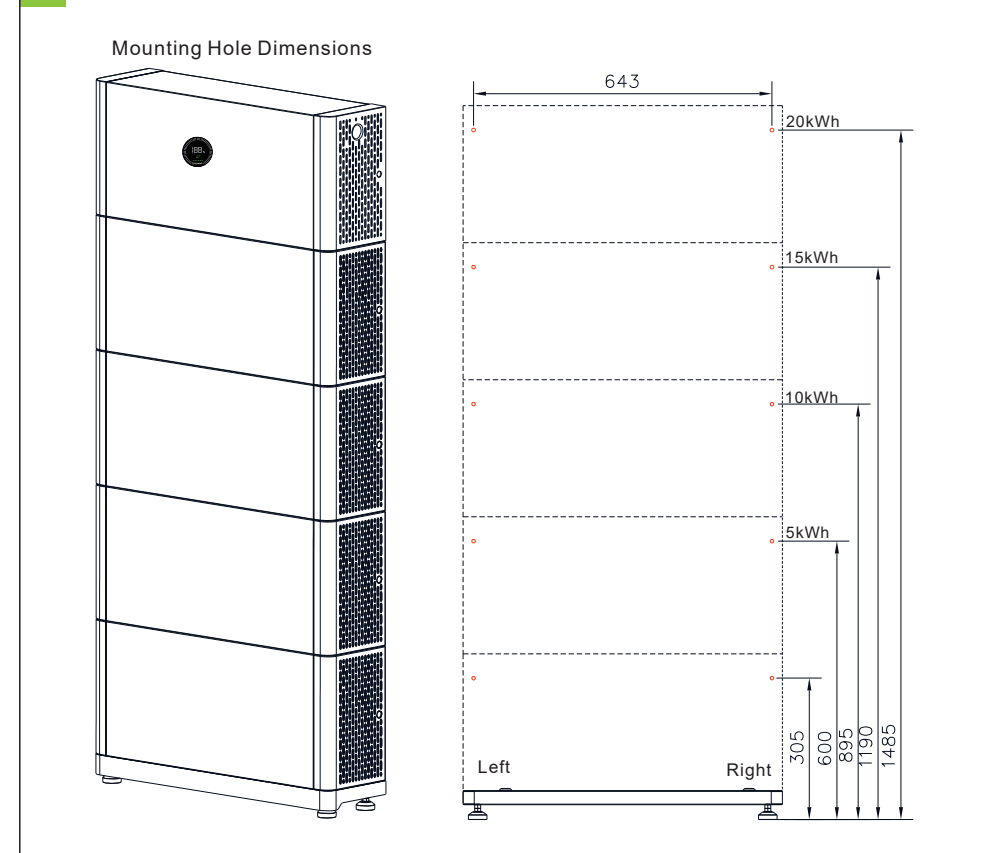


3. Floor-mounted installation

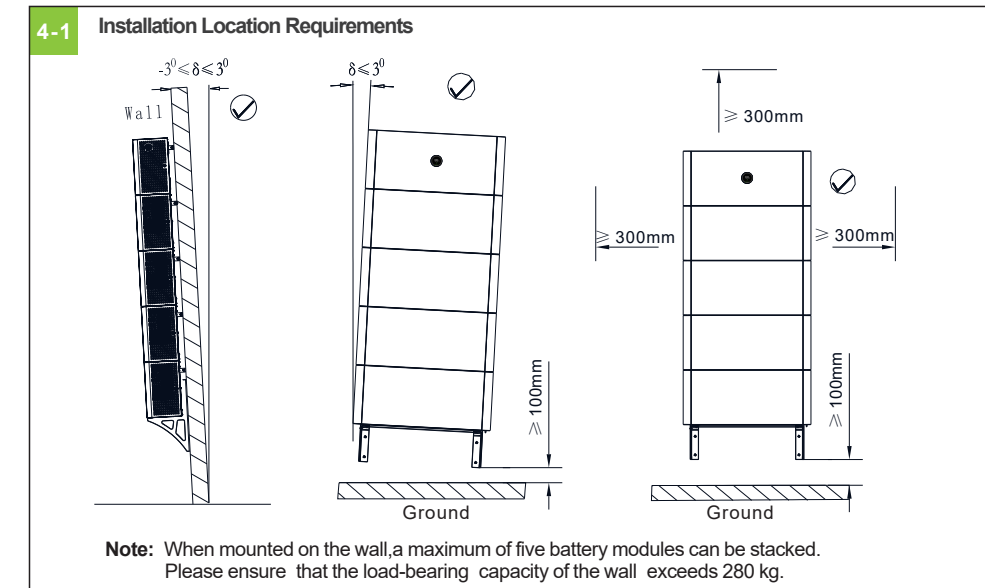
3-1 Installation Location Requirements



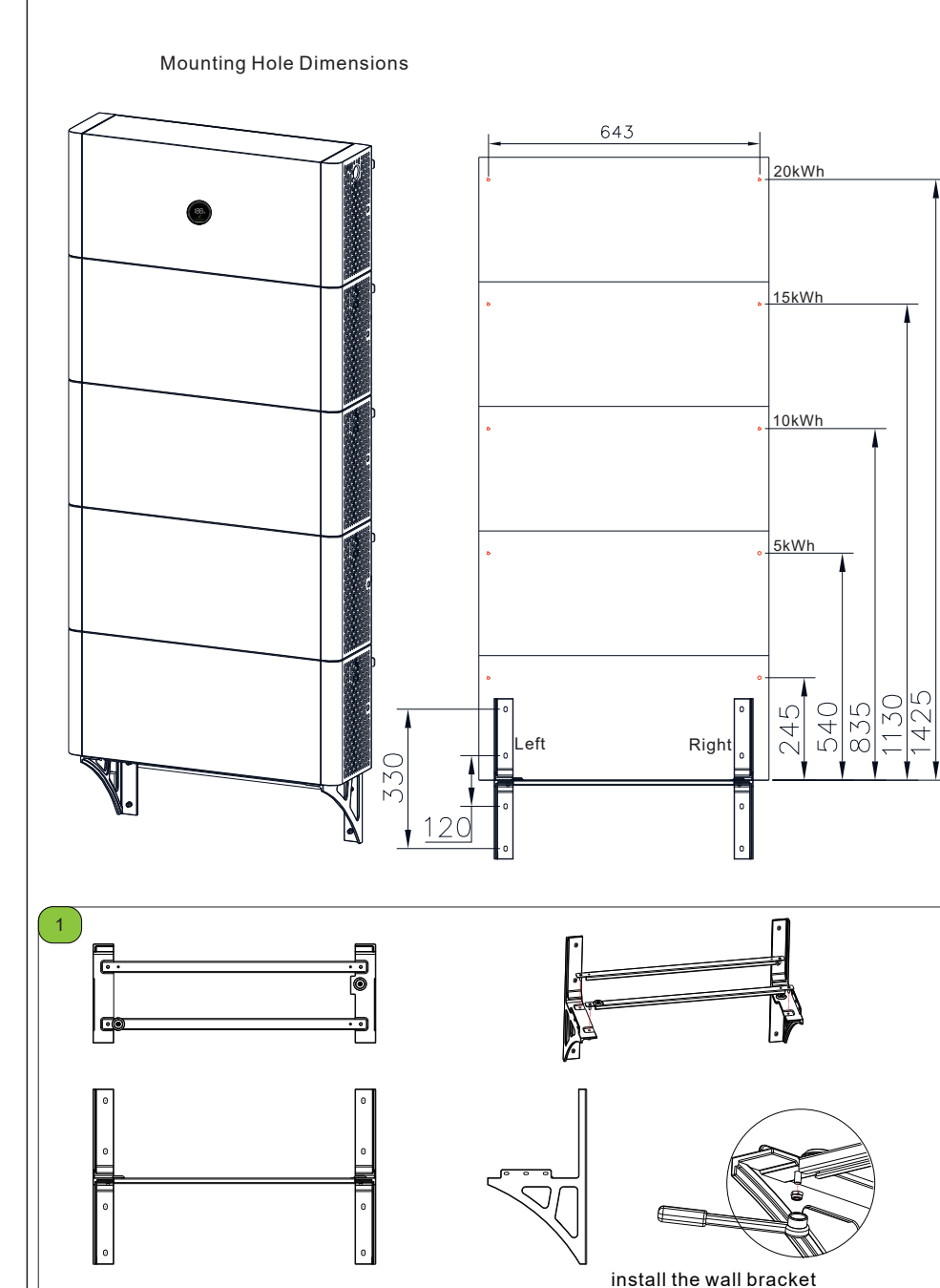
3-2 Installation Procedure

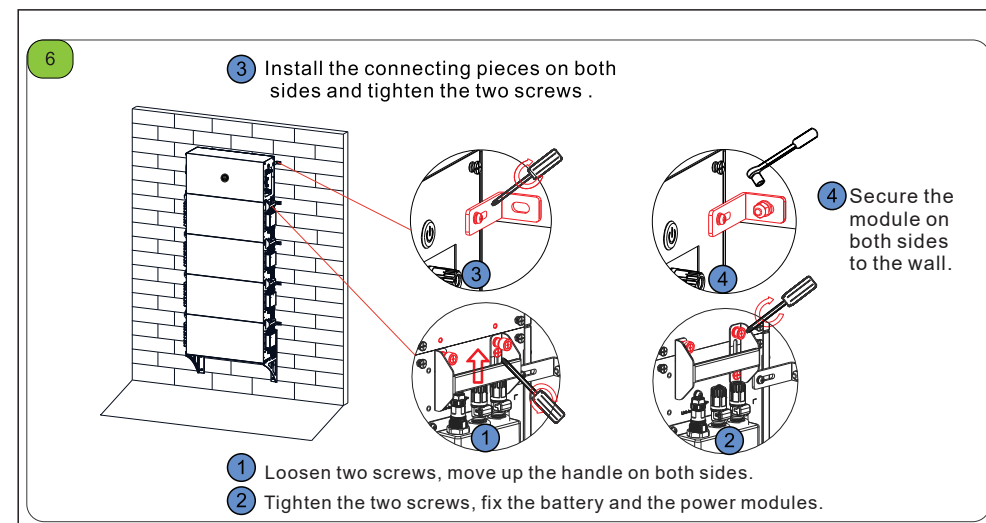
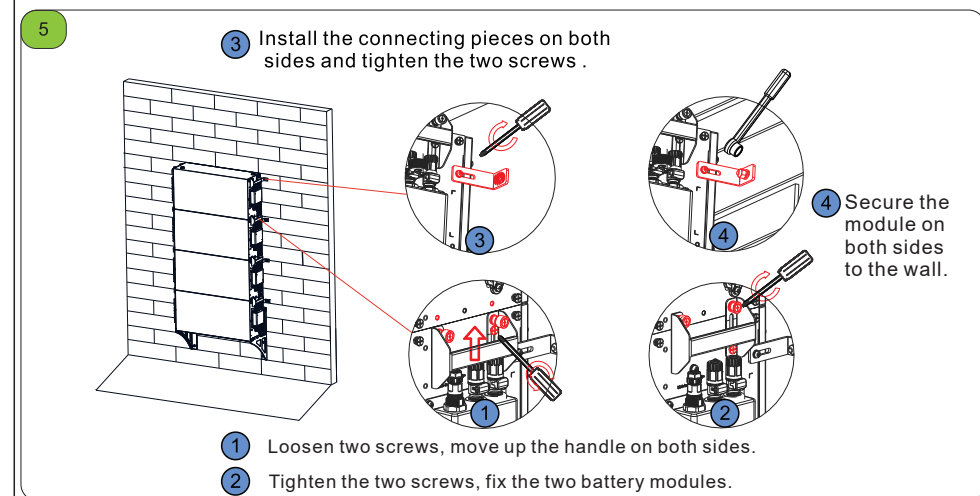
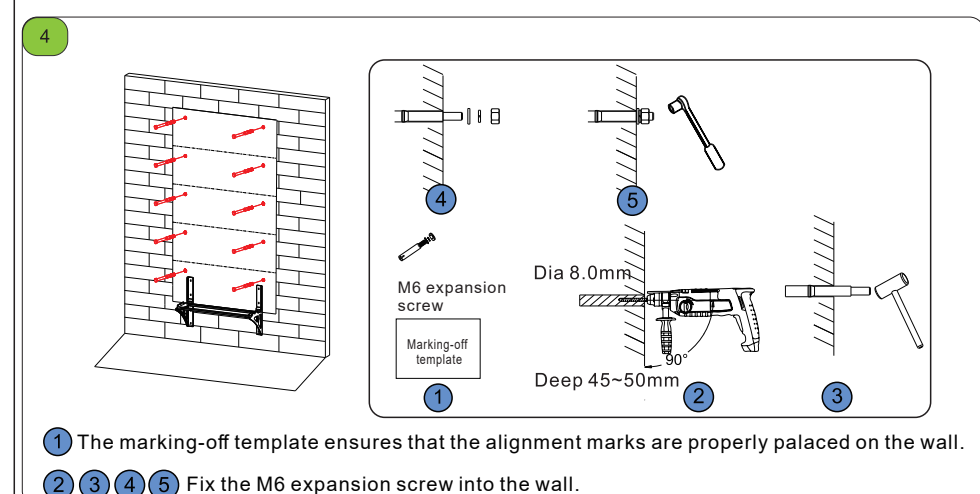
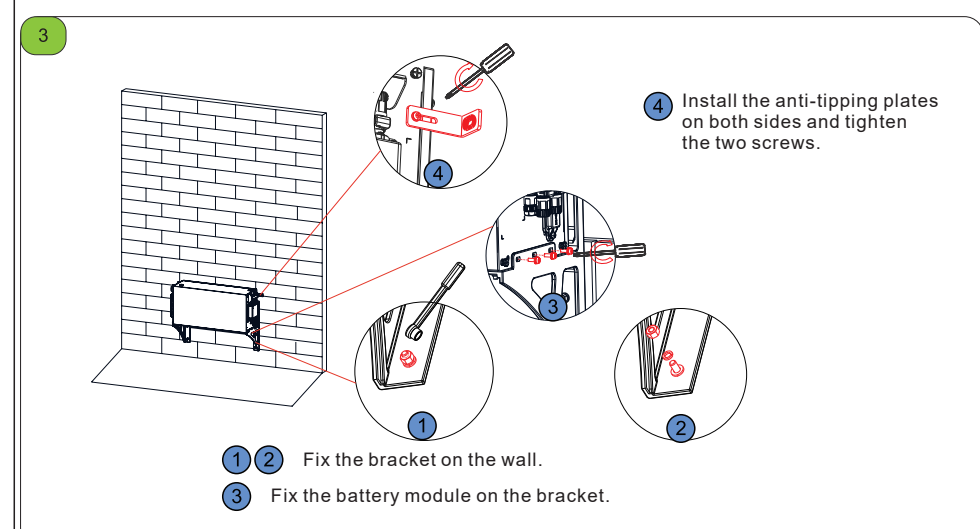
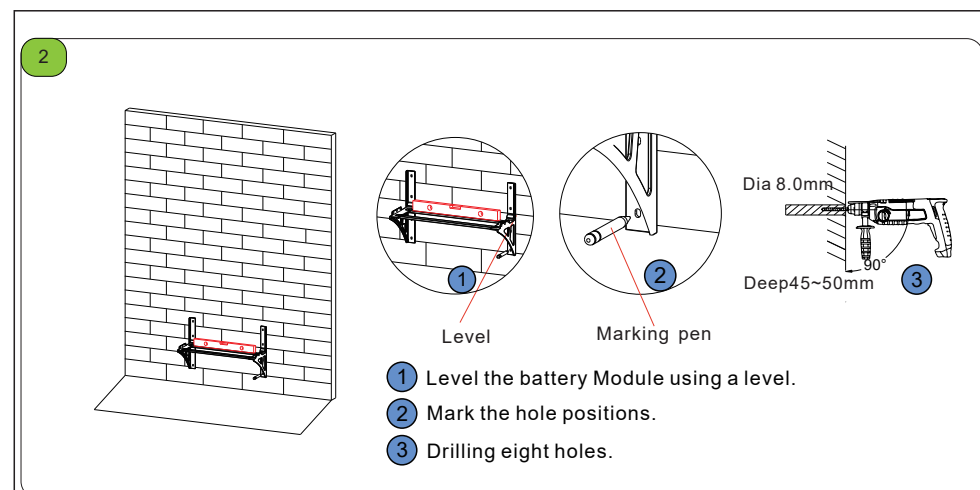


4. Wall-Mounted Installation



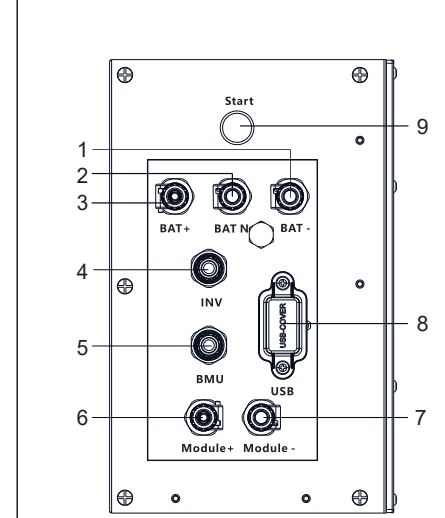
4-2 Installation Procedure





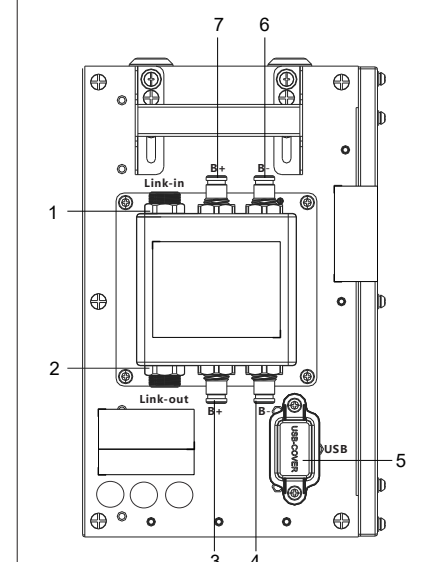
5.Wire Connection

5-1 APX 98020-P1 terminal & key description

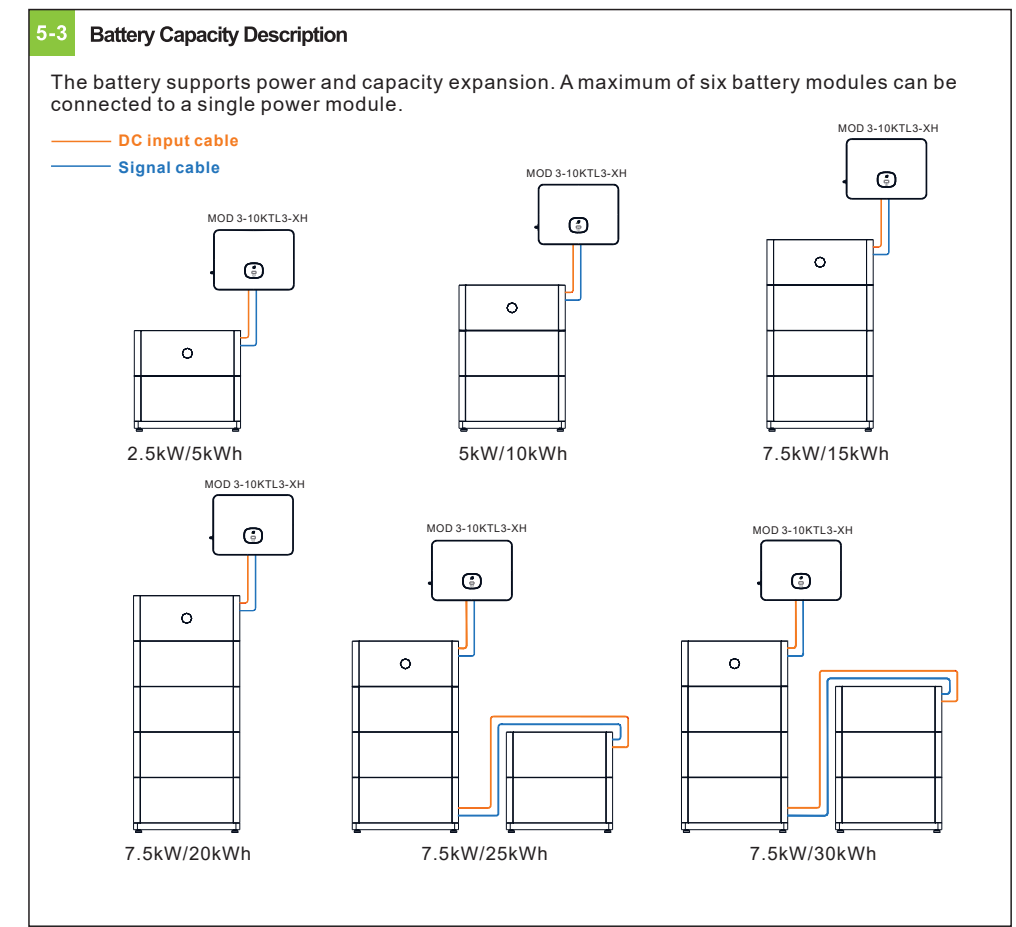


1	BAT-	Battery negative terminal to connected to the PCS
2	BAT N	Battery neutral terminal to connected to the PCS
3	BAT+	Battery positive terminal to connected to the PCS
4	INV	Communication terminal connect to the PCS
5	BMU	Communication terminal connect to the battery module (Link-in)
6	Module+	Connect to the positive battery terminal of the Battery Module (B+)
7	Module-	Connect to the positive battery terminal of the Battery Module (B-)
8	USB	USB terminal
9	Start	Start key

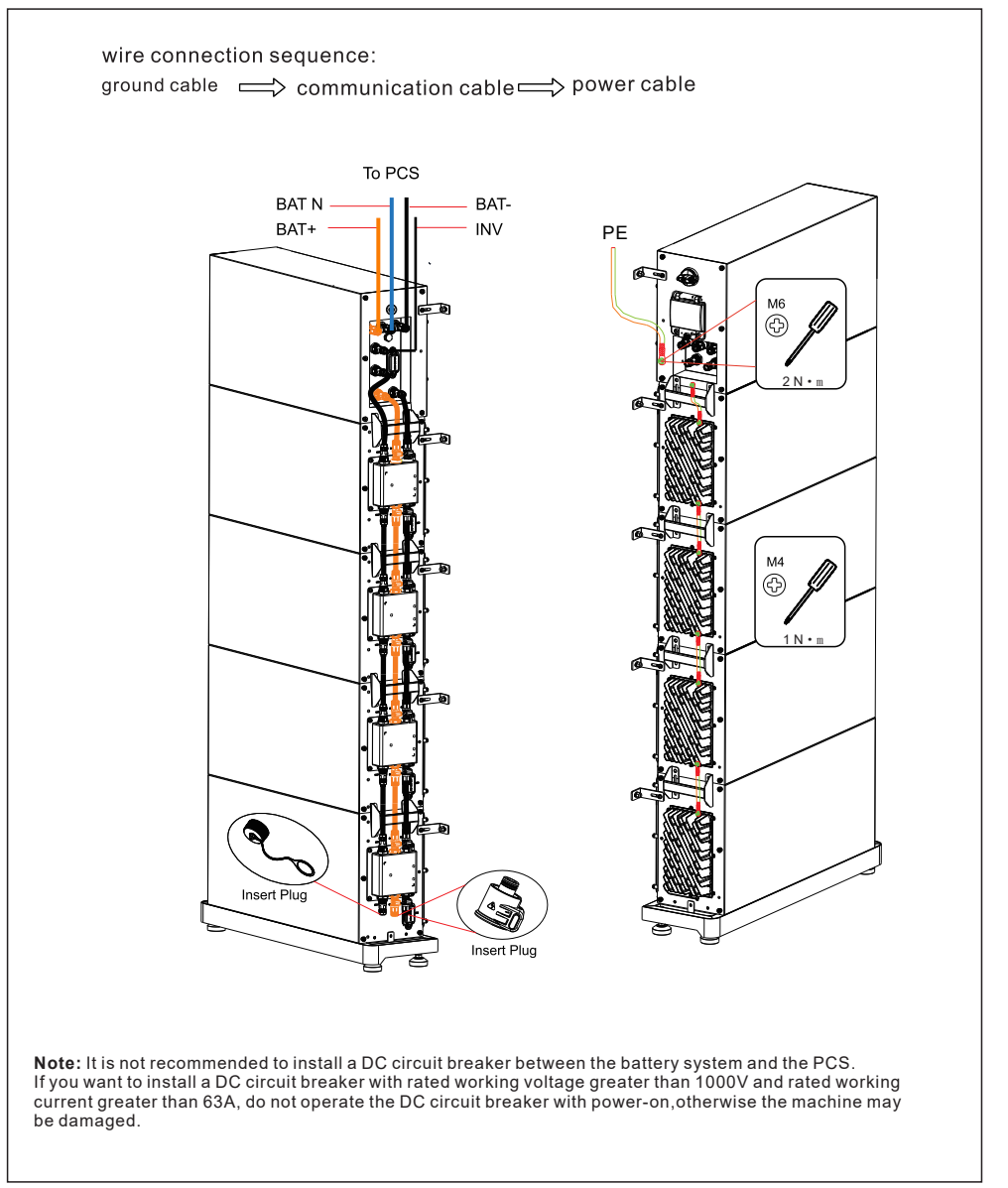
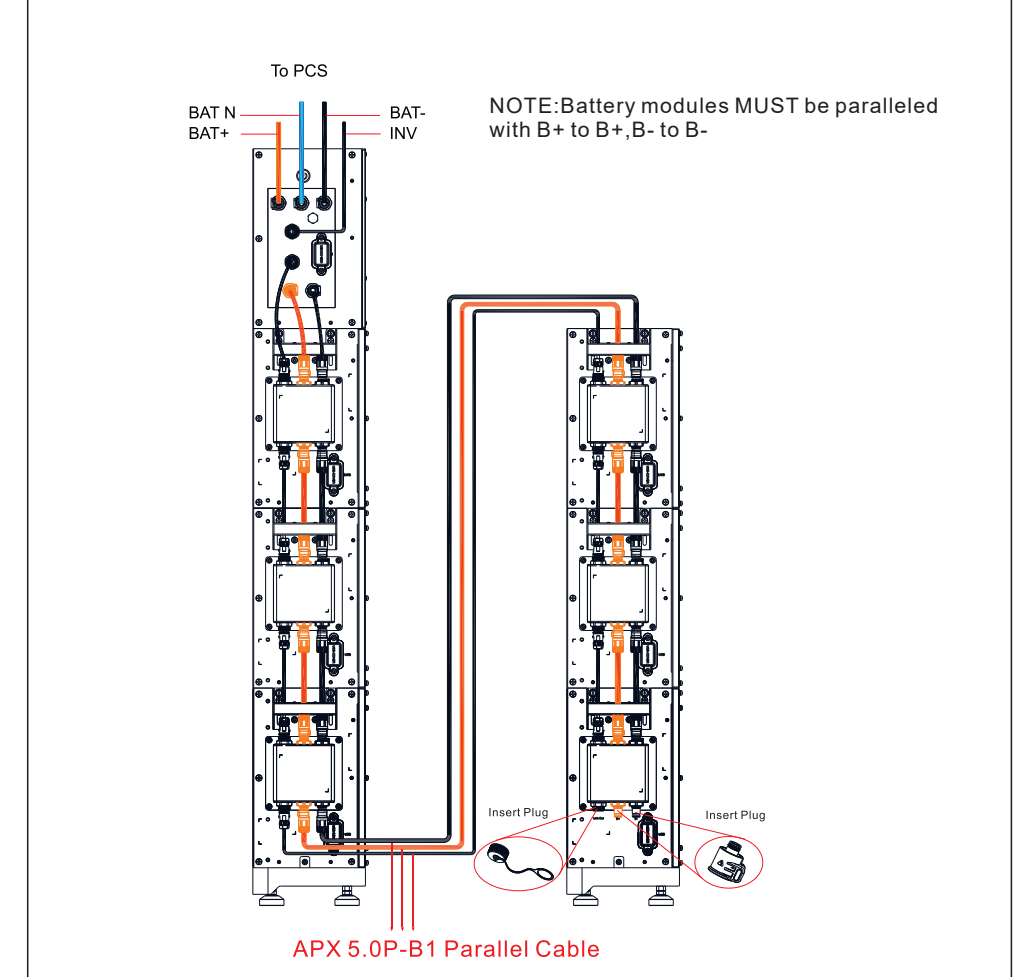
5-2 APX 5.0P-B1 Connection end face introduction



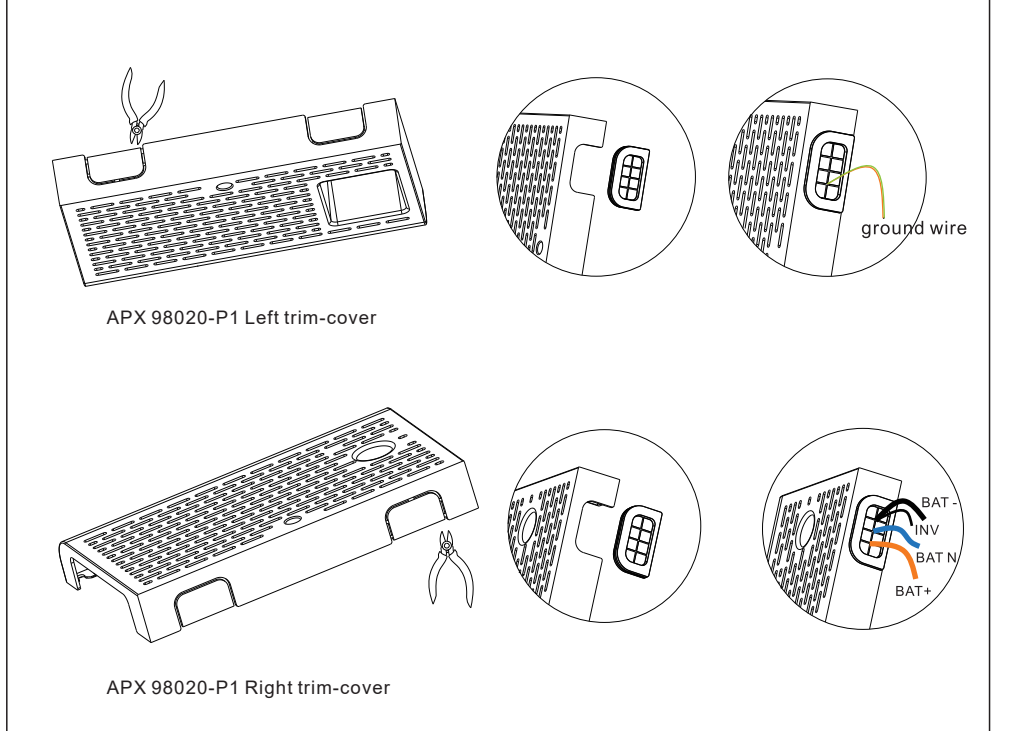
1	Link-in	Communication terminal Connect to another BM(Link-out) or the PM(BMU) Communication
2	Link-out	Communication terminal Connect to another BM(Link-in) or the PM(BMU)Communication
3	B+	Battery positive terminal Connect to another BM(B+)
4	B-	Battery negative terminal Connect to another BM (B-)
5	USB	USB terminal
6	B-	Battery negative terminal Connect to another BM(B-) or the PM (Module-)
7	B+	Battery positive terminal Connect to another BM(B-) or the PM (Module-)



5-4 Wiring diagram

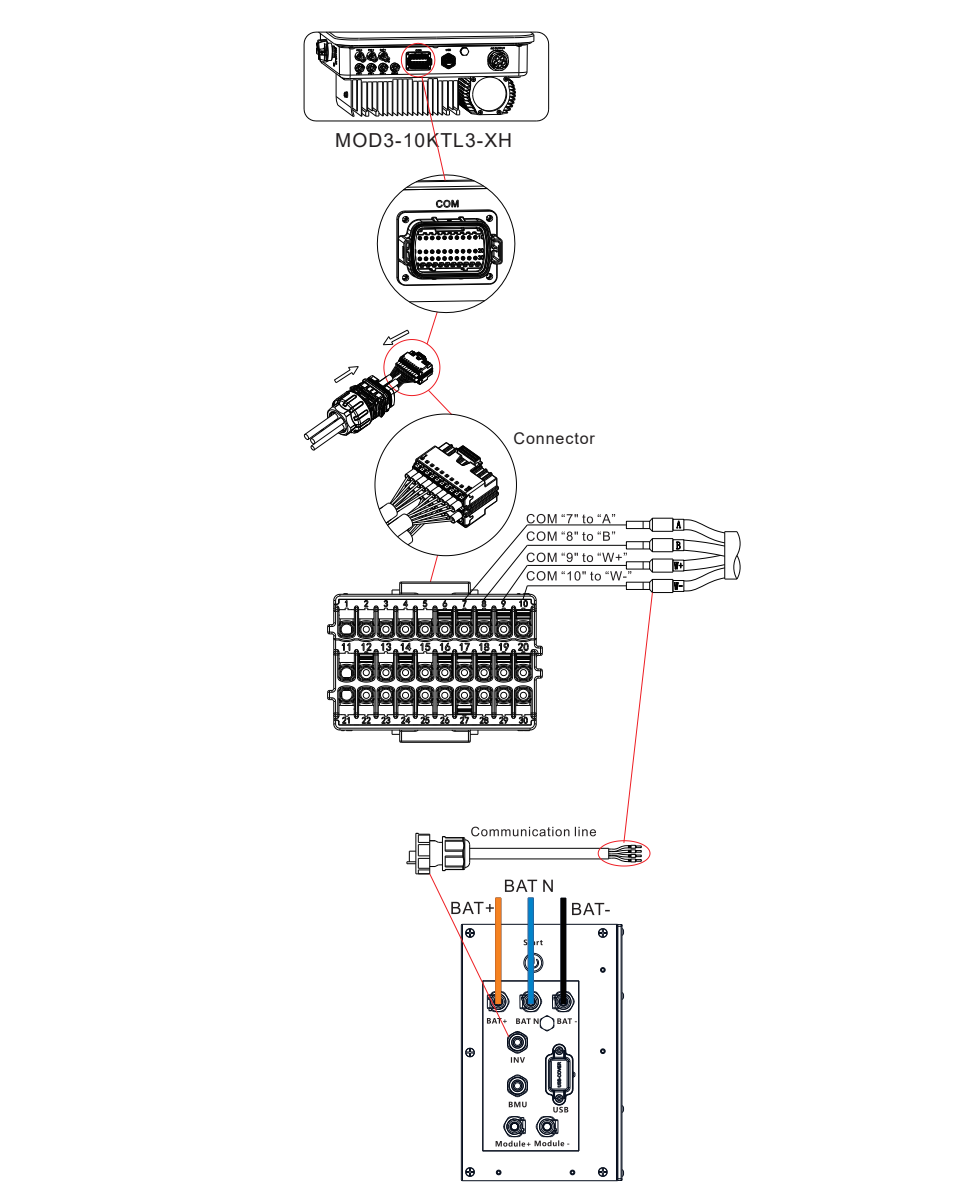


5-5 Routing Cables Out of the Cable Hole

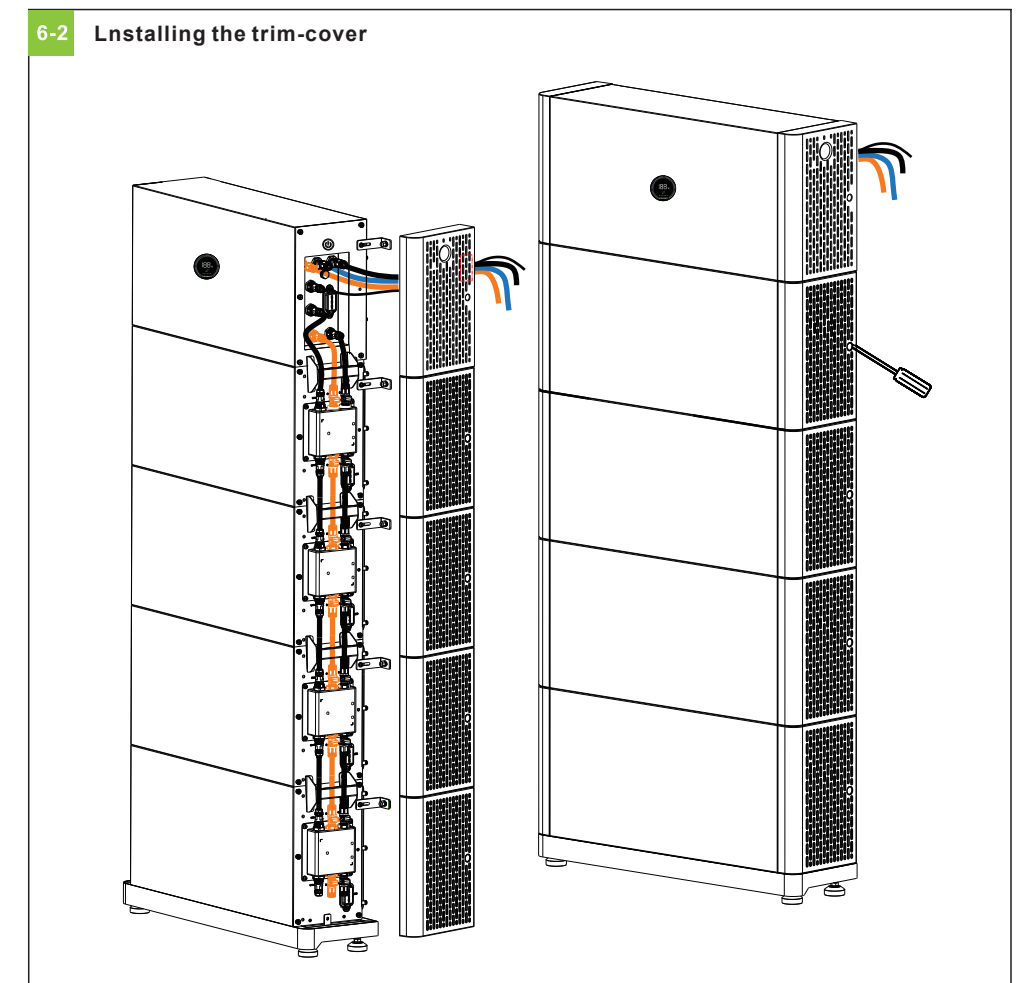
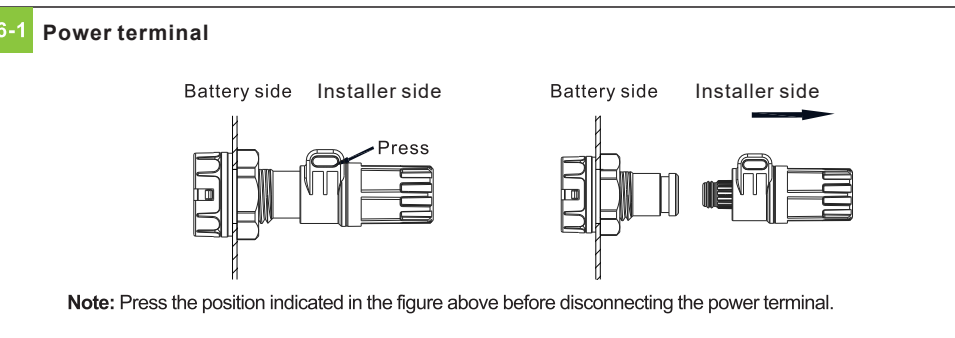


5-6 Communication port connection

APX 5.0-30.0P-S1			MOD 3-10KTL3-XH		
Silk screen	Terminal serial number	Definition	Silk screen	Terminal serial number	Definition
INV	1	WAKE- (W-)	COM	10	BAT.EN-
	2	WAKE+ (W+)		9	BAT.EN+
	7	RS485_B (B)		8	RS485B2
	8	RS485_A (A)		7	RS485A2



6. Terminal Connection



7. Key operation

Power on	1. Turn on the DC Switch 2. Press the start key for more than 5S	 Press →
Power off	Turn off the DC Switch (waiting for over 90S)	 Rotate

Note: 1. Before performing maintenance and repair work, ensure that the AC circuit breaker and the PV switch of the PCS, as well as the switch of the APX are disconnected. Wait for 15 minutes after the sys-tem is powered off and make sure that the LOGG (GROWATT) indicator on the APX is off. Do not perform any operations until the system is completely shut down.
2. When multiple battery systems are used in parallel connection, you only need to press the start key of one module to start the system.

8. Service and contact

Shenzhen Growatt New Energy Co., Ltd.
4-13/F, Building A, Sino-German (Europe) Industrial Park, Hangcheng Ave, Bao'an District, Shenzhen, China
+86 755 2747 1942 service@ginverter.com
www.ginverter.com

Download Manual
GR-UM-339-A-00