

- Note 1 X means uncertain status.
- Note 2 When screw or adjust the antenna, please note that only the metal part can be touched, and do not screw the plastic part, otherwise the antenna may be damaged.
- Note 3 If the equipment still fails to work upon above solutions, please contact your device customer service.



## H:Contact

If any technical problems, please contact us, with the following information in hand:

- ◆ Device model
- ◆ Serial number of product

### **Ningbo Ginlong Technologies Co., Ltd.**

No. 57 Jintong Road, Binhai Industrial Park  
Xiangshan, Ningbo, Zhejiang, 315712, P.R.China  
Tel: +86 (0)574 6578 1806  
Fax: +86 (0)574 6578 1606  
Email: [info@ginlong.com](mailto:info@ginlong.com)  
Web: [www.ginlong.com](http://www.ginlong.com)

**Please record the serial number of your monitor and quote this when you contact us.**



## Quick Guide

Data Logging Box WiFi GL-WE01

Version: 1.0

From this page

Data Logging Box WiFi is an external data logger in the Ginlong monitoring series.

By connecting with single or multiple inverters through RS485/422 interface, the Kit can collect information of PV/wind systems from inverters. With the integrated WiFi function, the Kit can connect to router and transmit data to the web server, realizing remote monitoring for users. In addition, Ethernet is also available for connection to router, enabling transmission of data.

Users can check the runtime status of the device by checking the 4 LEDs on the panel, indicating Power, 485/422, Link and Status respectively.

**A:** Unpack

**B:** Install data logger

**C:** Connect data logger and inverters

**D:** Network setting

**E:** Create Ginlong Home account

**F:** Create plants

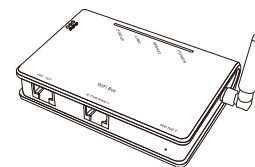
**G:** Trouble shootings

This Quick Guide is intended to assist users in quick installation and start of Data Logging Box WiFi. If any problem, please refer to corresponding chapters of [WiFi Box User Manual](#) for details.

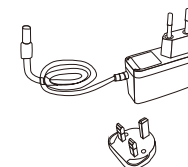
## A:Unpack

### 1. Checklist

After unpacking the box, please make sure all the items are contained as follows:



① 1 PV/wind data logger (Data Logging Box WiFi)



② 1 power adapter with European or British plug



③ 2 screws

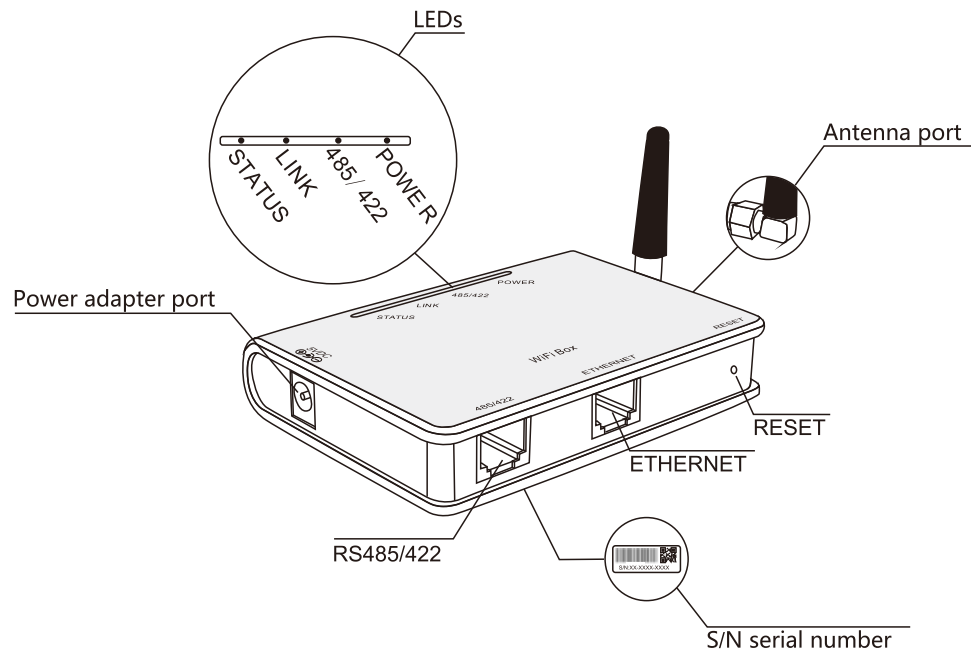


④ 2 expandable rubber hoses



⑤ 1 Quick Guide

## 2. Interface and connection



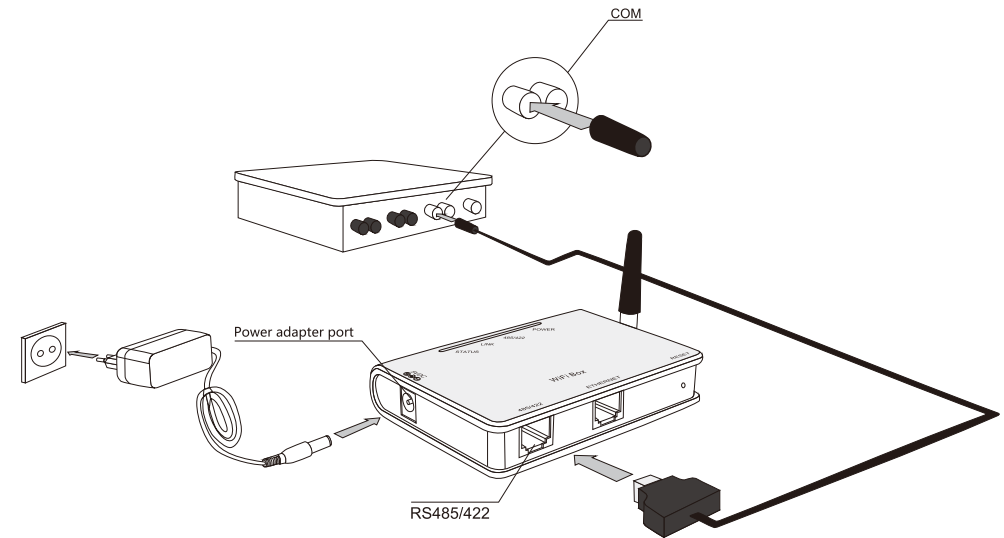
## B: Install data logger

WiFi Box can be either wall-mounted or flatwise.

## C: Connect data logger and inverters

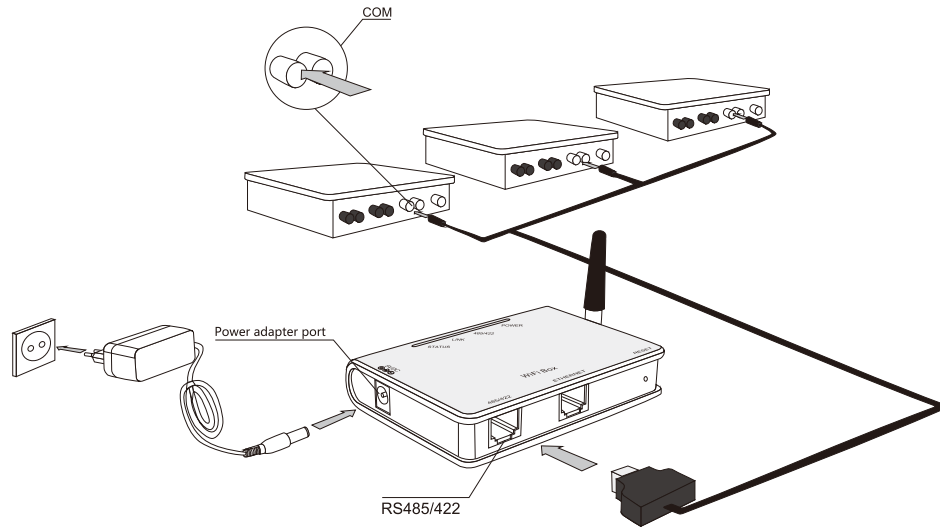
**Notice:** Power supply of inverters must be cut off before connection. Make sure that all connections are completed, then power the data logger and inverters, otherwise personal injury or equipment damage may be caused.

### 1. Connection with single inverter



Connect inverter and data logger with 485 cable, and connect data logger and power supply with power adapter.

## 2. Connection with multiple inverters



- 1.Parallel connect multiple inverters with 485 cables.
- 2.Connect all inverters to data logger with 485 cables.
- 3.Set different address for each inverter. For example, when connecting three inverters, the address of first inverter must be set as "01", the second must be set as "02", and the third must be set as "03" and so on.
- 4.Connect data logger to power supply with power adapter.

## 3. Confirm connection

When all connections are finished and with the power on for about 1 minute, check the 4 LEDs. If POWER and STATUS are permanently on, and LINK and 485/422 are permanently on or flashing, connections are successful. If any problems, please refer to G:Debug.

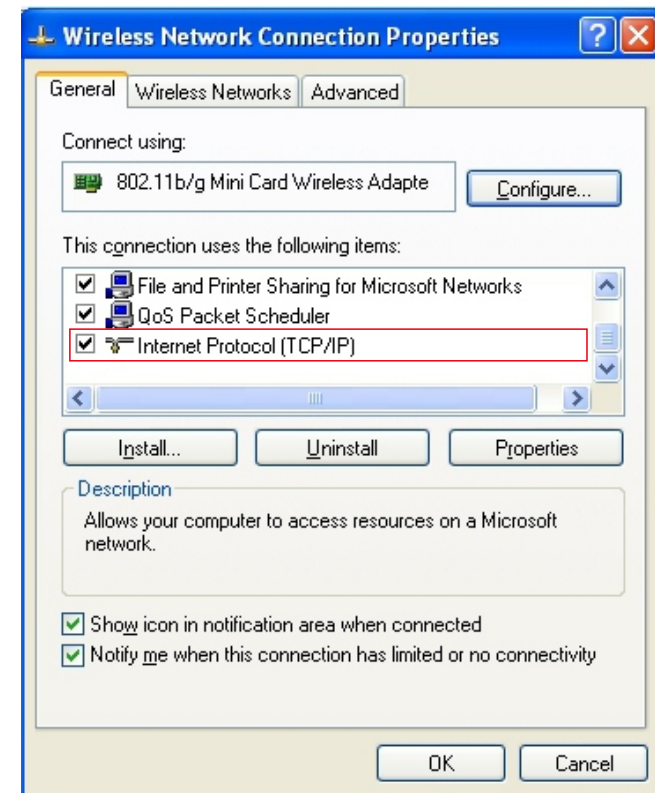
## D:Network setting

WiFi Box can transfer information via either WiFi or Ethernet, users may choose the appropriate method accordingly.

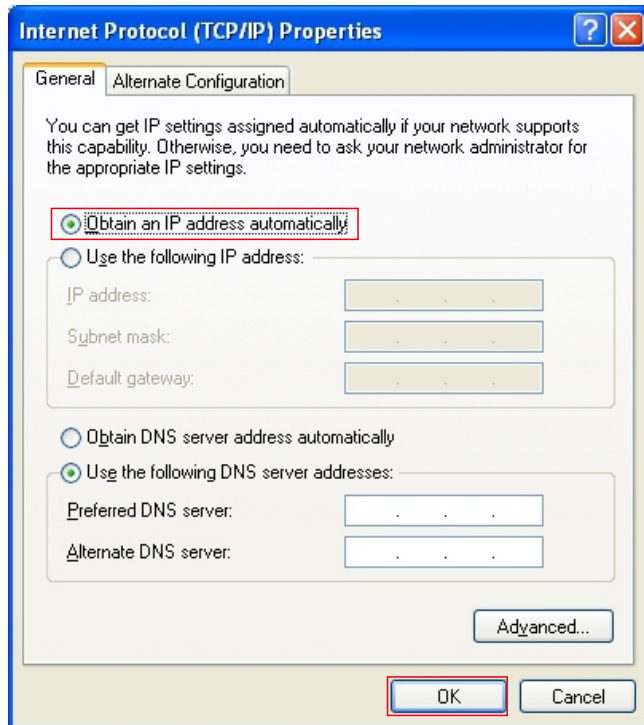
### I. Connection via WiFi

**Notice:** The setting hereinafter is operated with Window XP for reference only. If other operating systems are used, please follow the corresponding procedures.

1. Prepare a computer or device, e.g. tablet PC and smartphone, that enables WiFi.
2. Obtain an IP address automatically
  - ① Open [Wireless Network Connection Properties](#), double click [Internet Protocol \(TCP/IP\)](#).

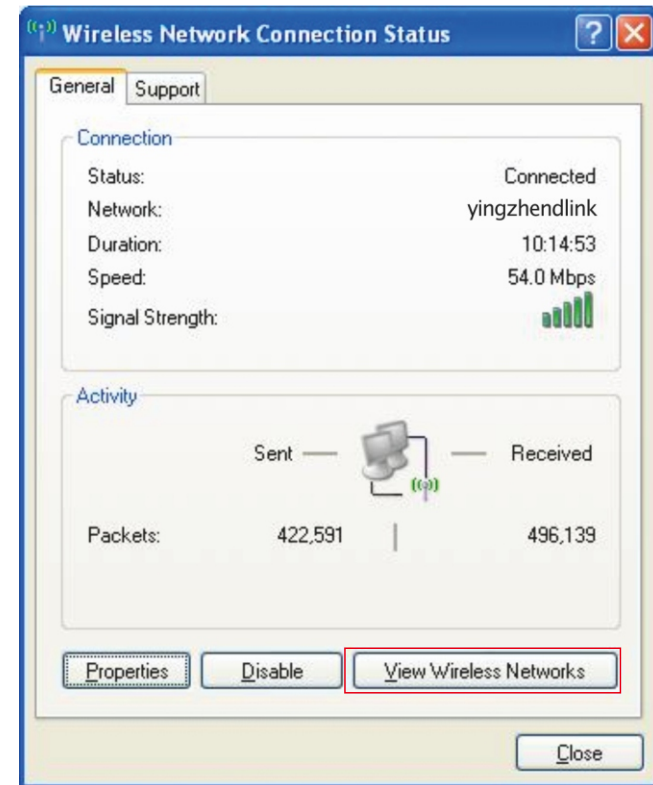


- ② Select **Obtain an IP address automatically**, and click **OK**.

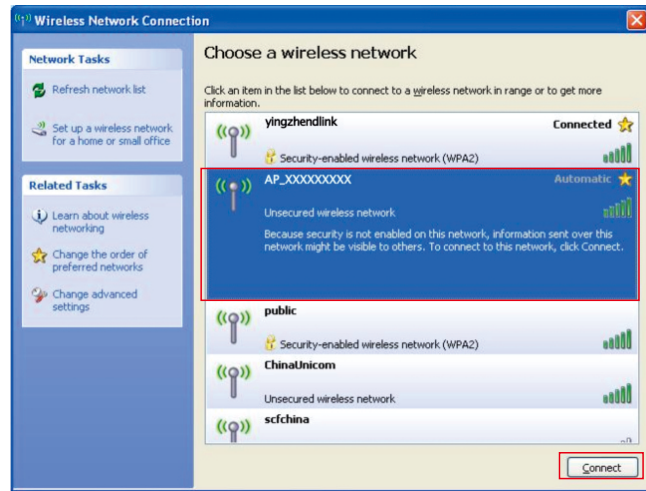


3. Set WiFi connection to the data logger

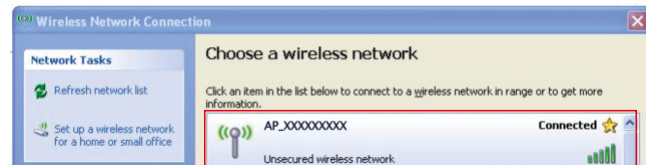
- ① Open wireless network connection and click **View Wireless Networks**.



- ② Select wireless network of the data logging module, no passwords required as default. The network name consists of **AP** and the **serial number of the product**. Then click **Connect**.



- ③ Connection successful.

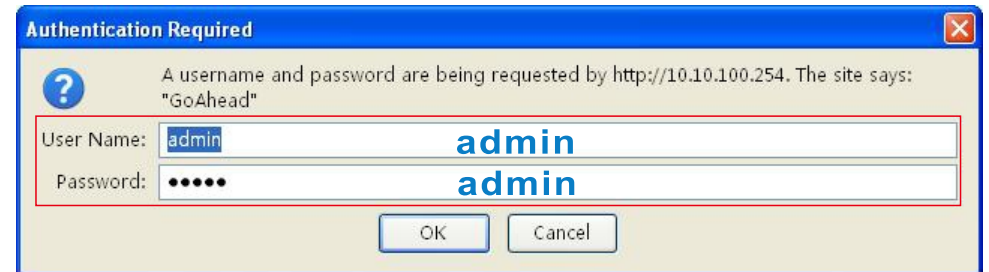
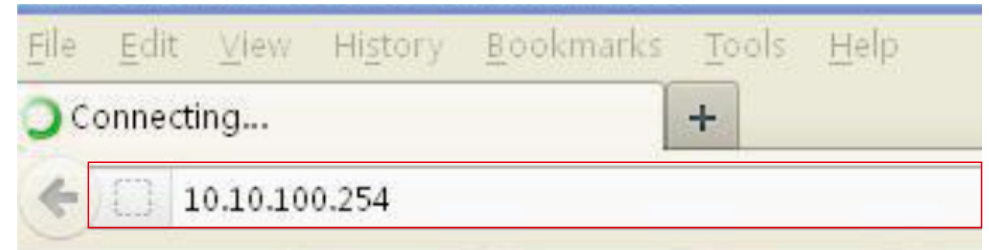


**Notice:** If **AP\_(serial number of product)** is not available in the wireless network list, there may be problems in the connection or setting of data logging. Please refer to 5. Debug of User Manual for troubleshooting.

4. Set parameters of data logger

- (a) Open a web browser, and enter **10.10.100.254**, then fill in username and password, both of which are **admin** as default.

*Supported browsers: Internet Explorer 8+, Google Chrome 15+, Firefox 10+*



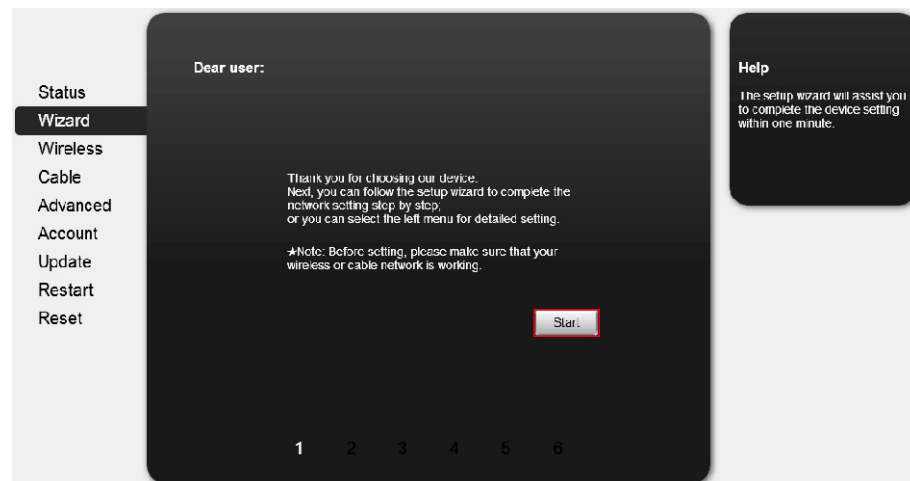
- (b) In the configuration interface of data logger, you can view general information of the data logger.

Follow the setup wizard to start quick setting.

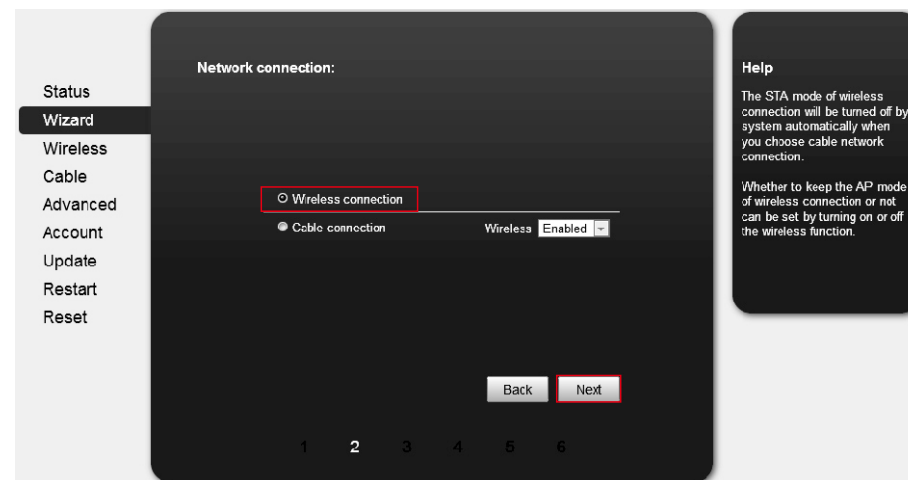
① Click **Wizard** to start.



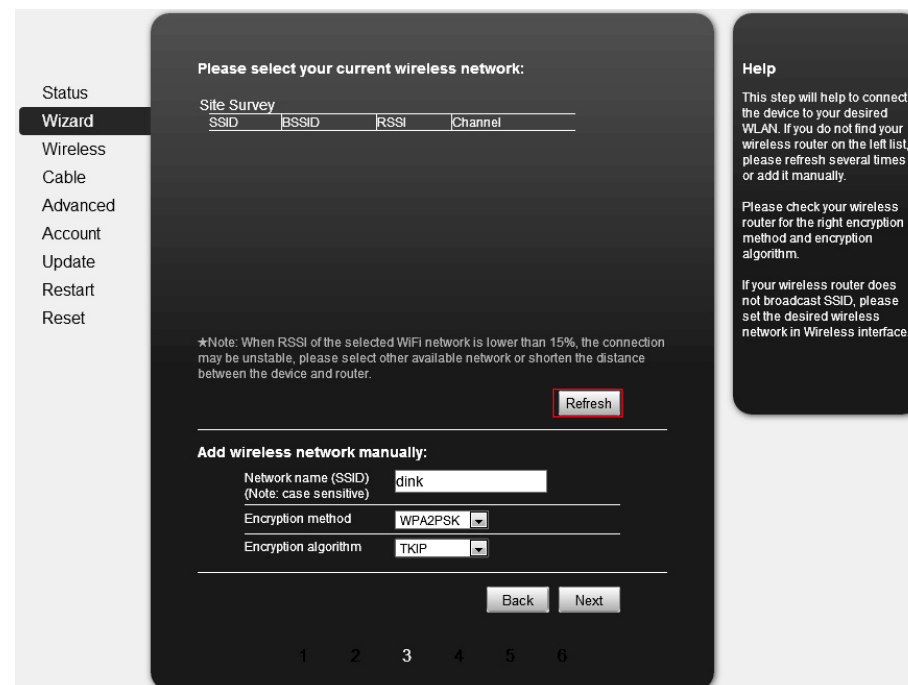
② Click **Start** to continue.



③ Select **Wireless connection**, and click **Next**.



④ Click **Refresh** to search available wireless networks, or add it manually.





⑤ Select the wireless network you need to connect, then click **Next**.

**Notice:** If the signal strength (RSSI) of the selected network is <10%, which means unstable connection, please adjust the antenna of the router, or use a repeater to enhance the signal.

**Please select your current wireless network:**

Site Survey	SSID	BSSID	RSSI	Channel
<input checked="" type="radio"/>	dlink	14:d6:4d:75:71:a0	85%	8

\*Note: When RSSI of the selected WiFi network is lower than 15%, the connection may be unstable, please select other available network or shorten the distance between the device and router.

**Add wireless network manually:**

Network name (SSID)

Encryption method

Encryption algorithm

⑥ Enter the password for the selected network, then click **Next**.

**Please enter the wireless network password:**

Password (8-64 bytes)  
(Note: case sensitive)

Re-enter password

Show Password

⑦ Select **Enable** to obtain an IP address automatically, then click **Next**.

**Please fill in the following information:**

Obtain an IP address automatically

IP address

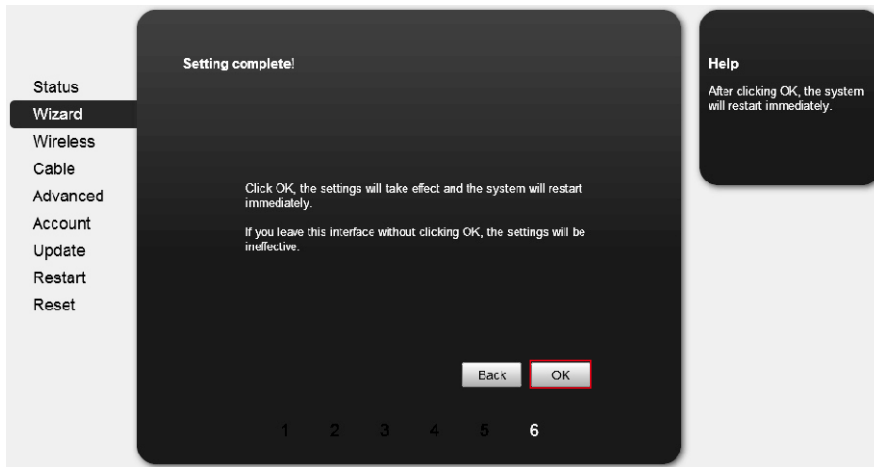
Subnet mask

Gateway address

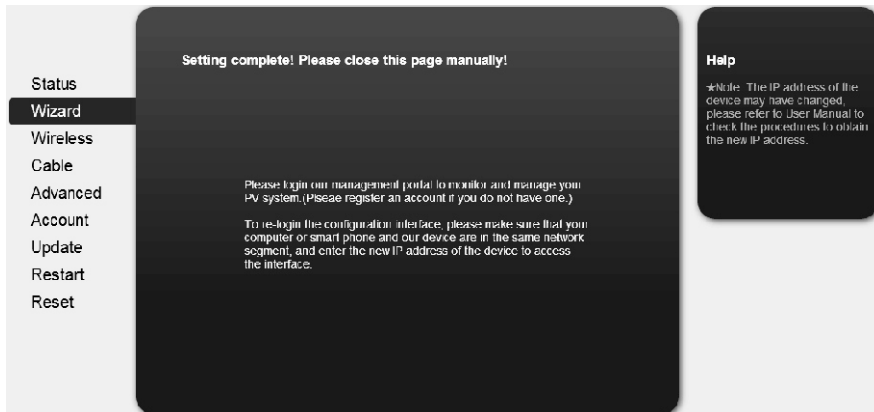
DNS server address



⑧ If setting is successful, the following page will display. Click **OK** to restart.



⑨ If restart is successful, the following page will display.



**Notice:** After setting is completed, if STATUS is permanently on after about 30 seconds, and the 4 LEDs are all on after 2-5 minutes, the connection is successful. If STATUS is flashing, which means unsuccessful connection, please repeat the setting from step 3.

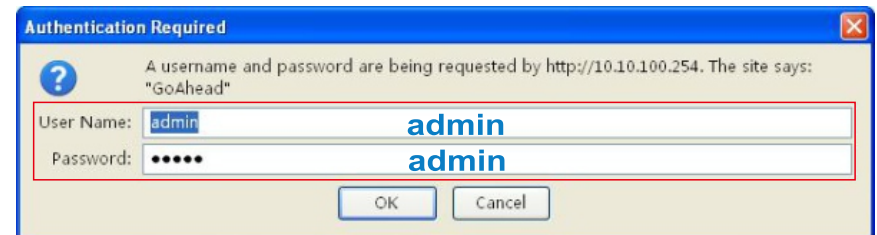
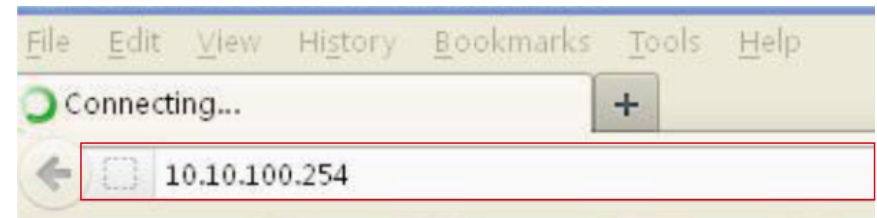
## II.Connection via Ethernet

1. Connect router and data logger via Ethernet port with network cable .
2. Reset the data logger.

**Reset:** Press the reset button with a needle or open paper clip and hold for a while when the 4 LEDs should be on. Reset is successful when 3 LEDs, except POWER, turn off.

3. Enter the configuration interface of your router, and check the IP address of the data logger assigned by the router. Open a web browser and enter the assigned IP address to get access to the configuration interface of the data logger. Fill in username and password, both of which are **admin** as default.

Supported browsers: Internet Explorer 8+, Google Chrome 15+, Firefox 10+



#### 4. Set parameters of data logger

In the configuration interface of data logger, you can view general information of the device.

Follow the setup wizard to start quick setting.

① Click **Wizard** to start .

**Wizard**

**Device information**

Device serial number	501292599
Firmware version	S-W01 V2.0.4A(qinlong)
Wireless AP mode	Enable
SSID	AP_501292599
IP address	10.10.100.254
MAC address	AC:CF:23:10:F3:58
Wireless STA mode	Enable
Router SSID	dlink
Signal Quality	76%
IP address	192.168.0.103
MAC address	AC:CF:23:10:F3:59
Cable mode	Disable
IP address	
MAC address	

**Remote server information**

**Help**

The device can be used as a wireless access point (AP mode) to facilitate users to configure the device, or it can also be used as a wireless information terminal (STA mode) to connect the remote server via wireless router.

If AP mode is turned off, or AP mode is on while STA mode is off, the device can only be connected to remote server through cable network.

② Click **Start** to continue .

**Start**

Dear user:

Thank you for choosing our device. Next, you can follow the setup wizard to complete the network setting step by step, or you can select the left menu for detailed setting.

\*Note: Before setting, please make sure that your wireless or cable network is working.

1 2 3 4 5 6

**Help**

The setup wizard will assist you to complete the device setting within one minute.

③ Select **Cable Connection** , and you can choose to enable or disable the wireless function, then click **Next** .

**Next**

Network connection:

Wireless connection

Cable connection

Wireless: Enabled

Enabled

Disabled

Back Next

1 2 3 4 5 6

**Help**

The STA mode of wireless connection will be turned off by system automatically when you choose cable network connection.

Wireless: To keep the AP mode of wireless connection or not can be set by turning on or off the wireless function.

- ④ Select **Enable** to obtain an IP address automatically, then click **Next**.

The screenshot shows a configuration wizard with a sidebar on the left containing menu items: Status, Wizard (highlighted), Wireless, Cable, Advanced, Account, Update, Restart, and Reset. The main area is titled "Please fill in the following information:" and contains a form with the following fields: "Obtain an IP address automatically" (a dropdown menu with "Enable" selected), "IP address" (text box with "0.0.0.0"), "Subnet mask" (text box with "0.0.0.0"), "Gateway address" (text box with "0.0.0.0"), and "DNS server address" (empty text box). At the bottom of the form are "Back" and "Next" buttons. A "Help" box on the right contains the text: "Most systems support the function of DHCP to obtain IP address automatically. Please select disable and add it manually if your router does not support such function." At the bottom of the screen is a progress indicator with steps 1 through 6, where step 4 is highlighted.

- ⑥ If restart is successful, the following page will display.

The screenshot shows the "Setting complete!" page. The sidebar on the left has the same menu items as the previous page. The main area displays the text: "Setting complete! Please close this page manually!". Below this text are instructions: "Please login our management portal to monitor and manage your PV system. (Please register an account if you do not have one.)" and "To re-login the configuration interface, please make sure that your computer or smart phone and our device are in the same network segment, and enter the new IP address of the device to access the interface." A "Help" box on the right contains the text: "\*Note: The IP address of the device may have changed, please refer to User Manual to check the procedures to obtain the new IP address." At the bottom of the screen is a progress indicator with steps 1 through 6, where step 6 is highlighted.

- ⑤ If setting is successful, the following page will display. Click **OK** to restart.

This screenshot is identical to the previous one, showing the "Setting complete!" page. The "OK" button at the bottom of the main area is highlighted with a red box, indicating the next step in the process.

**Notice:** After setting is completed, **if STATUS is permanently on after about 30 seconds, and the 4 LEDs are all on after 2-5 minutes, the connection is successful. If STATUS is flashing, which means unsuccessful connection, please repeat the setting from step 3.**

## E: Create Ginlong Home account

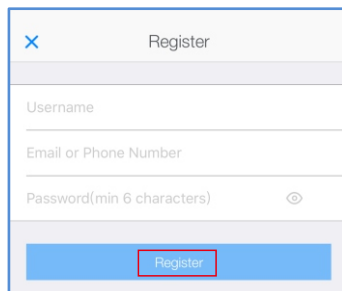
Step1: Phone scanning and sending QR code to download registration APP .  
( Or search Ginlong Home or Ginlong Pro in the App Store and Google Play Store )



Step2: Click to register.

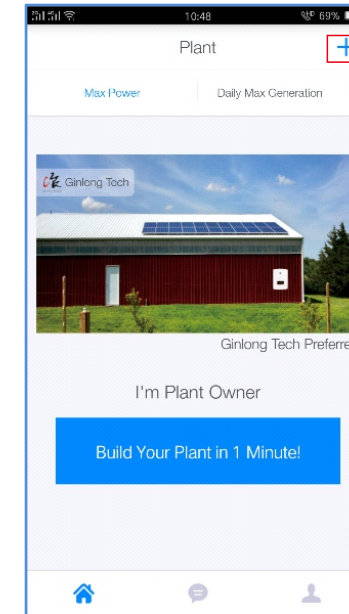


Step3: Fill in the content as required and click on the register again.



## F: Create plants

1: In the absence of login, click "1 minute to create the power station" in the center of the screen. Click "+" in the upper right corner to create the power station.



2: Scan the code

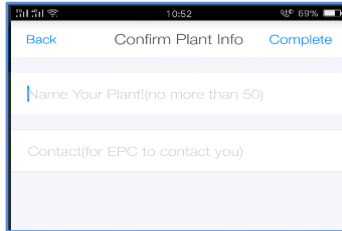
APP only supports the scanning of the bar code/QR code of dataloggers. If there is no datalogger, you can click the "no device" and jump to the next step: input plant information.

3: Input plant information

The system automatically locates the location of the station via the mobile phone GPS. If you are not in the site, you can also click "map" to select on the map.

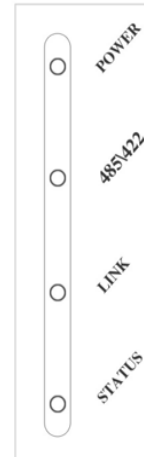
4: Enter the name of the station and the owner's contact number

The name of the station is suggested to use your name, and the contact number is recommended to use your mobile phone number so as to have the installer operation in the later period.



## G: Trouble shootings

### I. LED indication



LEDs	Status	Meaning
POWER	On	Power is normal
	Off	Power is abnormal
485\422	On	Connection between data logger and inverter is normal
	Flashing	Data is transmitting between data logger and inverter
	Off	Connection between data logger and inverter is abnormal
STATUS Off	LINK Flashing	Connecting WiFi
STATUS On	LINK Flashing	Data is transmitting via WiFi
	LINK On	Connection of data logger is normal
	LINK Off	Connection of data logger is abnormal
STATUS Flashing	LINK Flashing	Data is transmitting via port
	LINK On	WiFi in AP mode, a terminal connected
	LINK Off	WiFi in AP mode, no terminal connected

## II. Trouble shooting

Phenomenon				Meaning	Solutions
POWER	485/422	LNK	STATUS		
Off	Off	Off	Off	No power supply	Connect power supply and ensure good contacts.
On	Off	X	X	Connection with inverter is abnormal	Check the connection cable, and ensure that the cable order comply with T568B.
					Ensure the stability of RJ-45.
					Ensure that inverter is working under normal condition.
On	X	X	Flashing	In AP mode	Set network.
On	X	Flashing	Off	No WiFi connected to data logger	Check if the antenna is loose or falls off. If so, please screw to tighten.
					Check if the required WiFi is covered.
					Reset data logger and set network again.
On	On	Off	On	Connection to remote server failed	Check if WiFi can connect to Internet
On	Off	Off	Off	System under initialization	Wait for 2 minutes, if no changes occur, reset data logger.
Weak WiFi					Check the connection of antenna
					Add WiFi repeater
					Connect via Ethernet