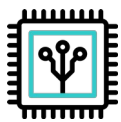


Mediterranean Sea 8kW Single Phase



Silicon Carbide Technology
Higher efficiency & Longer lifespan



Battery Charge/Discharge Rate
Up to 85A per input (170A max)



Backup Power Supply
Dedicated EPS Port



Smart Tariff Compatible
Smart energy device integration & intelligent work modes



UK Cloud
Real time visibility
Monitor & configure from anywhere

Input Parameter (PV)

| | |
|---------------------------------|--------------------|
| Max. DC Input Power | 16 kWp |
| Starting Voltage | 140 V |
| Max. Input Voltage | 800 V |
| MPPT Voltage Range | 130-800 V |
| Number of MPPT | 3 |
| Input String Per MPPT | 1/1/1 |
| Nominal Input Voltage | 600V |
| MPPT Max. Input Current | 20 A / 20 A / 20 A |
| MPPT Max. Short Circuit Current | 24 A / 24 A / 24 A |

On-grid Parameter (AC)

| | |
|------------------------------|-------------|
| Max Output Power | 8 kW |
| Max. Output Current | 42 A |
| Nominal Grid Voltage | 230 V |
| Max. Input Current from Grid | 52 A |
| Grid Voltage Range | 185 - 276 V |
| Frequency Range | 45 - 65 Hz |
| Power factor | -0.8 - 0.8 |
| THDi(@rated power) | <3% |

Backup Terminal (AC)

| | |
|-----------------------------------|--------|
| Nominal Output Power | 8 kW |
| Nominal Voltage | 230 V |
| Nominal Frequency | 50 Hz |
| Nominal Output Current | 34.78A |
| Output THDu (@Linear Load) | < 3% |

General Data

| | |
|--|--|
| AC Connection` | Single Phase |
| PV Max. Efficiency | 98.20% |
| Battery Charging / Discharging Efficiency | 95.00% |
| Standby Power Loss | ≤15W |
| Dimension (W x H x D) | 465x 665x 165mm |
| Weight | 34 kg |
| Noise Emission | <45dB |
| Operating Temperature Range | -25 °C ~ +60 °C (>45°C Derating) |
| Humidity Range | 5% ~ 95% |
| Cooling Method | Heatsink & Fan |
| IP Rating | IP65 |
| Monitoring | LED & APP |
| Communication | Voltage & Current CT Clamp (2-wire) RS485 & Wi-Fi Dongle |

Battery

| | |
|---|---------------------------------|
| Battery Type | Sodium-Ion |
| Battery Inputs | 2 |
| Nominal Battery Voltage | 45 V |
| Battery Voltage Range | 33 - 60 V |
| Max. Charging Voltage | 60 V |
| Max. Continuous Charging / Discharging Current | Up to 85 A per input (170A max) |

Certificates & Approvals

| | |
|---------------|--|
| CE-LVD | IEC62109-1&2, IEC62040-1 |
| CE-EMC | EN61000-6-1, EN61000-6-2, EN61000-6-3, EN61000-6-4 EN 61000-4-16, EN 61000-4-18, EN 61000-4-29 |
| Grid | G98, G99, G100, VDE-AR-N 4105, VDE 0126-1-1 EN 50549-1, CEI 0-21, AS/NZS4777.2 NRS 097-2-1 |

Protection Mechanisms

- ✓ DC Switch
- ✓ PV Insulation Resistance Detection
- ✓ Residual Current Monitoring
- ✓ Anti-islanding Protection
- ✓ AC Short Circuit Protection
- ✓ Overvoltage and Overload Protection
- ✓ AC Overvoltage Protection: Level 3
- ✓ Battery and PV Overvoltage: Level 2
- ✓ Surge Protection
- ✓ Lightning Protection
- ✓ Reverse Polarity Protection (PV & Battery)

