

Universal Side-of-Pole Mount  
BS09008



## Introduction

The Universal Side-of-Pole Mount BS09008 is a designed mainly for 30-60W solar modules, or the PV panels with an width dimension between 508mm to 680mm

In addition, Our BS09008 supports:

- ◆ A single PV panel up to 680mm (26.77 inches) in width.
- ◆ Pole diameters from 2.0 inches to 4.5-inches.( U-bolts for mounting to a 2”-3.5” OD pole)

## 1. Installer Responsibility

The installer is solely responsible for:

- ◆Complying with all applicable local or national building codes, including any that may supersede this manual
- ◆Ensuring that Bright Solar and other products are appropriate for the particular installation and the installation environment
- ◆Ensuring that the selected mount can support the array under live load conditions
- ◆Using only Bright Solar parts and installer-supplied parts as specified by Bright Solar. Substitution parts may void the warranty
- ◆Ensuring safe installation of all electrical aspects of the PV array.

## 2. Customer Support

Bright Solar makes every effort to ensure your mounting kit is easy to install. If you need assistance at any point with your installation or have suggestions on how we can improve your experience, call Bright Solar customer support: 86-512-82190750, or email to [sales@brightsolar-power.com](mailto:sales@brightsolar-power.com)

## 3. Tools Required For Assembly

The following tools are required to assemble the Universal Side-of-Pole Mount:

Tool	Used for
Wrenches Open-end wrench, Box-end wrench, or 3/8” or greater socket drive with sockets to support the following size hex heads: 5/16”	◆5/16” cap-end screws ◆5/16” bolts ◆Cap-end screws on hose clamps
Screwdriver	Cap-end screws on hose clamps

## 4. Component List

The Universal Side-of-Pole Mount BS09008 kit contains the following parts:

### Bucket x2

Attaches to the pole with the hose clamps, providing the link between the pole and the module/rail assembly



### U bolts x2

Attach to the pole, holding the Bucket. These hose clamps are compatible with poles ranging from 2.0 inches to 3.5 inches



### Rail supports x2

Attach directly to the back of the module



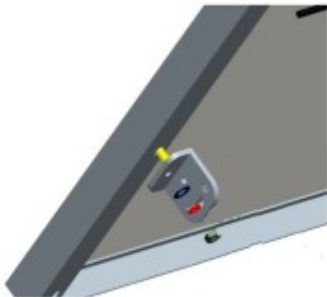
**Clips-A x4** Connecting the Bucket and rails,

**Clips-B x4** Connecting the panel and rails, allowing adjustment of the panel angle

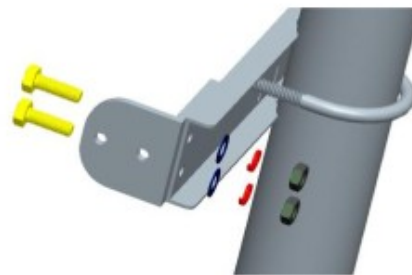


## 5. Assembly

**Step 1 - mounting the 4 pcs Clips-B on the PV module, and tighten the bolts**

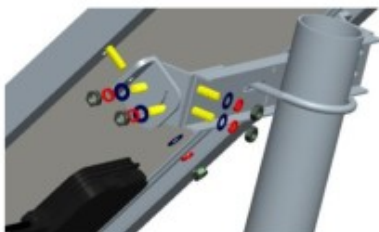


**Step 2 - attaching 4 pcs Clips-A to the Bucket, and tighten the bolts**



**Step 3 - attaching the top Clips-B to the Clips-A**

**Note: Do not tighten the screws first**



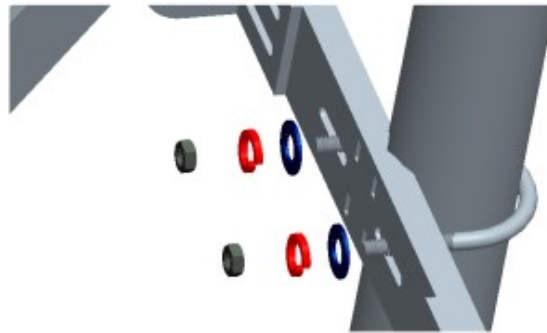
**Step 4 - attaching the bottom Clips-B to the two rail supports**



**Step5 - attaching the bottom Clips-A to the two rail supports**



**Step6 - attaching the bucket to the pole, after fixed the angle, tight all bolts**



**Note:**

1. Installer could adjust the angle between the clips and the support rail, or remove the U bolt on the pole, to find a best angle to received sunlight
2. Depending on the size the panel you started with, your assembly may look different than this picture, with the clips and rails facing in the opposite direction.

