



SmartMeters



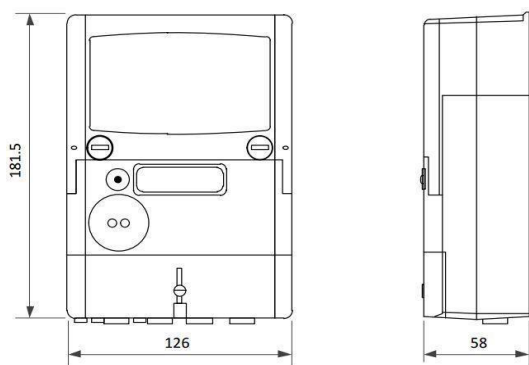
## Emlite EMGSM1 - Summary Sheet

The Emlite EMGSM1 is the perfect solution for simple AMR, (automatic meter reading), applications such as billing or micro-generation. This MID approved 100 Amp meter measures Imported and Exported Active Energy (kWh) and Reactive Energy (kVArh), as well as Voltage (V), Current (I) and Power (W).

With an optimised internal antenna and connection to most of the major UK mobile networks, communication should never be an issue, but this can be monitored using the GSM signal strength display. External antennas can easily be connected however, for areas where signal strength is particularly low.

This meter is supplied with a Meter Online SIM, allowing multiple meters to be read remotely using their simple online gateway. Click [here](#) for more information.

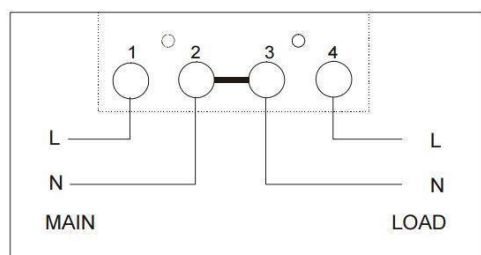
### Dimensions



### Specification

Part Code	EMGSM1
Meter Type	Single Phase
Fitting Type	Wall Mounted
Max. Current (Amps)	100A
MID Approved	Yes
Smart	Yes
Input Type	Direct Connect
Output Type	Pulse
Tariffs	Single
Import / Export	Import & Export
Availability	Next Day

### Wiring Guide



Click [here](#) to register

## MeterOnline

Energy Monitoring Portal  
Online Remote Meter Reading  
Automatic Reports & Alerts

- 1 - Purchase compatible smart meter
- 2 - Register here on MeterOnline
- 3 - Read your meter(s) remotely

As many meters as you like all on 1 account

