

# MID CLAMP

## Mid Clamp

Article No. F-BMC-30, F-BMC-35, F-BMC-40

### Product properties

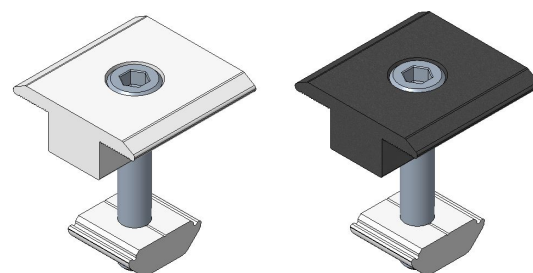
Material	Al6005-T5 & Stainless steel 304
Dimensions	30mm or 35mm or 40mm in height
Weight	0.055kg
Colour	Silver or Black
Pre-assembled	Yes

### Application properties

Function	Fixing the panel on rail
Installation Site	Roof solar panel mounts
Wind Load	60 m / s
Snow Load	1.4 KN/M <sup>2</sup>
Module Orientation	Portrait and Landscape
Surface Treatment	Anodized

### Package

Package Detail	400 pcs/ctn
----------------	-------------



Mid Clamp/Silver or Black