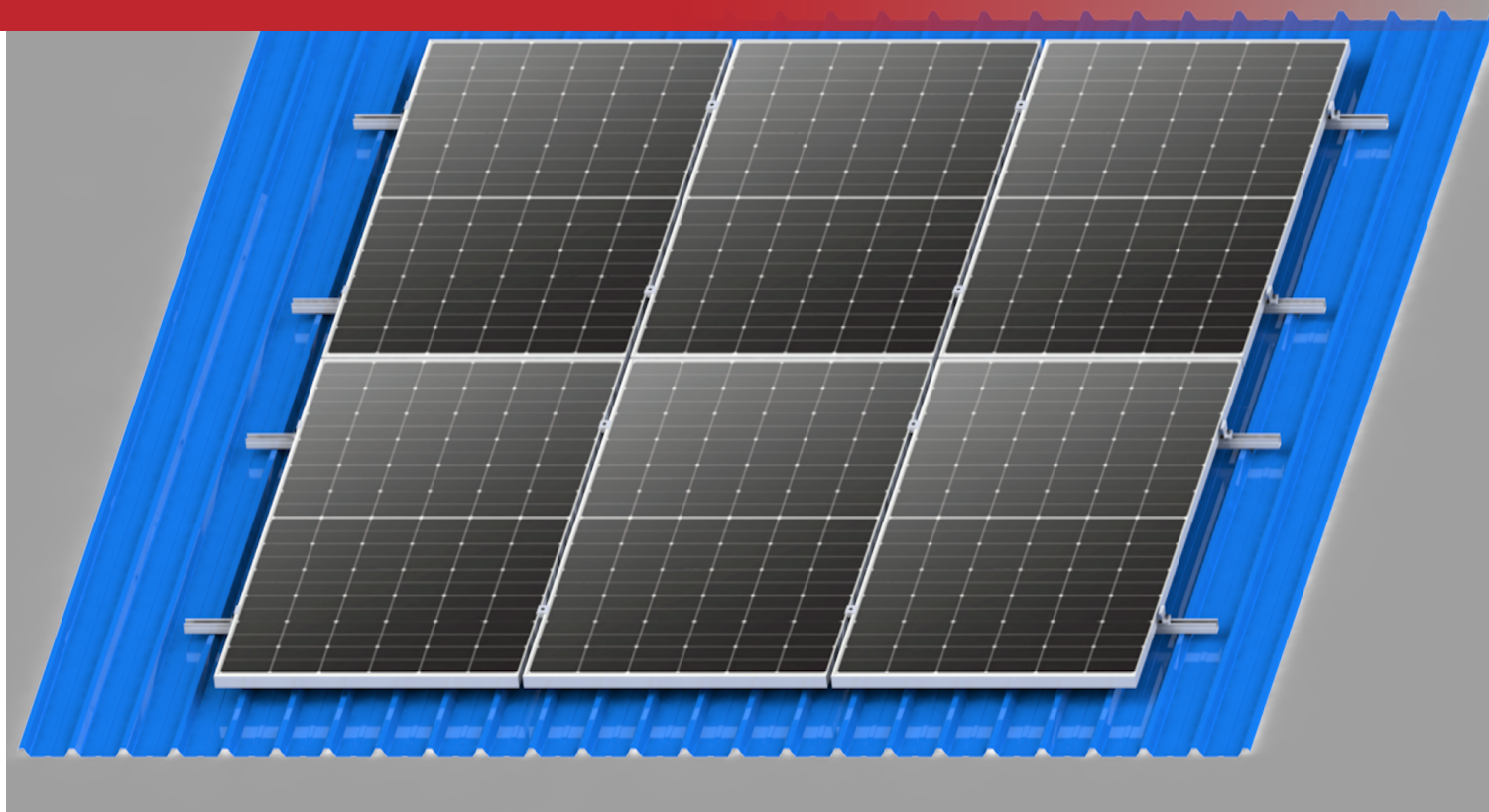


MINI RAIL

PORTRAIT

Rail-less mounting solution for metal sheet roof



Product Features

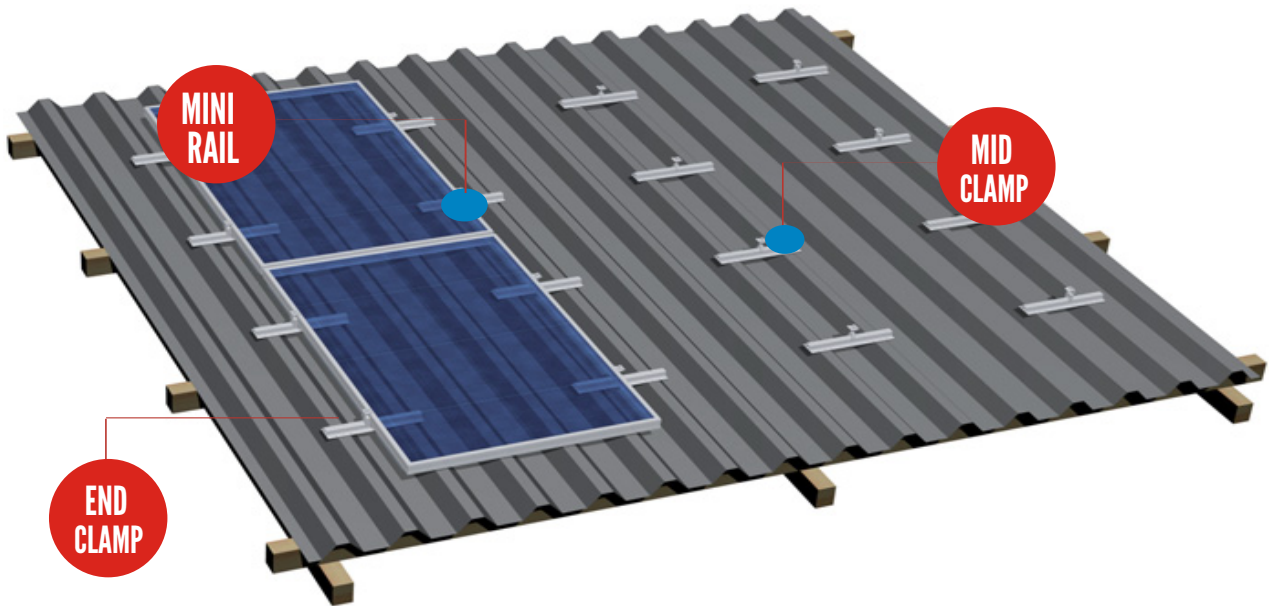
- Widely used for both crystalline modules.
- Easy & quick installation.
- Only 3 kinds of components in whole system fixation.
- All system components are made with high quality aluminum & stainless steel.
- Fit for the seam distance of metal sheet roof $\leq 250\text{mm}$.

Technical Data

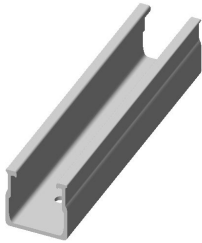
Project site	Popular trapezoidal and IBR sheets, corrugated sheet metal
Suitable Roof Pitch	1° - 45°
Weight (excluding module)	1.10kg/m ²
Min trapezoidal profile thickness Steel	0.48mm
Min trapezoidal profile thickness Aluminium	0.63mm
Wind Load	60m/s
Snow Load	2.0kn/ m ²
Applicable	Frame / frameless module, crystalline/ thin film module
Module Orientation	Portrait
Material	Stainless steel 304, Al6005-T5



System Overview



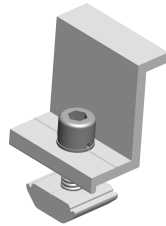
Key Components



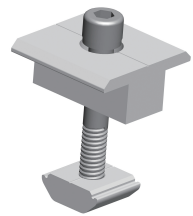
Mini Rail 400
(without holes)



Tapping screw

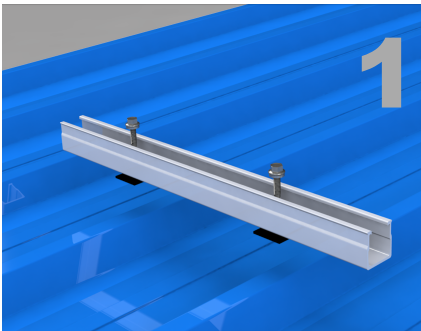


End Clamp

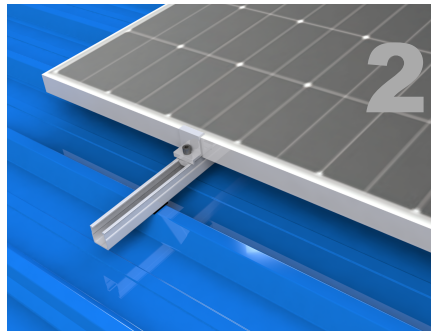


Mid Clamp

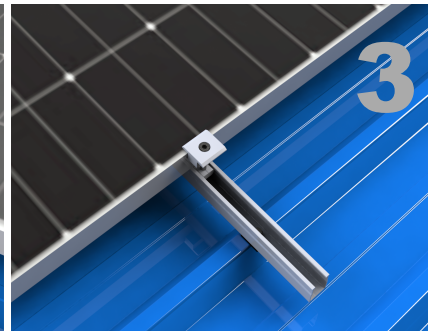
Key Components



Fasten the mini rails on the metal roof with 2pcs of rubber pads and 2pcs st6.3*25 tapping screw.



Fix the modules on the rail by end clamps.



Fix the modules on the rail by mid clamps.